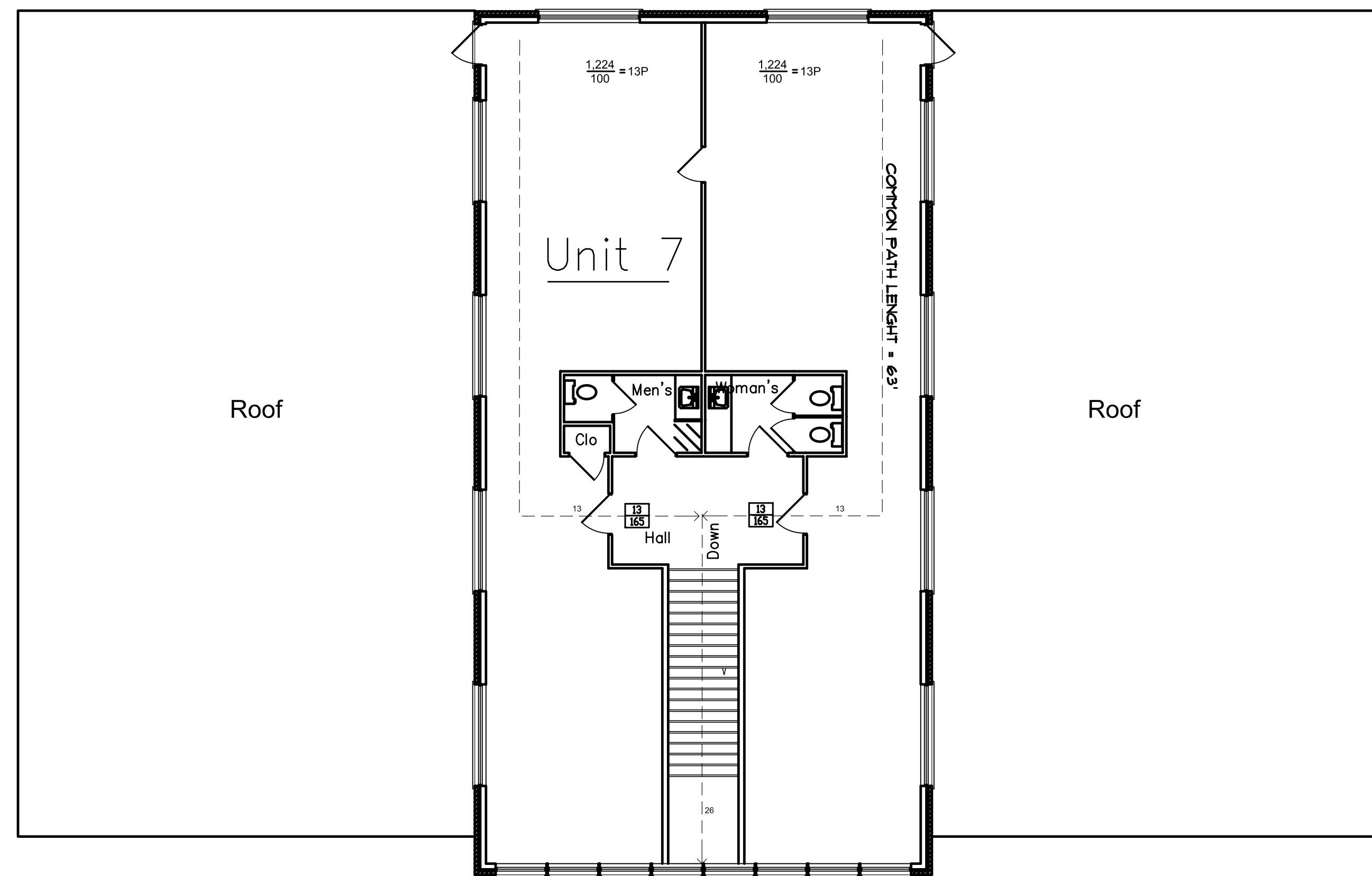
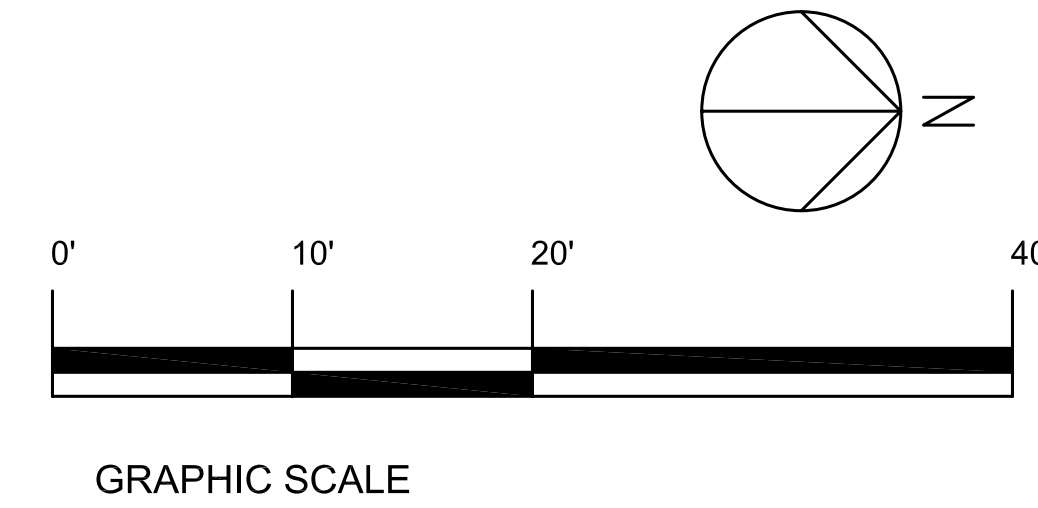
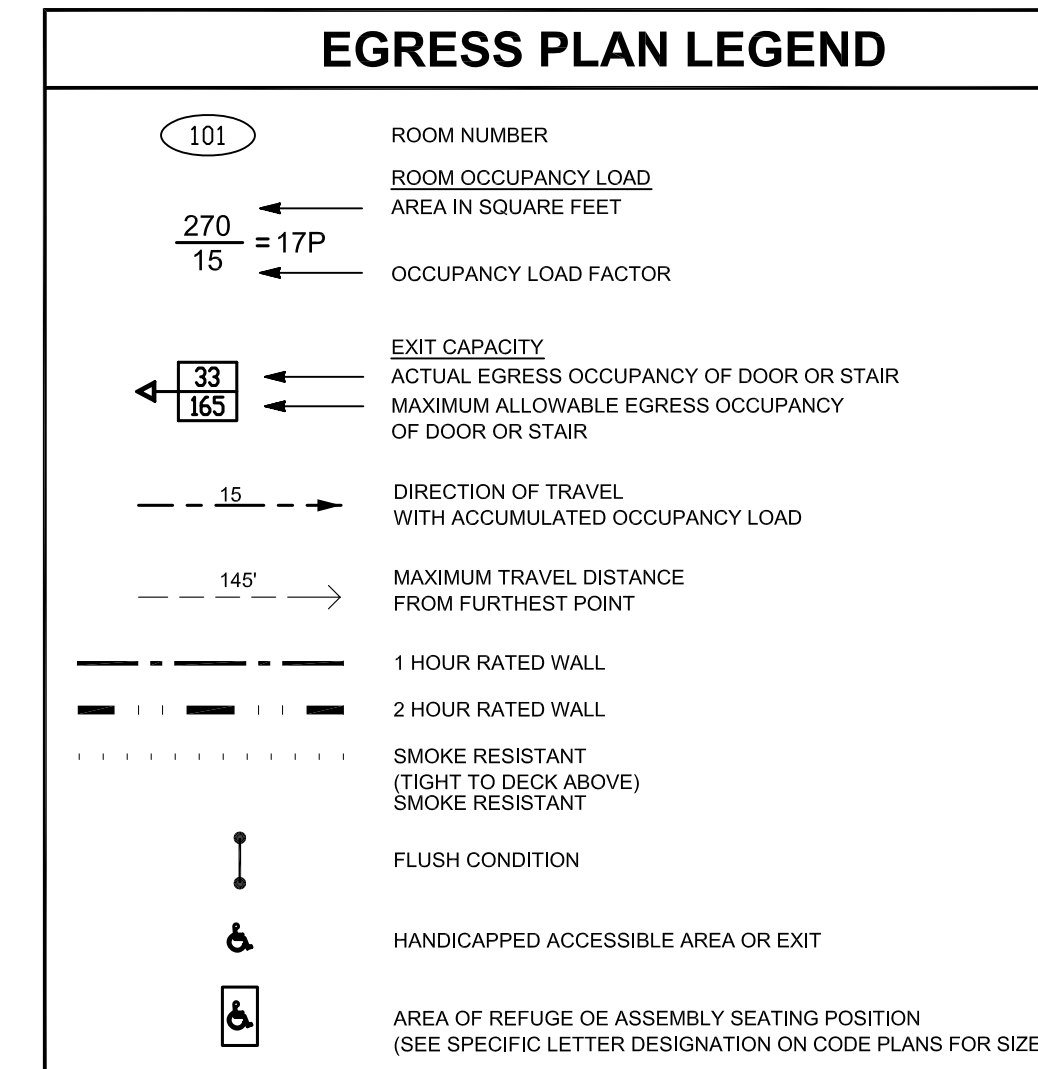


1 FIRST FLOOR EGRESS PLAN
SCALE: 1/8"=1'-0"



2 SECOND FLOOR EGRESS PLAN
SCALE: 1/8"=1'-0"



BUILDING AREA.
 FIRST FLOOR AREA = 7,143 SF
 SECOND FLOOR AREA = 2,448 SF
 TOTAL FLOOR AREA = 9,591 SF

CODE INFORMATION

REVIEW BASED UPON: IBC-2003, with CT Supplement, IPC-2003, NEC 70-2005, IECC-2003, CT FSC-2005, ICC ANSIA117.1-2003

ITEM	REFERENCE	PERMITTED/REQ'D	PROVIDED	COMMENTS/CALCULATIONS
1. OCCUPANCY	CHAPTER 3	MERCANTILE BUSINESS	MERCANTILE BUSINESS	MIXED USE NON-SEPARATED
2. CONSTRUCTION	CHAPTER 6	V B	V B	
3. SPRINKLERS	SECTION 903	YES	YES	
PORTABLE FIRE EXTINGUISHERS	SECTION 906	YES	YES	
FIRE ALARM AND DETECTION SYSTEM	SECTION 907	NO	-	
4. HEIGHT & AREA:	TABLE 503	60 2 9,000 SF	30 2 7,143 SF	HEIGHT AND STORY MODIFICATIONS DUE TO SPRINKLERED BUILDING
HEIGHT AREA MODIFICATION	SEC. 504, 506	32,040 SF	X	
5. FIRE RESISTANCE RATING FOR CONSTRUCTION TYPE:	TABLE 601			SEE EGRESS PLAN FOR LOCATION OF UL DESIGNATION OF RATED ASSEMBLY
STRUCTURE		0	0	
BEARING WALLS				
EXTERIOR		0	0	
INTERIOR		0	0	
NON BEARING				
EXTERIOR		0	0	
INTERIOR		0	0	
FLOOR		0	0	
ROOF		0	0	
FIRE SEPARATION DISTANCES	TABLE 602	0	0	
6. OCCUPANCY LOAD	TABLE 1004.1.2	7,143 / 30 = 238 2,448 / 100 = 25	260	SEE EGRESS PLAN
7. NUMBER OF EXITS	SECTION 1018 TABLE 1018.1 TABLE 1014.1	2	12	SEE EGRESS PLAN
BUILDINGS WITH 1 EXIT SPACES WITH 1 EXIT				
8. COMMON PATH	PARA. 1013.3	MAX. 100 FT	96 FT	SEE EGRESS PLAN
9. EXIT ACCESS TRAVEL	TABLE 1015.1	MAX 250 FT	96 FT	SEE EGRESS PLAN
10. EXIT CAPACITY:				SEE EGRESS PLAN
STAIRS	TABLE 1005.1	67' / .3 = 223		.3/OCCUPANT
OTHER EGRESS COMPONENTS I.e. DOORS	TABLE 1005.1	396' / .2 = 1980		.2/OCCUPANT
11. ELEMENT RATING:				SEE EGRESS PLAN
EXITS	CHAPTER 10	N/A	N/A	
EXIT ACCESS CORRIDORS	TABLE 1016.1	N/A	N/A	
REMOVEDNESS	TABLE 1014.2.1	MIN. 21'	62'	
12. INTERIOR FINISHES:	TABLE 803.5	B C C	B C C	
VERT. EXITS & PASSAGES EXIT ACCESS CORRIDORS & OTHER EXIT WAYS ROOMS & ENCLOSED SPACES				
13. PLUMBING FIXTURE	TABLE 2902.1			
TOTAL:				SEE EGRESS PLAN
MALE		1	1	
FEMALE		1	2	
ACCESSIBLE		6	6	
14. AREA OF REFUGE	PARA. 1007.6	NO	NO	SEE EGRESS PLAN
15. ACCESSIBILITY	CHAPTER 11			
HP PARKING SPACES	SECTION 1106			
VAN		YES	YES	
CAR		YES	YES	
PASSENGER LOADING ZONE	PARA 1106.7	N/A	N/A	
ACCESSIBLE MEANS OF EGRESS	SECTION 1007	YES	YES	
OTHER FEATURES	SECTION 1109			
TOILET & BATHING FACILITIES	PARA 1109.2			
UNISEX TOILET	PARA 1109.2.1	YES	YES	
SIGNAGE	SECTION 1110	YES	YES	
16. INTERIOR ENVIRONMENT	CHAPTER 12			
INTERIOR SPACE DIMENSIONS	SECTION 1208			
ACCESS TO UNOCCUPIED SPACES	SECTION 1209			
17. ENERGY	IECC	CONDITION	VALUE	
(COMMERCIAL)				
DRY BULB	WINTER	X		OBTAIN FROM HVAC DESIGNER
	SUMMER	X		
WET BULB	SUMMER	X		
DEGREE DAYS	HEATING	X		
	COOLING	X		
FIGURE 902.1(7)	CLIMATE ZONE	X		
18. BUILDING ENVELOPE (COMMERCIAL)	REFERENCE	REQ'D	PROVIDED	COMMENTS
	IECC 102.5 802.2(XX)	U FACTOR R VALUE	U FACTOR R VALUE	SELECT TABLE MATCHING CLIMATE ZONE
SLAB OR BELOW GRADE		X	X	
WINDOWS/ GLASS DOORS		X	X	SELECT PF
ROOF ASSEMBLY		X	X	SELECT ASSEMBLY FROM LIST
FLOORS OVER OUTDOOR OR UNCONDITIONED SPACE		X	X	SELECT ASSEMBLY FROM LIST
ABOVE GRADE WALLS		X	X	SELECT ASSEMBLY FROM LIST
19. MODIFICATIONS	DATE:	DISCRPTION		

Schoenhardt
 Architecture + Interior Design
 Two Tunxis Road, Suite 116
 Torrville, CT 06081
 fax 860.658.5280
 tel 860.658.4496
 schoenhardt.com

NORTH CENTRAL SQUARE
 697 POQUONNOK AVE
 WINDSOR, CT

Project: 09022.01
 Initials:
 Date: 4-2-09
 Revisions:
 01 4-5-09
 02 REV. 4-14-09

CODE INFORMATION
 EGRESS PLAN