

SEPARATE SUBMITTALS

SEPARATE SUBMITTALS WILL BE REQUIRED FOR:

- FIRE SPRINKLER SYSTEM
- FIRE ALARM SYSTEM
- BUILDING SIGNAGE (INCLUDING MONUMENT SIGN)
- BUILDING CANOPIES

10 SEPARATE SUBMITTALS

G1.0 NONE

NOT USED

11 NOT USED

G1.0 NONE

NOT USED

12 NOT USED

G1.0 NONE

GENERAL NOTES

- THE INTENT OF THESE DRAWINGS IS TO INCLUDE ALL ITEMS NECESSARY FOR THE PROPER EXECUTION AND COMPLETION OF THE WORK. WORDS AND ABBREVIATIONS WHICH HAVE WELL-KNOWN TECHNICAL OR TRADE MEANINGS ARE USED IN THESE DRAWINGS IN ACCORDANCE WITH SUCH RECOGNIZED MEANINGS.
- SHOULD EITHER THE DRAWINGS OR ANY PARTICULAR SPECIFICATION, AND THE GENERAL CONDITIONS CONTRADICT EACH OTHER IN ANY PART, OR REQUIRE CLARIFICATIONS, THE CONTRACTOR MUST CALL THE SAME TO THE ATTENTION OF THE PROJECT ENGINEER AND HIS DECISION SHALL BE OBTAINED PRIOR TO THE SUBMISSION OF BIDS. OTHERWISE THE ENGINEER'S INTERPRETATION WILL GOVERN THE PERFORMANCE OF THE WORK AND NO ALLOWANCE SHALL BE MADE IN BEHALF OF THE SUBCONTRACTOR FOR ERROR OR NEGLIGENCE ON HIS PART IN THE CONNECTION.
- PROSPECTIVE SUBCONTRACTOR SHALL SECURE ALL DATA AT THE SITE OF THE PROPOSED CONSTRUCTION, SUCH AS GRADES OF LOT, CONVENIENCE OF RECEIVING AND SORTING MATERIALS, LOCATION OF PUBLIC SERVICES AND OTHER INFORMATION WHICH WILL HAVE A BEARING ON MAKING THEIR PROPOSALS OR ON THE EXECUTION OF THE WORK IF AWARDED THE CONTRACT, AND NO ALLOWANCE WILL BE MADE FOR THE FAILURE OF THE CONTRACTOR TO OBTAIN SUCH ON-SITE INFORMATION PRIOR TO BIDDING.
- SHOULD ANY ERROR OR INCONSISTENCY APPEAR IN THE DRAWINGS, THE CONTRACTOR, BEFORE PROCEEDING WITH WORK, MUST CLEARLY BRING THE SAME TO THE ATTENTION OF THE PROJECT ENGINEER FOR PROPER ADJUSTMENT, AND IN NO CASE PROCEED WITH THE WORK IN UNCERTAINTY NOR WITH INSUFFICIENT DRAWINGS.
- THE CONTRACTOR SHALL BE RESPONSIBLE FOR VERIFICATION OF ALL MEASUREMENTS AT AND IN THE PROPOSED CONSTRUCTION BUILDING OR SITE OR SURROUNDINGS PRIOR TO START OF CONSTRUCTION. NO CHARGE OR COMPENSATION SHALL BE ALLOWED DUE TO DIFFERENCES BETWEEN ACTUAL DIMENSIONS AND DIMENSIONS INDICATED ON THE DRAWINGS. ANY SUCH DISCREPANCY IN DIMENSIONS WHICH MAY BE FOUND, SHALL BE SUBMITTED TO ENGINEER FOR HIS CONSIDERATION BEFORE THE CONTRACTOR PROCEEDS WITH THE WORK IN THE AFFECTED AREA.
- CONTRACTORS SHALL FOLLOW SIZES IN SPECIFICATIONS OR FIGURES ON DRAWINGS IN PREFERENCE TO SCALE MEASUREMENTS, AND FOLLOW DETAILS DRAWINGS IN PREFERENCE TO GENERAL DRAWINGS, AND FOLLOW ACTUAL FIELD CONDITIONS.
- WHERE IT IS OBVIOUS THAT A DRAWING ILLUSTRATES ONLY PART OF A GIVEN WORK OF A NUMBER OF ITEMS, THE REMAINDER SHALL BE DEEMED REPETITIOUS AND SO CONSTRUCTED.
- THE DOCUMENTS INDICATE GENERAL AND TYPICAL DETAILS OF CONSTRUCTION, WHERE CONDITIONS ARE NOT SPECIFICALLY INDICATED, DETAILS OF A CHARACTER SIMILAR TO THOSE SHOWN SHALL BE USED SUBJECT TO REVIEW BY PROJECT ENGINEER.
- NOTHING CONTAINED HEREON SHALL BE CONSTRUED TO VIOLATE ANY APPLICABLE REGULATIONS.
- ANY SUBSTITUTION OF MATERIALS OR PRODUCTS SPECIFIED IN DRAWINGS SHALL BE APPROVED BY THE PROJECT ENGINEER/ARCHITECT.
- BY EXECUTING THE CONTRACT, THE SUBCONTRACTOR REPRESENTS THAT HE HAS VISITED THE SITE, FAMILIARIZED HIMSELF WITH THE LOCAL CONDITIONS UNDER WHICH THE WORK IS TO BE PERFORMED, AND CORRELATED HIS OBSERVATIONS WITH THE REQUIREMENTS OF THE CONTRACT DOCUMENTS, AND HAS READ ALL CONTRACT DRAWINGS INCLUDING ARCHITECTURAL, STRUCTURAL, MECHANICAL, ELECTRICAL, PLUMBING, AND SITE WORK.
- THESE DRAWINGS HAVE BEEN PREPARED USING INFORMATION PROVIDED BY OTHERS, ENGINEER ASSUMES NO RESPONSIBILITY FOR ACCURACY OF INFORMATION PROVIDED, OR THE RESULTING ERRORS OR OMISSIONS ON THE DRAWINGS WHICH ARE INCIDENTAL TO THE INCORRECT INFORMATION PROVIDED.
- CONTRACTOR SHALL BE RESPONSIBLE FOR MAINTAINING SAFE CONSTRUCTION PROCEDURES AT THE SITE AT ALL TIMES.
- CONTRACTOR SHALL BE RESPONSIBLE FOR ALL SHORING SHOWN ON THE DRAWINGS OR IMPLICITLY REQUIRED DURING CONSTRUCTION (TEMPORARY OR OTHERWISE) SAFETY SHALL BE MAINTAINED AT ALL TIMES (ON AND OFF CONSTRUCTION HOURS)
- THE CONTRACT STRUCTURAL DRAWINGS AND SPECIFICATIONS REPRESENT THE FINISHED STRUCTURE. THEY DO NOT INDICATE THE METHOD OF CONSTRUCTION. THE CONTRACTOR SHALL PROVIDE ALL MEASURES NECESSARY TO PROTECT THE STRUCTURE DURING CONSTRUCTION. SUCH MEASURES SHALL INCLUDE, BUT NOT BE LIMITED TO, BRACING, SHORING, FOR LOADS DUE TO CONSTRUCTION EQUIPMENT, ETC.

8 GENERAL NOTES

G1.0 NONE

9 FIRE SPRINKLERS

G1.0 NONE

- A SEPARATE PERMIT & APPROVAL IS REQUIRED FOR THE FIRE SPRINKLER SYSTEM & UNDERGROUND FIRE SUPPLY PIPING.
- FIRE SPRINKLER SPECIFICATIONS: AN APPROVED AUTOMATIC FIRE SPRINKLER SYSTEM IS TO BE INSTALLED ON THIS PROJECT. THE SYSTEM SHALL COMPLY WITH NFPA PAMPHLET #13 AND CBC SECTION 903.2.3 #1. SHOP DRAWINGS SHALL BE PROVIDED TO THE GOVERNING FIRE AGENCY FOR APPROVAL. THE CONTRACTOR SHALL COORDINATE POINT OF CONNECTION. ALL EXPOSED METAL SURFACES SHALL BE PAINTED TO MATCH ADJACENT WALLS. CHROME ESCUTCHEONS SHALL BE PROVIDED AT INTERIOR.
- FIRE EXTINGUISHERS TO BE LOCATED WITHIN 75' OF EXITS & 300 SQUARE FEET IN GENERAL USE AREAS.
- FIRE CODE COMPLIANCE REQUIRES SEPARATE REVIEW BY THE FIRE MARSHAL.
- IF THE FIRE SPRINKLER RISER PASSES THROUGH THE CONCRETE FOUNDATION, MAINTAIN PROPER CLEARANCE AROUND RISER.
- SUBMIT FOUR (4) COMPLETE SETS OF FIRE SPRINKLER SYSTEM PLANS AND CALCULATIONS TO THE FIRE DEPARTMENT FOR REVIEW AND APPROVAL PRIOR TO INSTALLATION. THE PLANS SHALL BE SUBMITTED BY A LICENSED C-16 CONTRACTOR AND CONFORM TO NFPA #13, 2016 EDITION, AND THE CITY OF TURLOCK MUNICIPAL CODE, TMC 4-3-203
- SUBMIT (4) FOUR COMPLETE SETS OF FIRE ALARM AND FIRE SPRINKLER MONITORING PLANS SPECIFICATIONS TO THE FIRE DEPARTMENT FOR REVIEW AND APPROVAL PRIOR TO INSTALLATION. THE PLANS SHALL BE SUBMITTED BY A LICENSED C-10 FIRE ALARM PROFESSIONAL AND THEY SHALL CONFORM TO NFPA #72, 2016 EDITION. SYSTEM SHALL BE U.L. CERTIFIED AND MONITORED BY A U.L. CENTRAL STATION FOR THE LIFE OF THE BUILDING. U.L. CERTIFICATE REQUIRED AT FINAL.
- TWO LOCKING FDC PLUGS (2 - 2 1/2") SHALL BE INSTALLED. PLUGS MAY BE ORDERED AT WWW.KNOXBOX.COM OR BY VISITING CITY OF TURLOCK FIRE DEPT. OFFICE. PLEASE ORDER PRIOR TO FINAL INSPECTION. DELIVERY TAKES APPROXIMATELY 7 WORKING DAYS. FIRE DEPARTMENT TO INSTALL AT FINAL INSPECTION. TMC 4-3-204 (I)
- INCLUDE HEIGHTS OF ALL RACKING AND PRODUCT TO BE STORED WITH FIRE SPRINKLER SUBMITTAL.

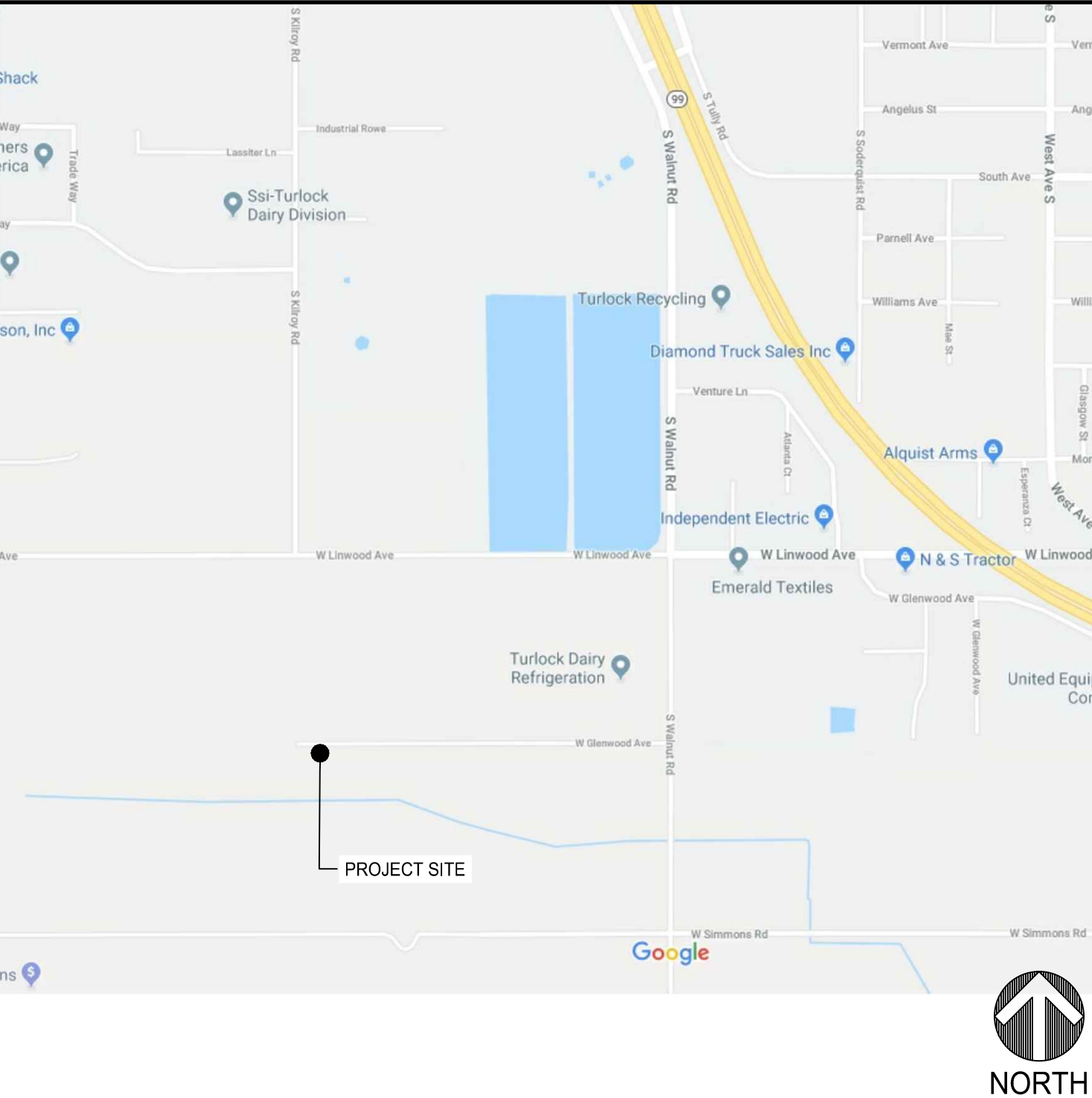
- THE ENGINEER OF RECORD IS NOT RESPONSIBLE FOR, AND DOES NOT HAVE CONTROL OF, CONSTRUCTION MEANS, METHODS, TECHNIQUES, SEQUENCES, AND PROCEDURES, FOR SAFETY PRECAUTIONS AND PROGRAMS IN CONNECTION WITH THE CONSTRUCTION WORK. THE ENGINEER OF RECORD IS NOT RESPONSIBLE FOR THE CONTRACTOR'S FAILURE TO CARRY OUT THE CONSTRUCTION WORK IN ACCORDANCE WITH THE CONTRACT DOCUMENTS. THE ENGINEER OF RECORD IS NOT RESPONSIBLE FOR, AND DOES NOT HAVE CONTROL OR CHARGE OVER ACTS OR OMISSIONS OF, THE CONTRACTOR, SUBCONTRACTORS, OR ANY OF THEIR AGENTS OR EMPLOYEES, OR ANY OTHER PERSONS PERFORMING ANY OF THE CONSTRUCTION WORK.
- STRUCTURAL OBSERVATION BY THE ENGINEER OF RECORD DOES NOT RELIEVE THE CONTRACTOR OF HIS OR HER RESPONSIBILITY FOR BUILDING THE PROJECT, CONTROLLING THE PROGRESS PROVIDING SAFE WORKING CONDITIONS, AND CORRECTING ANY DEVIATIONS FROM PROJECT REQUIREMENTS. SUCH OBSERVATIONS ARE NOT TO BE CONSTRUED AS INSPECTION OF THE WORK. RESPONSIBILITY FOR RESOLUTION OF ANY ITEMS NOTED DURING OBSERVATION AS NOT BEING IN CONFORMANCE WITH THE CONTRACT DOCUMENTS RESTS WITH THE CONTRACTOR, SUBJECT TO REVIEW AND APPROVAL BY THE ENGINEER OF RECORD.
- ALL WORK SHALL CONFORM TO THE LATEST APPLICABLE CONSTRUCTION SAFETY REQUIREMENTS OF O.S.H.A. AND ANY OTHER GOVERNMENTAL AGENCY HAVING JURISDICTION IN THE AREA OF WORK.
- TEMPORARY BRACING OR SHORING SHALL NOT BE REMOVED UNTIL MATERIALS REACH THEIR ULTIMATE STRENGTH.
- OPENINGS, POCKETS, ETC., SHALL NOT BE PLACED IN SLABS, DECKS, BEAMS, JOISTS, COLUMNS, WALLS, ETC., UNLESS SPECIFICALLY DETAILED ON THE STRUCTURAL DRAWINGS. NOTIFY THE ENGINEER WHEN DRAWINGS BY OTHERS SHOW OPENINGS, POCKETS, ETC., NOT SHOWN ON THE STRUCTURAL DRAWINGS, BUT WHICH ARE LOCATED IN STRUCTURAL MEMBERS.
- FRAME OPENINGS AND SUPPORT MISCELLANEOUS EQUIPMENT AS DETAILED ON THE DRAWINGS, WHERE NO DETAILS ARE PROVIDED, OBTAIN APPROVAL FROM THE ENGINEER BEFORE PROCEEDING WITH WORK.
- CONSTRUCTION MATERIALS SHALL BE SPREAD OUT IF PLACED ON FRAMED FLOOR OR ROOF. LOAD SHALL NOT EXCEED THE DESIGN LIVE LOAD PER SQUARE FOOT. PROVIDE ADEQUATE SHORING AND/OR BRACING WHERE SUCH LOADS WOULD EXCEED DESIGN LIVE LOAD.
- NOTES AND DETAILS ON DRAWINGS SHALL TAKE PRECEDENCE OVER THESE GENERAL NOTES.
- APPLICANTS SHALL SECURE CLEARANCES FROM PLANNING, ENGINEERING & FIRE DEPARTMENTS.
- THE APPLICANT SHALL SUBMIT A GRADING & DRAINAGE PLAN TO THE DEPARTMENT OF PUBLIC WORKS AND SHALL OBTAIN THE NECESSARY PERMIT.
- ALL SIGNS REQUIRE SEPARATE PERMIT AND SUBMITTAL TO PLANNING DEPARTMENT.
- BUILDING PERMITS ARE REQUIRED FOR ANY TYPE OF STORAGE RACK OR GONDOLA OVER 5'-9" IN HEIGHT (STRUCTURAL CALCULATIONS AND DETAILS MAY BE REQUIRED). IF 9'-0" OR HIGHER, PLANS AND STRUCTURAL CALCULATIONS ARE REQUIRED TO BE DONE BY A LICENSED CA ARCHITECT/ENGINEER. ATTACHMENT DETAILS ARE REQUIRED FOR ALL TYPES OF STORAGE REQUIRING A PERMIT. SPECIAL INSPECTIONS MAY BE REQUIRED.
- WALL SHELVES/PRODUCT SHELVES OF ANY HEIGHT THAT PROJECT 12" FROM WALL OR ROOF, OR WEIGH MORE THAN 20 LBS PER ATTACHMENT POINT, REQUIRE A BUILDING PERMIT.
- SEE CITY OF TURLOCK SHELVING & STORAGE RACKS HANDOUT, AS THIS LIST IS NOT EXHAUSTIVE.
- PAYMENT OF APPLICABLE CITY AND COUNTY FACILITY FEES WILL BE REQUIRED AT TIME OF BUILDING PERMIT ISSUANCE.
- TENANT IMPROVEMENT PLANS MAY BE REQUIRED DEPENDING ON THE PROPOSED USE OF THE SPACE AND SIGNIFICANT ADDITIONAL WORK MAY BE REQUIRED. TENANT IMPROVEMENT PLANS ARE REQUIRED FOR ANY PERMISSIBLE WORK OR FOR ANY CHANGE OF OCCUPANCY CLASSIFICATION. REQUIRED NUMBER OF EXITS, RESTROOMS, ETC. IS BASED ON AN F-1/S-1 OCCUPANCY. ANY CHANGE TO A DIFFERENT OCCUPANCY CLASSIFICATION MAY REQUIRE ADDITIONAL FACILITIES, EXITS (INCLUDING NEW ACCESSIBLE PATHWAYS), ETC.
- NO STORAGE, DISPENSING OR MANUFACTURE OF HAZARDOUS MATERIALS IN EXCESS OF 2016 C.B.C. ALLOWED WITHIN THIS STRUCTURE.

JULAN DEVELOPMENT GROUP

ENTERPRISE PARK LOTS 4&22
 1601 OLYMPIC DRIVE
 TURLOCK, CA 95380
 APN : 044-017-080

4 PROJECT TITLE

G1.0 NONE



5 VICINITY MAP

G1.0 1" = 1000'

PROJECT DATA:

C.B.C. CONDITION: 2016 CBC, CMC, CPC, CFC, TITLE 24 CEC, CEC, CALIFORNIA ENERGY CODE, CALGREEN

GOVERNING AGENCY: CITY OF TURLOCK

OCCUPANCY GROUP: F1/S1 WAREHOUSE NOT TO BE USED AS MOTOR VEHICLE REPAIR GARAGE

CONSTRUCTION TYPE: IIB

FIRE SPRINKLERS: YES

BUILDING AREA: (N) - 14,424 SQ. FT.

ALLOWABLE AREA: 62,000 SQ. FT. - F-1 - MOST RESTRICTIVE
70,000 SQ. FT. - S-1
(CBC TABLE 506.2 & CBC SECTION 508.3.2)

OCCUPANCY: WAREHOUSE / INDUSTRIAL

PARKING ANALYSIS

PARKING REQUIRED: INDUSTRIAL, MANUFACTURING & WAREHOUSING / SPACE PER 1000 SF OF GROSS FLOOR AREA
14,424 SF / 1000 - ROUNDUP = 15
TOTAL REQUIRED = 15 SPACES

PARKING PROVIDED: ACCESSIBLE: 1 VAN ACCESSIBLE
CLEAN AIR VEHICLE: 1
ELECTRIC VEHICLE: 1 (CHARGING INFRASTRUCTURE ONLY)
COMPACT: 0
STANDARD: 21
TOTAL: 24 MORE THAN 15 - OK

BICYCLE PARKING PROVIDED: SHORT-TERM: (1) 2 BICYCLE CAPACITY RACK
LONG-TERM: 2 BICYCLE STORAGE

SPECIAL INSPECTIONS REQUIRED: SEE SHEET S1.1 FOR SPECIFICATIONS

6 C.B.C. ANALYSIS

G1.0 NONE

SHEET DESCRIPTION

SHEET	DESCRIPTION
G1.0	TITLE, SHEET INDEX, VICINITY MAP & NOTES
G1.1	CALGREEN CHECKLIST
G1.2	CALGREEN CHECKLIST
G1.3	CALGREEN CHECKLIST
C1	SITE PLAN
C2	ENLARGED SITE PLAN
C3	GRADING PLAN
C4	CONTAINMENT PLAN
C5	UTILITIES PLAN
C6	SITE DETAILS
C7	RAMP SECTIONS & DETAILS
A1.0	EGRESS AND FLOOR PLAN
A2.0	ELEVATIONS
A3.0	ROOF PLAN
AC1.0	ACCESSIBILITY DETAILS
AC1.1	ACCESSIBILITY DETAILS
S1.0	STRUCTURAL NOTES, SYMBOLS & ABBREVIATIONS
S1.1	STRUCTURAL NOTES
S2.0	FOUNDATION PLAN
S3.0	CONCRETE DETAILS
S3.1	CONCRETE DETAILS
S4.0	FRAMING DETAILS
S4.1	FRAMING DETAILS
M1.0	MECHANICAL PLAN
P1.0	PLUMBING FLOOR PLAN
P1.1	ENLARGED PLUMBING FLOOR PLAN
P1.2	PLUMBING NOTES
E1.1	ELECTRICAL SERIES BY HCS ENGINEERING
E1.1	GENERAL NOTES & ELECTRICAL SITE PLAN
E2.1	LIGHTING FLOOR PLAN
E3.1	POWER FLOOR PLAN & ELECTRICAL ROOF PLAN
E4.1	ELECTRICAL DETAILS & LEGEND
ET24A	COMPLIANCE
ET24B	COMPLIANCE
ET24C	COMPLIANCE
ET24D	COMPLIANCE
EN-1	TITLE 24 SERIES BY CALIFORNIA LIVING & ENERGY
EN-1	LOTS 4 & 22 ENERGY CALCULATIONS
EN-1	LOTS 4 & 22 ENERGY CALCULATIONS
L1	LANDSCAPING SERIES BY LINDA FISH (FOR REFERENCE ONLY)
L2	IRRIGATION PLAN
L3	PLANTING PLAN
L3	LANDSCAPE DETAILS
M1	METAL BUILDING SERIES BY VP BUILDINGS
1	COVER SHEET
2	CODES AND LOADS
3	ERECTION NOTES
4	ANCHOR ROD PLAN
5	ANCHOR ROD PLAN - DETAILS
6	PRIMARY AND ROOF BRACING PLAN
7	FRAME CROSS SECTION AT FRAME LINE(S) 12
8	FRAME CROSS SECTION AT FRAME LINE(S) 11
9	FRAME CROSS SECTION AT FRAME LINE(S) 10
10	FRAME CROSS SECTION AT FRAME LINE(S) 9
11	FRAME CROSS SECTION AT FRAME LINE(S) 8
12	FRAME CROSS SECTION AT FRAME LINE(S) 7
13	FRAME CROSS SECTION AT FRAME LINE(S) 6
14	FRAME CROSS SECTION AT FRAME LINE(S) 5
15	FRAME CROSS SECTION AT FRAME LINE(S) 4
16	FRAME CROSS SECTION AT FRAME LINE(S) 3
17	FRAME CROSS SECTION AT FRAME LINE(S) 2
18	PRIMARY BRACING SED'S
18a	SPECIAL DETAILS
18b	SPECIAL DETAILS
19	ROOF SECONDARY PLAN
20	ROOF SECONDARY SED'S
21	ROOF SECONDARY SED'S
22	SECONDARY ELEVATION AT 1
23	SECONDARY ELEVATION AT A
24	SECONDARY ELEVATION AT 13
25	SECONDARY ELEVATION AT D
26	WALL SECONDARY SED'S
27	ROOF COVERING PLAN
28	COVERING ELEVATION AT 1
29	COVERING ELEVATION AT A
30	COVERING ELEVATION AT 13
31	COVERING ELEVATION AT D
32	COVERING & TRIM SED'S
33	COVERING & TRIM SED'S
34	COVERING & TRIM SED'S
35	MRS50 DRAWING
36	B-081465 PLANOGRAPH
37	B-081765 PLANOGRAPH
38	B-081766 PLANOGRAPH
39	B-081767 PLANOGRAPH

3 SHEET INDEX

G1.0 NONE

JULAN DEVELOPMENT GROUP
 PROPERTY MANAGEMENT
 COMPANY
 P.O. BOX 3148
 TURLOCK, CA 95381

ENGINEER:

JUSTIN W. CAPP, Inc.
 ENGINEERING + DESIGN
 JUSTIN W. CAPP
 CE #61393, SE #4813
 1005 12th STREET, MODESTO, CA 95354
 PO BOX 861, MODESTO, CA 95353
 (209) 524-4774
 www.justinwecapp.com

ANDERSON-LITFIN, INC.
 1385 VENTURE LN.
 TURLOCK, CA 95380
 TEL: (209) 667-4141
 FAX: (209) 667-5267

REVISION HISTORY:

No.	DATE	ISSUANCE
3/11/20		BUILDING PLAN CHECK #1
6/18/20		BUILDING PLAN CHECK #2

USE DISCLAIMER:
 THE DESIGN DATA CONTAINED IN THIS DRAWING IS THE SOLE PROPERTY OF JUSTIN W. CAPP AND MAY NOT BE REPRODUCED OR USED WITHOUT WRITTEN PERMISSION. THIS DRAWING IS NOT TO BE USED FOR CONSTRUCTION UNTIL SEALED AND DATED. THE END USER IS RESPONSIBLE FOR COORDINATION OF FIELD CONDITIONS, DIMENSIONS, AND WORK NOT OTHERWISE SHOWN BY THIS DRAWING.

ENGINEER'S SEAL:

10/8/2020

KEY PLAN:

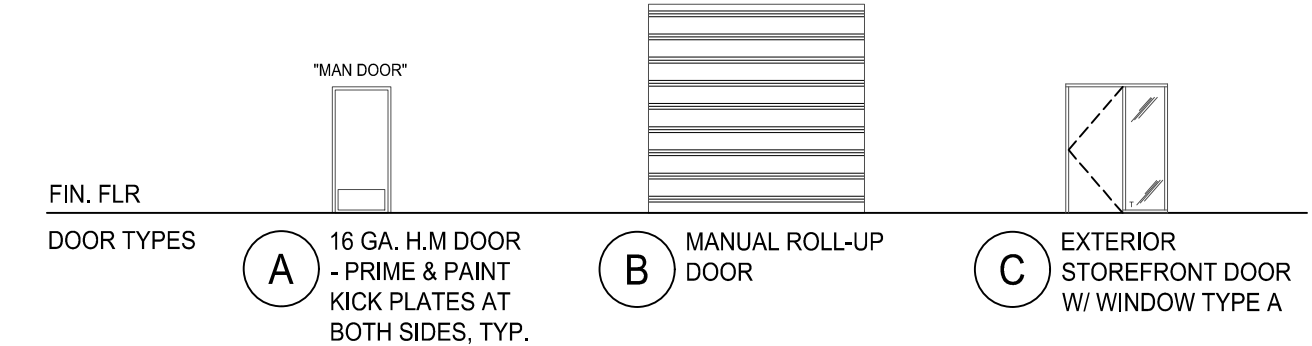
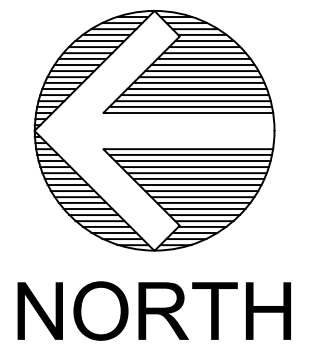
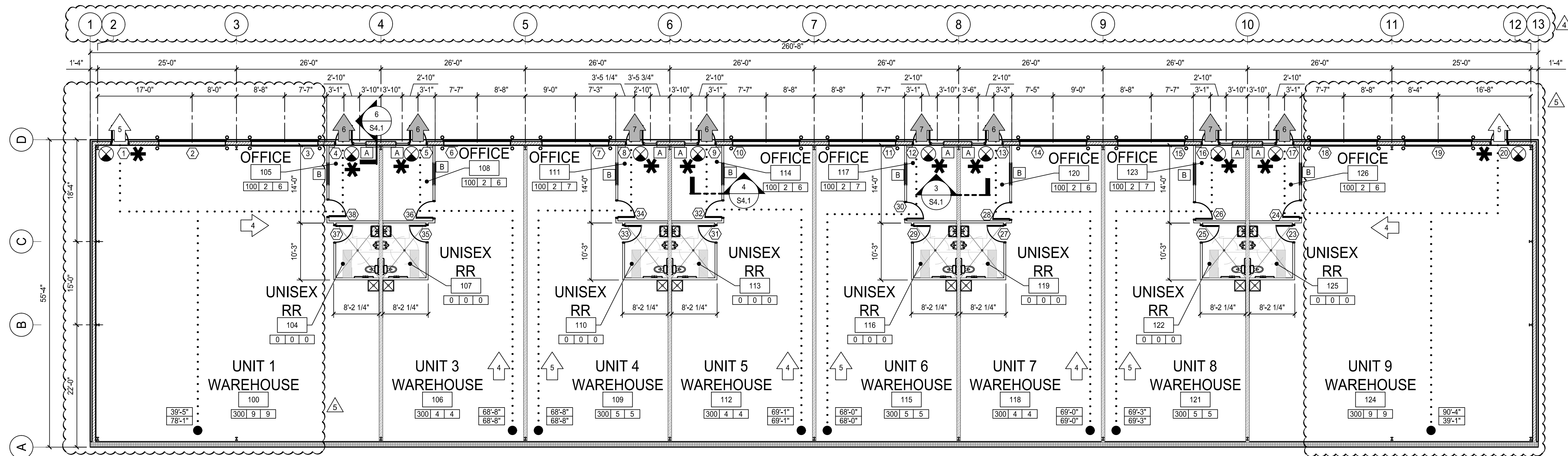
PROJECT NAME:
**ENTERPRISE PARK
 LOTS 4 & 22**

DRAWING TITLE:
**SHEET INDEX,
 TITLE & NOTES**

CAD FILE NAME:
 19182_G1.0.DWG

DRAWING SCALE: AS NOTED

JOB NUMBER:	DRAWN:	MN	SHEET NUMBER:
19182	CHK'D:	JWC	G1.0
	DATE:	07/02/19	



SYMBOL	SIZE		FRAME		GLASS			REMARKS
	WIDTH	HEIGHT	MATERIAL	FINISH	OPENABLE	FIXED	DUAL PANE	
A	2'-4"	7'-0"	ALUMINUM	CLR. ANOD.	-	YES	YES	VERIFY FRAME COLOR WITH OWNER; TEMPERED, STOREFRONT
B	3'-0"	3'-0"	ALUMINUM	CLR. ANOD.	-	YES	YES	VERIFY FRAME COLOR WITH OWNER

NOTES

- OCCUPANT LOADS ARE CALCULATED PER CBC TABLE 1004.1.2.
- ALL EXITS SHALL REMAIN UNOBSTRUCTED AT ALL TIMES.
- ALL PATHS OF EGRESS: CROSS SLOPE NOT TO EXCEED 2% AND RUNNING SLOPE NOT TO EXCEED 5%.
- ALL EGRESS DOORS TO HAVE 5'-0"x5'-0" LEVEL LANDING @ EXTERIOR, SEE DETAIL AC1.1.

EXIT WIDTH CALCULATIONS

SINGLE 36" DOOR = 36" / (0.21/OCC.) = 180 OCCUPANT EXITING CAPACITY
 DOUBLE 36" DOOR = 72" / (0.21/OCC.) = 360 OCCUPANT EXITING CAPACITY
 SINGLE 48" GATE = 48" / (0.21/OCC.) = 240 OCCUPANT EXITING CAPACITY

MAXIMUM ALLOWABLE EGRESS TRAVEL DISTANCE

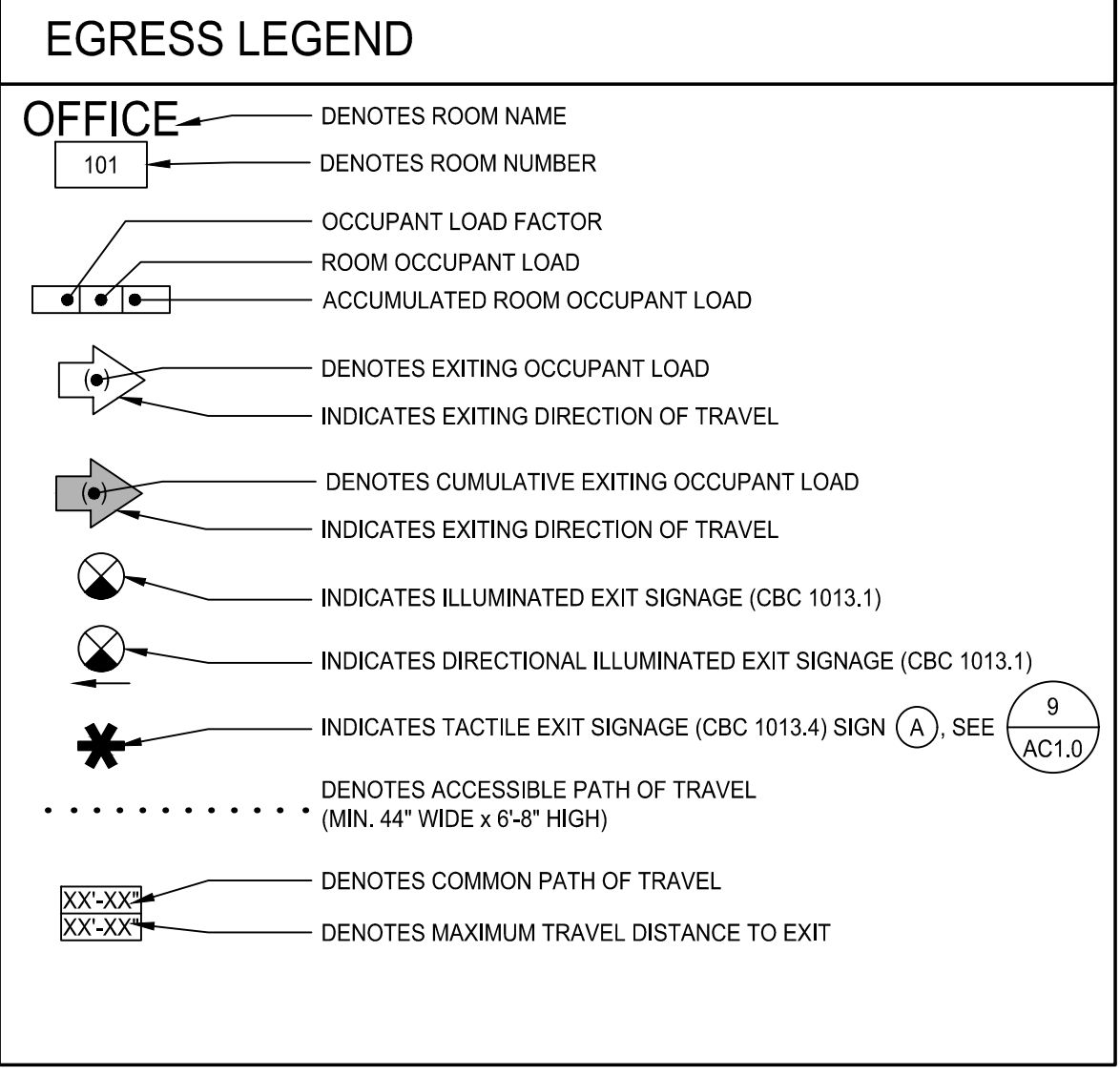
SINGLE STORY PER CBC TABLE 1017.2 & 1017.2.2:
 F-1 = 250' (WITH SPRINKLER SYSTEM)
 S-1 = 250' (WITH SPRINKLER SYSTEM)

MINIMUM REQUIRED EGRESS

SINGLE STORY PER CBC TABLE 1006.3.2(2):

OCCUPANCY	EXITS REQ'D	OCCUPANT LOAD	MAX. COMMON PATH OF TRAVEL
A, B, E, F, M, U	1	1-49	75'
S	1	1-29	75'

PER CBC 1007.1.1:
 SPRINKLERS: YES
 EXIT ARRANGEMENT SEPARATION: 1/3 THE DIAGONAL DIMENSION OF AREA



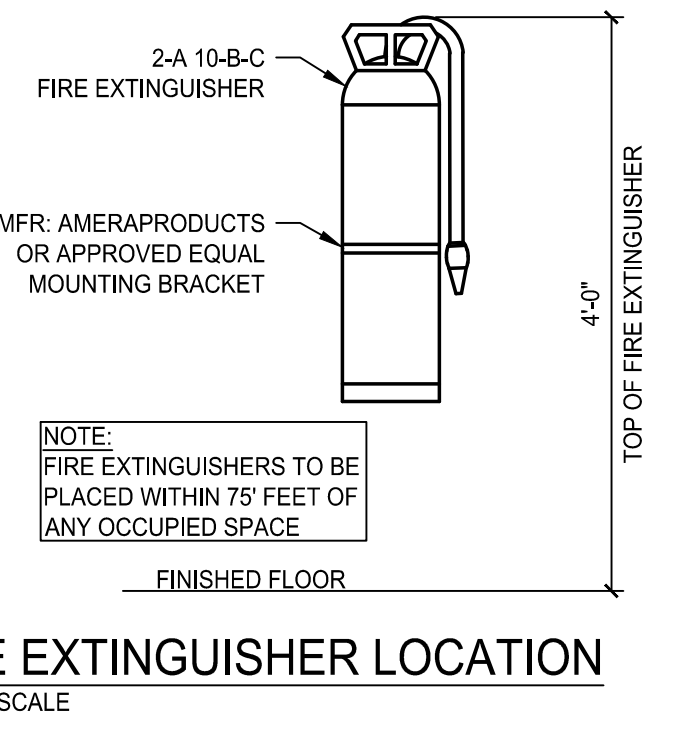
NO.	TYPE	WIDTH	HGT.	THK.	CORE	FRAME	CLOS.	REMARKS
1	A	3'-0"	7'-0"	1 3/4"	H.M.	H.M.	✓	PANIC HARDWARE
2	B	12'-0"	14'-0"	-	-	-	-	
3	B	12'-0"	14'-0"	-	-	-	-	
4	C	3'-0"	7'-0"	-	H.M.	H.M.	✓	STOREFRONT
5	C	3'-0"	7'-0"	-	H.M.	H.M.	✓	STOREFRONT
6	B	12'-0"	14'-0"	-	-	-	-	
7	B	12'-0"	14'-0"	-	-	-	-	
8	C	3'-0"	7'-0"	-	H.M.	H.M.	✓	STOREFRONT
9	C	3'-0"	7'-0"	-	H.M.	H.M.	✓	STOREFRONT
10	B	12'-0"	14'-0"	-	-	-	-	
11	B	12'-0"	14'-0"	-	-	-	-	
12	C	3'-0"	7'-0"	-	H.M.	H.M.	✓	STOREFRONT
13	C	3'-0"	7'-0"	-	H.M.	H.M.	✓	STOREFRONT
14	B	12'-0"	14'-0"	-	-	-	-	
15	B	12'-0"	14'-0"	-	-	-	-	
16	C	3'-0"	7'-0"	-	H.M.	H.M.	✓	STOREFRONT
17	C	3'-0"	7'-0"	-	H.M.	H.M.	✓	STOREFRONT
18	B	12'-0"	14'-0"	-	-	-	-	
19	B	12'-0"	14'-0"	-	-	-	-	
20	A	3'-0"	7'-0"	1 3/4"	H.M.	H.M.	✓	PANIC HARDWARE
21								OMITTED
22								OMITTED
23	A	3'-0"	7'-0"	1 3/4"	H.M.	H.M.	✓	PRIVACY, SIGNS (E) & (F) *
24	A	3'-0"	7'-0"	1 3/4"	H.M.	H.M.	✓	PRIVACY, SIGNS (E) & (F) *
25	A	3'-0"	7'-0"	1 3/4"	H.M.	H.M.	✓	PRIVACY, SIGNS (E) & (F) *
26	A	3'-0"	7'-0"	1 3/4"	H.M.	H.M.	✓	PRIVACY, SIGNS (E) & (F) *
27	A	3'-0"	7'-0"	1 3/4"	H.M.	H.M.	✓	PRIVACY, SIGNS (E) & (F) *
28	A	3'-0"	7'-0"	1 3/4"	H.M.	H.M.	✓	PRIVACY, SIGNS (E) & (F) *
29	A	3'-0"	7'-0"	1 3/4"	H.M.	H.M.	✓	PRIVACY, SIGNS (E) & (F) *
30	A	3'-0"	7'-0"	1 3/4"	H.M.	H.M.	✓	PRIVACY, SIGNS (E) & (F) *
31	A	3'-0"	7'-0"	1 3/4"	H.M.	H.M.	✓	PRIVACY, SIGNS (E) & (F) *
32	A	3'-0"	7'-0"	1 3/4"	H.M.	H.M.	✓	PRIVACY, SIGNS (E) & (F) *
33	A	3'-0"	7'-0"	1 3/4"	H.M.	H.M.	✓	PRIVACY, SIGNS (E) & (F) *
34	A	3'-0"	7'-0"	1 3/4"	H.M.	H.M.	✓	PRIVACY, SIGNS (E) & (F) *
35	A	3'-0"	7'-0"	1 3/4"	H.M.	H.M.	✓	PRIVACY, SIGNS (E) & (F) *
36	A	3'-0"	7'-0"	1 3/4"	H.M.	H.M.	✓	PRIVACY, SIGNS (E) & (F) *
37	A	3'-0"	7'-0"	1 3/4"	H.M.	H.M.	✓	PRIVACY, SIGNS (E) & (F) *
38	A	3'-0"	7'-0"	1 3/4"	H.M.	H.M.	✓	PRIVACY, SIGNS (E) & (F) *
39								OMITTED
40								OMITTED

ROOM #	ROOM NAME	OCCUPANCY	AREA (SF)
100	UNIT 1 WAREHOUSE	F-1 / S-1	2,652
101			
102			
103			
104	UNISEX RESTROOM	B	87
105	OFFICE	B	138
106	UNIT 3 WAREHOUSE	F-1 / S-1	1,196
107	UNISEX RESTROOM	B	94
108	OFFICE	B	148
109	UNIT 4 WAREHOUSE	F-1 / S-1	1,214
110	UNISEX RESTROOM	B	87
111	OFFICE	B	138
112	UNIT 5 WAREHOUSE	F-1 / S-1	1,197
113	UNISEX RESTROOM	B	94
114	OFFICE	B	148
115	UNIT 6 WAREHOUSE	F-1 / S-1	1,214
116	UNISEX RESTROOM	B	87
117	OFFICE	B	138
118	UNIT 7 WAREHOUSE	F-1 / S-1	1,199
119	UNISEX RESTROOM	B	94
120	OFFICE	B	145
121	UNIT 8 WAREHOUSE	F-1 / S-1	1,214
122	UNISEX RESTROOM	B	87
123	OFFICE	B	138
124	UNIT 9 WAREHOUSE	F-1 / S-1	2,672
125	UNISEX RESTROOM	B	94
126	OFFICE	B	148
127			
128			
129			

WALL LEGEND

- 8" CMU (7'-2" HIGH) W/ 8" GIRT WALL FRAMING ABOVE BY MBM
- 8" METAL STUD 800S200-54 @ 16" O.C. WALL FRAMING 2 HR RATING BY MBM (1'-0" TOTAL THICKNESS)
- 2x4 @ 16" O.C. FURRING WALL
- 8" METAL STUD 800S200-54 @ 16" O.C. WALL W/ R-7 MIN. INSULATION (U-FACTOR ≤ 0.151) FULL HEIGHT
- 8" METAL STUD 800S200-54 @ 16" O.C. W/ R-2 INSULATION BOARD (1/2" THICK) ON OFFICE INTERIOR & R-7 MIN. INSULATION (U-FACTOR ≤ 0.151) FULL HEIGHT
- 2x6 @ 16" O.C. WOOD STUDS W/ 5/8" GYP INTERIOR FACES OR 5/8" GREEN BOARD @ R.R.

- FRAMING NOTES:**
- SEE SHEET S1.0 FOR STRUCTURAL NOTES, ABBREVIATIONS, AND SYMBOLS.
 - SEE SHEET S4.0 FOR WOOD FRAME DETAILS NOT SPECIFICALLY REFERENCED ON THIS SHEET.
 - SEE DETAIL 1 S4.0 FOR TYPICAL SILL PLATE SPLICE DETAIL.
 - SEE DETAIL 2 S4.0 FOR FRAMING @ CORNERS.
 - SEE DETAIL 3 S4.0 FOR TYPICAL NAILING SCHEDULE.
 - SEE DETAIL 4 S4.0 FOR TYPICAL CHORD SPLICE DETAIL.
 - SEE DETAIL 5 S4.0 FOR TYPICAL HEADER FRAMING DETAIL.
 - SEE DETAIL 6 S4.0 FOR TYPICAL SILL PLATE ATTACHMENT @ NON SHEAR WALL CONDITIONS.
 - SEE DETAIL 8 S4.0 FOR TYPICAL CEILING JOIST TO WALL STUD DETAIL.
 - SEE DETAIL 9 S4.0 FOR TYPICAL TOP PLATE SPLICE DETAIL.
 - SEE DETAIL 10 S4.0 FOR TYPICAL 2 HOUR RATED WALL ASSEMBLY DETAIL.
 - SEE DETAIL 12 S4.0 FOR TYPICAL CEILING JOIST / STUD WALL CHART.



JULAN DEVELOPMENT GROUP
 PROPERTY MANAGEMENT
 COMPANY
 P.O. BOX 3148
 TURLOCK, CA 95381

ENGINEER:

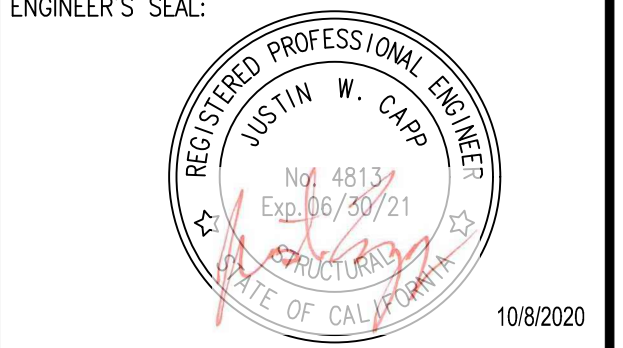
JUSTIN W. CAPP, Inc.
 ENGINEERING + DESIGN
 JUSTIN W. CAPP
 CE #61393, SE #4813
 1003 12th STREET, MODESTO, CA 95354
 PO BOX 861, MODESTO, CA 95353
 (209) 524-4774
 www.justinwocapp.com

ANDERSON-LITFIN, INC.
 1385 VENTURE LN.
 TURLOCK, CA 95380
 TEL: (209) 667-4141
 FAX: (209) 667-5267

REVISION HISTORY:

No.	DATE	ISSUANCE
3/11/20		BUILDING PLAN CHECK #1
6/18/20		BUILDING PLAN CHECK #2
10/8/20		CLIENT REVISION

USE DISCLAIMER:
 THE DESIGN DATA CONTAINED IN THIS DRAWING IS THE SOLE PROPERTY OF JUSTIN W. CAPP AND MAY NOT BE REPRODUCED OR USED WITHOUT WRITTEN PERMISSION. THIS DRAWING IS NOT TO BE USED FOR CONSTRUCTION UNTIL SEALED AND DATED. THE END USER IS RESPONSIBLE FOR COORDINATION OF FIELD CONDITIONS, DIMENSIONS, AND WORK NOT OTHERWISE SHOWN BY THIS DRAWING.



KEY PLAN:

PROJECT NAME:
**ENTERPRISE PARK
 LOTS 4 & 22**

DRAWING TITLE:
FLOOR & EGRESS PLAN

CAD FILE NAME:
 19182_A1.0.DWG

DRAWING SCALE:
 AS NOTED

JOB NUMBER: 19182
 DRAWN: MN
 CHECKED: JWC
 DATE: 07/02/19
 SHEET NUMBER: A1.0