

PLUMMER STREET

R=20'
L=31.41'

262.01'

283.46'

303.45'

12' BY 16'
ROLL UP
TRUCK DOOR

CANOPY
88 s.f.

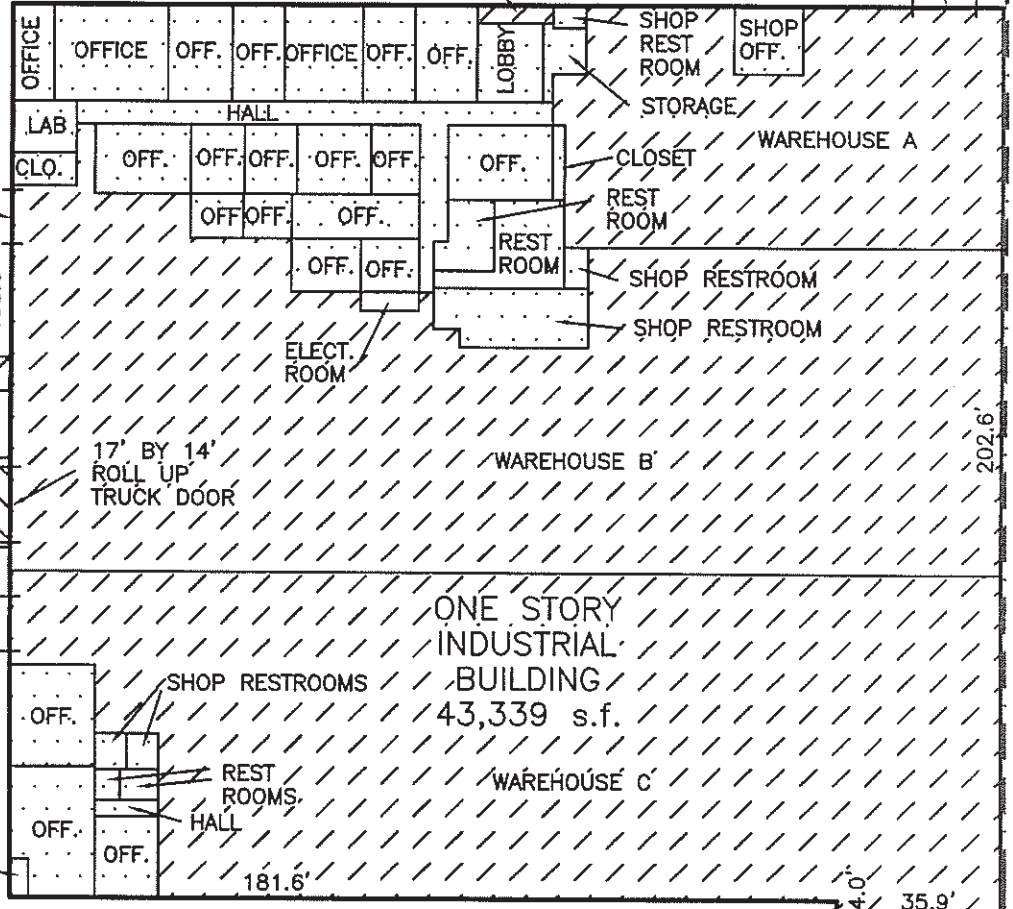
TRUCK WELL
748 s.f.

COV. ENTRY

COV. ENTRY

217.5'

14' BY 14'
ROLL UP
TRUCK DOOR



PROJECT: <h2 style="text-align: center;">20450 PLUMMER STREET</h2>	APPRAISER: <h2 style="text-align: center;">S. Pearlman & Associates</h2>	
PAGE: <h3 style="text-align: center;">1 OF 1</h3>	DATE: <h3 style="text-align: center;">January 2014</h3>	SCALE: <h3 style="text-align: center;">1" = 40'</h3>