

FOR LEASE
66 MINT
SOMA
HISTORIC LANDMARK BUILDING



FOR LEASE

PROPERTY HIGHLIGHTS

66 MINT

SOMA

THIRD FLOOR

+/- 5,033 RSF



-
- 3rd Floor- Full Floor Identity
 - One (1) glass conference room
 - One (1) glass meeting room
 - Open Office
 - Kitchen
 - Polished concrete flooring
 - Operable Windows
 - Great natural light
 - High exposed ceilings



VIRTUAL TOUR
LINK



All material presented herein is intended for informational purposes only. Information is compiled from sources deemed reliable but is subject to errors, omissions, changes in price, condition, sale, or withdraw without notice. No statement is made as to accuracy of any description. All measurements and square footages are approximate. Exact dimensions can be obtained by retaining the services of an architect or engineer. This is not intended to solicit property already listed.

FOR LEASE

66 MINT

SOMA

PROPERTY PHOTOS

THIRD FLOOR
+/- 5,033 RSF



All material presented herein is intended for informational purposes only. Information is compiled from sources deemed reliable but is subject to errors, omissions, changes in price, condition, sale, or withdraw without notice. No statement is made as to accuracy of any description. All measurements and square footages are approximate. Exact dimensions can be obtained by retaining the services of an architect or engineer. This is not intended to solicit property already listed.

FOR LEASE

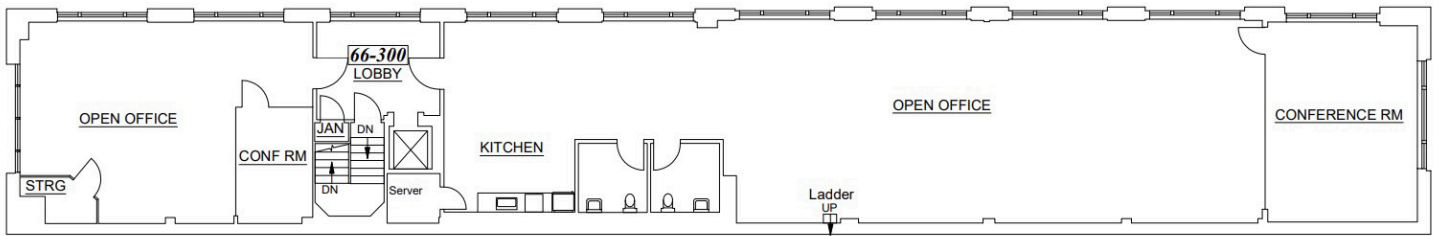
66 MINT

SOMA

FLOOR PLAN

THIRD FLOOR

+/- 5,033 RSF

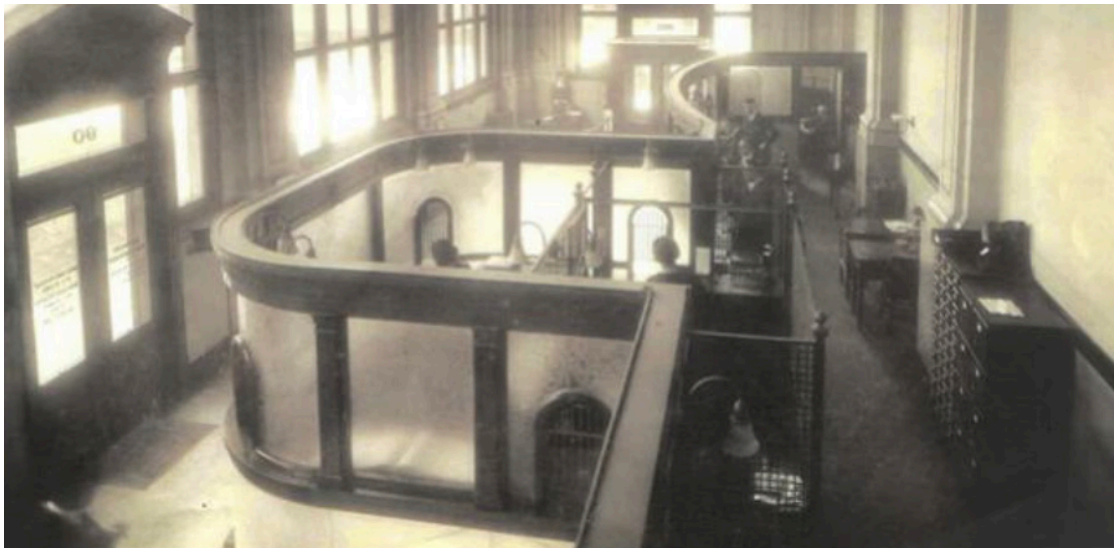


66 MINT

SOMA

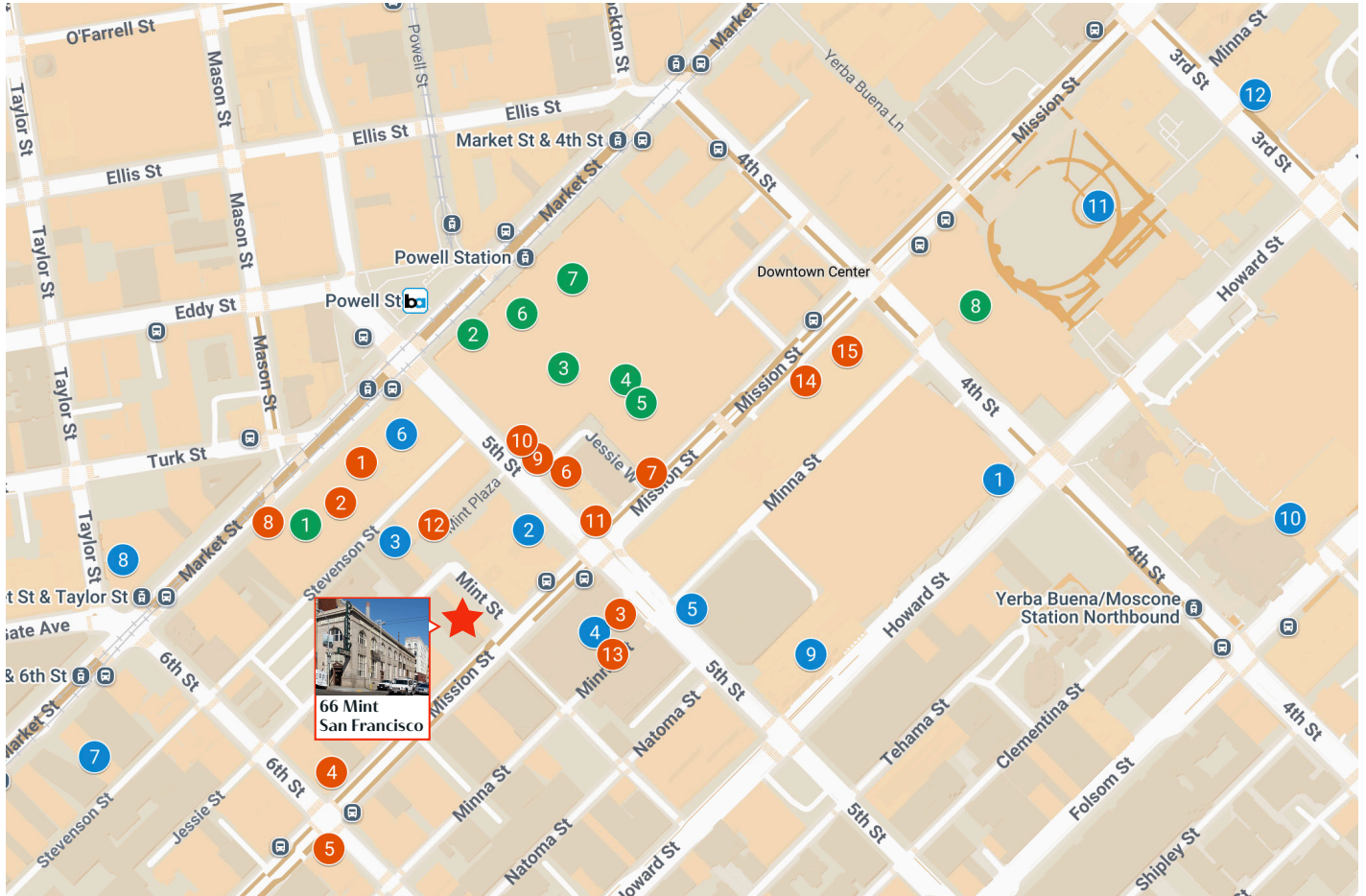
HISTORIC LANDMARK BUILDING

Stretching from 66 Mint to 923 Mission Street has been home of San Francisco Provident since 1914. The historical landmark building and business was founded by such storied San Francisco civic leading families as the Fleishaker's, the Hellman's and the Crocker's, just to name a few. The building sold in 1951 and has been owned and operated by the same family for 4 generations.



66 MINT

SOMA



NEARBY:

- 1 Moscone West
- 2 The San Francisco Mint
- 3 Minerva University
- 4 San Francisco Chronicle
- 5 University of Pacific (UOP), San Francisco
- 6 Federal Trade Commission
- 7 International Art Museum of America
- 8 The Warfield
- 9 InterContinental San Francisco
- 10 Yerba Buena Ice Skating & Bowling Center
- 11 Yerba Buena Gardens
- 12 San Francisco Museum of Modern Art

RESTAURANTS & CAFES:

- 1 The Melt
- 2 Casa Borinqueña
- 3 Java Trading Co.
- 4 The Bite
- 5 Miss Saigon
- 6 Zevi Cafe & Bistro
- 7 Executive Order Bar & Lounge
- 8 Snöberg
- 9 The Cavalier
- 10 S&R Lounge
- 11 Soma Restaurant & Bar
- 12 Burma Love
- 13 Off the Grid: 5th & Minna
- 14 Mariposas
- 15 Mel's Drive-In

SHOPPINGS:

- 1 IKEA
- 2 Ray-Ban
- 3 Foot Locker
- 4 H&M
- 5 BOSS Shop - Macy's Shop
- 6 Union Square San Francisco Centre
- 7 Jo Malone London at Bloomingdale's
- 8 Metreon



All material presented herein is intended for informational purposes only. Information is compiled from sources deemed reliable but is subject to errors, omissions, changes in price, condition, sale, or withdraw without notice. No statement is made as to accuracy of any description. All measurements and square footages are approximate. Exact dimensions can be obtained by retaining the services of an architect or engineer. This is not intended to solicit property already listed.

S. F. PROVIDENT LOAN ASSN.

FOR LEASE
66 MINT
SOMA
HISTORIC LANDMARK BUILDING

PLEASE CONTACT EXCLUSIVE BROKERS:

Bradley L. Colton

(415) 834-1600

bcolton@coltoncommercialsf.com

License #: 00805116

Bryan B. Colton

(415) 595-6959

bryancolton@coltoncommercialsf.com

License #: 02111407

Casaldra Andreassen

(631)-478-8343

casaldra@coltoncommercialsf.com

License #: 02028086

Exclusively Represented By:



San Francisco, CA 94103
(415) 834-1600