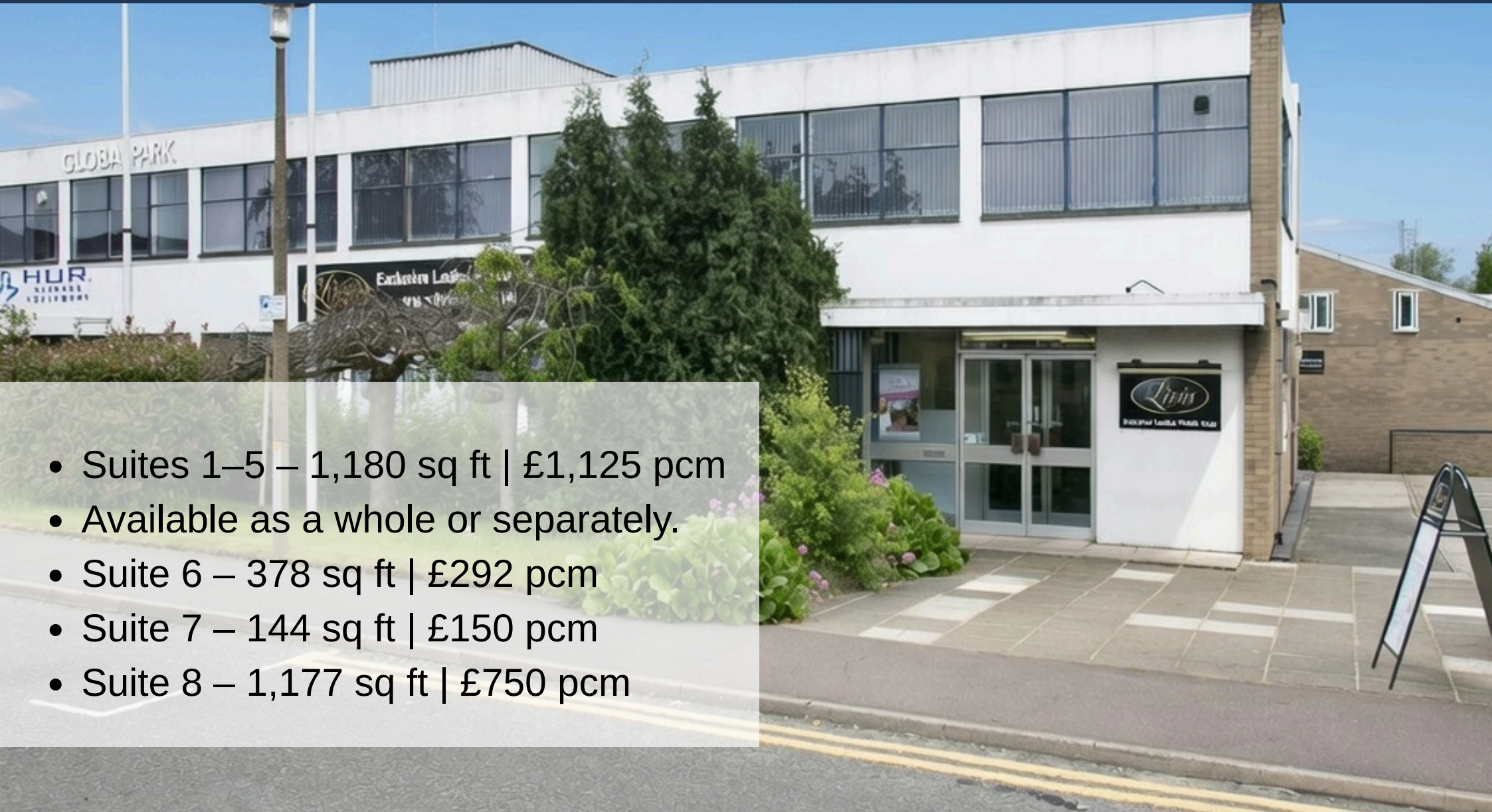


Office Suites To Let – Global House, Moorside, Colchester (CO1 2TJ)



- Suites 1–5 – 1,180 sq ft | £1,125 pcm
- Available as a whole or separately.
- Suite 6 – 378 sq ft | £292 pcm
- Suite 7 – 144 sq ft | £150 pcm
- Suite 8 – 1,177 sq ft | £750 pcm

020 8252 8000 Dockmasters House, 1 Hertsmere Road, London

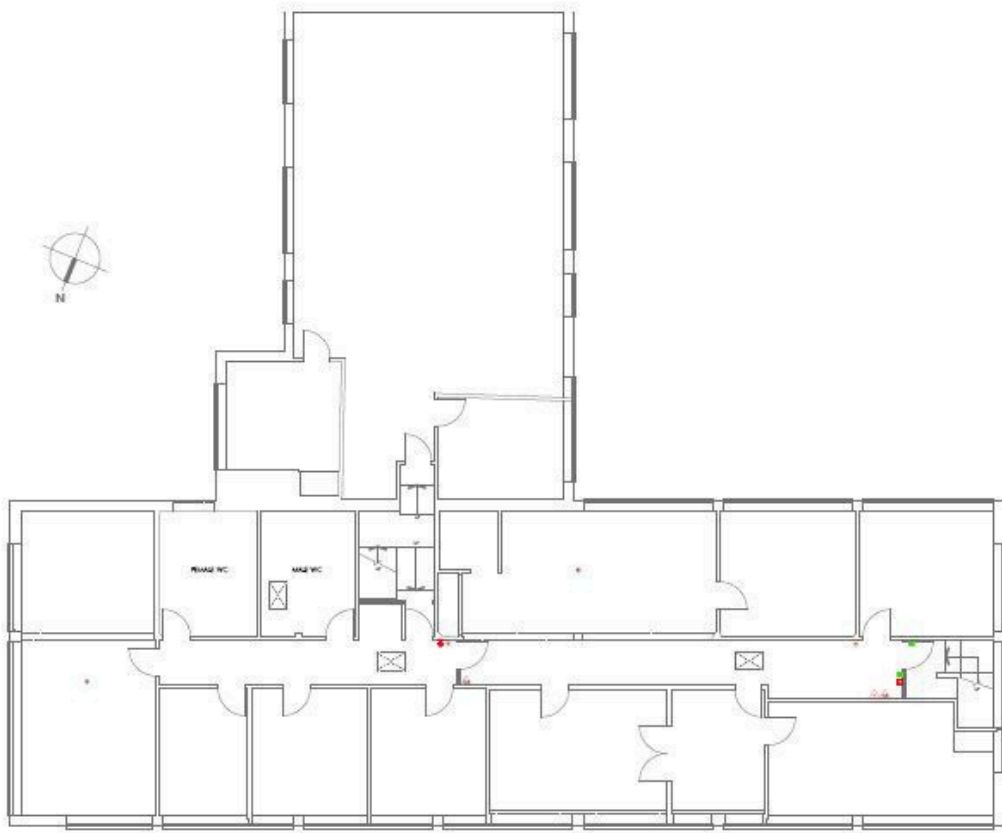
Key Features

- Prominent location in Moorside, Colchester
- Convenient access to City Centre and inner ring road network
- Easy connections to A12/A120
- Mainline rail links to London Liverpool Street (~55 mins)
- Service charge & insurance included
- Flexible suite options (Suites 1–5 available together or separately)

The premises are prominently located within Moorside, a mixed commercial and leisure area benefiting from strong links to Colchester City Centre and the inner ring road system, providing convenient access to the A12/A120. Colchester railway station is close by, with mainline services to London Liverpool Street in approximately 55 minutes.



020 8252 8000 Dockmasters House, 1 Hertsmere Road, London



Important Notice

The information, photos and plans provided are for general informative / illustrative purposes only. The information is believed to be correct, but no express or implied representation or warranty is made by Petchey as to its accuracy or completeness. In person viewings are encouraged.