

# FOR LEASE

1335 S HILL ST  
LOS ANGELES, CA 90015

# ±6,567 SF

TWO STORY OFFICE  
WAREHOUSE IN DTLA  
SOUTH PARK

For more information, please contact:

**Daniel Park**

(213) 446-0396

[Danielpark777@hotmail.com](mailto:Danielpark777@hotmail.com)

DRE# 01227056

**PARK INDUSTRIAL**  
SPECIALIZING IN INDUSTRIAL REAL ESTATE SERVICES

Park Industrial Realty  
800 McGarry St, 5<sup>th</sup> Floor  
Los Angeles, CA 90021  
Corporation DRE# 01983713

Building SF:	6,567 SF	<ul style="list-style-type: none"><li>• Clean space in Downtown LA South Park close to LA Convention center, LA Live, Crypto.com Arena</li><li>• 2 story building</li><li>• 100% air conditioned throughout the entire space</li><li>• Surrounded by brand new apartment buildings</li><li>• Just south of Pico Blvd</li><li>• Great for any retail, showroom, e-commerce</li></ul>
Land SF:	3,497 SF	
Year Built:	1994	
Ceiling Height:	10'	
Construction:	Concrete Block	
Zoning:	[HB2-G1-5] [CX2-FA] [CPIO-O]	
Lease Rate:	\$7,500 (\$1.14/SF) Gross	

All information has been furnished from sources which we deem reliable, but for which we assume no liability. All measurements are approximate. Broker/Owner do not warrant its accuracy. Buyer/Lessee must verify all information.

5134

25 SHEET

P. A. 26-19 5134-18 & 19

TRA 13264

REVISED 830517328-84 880323-88

88070506012001 20020912 2020030319011001-23

2021101373016001-23

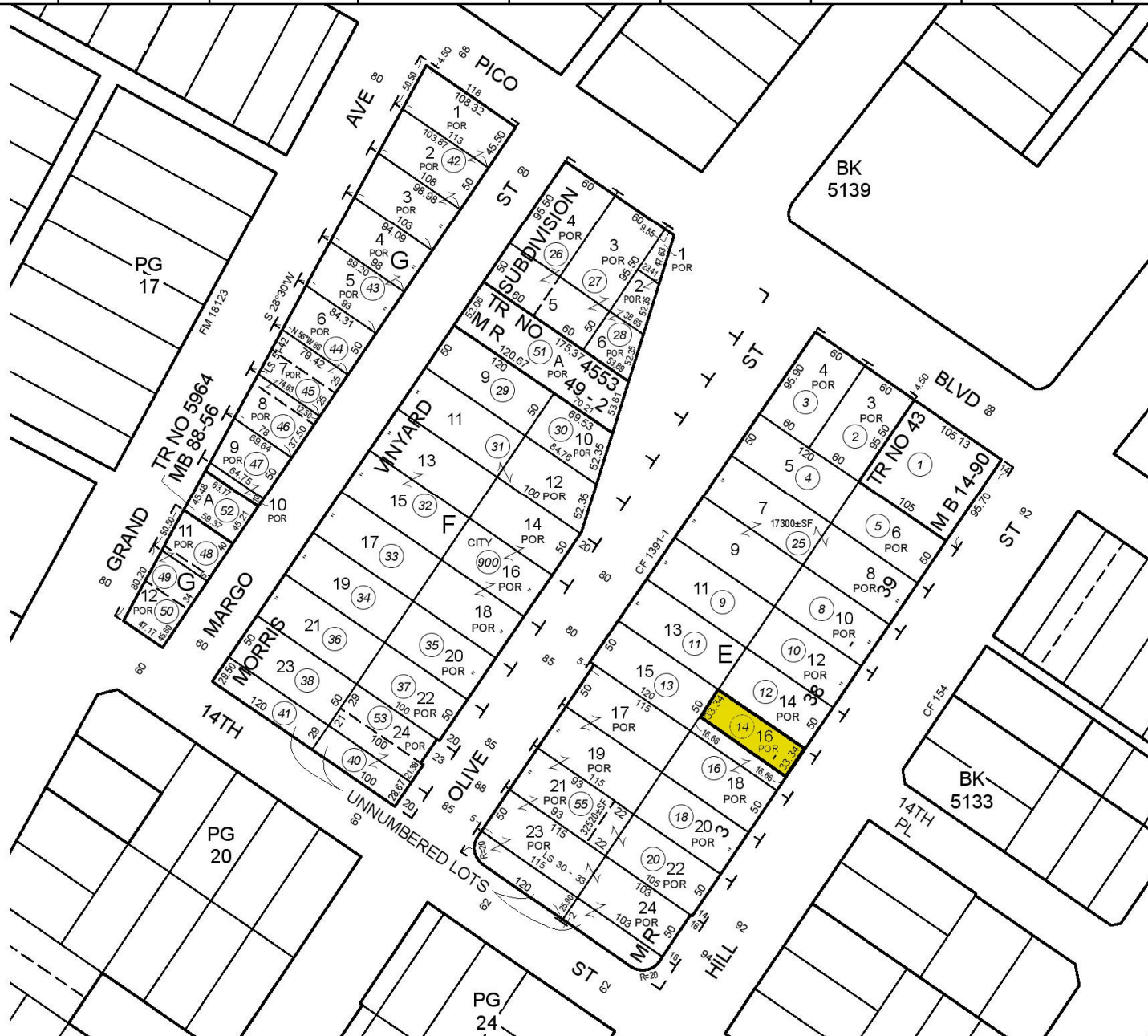
SEARCH NO

OFFICE OF THE ASSESSOR COUNTY OF LOS ANGELES COPYRIGHT © 2002

2022



MAPPING AND GIS SERVICES SCALE 1" = 100'



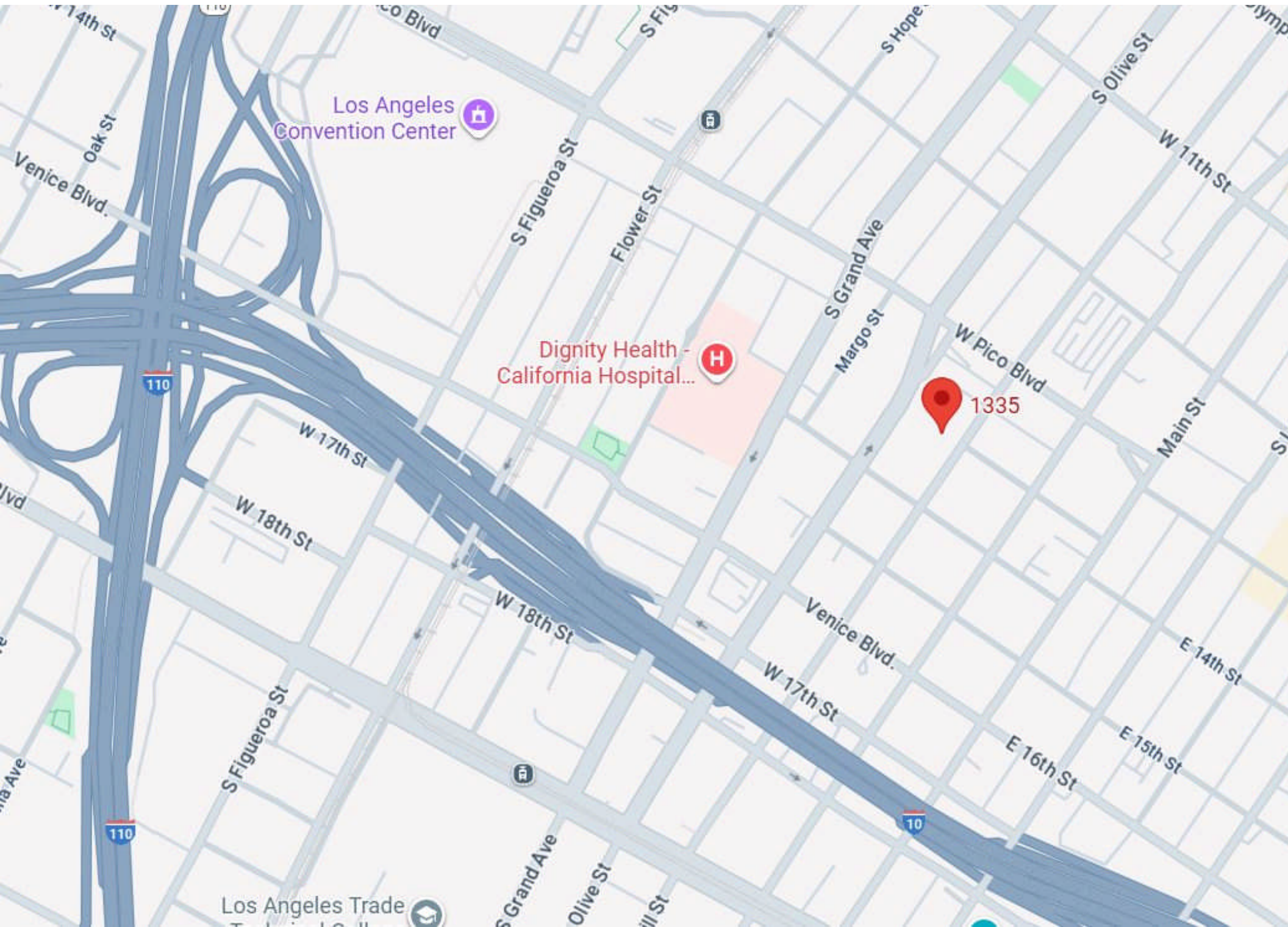
BK 5139

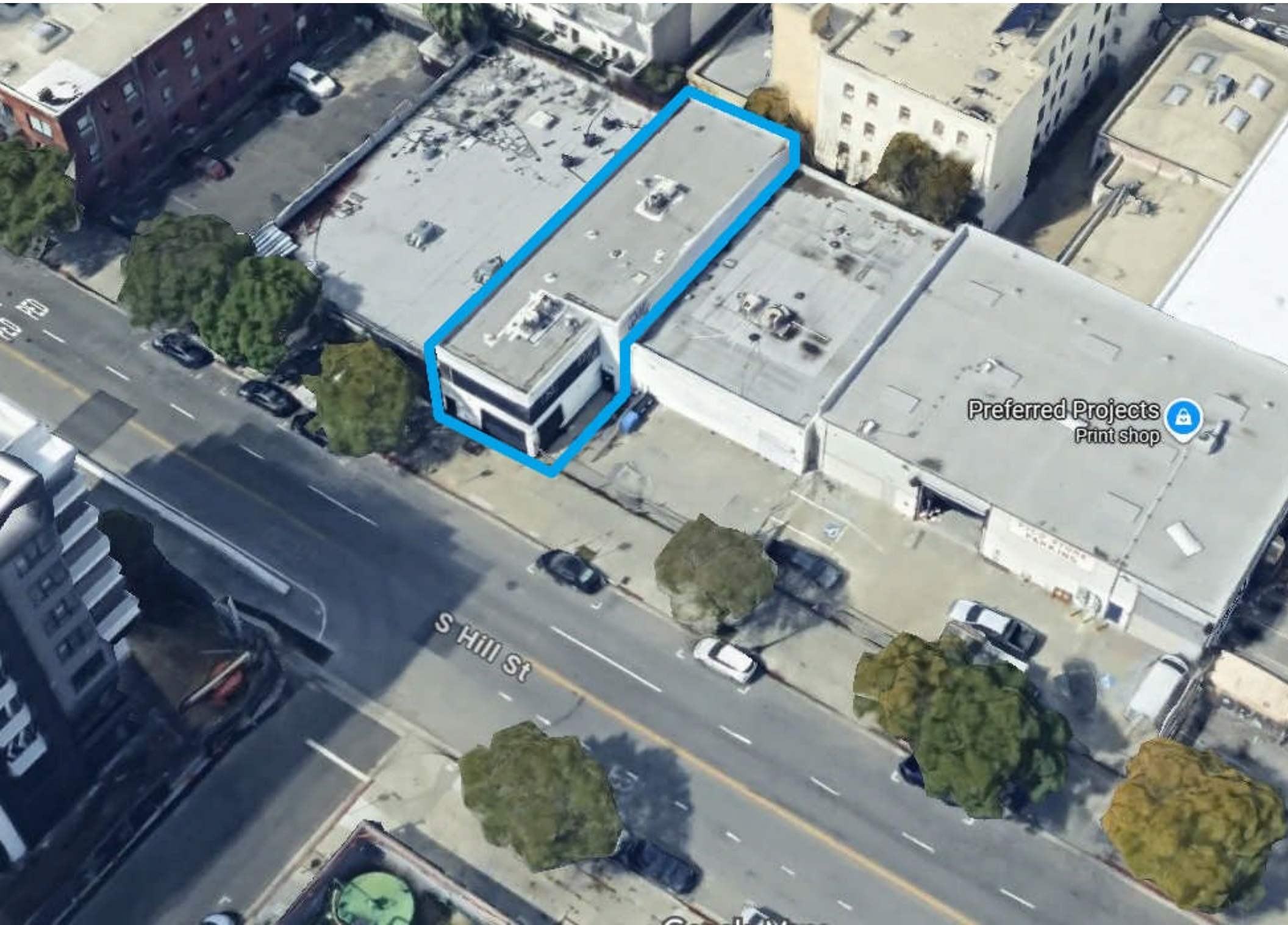
BK 5133

TR NO 5964 MB 88-36

TR SUBDIVISION MR NO 4553 A 49-2

TR NO 43 MB 14-90





Preferred Projects   
Print shop

S Hill St

