

**FOR LEASE**

3295 Business Park Drive  
Vista, CA 92081



# Remodeled Retail Space for Lease

**EMMETT CAHILL**  
619.243.8470  
ecahill@qfcre.com  
BRE #02033604

**PETER WRIGHT**  
619.243.8450  
pwright@qfcre.com  
BRE #01846272

*The information contained here has been obtained from sources considered to be reliable, but no guarantee of its accuracy is made by this company. In addition, no representation is made respecting zoning, condition of title, dimensions or any matters of a legal or environmental nature. Such matters should be referred to legal counsel for determination. Terms and conditions are subject to change without prior notice. Subject to errors and omissions.*



## SPACE AVAILABLE

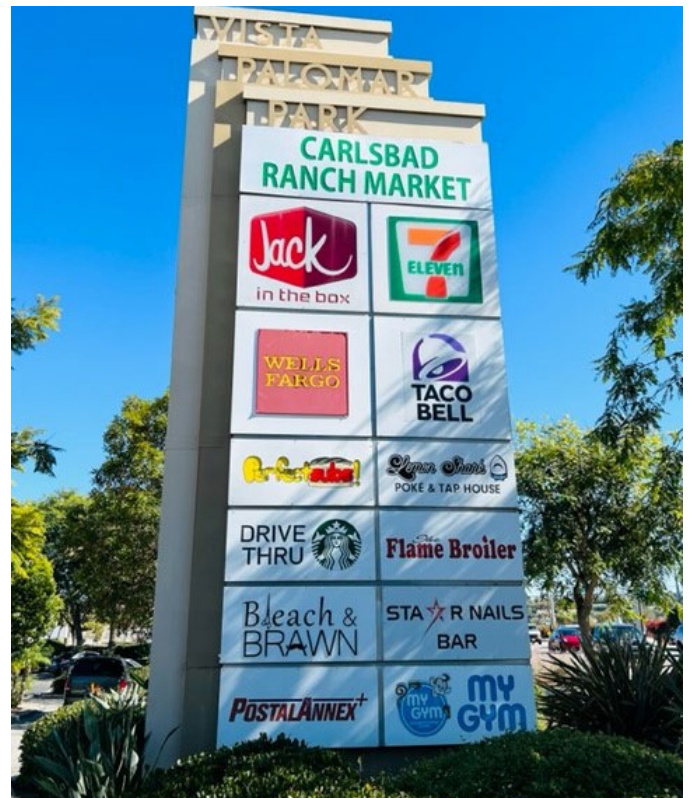
807 SF

## PROPERTY HIGHLIGHTS

- Mostly open layout with private restroom
- Former real estate office
- Completely remodeled center
- Monument signage
- Good parking
- Neighboring tenants include Starbucks, Flame Broiler & Greek Grill

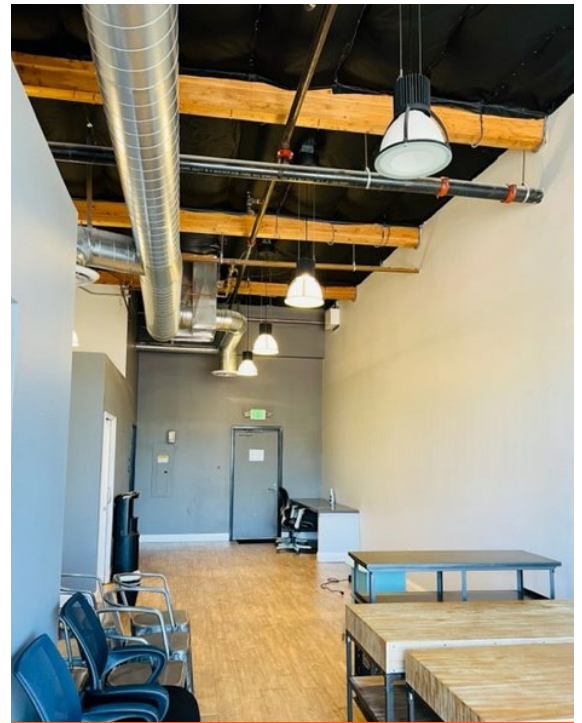
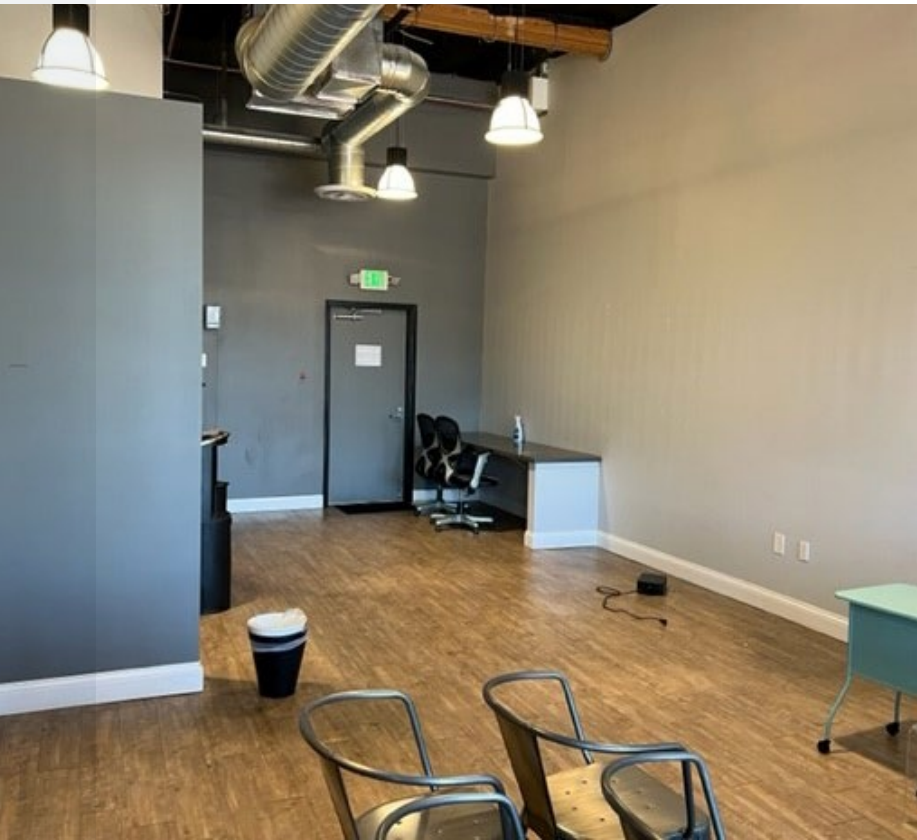
## RATE

\$2.50 psf + NNN (\$1.75)



**PETER WRIGHT**  
619.243.8450  
pwright@qfcre.com  
BRE #01846272

*The information contained here has been obtained from sources considered to be reliable, but no guarantee of its accuracy is made by this company. In addition, no representation is made respecting zoning, condition of title, dimensions or any matters of a legal or environmental nature. Such matters should be referred to legal counsel for determination. Terms and conditions are subject to change without prior notice. Subject to errors and omissions.*

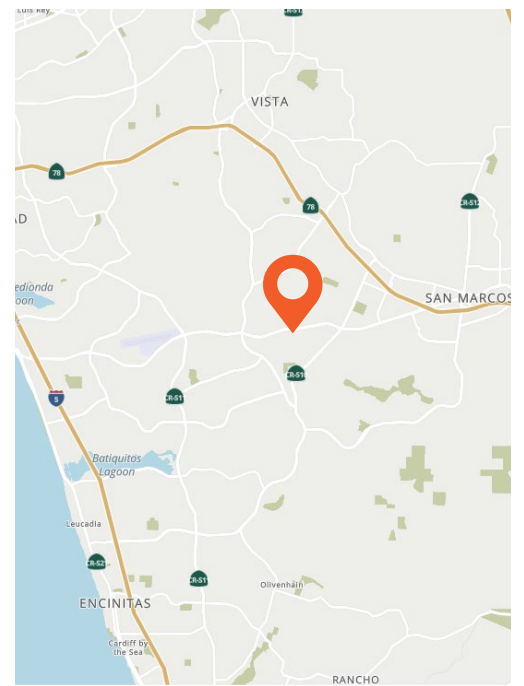


**PHOTOS**



**PETER WRIGHT**  
619.243.8450  
pwright@qfcre.com  
BRE #01846272

*The information contained here has been obtained from sources considered to be reliable, but no guarantee of its accuracy is made by this company. In addition, no representation is made respecting zoning, condition of title, dimensions or any matters of a legal or environmental nature. Such matters should be referred to legal counsel for determination. Terms and conditions are subject to change without prior notice. Subject to errors and omissions.*



Located in the prestigious Bressi Ranch community and benefits from the strong daytime population in the Palomar Airport Business Park.

## POPULATION

**3 MILES**

76,753

## AVERAGE HHI

**3 MILES**

\$144,018

## DAYTIME POPULATION

**3 MILES**

91,366

**PETER WRIGHT**  
619.243.8450  
pwright@qfcre.com  
BRE #01846272

*The information contained here has been obtained from sources considered to be reliable, but no guarantee of its accuracy is made by this company. In addition, no representation is made respecting zoning, condition of title, dimensions or any matters of a legal or environmental nature. Such matters should be referred to legal counsel for determination. Terms and conditions are subject to change without prior notice. Subject to errors and omissions.*

**FOR LEASE**

3295 Business Park Drive  
Vista, CA 92081



# Contact Information

**QFC REAL ESTATE**

1495 Pacific Highway, Suite 450  
San Diego, CA 92101  
619.243.8454 • [qfcre.com](http://qfcre.com)

**PETER WRIGHT**

619.243.8450  
[pwright@qfcre.com](mailto:pwright@qfcre.com)  
BRE #01846272

*The information contained here has been obtained from sources considered to be reliable, but no guarantee of its accuracy is made by this company. In addition, no representation is made respecting zoning, condition of title, dimensions or any matters of a legal or environmental nature. Such matters should be referred to legal counsel for determination. Terms and conditions are subject to change without prior notice. Subject to errors and omissions.*