

St Andrew Street





On-site Café

Located on the ground floor, members enjoy barista-made coffee throughout the day



Dog Friendly

We love our furry friends. Well behaved dogs are welcomed across all our locations.



Meeting Spaces

A variety of fully-spec'd meeting rooms and phone booths are available.



Bike Storage

Right next to the entrance, members will be able to securely stow their 2-wheels on-site



Wellness Space

A lockable space for spending time alone. Perfect for prayer, meditation or breast feeding



Showers

For those early-risers and gym-goers, we've got you covered in the morning

Map



Techspace St Andrew Street

9–13 St Andrew Street, London, EC4A 3AF

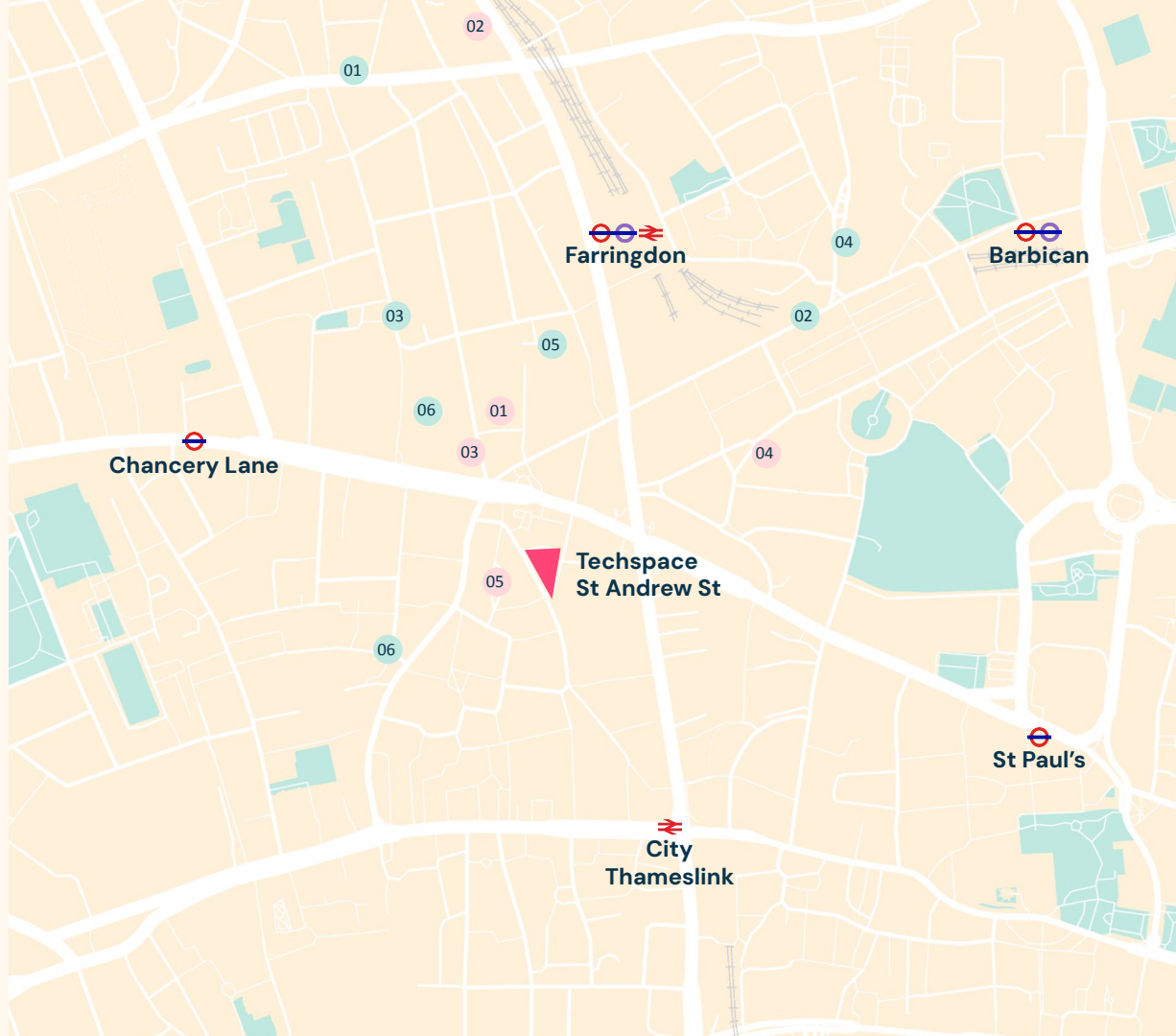
- <6 mins walk to Chancery Lane (Central Line)
- <7 mins walk to Farringdon underground (Metropolitan, Circle, Hammersmith & City Lines)
- <8 mins walk to City Thameslink station
- <12 mins walk to Barbican underground (Metropolitan, Circle, Hammersmith & City Lines)
- Mainline links from Farringdon
- Elizabeth Line (East <> West: Reading to Shenfield)
- Thameslink (North <> South: Bedford to Brighton)

Food spots

- 01 Ngon Ngon
- 02 Smiths of Smithfield
- 03 Leather Lane
- 04 St John
- 05 Bleeding Heart Bistro
- 06 Pret-A-Manger

After work

- 01 Ye Olde Mitre
- 02 The Piano Works
- 03 Bounce
- 04 Urban Golf
- 05 The Gym Group





Indicative visuals only

Ground Floor Café and Members' Lounge



Indicative visuals only

20 Person Private Office



Indicative visuals only

Premium Boardroom



Indicative visuals only

Shared Teapoint



Indicative visuals only

6th Floor – Self-contained Unit



Indicative visuals only

Private Teapoint – 6th Floor



Indicative visuals only

Private Teapoint – 6th Floor

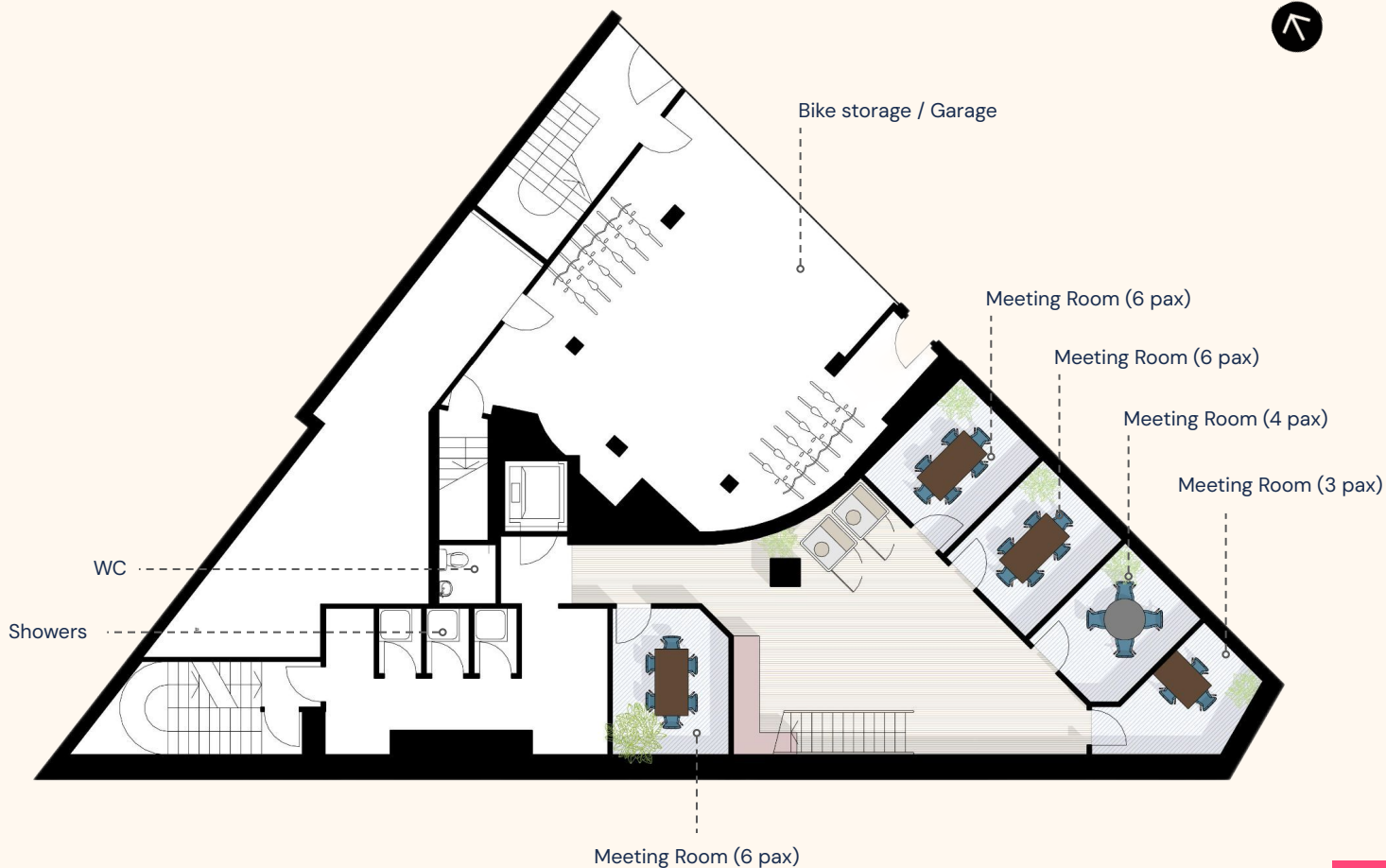


Floor LG

Shared Floor

Amenities

- 1x Meeting room (3pax)
- 1x Meeting room (4 pax)
- 3x Meeting room (6 pax)
- 2x Phone booths
- 3x Showers
- 1x Lift
- 1x WC
- Bike storage



Floor G

Shared Floor

Amenities

- 1x Boardroom (16 pax)
- 1x Meeting room (4 pax)
- 2x Phone booths
- 1x Members café
- 1x Calm Room
- 1x Touchdown table (6 pax)
- 32x Seating positions
- 1x Lift
- 2x WCs



Floor 1

Shared Floor

Private Offices

Unit 1.1 (20 wks)

Unit 1.2 (20 wks)

Unit 1.3 (12 wks)

Amenities

1x Teapoint

1x Breakout

2x Phone booths

1x Touchdown table

1x Lift

2x WCs



Floor 2

Shared Floor

Private Offices

Unit 2.1 (12 wks)

Unit 2.2 (8 wks)

Unit 2.3 (20 wks)

Unit 2.4 (8 wks)

Amenities

1x Meeting Room (6 pax)

1x Teapoint & breakout

2x Phone Booths

1x Lift

2x WCs



Floor 3

Shared Floor

Private Offices

Unit 3.1 (12 wks)

Unit 3.2 (8 wks)

Unit 3.3 (20 wks)

Unit 3.4 (8 wks)

Amenities

1x Meeting Room (6 pax)

1x Teapoint & breakout

1x Phone Booth

1x Lift

2x WCs



Floor 4

Shared Floor

Private Offices

Unit 4.1 (20 wks)

Unit 4.2 (20 wks)

Unit 4.3 (8 wks)

Amenities

1x Meeting Room (6 pax)

1x Teapoint & breakout

1x Phone Booth

1x Lift

2x WCs



Floor 4

Self-contained Floor

Private Offices

Unit 4.0 (42 desks)

2480 sqft

Private Amenities

1x Meeting Room (6 pax)

1x Meeting Room (12 pax)

1x Teapoint & breakout

1x Phone Booth

1x Lift

2x WCs



Floor 5

Shared Floor

Private Offices

Unit 5.1 (20 wks)

Unit 5.2 (20 wks)

Unit 5.3 (8 wks)

Amenities

1x Meeting Room (6 pax)

1x Teapoint & breakout

1x Phone Booth

1x Lift

2x WCs



Floor 6

Self-Contained Floor

Private Offices

Unit 6.0 (32 wks)

1744 sqft

Private Amenities

1x Meeting Room (6 pax)

1x Teapoint & breakout

1x Roof terrace

1x Lift

1x WC



Spoilt for choice

Located between Chancery Lane and Farringdon St Andrew Street is perfectly positioned for foodies, coffee lovers, and professionals.

For a quick, quality bite, Leather Lane Market is a must—offering a rotating mix of street food, from falafel wraps to Korean fried chicken.

Head to Smiths of Smithfield for hearty British fare with a rooftop terrace or treat yourself at St John Restaurant—an institution for nose-to-tail dining. For something more relaxed, Ngon Ngon offer a fast-casual experience, ideal for a team lunch.

After Work the area boasts a wealth of pubs like Ye Olde Mitre—one of the oldest pubs in London, from the 1500's!

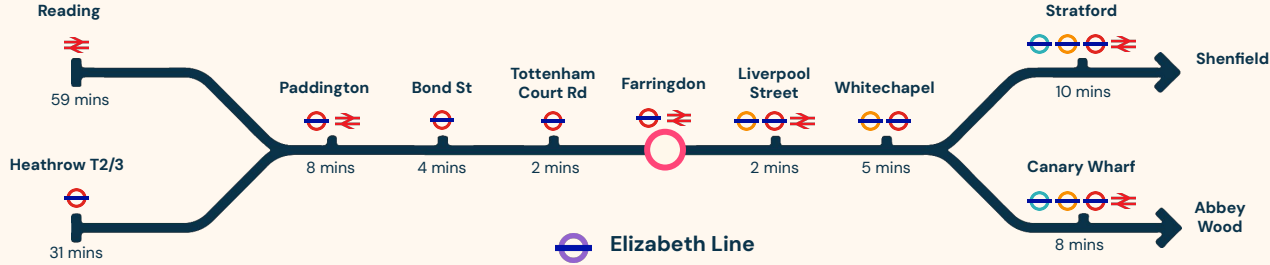


Transport links

Travel times from Chancery Lane

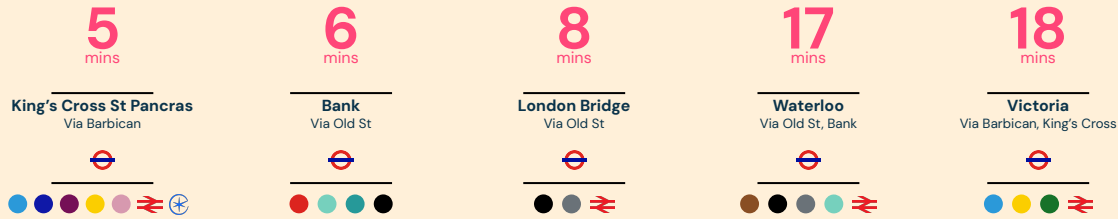
6 minute walk – Central Line

7 minutes walk – Farringdon



Travel times via Farringdon or Barbican

7 min walk to Farringdon, 12 min walk to Barbican



Where the status quo don't go

Our members are forward thinking, innovative teams with technology at their core.

As a result, we have a rich community where members can build connections, join educational talks and rub shoulders with peers who've walked in their shoes.

The logo for PECO, featuring the letters 'PECO' in a bold, sans-serif font.The logo for AGICAP, featuring a circular icon with a stylized globe or network pattern above the text 'AGICAP'.The logo for Google Cloud, featuring the Google Cloud icon (a cloud with a checkmark) and the text 'Google Cloud'.The logo for TESLA, featuring the Tesla logo (a stylized 'T' with a lightning bolt) and the text 'TESLA'.The logo for zoominfo, featuring a stylized 'Z' icon and the text 'zoominfo'.The logo for databricks, featuring a stylized 'D' icon and the text 'databricks'.The logo for heidi, featuring a stylized 'h' icon and the text 'heidi'.The logo for AWS, featuring the text 'aws' and the Amazon smile arrow.The logo for WORLD COIN, featuring a stylized flower or star icon and the text 'WORLD COIN'.The logo for LILT, featuring a stylized 'L' icon and the text 'LILT'.The logo for ANTLER, featuring a stylized 'A' icon and the text 'ANTLER'.The logo for Unity, featuring a stylized cube icon and the text 'Unity'.The logo for zoa, featuring the text 'zoa' in a bold, lowercase, sans-serif font.The logo for Lendico, featuring a stylized diamond icon and the text 'Lendico'.The logo for Dext, featuring the text 'Dext' in a bold, lowercase, sans-serif font.The logo for ama, featuring a stylized cluster of dots icon and the text 'ama'.

Some of our alumni

The logo for GoStudent, featuring a stylized hand icon and the text 'GoStudent'.The logo for Freetrade, featuring a stylized flame or wave icon and the text 'Freetrade'.The logo for silverfin, featuring a stylized 'S' icon and the text 'silverfin'.The logo for samsara, featuring a stylized circular icon and the text 'samsara'.

A community where the status quo don't go

Since 2012, we've made it our business to know tech-driven businesses. And it's our tech-only membership that separates us from the rest.

- Build valuable connections with members across Europe who've been where you are now, and walked in your shoes
- Leadership courses and programmes to inspire your rising stars and spark passion in your teams
- Rub shoulders with fellow change-makers at our events, breakfasts, socials and dinners



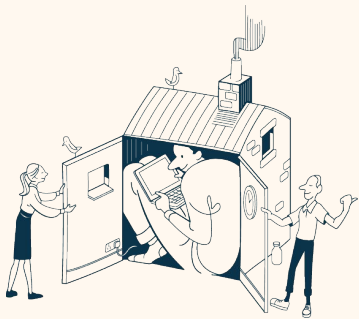
Community Partners:



Space that adapts to your needs

You need a flexible offering that adapts to your needs, not the other way around.

- Memberships designed to adapt to your future needs
- Clever workplace insights and design services to help you get the most from your space
- Bookable spaces for away days and investor meets or bookable hotdesks for when you're on the move



Supported by:

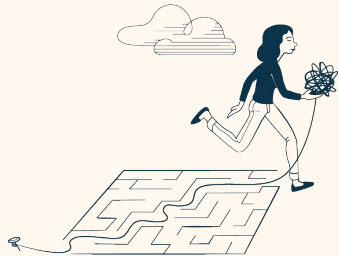
BUREAU

officeprinciples

Everything you need and nothing you don't

Working hard needn't be hard work. While you focus on the things that matter most, we'll take care of the rest.

- Ultra fast Wi-Fi, meeting room AV, configurable A/C. We've got all the basics taken care of
- Generous desks and shared areas that give you room to think and space to breathe
- Get your kicks without leaving the building with unlimited fresh, barista coffee



Interested? Get in touch to speak to our team about pricing and availability.

enquiries@techspace.co

+44 (0)20 3326 7249



thank you