

# 57 WEST 38TH ST

MIDTOWN | NYC

WEST 38TH STREET &  
6TH AVENUE



# 57 WEST 38<sup>TH</sup> ST

## SIZE

Ground	4,000 SF
Mezz.	1,000 SF
Cellar	4,600 SF

## CEILING HEIGHT

Ground	16 feet
Mezz.	9 feet
LL	12 feet

## FRONTAGE

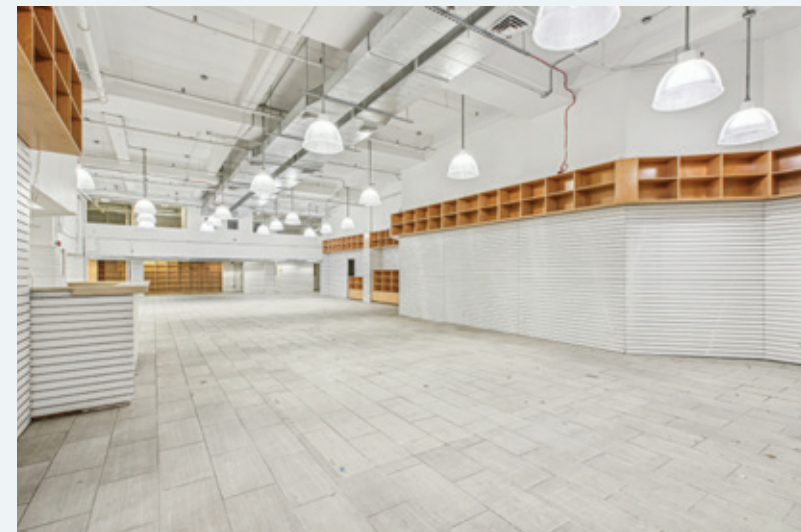
35 feet

## NEIGHBORS ON THE BLOCK

- Refinery Rooftop
- Culture Espresso
- Bstro 38
- 38 Food Court
- Russian Manicure
- Hotel Hendricks
- Annam Cafe
- Matto Espresso
- Three Hot Pot & BBQ
- Isla & Co
- Archer Hotel
- Americana Inn
- Gongcha
- Winnie's Jazz Bar
- Class on 38th
- CVS

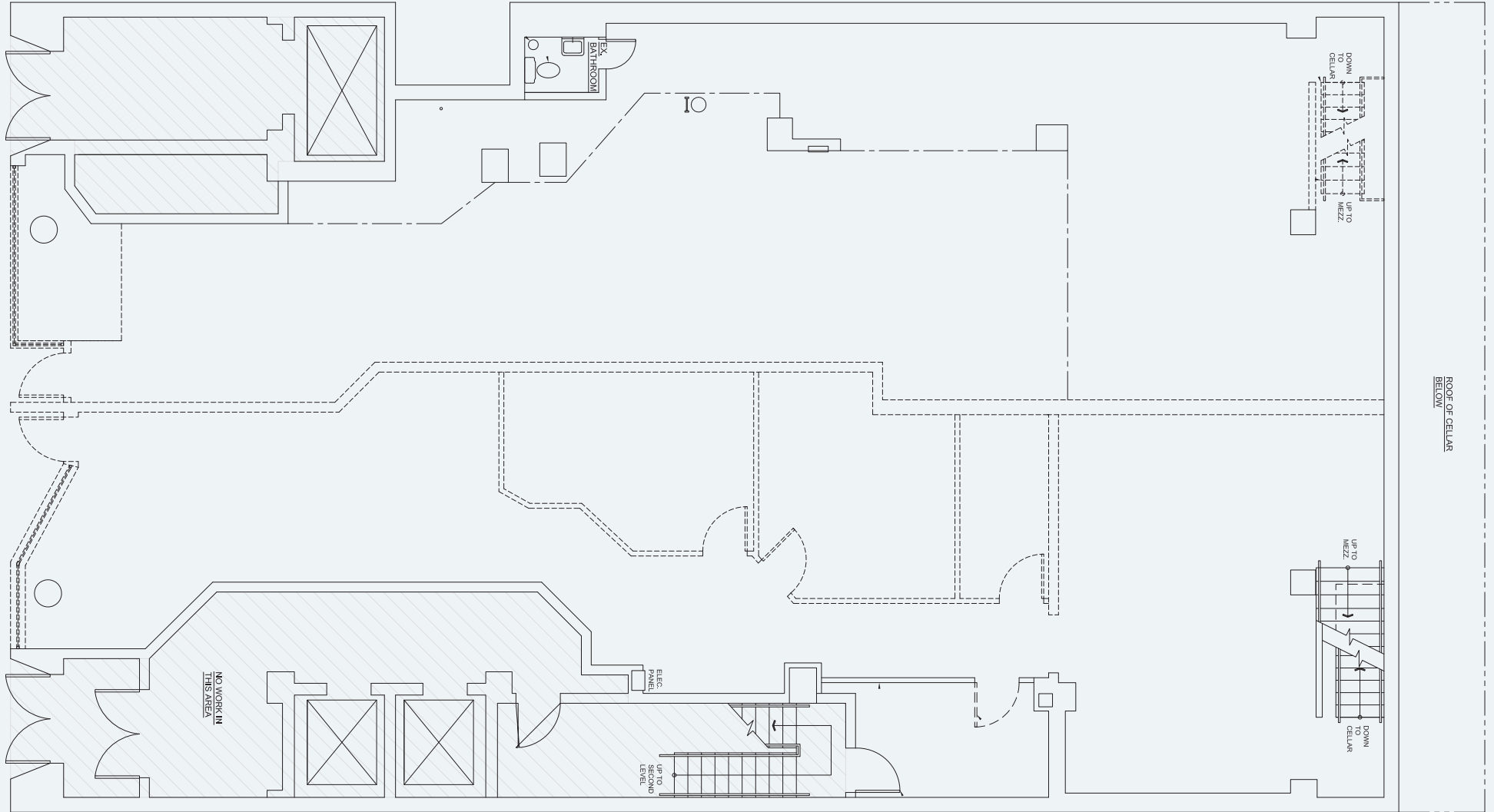
## NOTES

- Previously Bead World
- Well maintained
- Gas in place
- Cannabis and Cabaret uses are prohibited
- Grand Entrance with minimal columns
- 2 existing HVAC units
- Can be Vented
- Dense hotel neighborhood
- Logical divisions will be considered



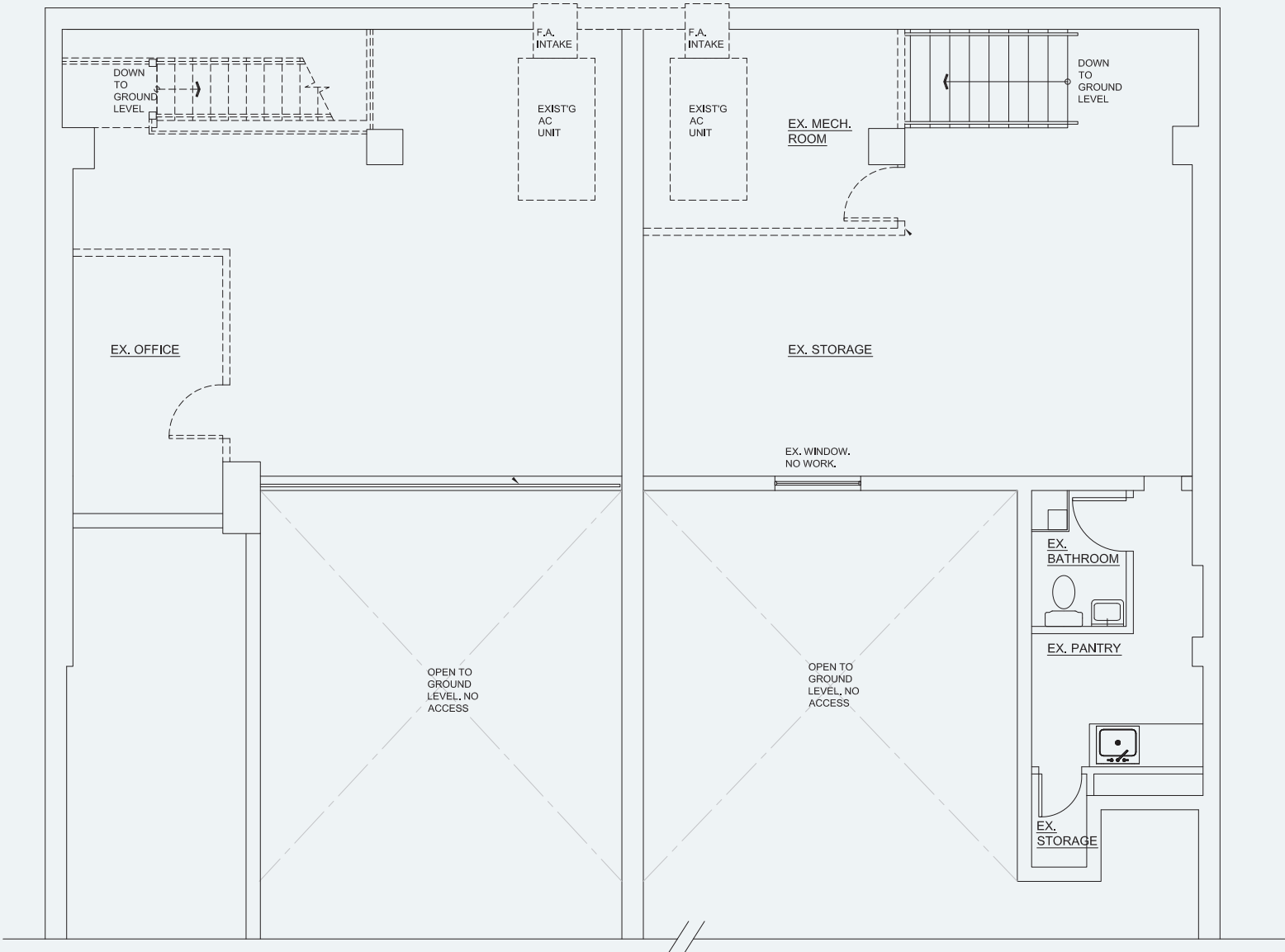
# 57 WEST 38<sup>TH</sup> ST

## GROUND FLOOR

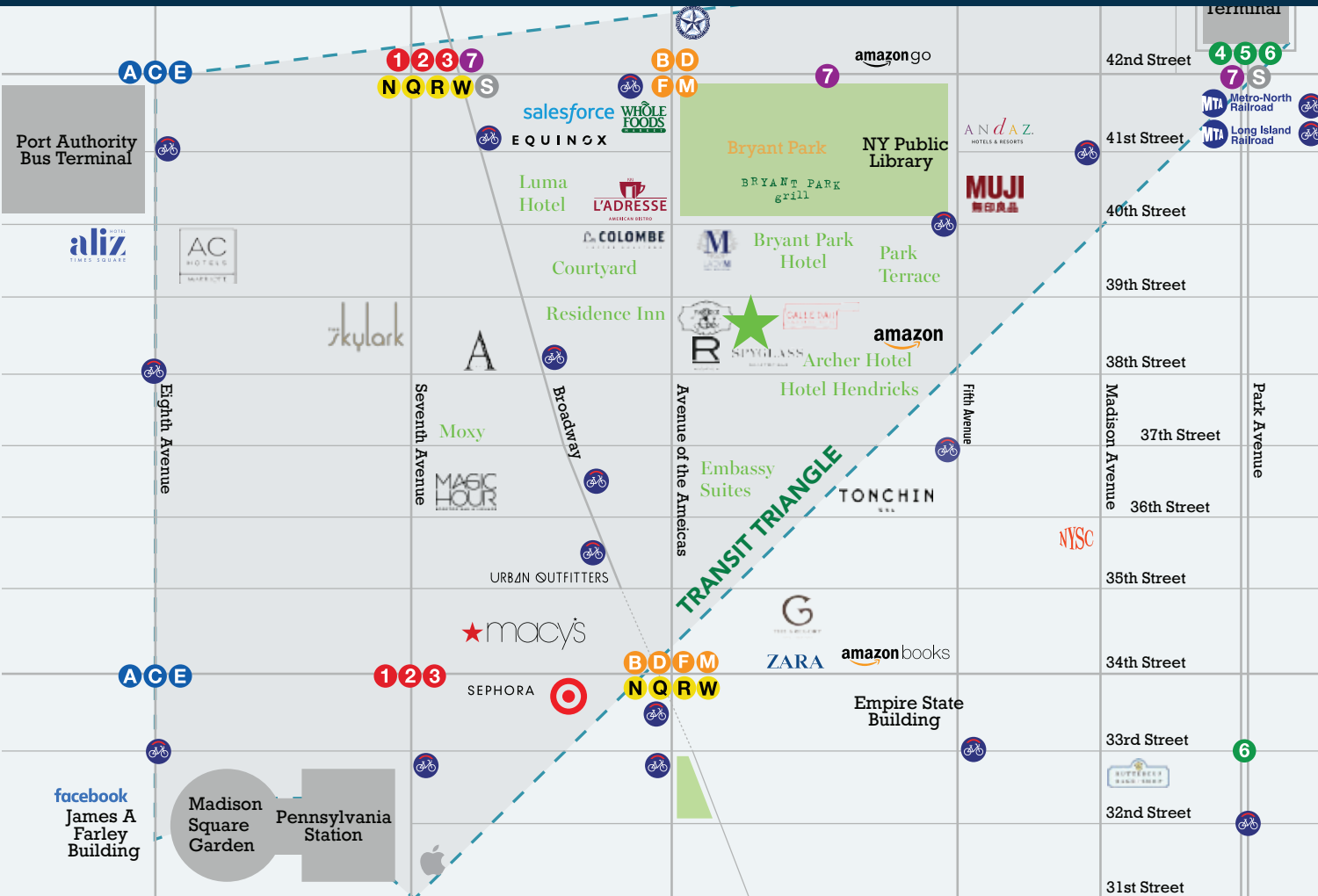


# 57 WEST 38<sup>TH</sup> ST

## MEZZANINE




# 57 WEST 38<sup>TH</sup> ST




.25 MILE RADIUS

AVERAGE HH INCOME

 **\$242,525**

AGES 25-44 YEARS OLD

 **57%**

POPULATION

 **4,639**

△ Center of the Transit Triangle

△ Nearby Transportation:

**4 5 6 F M N R W 7 S**

 Long Island Rail Road  Metro-North Railroad 





**OLIVIA HWANG**

Senior Managing Director  
212.776.1238

ohwang@lee-associates.com

**BRAD SCHWARZ**

Executive Managing Director & Principal  
212.776.1290

bschwarz@lee-associates.com

**ZEV SONKIN**

Director  
212.776.1289

zsonkin@lee-associates.com

