

Park Central Business Park

3665 Park Central Boulevard
Pompano Beach, FL 33064



Contact Us

Tom O'Loughlin

Vice Chairman
+1 954 817 3919

tom.oloughlin@cbre.com

Larry Genet

Executive Vice President
+1 305 807 0004

larry.genet@cbre.com

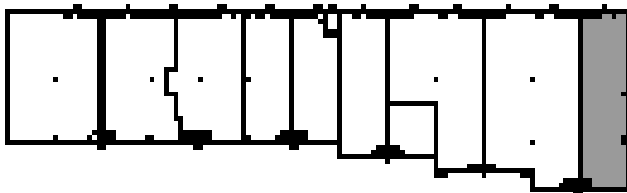
Michael Oretsky

Vice President
+1 954 798 4284

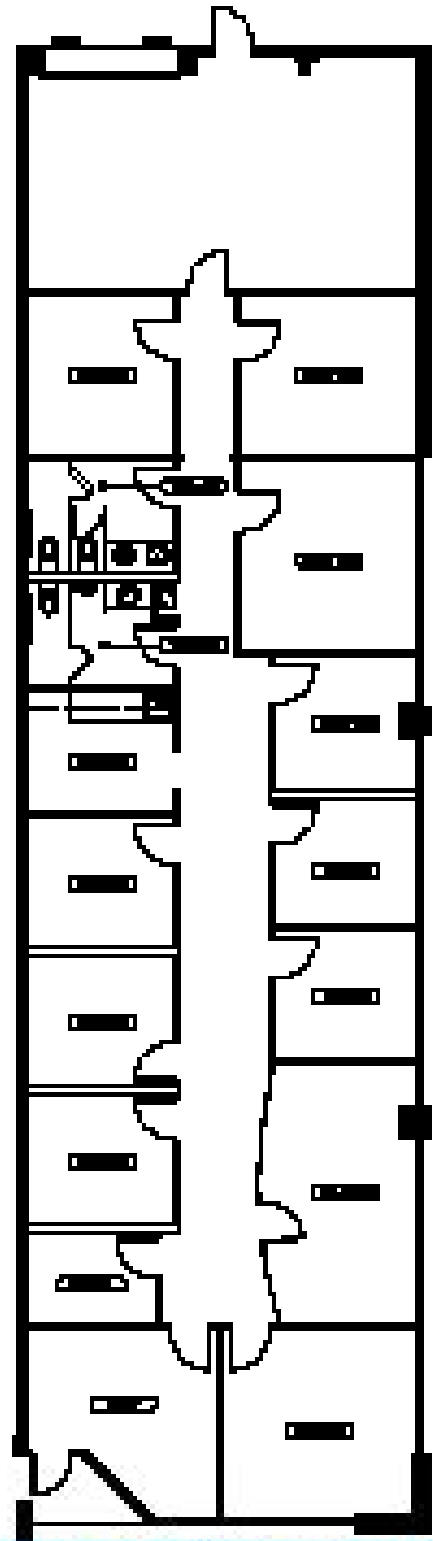
michael.oretzky@cbre.com

Property Features

- + ±3,429 SF available
- + ±2,741 SF office (ability to demo office to spec)
- + ±688 SF warehouse
- + 1 roll-up door
- + Up to 16' clear height
- + ±1.5 : 1,000 parking ratio
- + **Available Q4 2025**



FLOOR PLAN



© 2025 CBRE, Inc. All rights reserved. This information has been obtained from sources believed reliable, but has not been verified for accuracy or completeness. You should conduct a careful, independent investigation of the property and verify all information. Any reliance on this information is solely at your own risk. CBRE and the CBRE logo are service marks of CBRE, Inc. All other marks displayed on this document are the property of their respective owners, and the use of such logos does not imply any affiliation with or endorsement of CBRE. Photos herein are the property of their respective owners. Use of these images without the express written consent of the owner is prohibited.