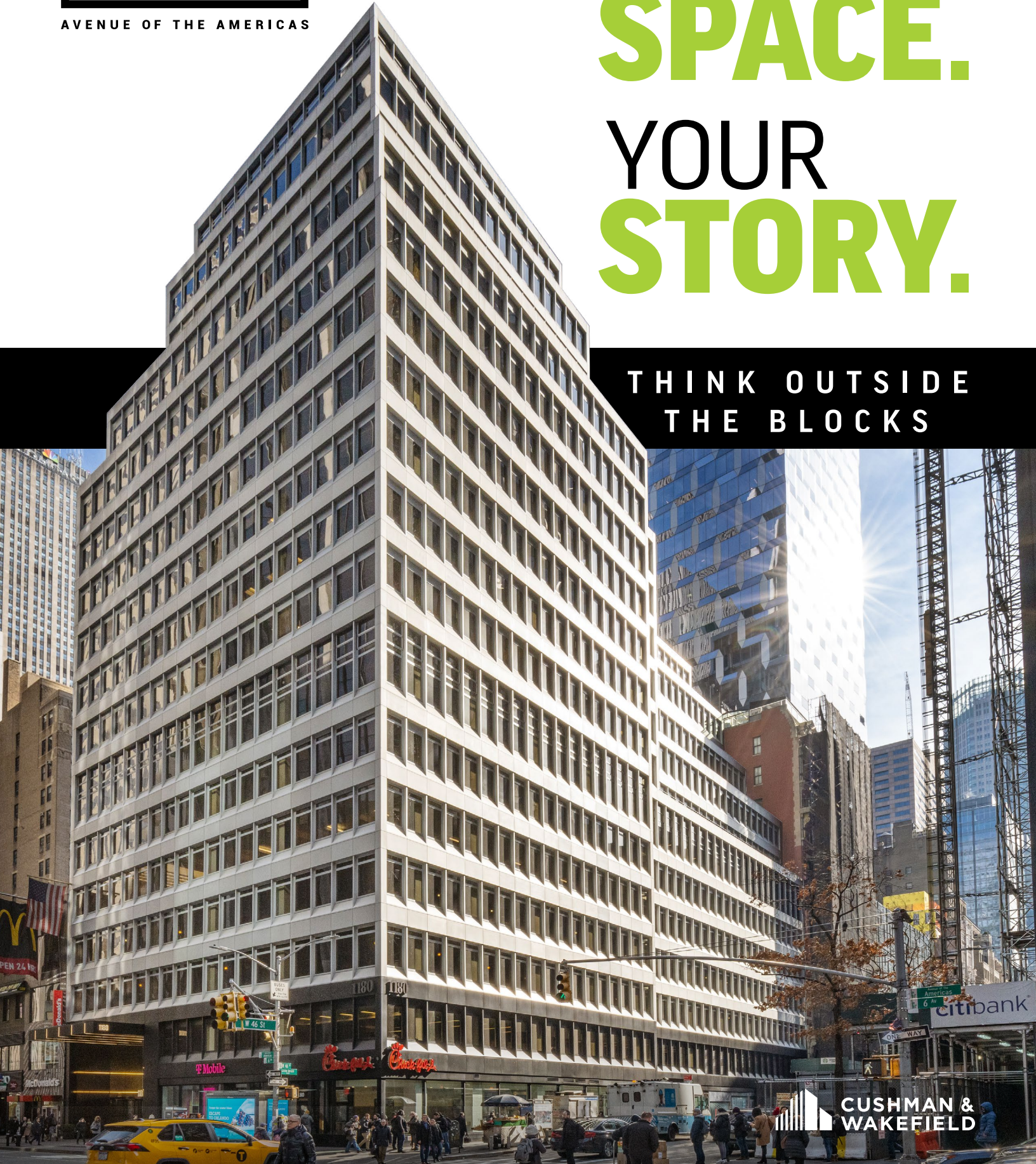


1180

AVENUE OF THE AMERICAS

# YOUR SPACE. YOUR STORY.

THINK OUTSIDE  
THE BLOCKS

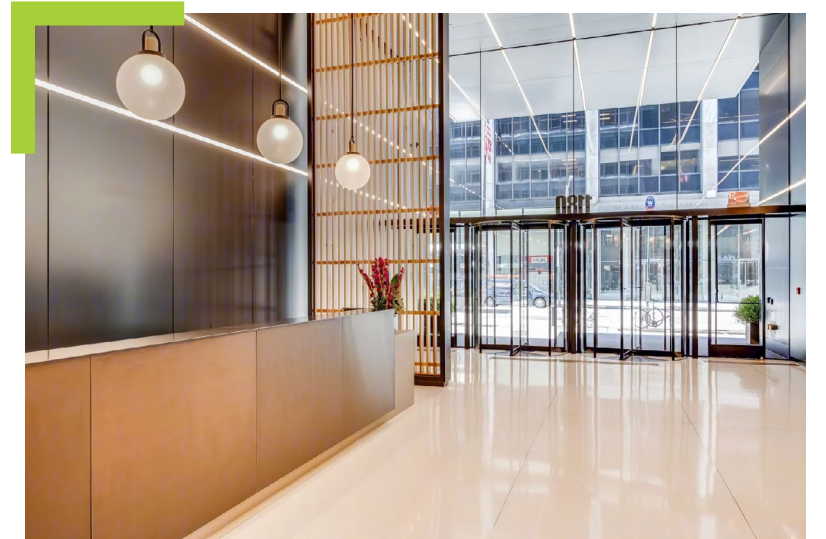


**CUSHMAN & WAKEFIELD**



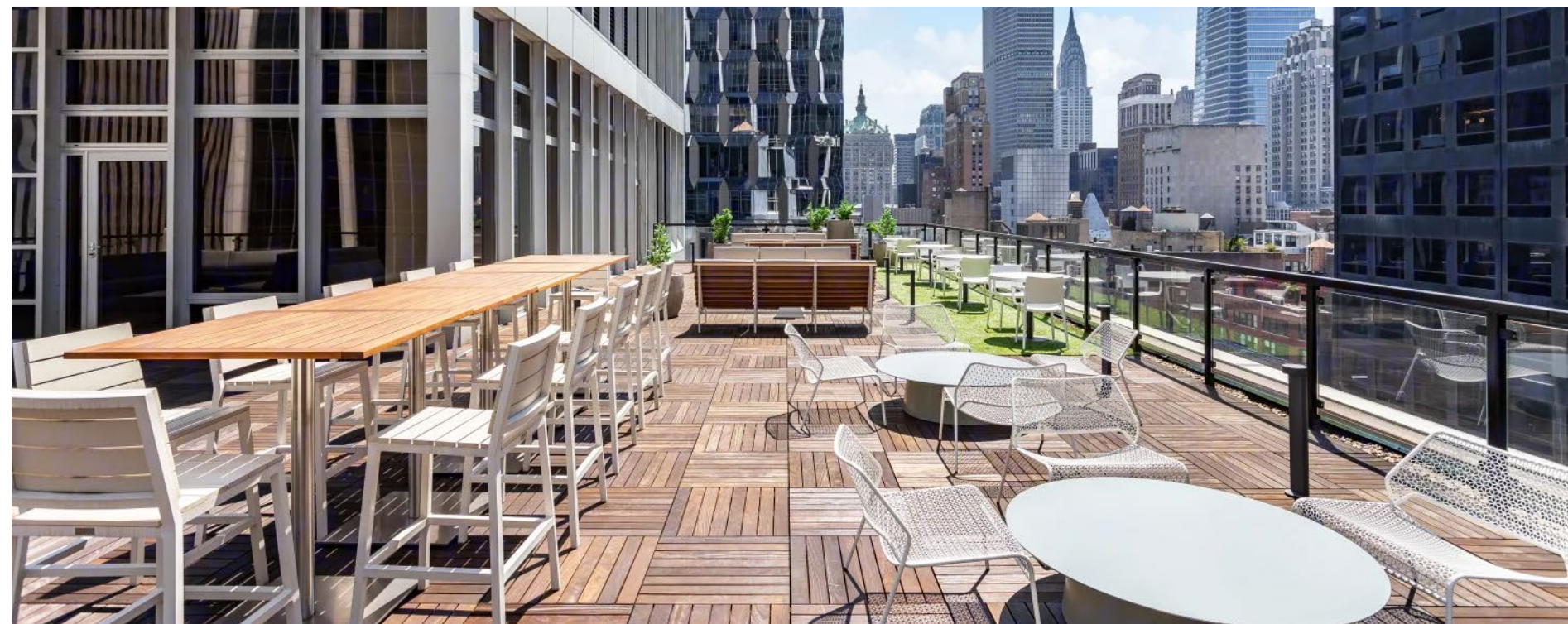
# DEFINE YOUR FIRST IMPRESSION

Allow the lobby, newly redesigned by Gensler, to make all your first impressions. Built for today's workplace, this modern and elegant entry hits all the right notes.

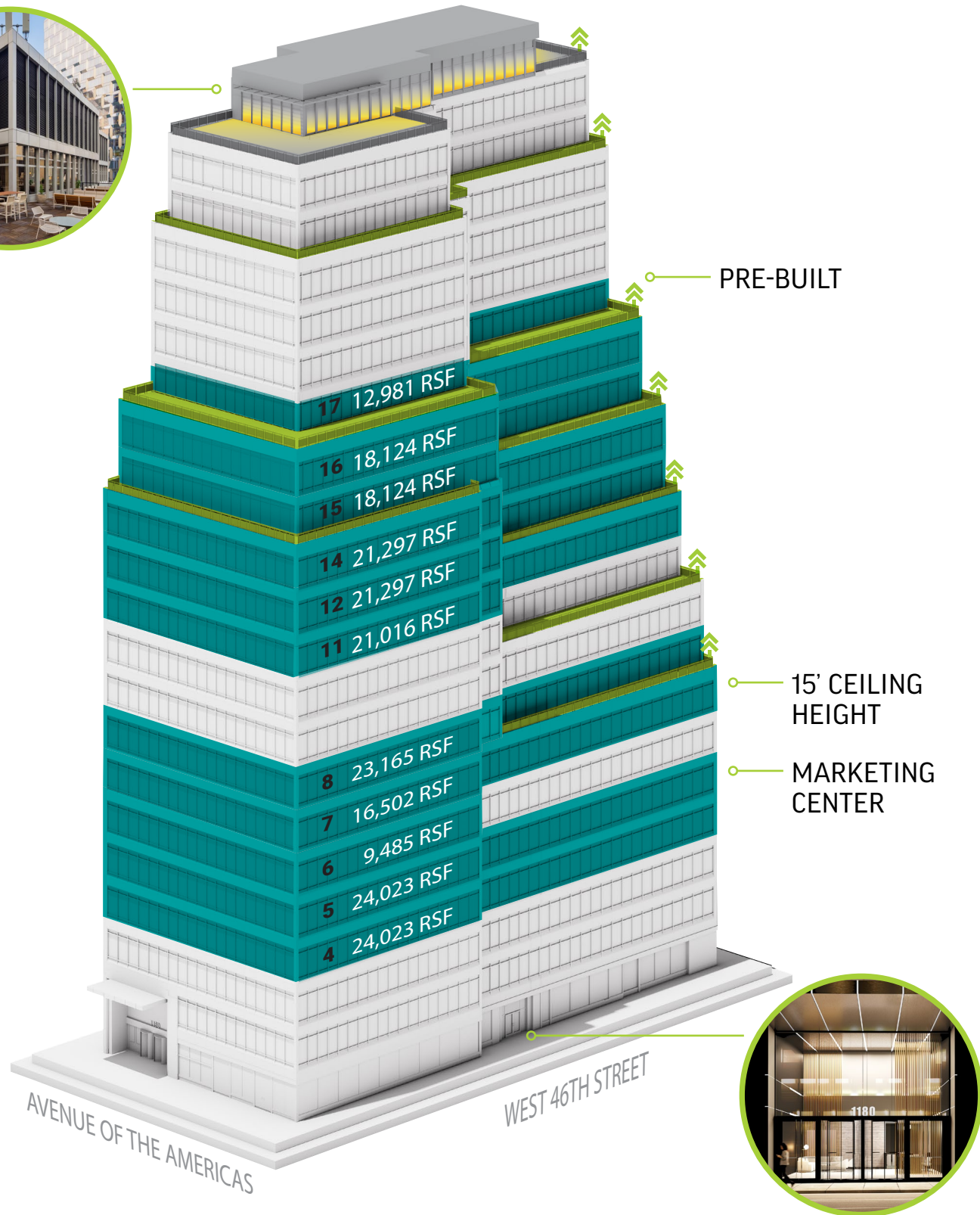


## AIR. LIGHT. INSPIRATION.

Outside is the new in. Increased productivity, infinite focus, and inspired creative thinking await on the terraces of 1180. With over 10,000 SF of outdoor space and private terraces across 7 floors, the fresh ideas will be flowing.



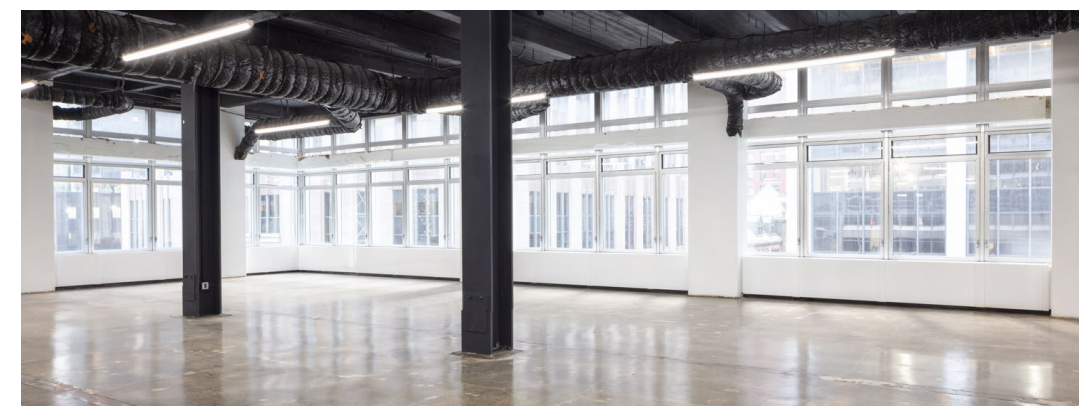
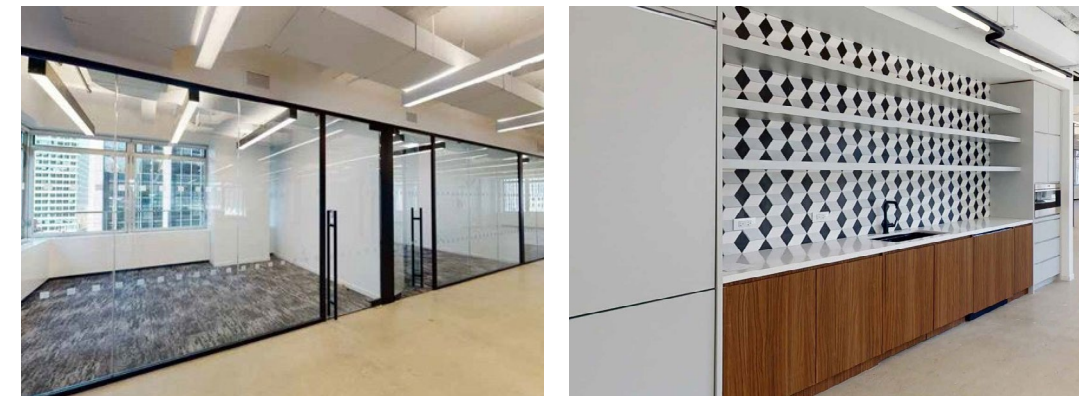
# STACKED WITH POSSIBILITY



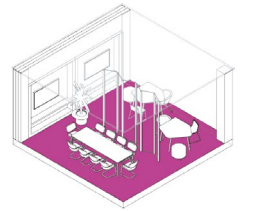
# CREATE YOUR SPACE



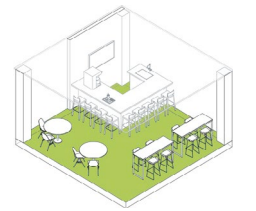
**12,000 SF PRE-BUILT SPACES AT THE READY**



Innovation Lab



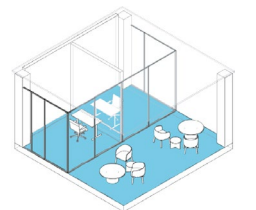
Meeting Pod



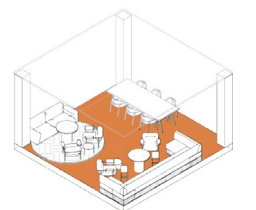
Service Area



Work Studio



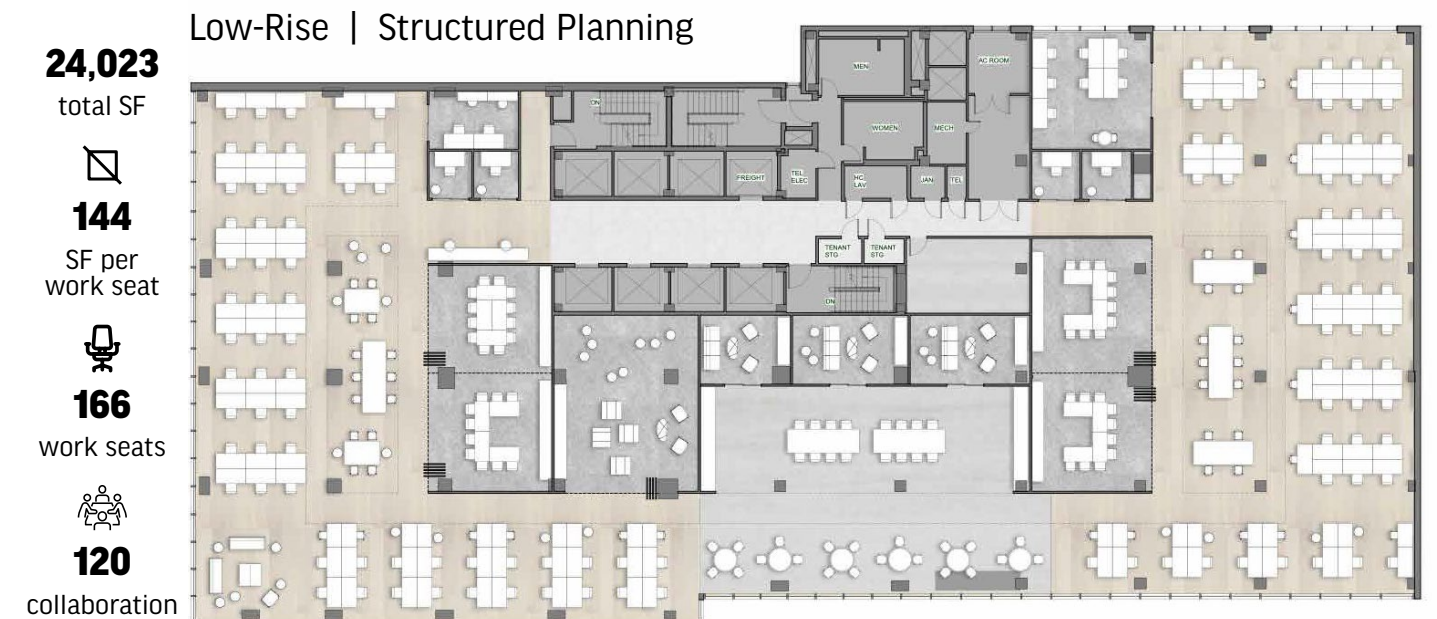
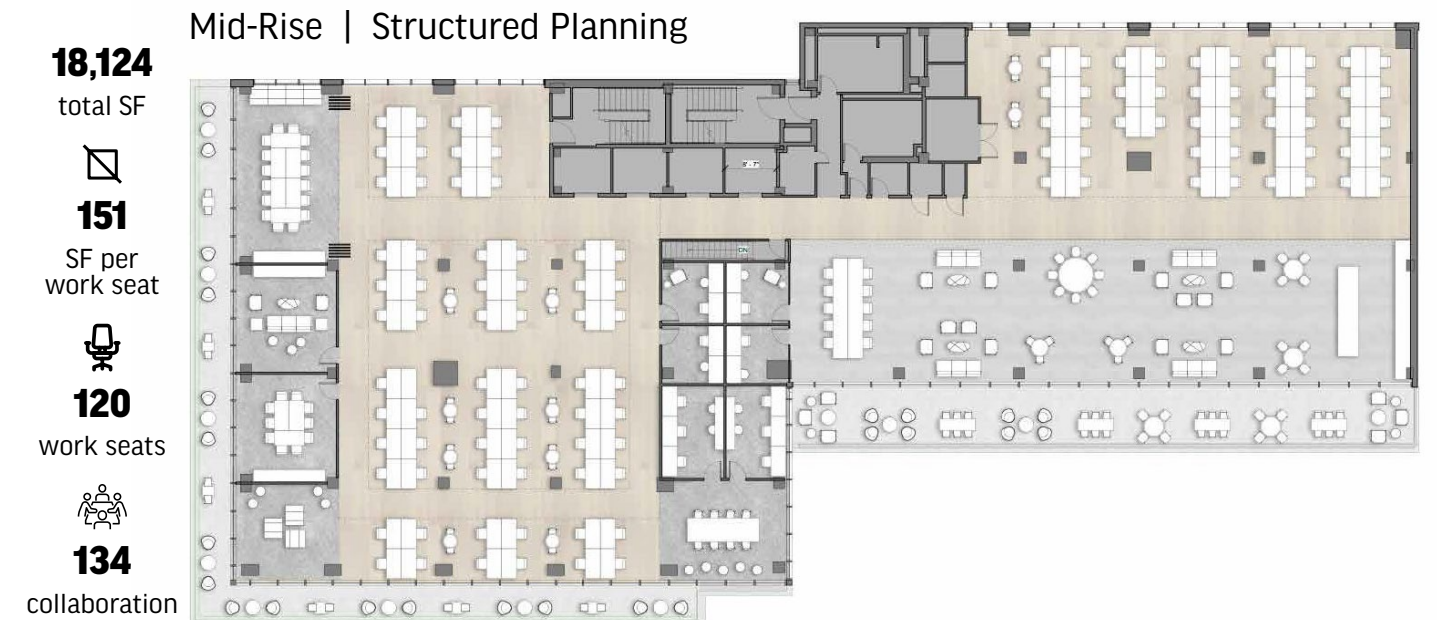
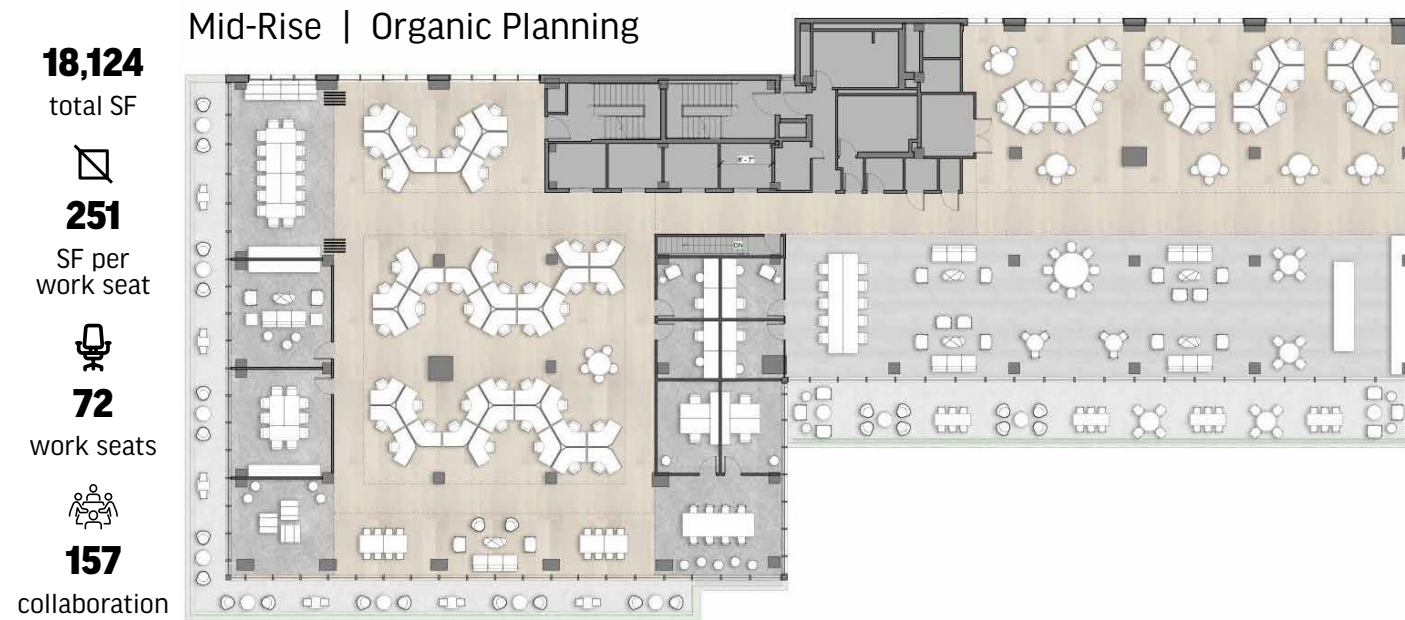
Office Box

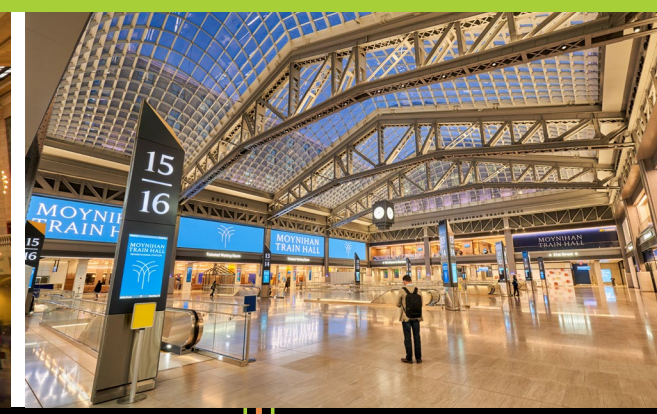
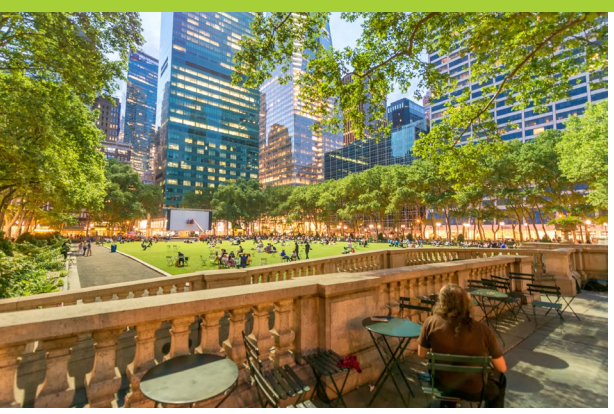


Living Room

# MAP OUT YOUR VISION

## TYPICAL FLOORPLANS





# PREMIER ACCESS



## SINGLE MODE OF TRANSPORTATION

**GRAND CENTRAL** METRO NORTH

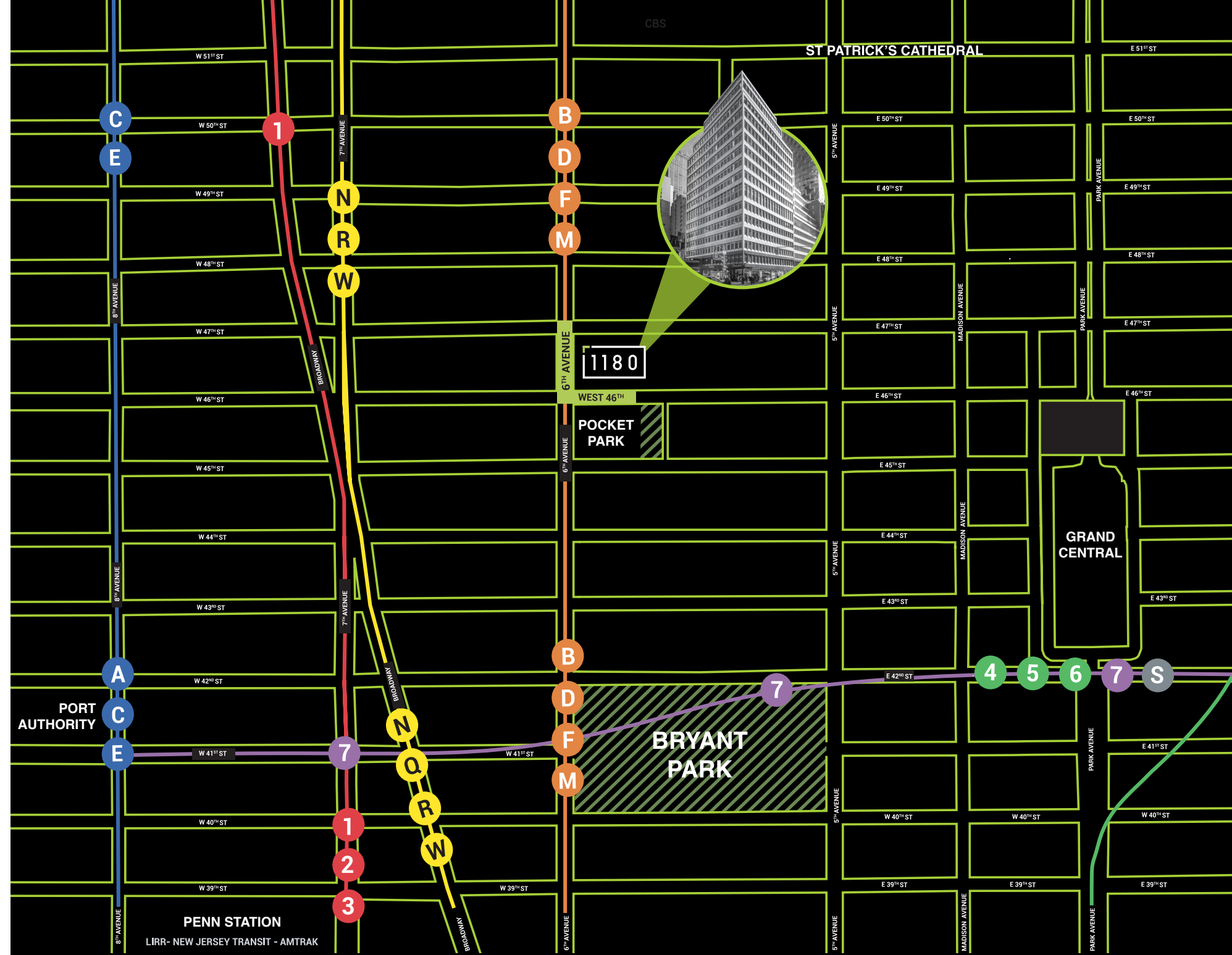
5 minute walk

**PENN STATION** LIRR, AMTRAK & NJ TRANSIT

15 minute walk

**PORT AUTHORITY** BUS TERMINAL

10 minute walk





# 1180

AVENUE OF THE AMERICAS

**BRYAN BOISI**

+1 212 318 9756

[bryan.boisi@cushwake.com](mailto:bryan.boisi@cushwake.com)

**MICHAEL BARALDI**

+1 212 841 7626

[michael.baraldi@cushwake.com](mailto:michael.baraldi@cushwake.com)

**CAROLINE COLLINS**

+1 212 318 9745

[caroline.collins@cushwake.com](mailto:caroline.collins@cushwake.com)

**JORDY ELARDO**

+1 212 589 5148

[jordy.elardo@cushwake.com](mailto:jordy.elardo@cushwake.com)



©2025 Cushman & Wakefield. All rights reserved. The information contained in this communication is strictly confidential. This information has been obtained from sources believed to be reliable but has not been verified. NO WARRANTY OR REPRESENTATION, EXPRESS OR IMPLIED, IS MADE AS TO THE CONDITION OF THE PROPERTY (OR PROPERTIES) REFERENCED HEREIN OR AS TO THE ACCURACY OR COMPLETENESS OF THE INFORMATION CONTAINED HEREIN, AND SAME IS SUBMITTED SUBJECT TO ERRORS, OMISSIONS, CHANGE OF PRICE, RENTAL OR OTHER CONDITIONS, WITHDRAWAL WITHOUT NOTICE, AND TO ANY SPECIAL LISTING CONDITIONS IMPOSED BY THE PROPERTY OWNER(S). ANY PROJECTIONS, OPINIONS OR ESTIMATES ARE SUBJECT TO UNCERTAINTY AND DO NOT SIGNIFY CURRENT OR FUTURE PROPERTY PERFORMANCE.