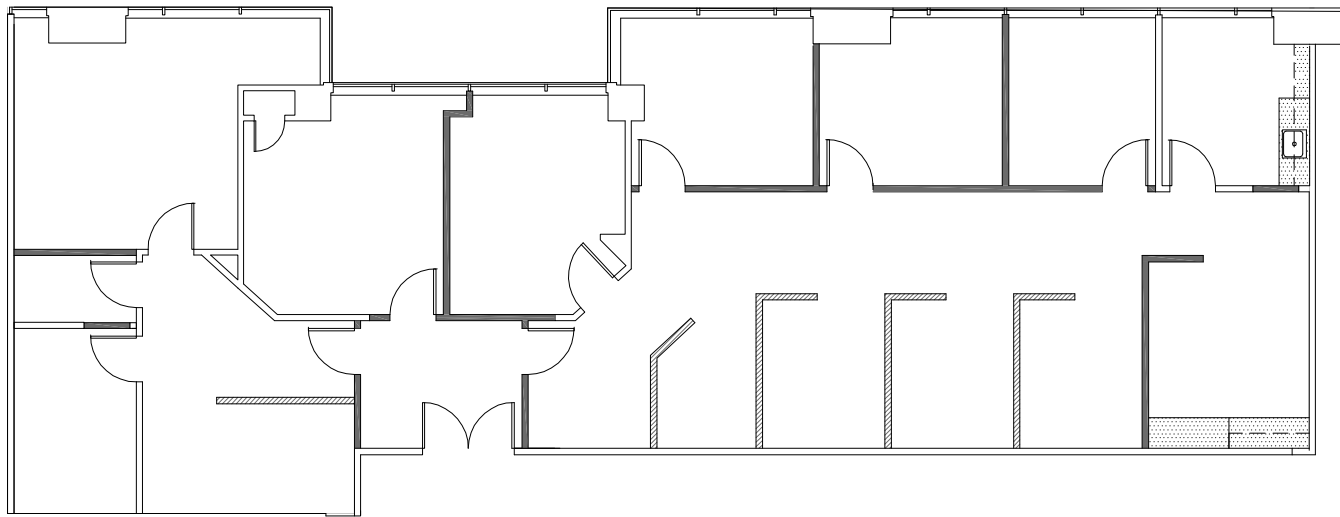
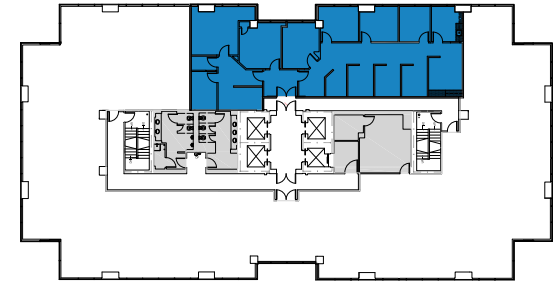


TOWER PLACE

1511 N. Westshore Boulevard | Tampa

Suite 1050 | 3,261 SF



Disclaimer: The above floor plan is not to scale.
The available space shown is believed to be correct but is subject to change.

LAUREN COUP | 813-673-6006
SVP, TAMPA MARKET LEADER

BRAD HEETER | 813-673-6003
SR. LEASING REPRESENTATIVE

 Highwoods®