

FOR LEASE



Emmerling Plaza - Medical Office Suite

928 Pennsylvania 910, Cheswick, PA 15024



Location Description

Emmerling Plaza is located in close proximity to the PA Turnpike (I-76) and Route 28 at Harmar. With easy access to PA Route 910, Oakmont and Pittsburgh, this location provides a prime opportunity for retailers to attract a steady stream of clientele.

Property Highlights

- 2,845 SF Medical Office Suite For Lease
- Six (6) Exam Rooms
- Three (3) Offices
- Waiting Room
- Business Office
- Triage Area
- Three (3) ADA Restrooms
- Potential Expansion to 4,400 SF
- Move-in Condition!

Offering Summary

Lease Rate: \$22.00 SF/yr (Plus Utilities)



PRESENTED BY:

RAY THIMONS

O:412.391.3500 | C:412.638.1681

rthimons@penncom.com



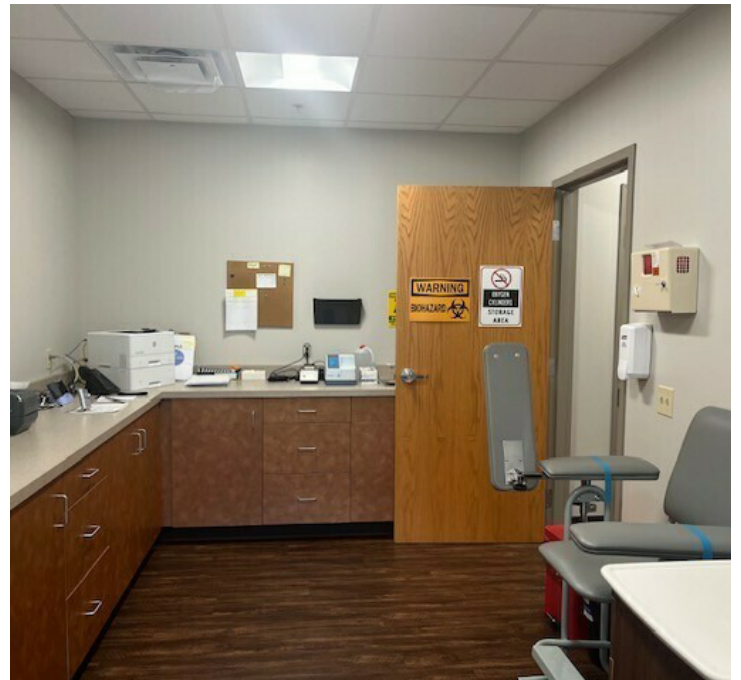
**PENNSYLVANIA
COMMERCIAL
REAL ESTATE INC.**

FOR LEASE



Emmerling Plaza - Medical Office Suite

928 Pennsylvania 910, Cheswick, PA 15024



PRESENTED BY:

RAY THIMONS

O:412.391.3500 | C:412.638.1681

rthimons@penncom.com



**PENNSYLVANIA
COMMERCIAL
REAL ESTATE INC.**

910 SHERATON DRIVE, SUITE 340, MARS, PA 16046 // 412.391.3500

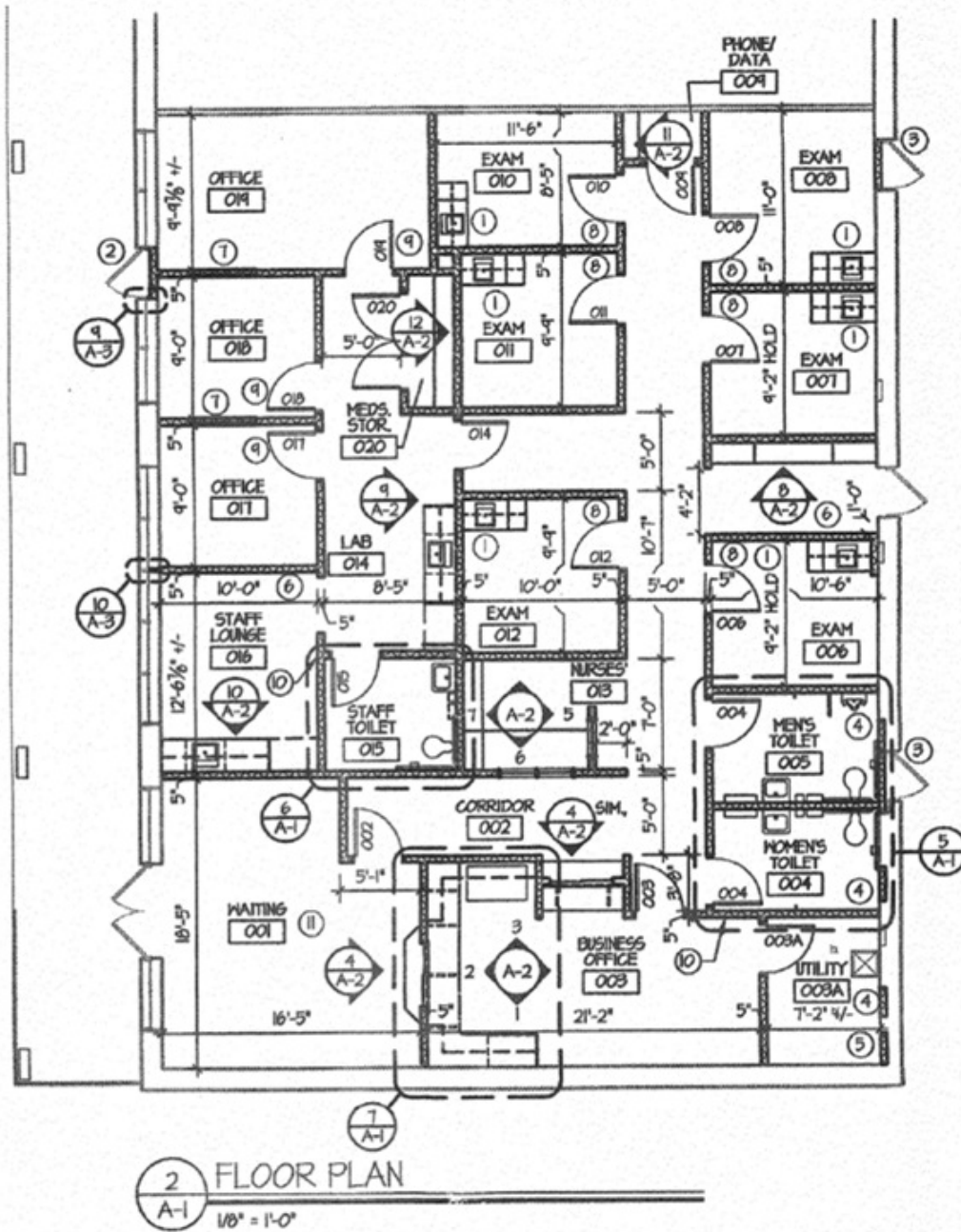
PENNCOM.COM

FOR LEASE



Emmerling Plaza - Medical Office Suite

928 Pennsylvania 910, Cheswick, PA 15024



PRESENTED BY:

RAY THIMONS
O:412.391.3500 | C:412.638.1681
rthimons@penncom.com



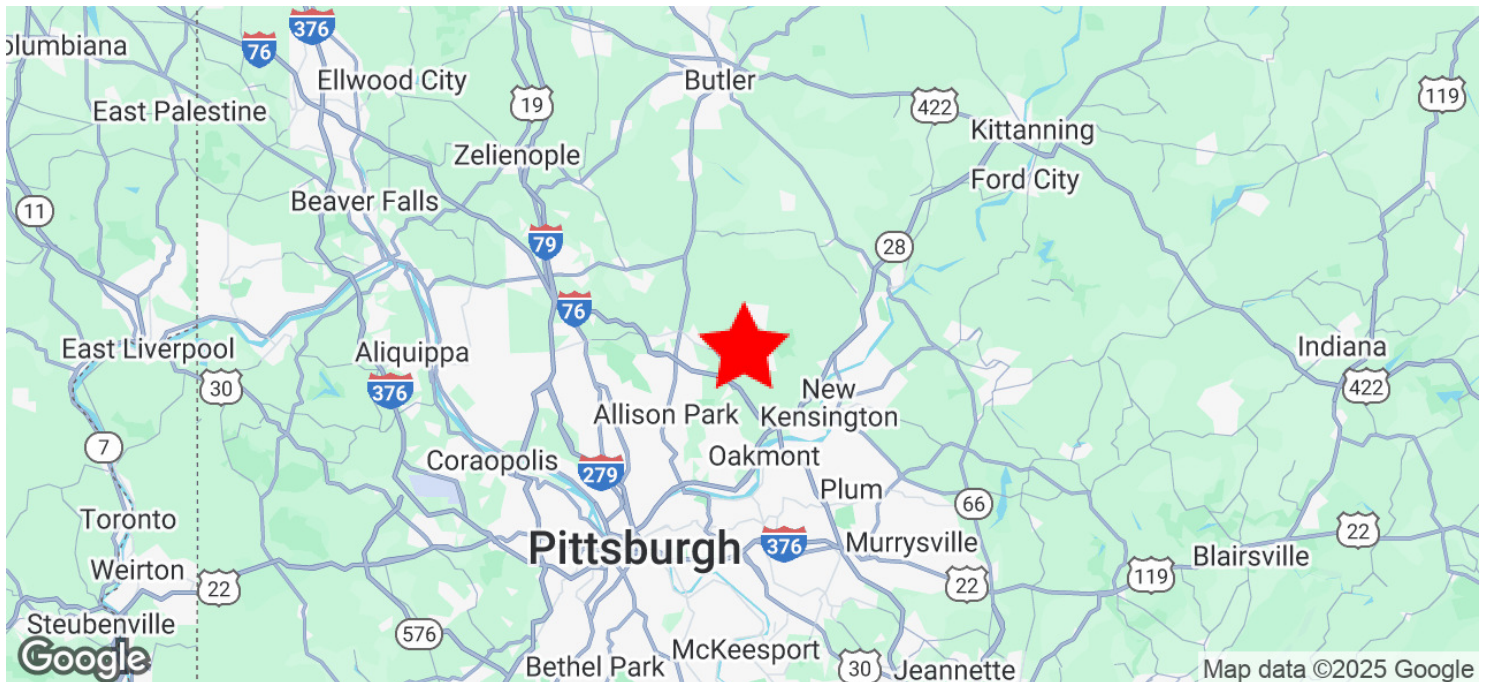
PENNSYLVANIA
COMMERCIAL
REAL ESTATE INC.

FOR LEASE



Emmerling Plaza - Medical Office Suite

928 Pennsylvania 910, Cheswick, PA 15024



PRESENTED BY:

RAY THIMONS
O:412.391.3500 | C:412.638.1681
rthimons@penncom.com



**PENNSYLVANIA
COMMERCIAL
REAL ESTATE INC.**