

# AVAILABLE FOR SUBLEASE

2349 INDUSTRIAL PKWY WEST | SAN LEANDRO, CA



COMMERCIAL REAL ESTATE SERVICES

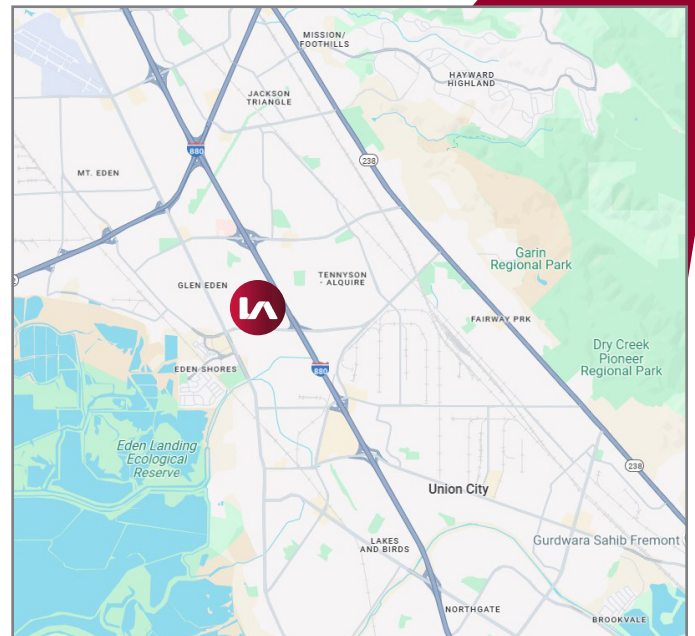


## LISTING DATA:

- 21,792± SF Industrial Building
- 2,292± SF Office
- 2 Dock High Doors
- 2 Roll Up Doors
- 20' Clear Height
- 600 Amps (Please Verify)

## ECONOMIC DATA:

- Sublease Rate: \$1.04/SF, NNN
- LED: 6/30/2027
- Available: 6/1/2025



## EXCLUSIVE AGENT:

Nathan Vance, Principal

E \\ nvance@lee-associates.com

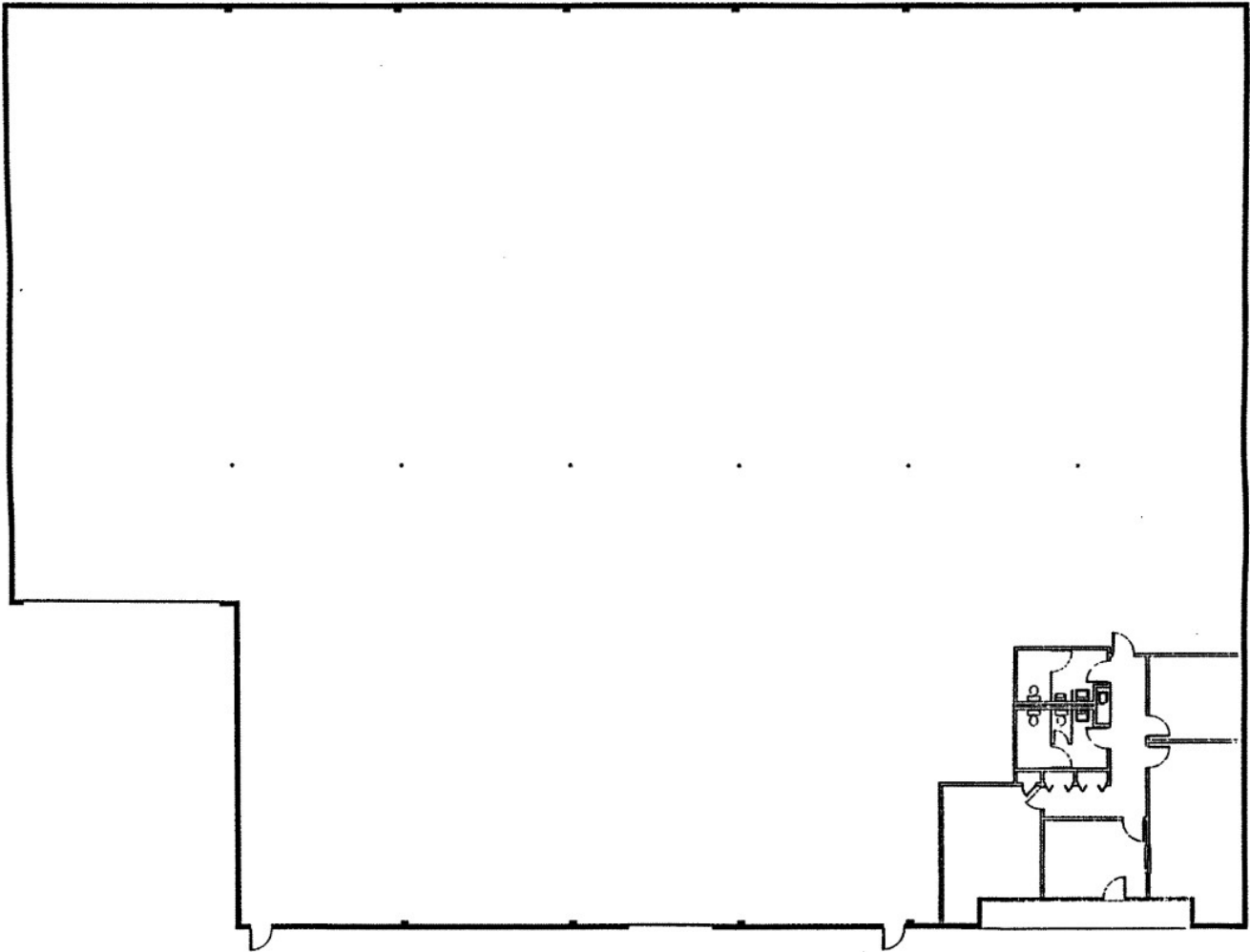
P \\ 510.907.3021 | LIC# 02039163

Lee & Associates Oakland Commercial Real Estate \ 555 12th Street, Suite 1725, Oakland, CA 94607 \ [www.lee-associates.com](http://www.lee-associates.com)

All information furnished regarding property for sale, rental or financing is from sources deemed reliable, but no warranty or representation is made to the accuracy thereof and same is submitted to errors, omissions, change of price, rental or other conditions prior to sale, lease or financing or withdrawal without notice. No liability of any kind is to be imposed on the broker herein.

# AVAILABLE FOR SUBLEASE

2349 INDUSTRIAL PKWY WEST | SAN LEANDRO, CA



## EXCLUSIVE AGENT:

Nathan Vance, Principal

E \\ nvance@lee-associates.com

P \\ 510.907.3021 | LIC# 02039163