



Retail Space For Sub-Lease

1400 Van Ness Avenue

SAN FRANCISCO, CA 94109

Former Peets Coffee space with great signage available.

Get in touch

David Bell
Junior Vice President
415.307.8056
david.bell@compass.com
CalDRE #01862467

Gary Barboro
Senior Vice President
415.867.6512
gary.barboro@compass.com
CalDRE #01125826

COMPASS
COMMERCIAL

Executive Summary



Offering Summary

Lease Rate:	Negotiable
Sub-Lease Term Expiration:	11/30/27
Suite Size:	1,208 SF
Year Built:	1913
Year Renovated:	2007
Zoning:	RC4

Property Overview

Prime Van Ness retail corner for sub-lease

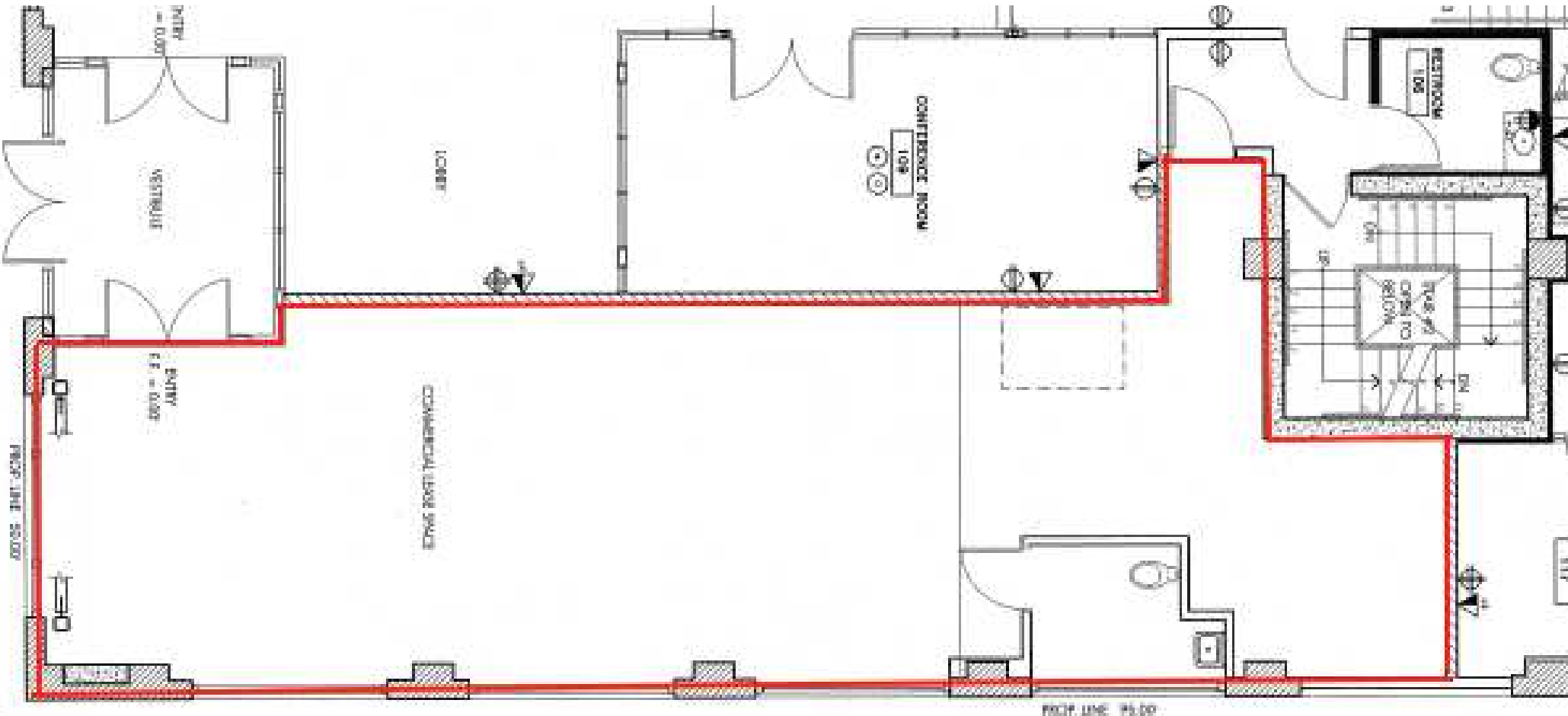
Highlights

- Former Peets space with all buildout in place
- Turnkey
- Great public transit access.

David Bell
 Junior Vice President
 415.307.8056
 david.bell@compass.com
 CalDRE #01862467

Gary Barboro
 Senior Vice President
 415.867.6512
 gary.barboro@compass.com
 CalDRE #01125826

Floor Plan



David Bell
Junior Vice President
415.307.8056
david.bell@compass.com
CalDRE #01862467

Gary Barboro
Senior Vice President
415.867.6512
gary.barboro@compass.com
CalDRE #01125826

Location Map



Map data ©2024 Google

David Bell
 Junior Vice President
 415.307.8056
 david.bell@compass.com
 CalDRE #01862467

Gary Barboro
 Senior Vice President
 415.867.6512
 gary.barboro@compass.com
 CalDRE #01125826

Compass is a real estate broker licensed by the State of California and abides by Equal Housing Opportunity laws. License Number 01991628, 01527235, 1527365. All material presented herein is intended for informational purposes only and is compiled from sources deemed reliable but has not been verified. Changes in price, condition, sale or withdrawal may be made without notice. No statement is made as to the accuracy of any description. All measurements and square footage are approximate.

Additional Photos



David Bell
Junior Vice President
415.307.8056
david.bell@compass.com
CalDRE #01862467

Gary Barboro
Senior Vice President
415.867.6512
gary.barboro@compass.com
CalDRE #01125826