

ALL PROPERTIES ARE OWNER MANAGED AND
STRATEGICALLY LOCATED MINUTES FROM A MAJOR INTERSTATE
IN THE EAST BAY AND CENTRAL VALLEY.

Right Space. Best Place.

www.cranbrookgroup.com

AIRPORT CORPORATE CENTRE

[7677 Oakport Street, Oakland, CA 94621](#)



SEE & LEARN MORE ...

Go to cranbrookgroup.com to view more photos and get more information about Airport Corporate Centre and Team Cranbrook!

Easily recognizable from Interstate 880 and standing tall against the Oakland skyline, Airport Corporate Centre is an impressive 12-story, Class A office building offering an abundance of natural light.

As an owner/operator, we are proud to offer Class A office space that's as efficient as it is beautiful ... and a great place for your employees and guests.

With an unparalleled and coveted location situated adjacent to I-880, Airport Corporate Centre provides panoramic views of San Francisco, the Oakland Hills and the Oakland Arena/Coliseum. The property offers exceptional visibility, a broad array of amenities and space solutions making Airport Corporate Centre the "Right Space. Best Place." for your business needs.

PROPERTY HIGHLIGHTS & AMENITIES

- Prominent Class A 12-Story High Rise with ± 264,000 RSF
- Flexible ± 22,500 RSF Floor Plates
- On-site Property Management & Chief Engineer
- 24/7 On-site Security & Surveillance
- Ample Surface Level Secured Parking
- On-site Café and Fitness Center
- Executive Conference Room with Recently Upgraded Projector and Video Presentation Capabilities
- Free BART Shuttle Service
- Close Proximity to Oakland International Airport (OAK)
- Conveniently Located near Retail, Restaurants and Banks

SUSTAINABILITY FEATURES

- ENERGY STAR® Certified
- New Solar Carport Structures
- New EV Charging Stations (36 total)
- Energy Efficient Cooling Tower
- Recycling & Compost Programs

For more information, please contact:

Chris Wight

Director of Leasing & Brokerage

O: (209) 549-4960 x 117 | C: (209) 495-1383

cwight@cranbrookgroup.com

DRE #00935049

The information contained herein is based on reliable data, measurements and calculations. We have no reason to doubt its accuracy, but we do not guarantee it. All information should be verified prior to purchase or lease.



AIRPORT CORPORATE CENTRE

[7677 Oakport Street, Oakland, CA 94621](https://www.cranbrookgroup.com/properties/airport-corporate-centre)



Suite	RSF
1st Floor - Suite 105	± 2,416 RSF
2nd Floor - Suite 230	± 1,634 RSF
5th Floor - Suite 500	± 4,137 RSF
5th Floor - Suite 520	± 4,026 RSF
5th Floor - Suite 565	± 3,237 RSF
6th Floor - Suite 600	± 2,457 RSF
8th Floor - Suite 870	± 2,714 RSF
10th Floor - Suite 1005	± 2,180 RSF
11th Floor - Suite 1140	± 4,138 RSF
11th Floor - Suite 1150	± 4,494 RSF
11th Floor - Suite 1160	± 2,568 RSF
11th Floor (Contiguous Suites) - Suites 1140 + 1150	± 8,632 RSF
11th Floor (Contiguous Suites) - Suites 1140 + 1160	± 6,706 RSF
11th Floor (Contiguous Suites) - Suites 1140 + 1150 + 1160	± 11,200 RSF

Chris Wight

Director of Leasing & Brokerage

O: (209) 549-4960 x 117 | C: (209) 495-1383

cwight@cranbrookgroup.com | DRE #00935049



The information contained herein is based on reliable data, measurements and calculations. We have no reason to doubt its accuracy, but we do not guarantee it. All information should be verified prior to purchase or lease.

ALL PROPERTIES ARE OWNER MANAGED AND STRATEGICALLY LOCATED MINUTES FROM A MAJOR INTERSTATE IN THE EAST BAY AND CENTRAL VALLEY.

Right Space. Best Place.

www.cranbrookgroup.com

AIRPORT CORPORATE CENTRE

[7677 Oakport Street, Oakland, CA 94621](#)

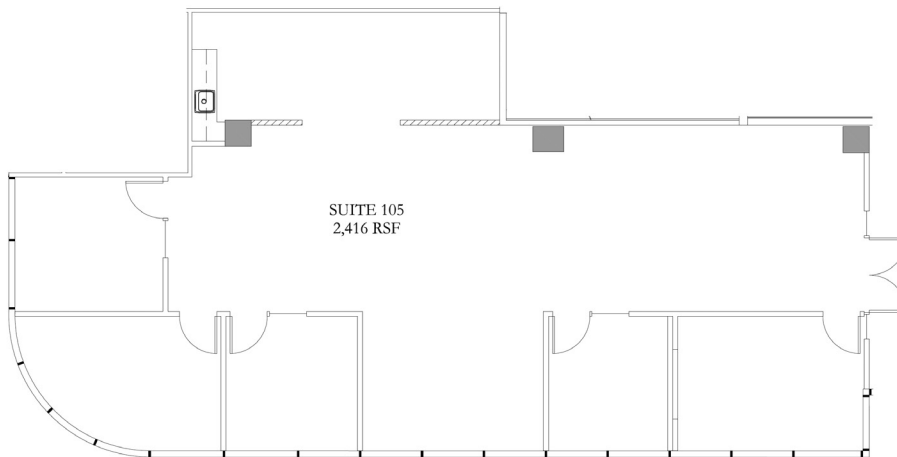


SEE & LEARN MORE ...

Go to cranbrookgroup.com to view more photos and get more information about Airport Corporate Centre and Team Cranbrook!

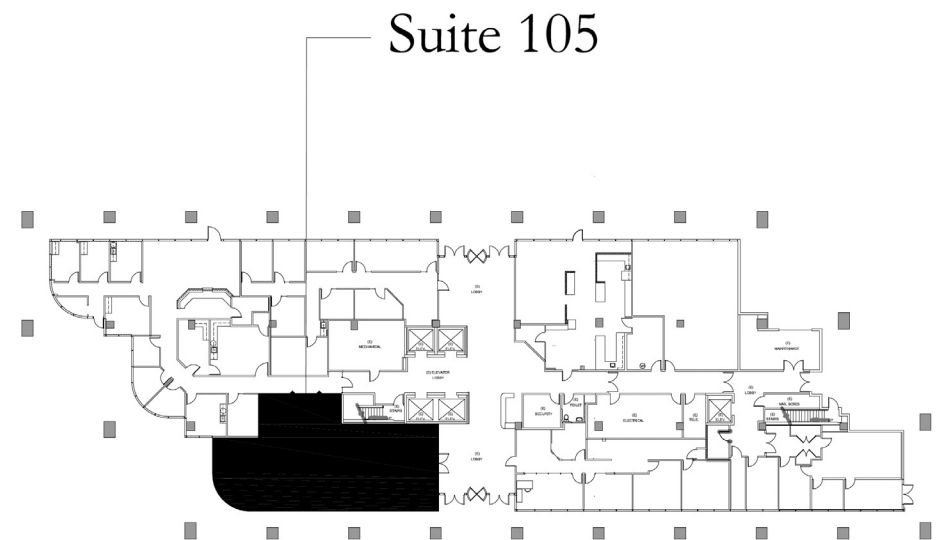
SUITE 105

± 2,416 RENTABLE SQUARE FEET



FIRST FLOOR KEY PLAN

AVAILABLE SUITE IN BLACK BELOW



For more information, please contact:

Chris Wight

Director of Leasing & Brokerage

O: (209) 549-4960 x 117 | C: (209) 495-1383

cwight@cranbrookgroup.com | DRE #00935049

The information contained herein is based on reliable data, measurements and calculations. We have no reason to doubt its accuracy, but we do not guarantee it. All information should be verified prior to purchase or lease.



ALL PROPERTIES ARE OWNER MANAGED AND STRATEGICALLY LOCATED MINUTES FROM A MAJOR INTERSTATE IN THE EAST BAY AND CENTRAL VALLEY.

Right Space. Best Place.

www.cranbrookgroup.com

AIRPORT CORPORATE CENTRE

[7677 Oakport Street, Oakland, CA 94621](#)

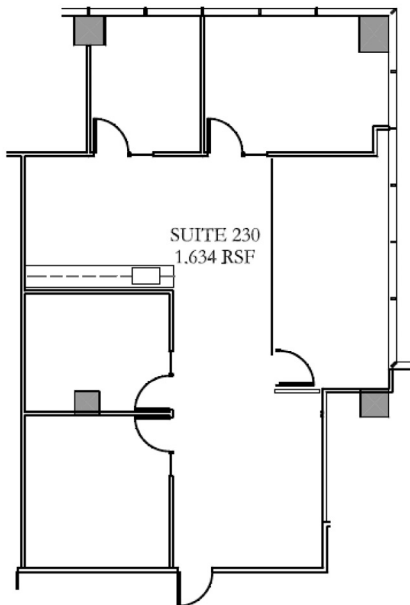


SEE & LEARN MORE ...

Go to cranbrookgroup.com to view more photos and get more information about Airport Corporate Centre and Team Cranbrook!

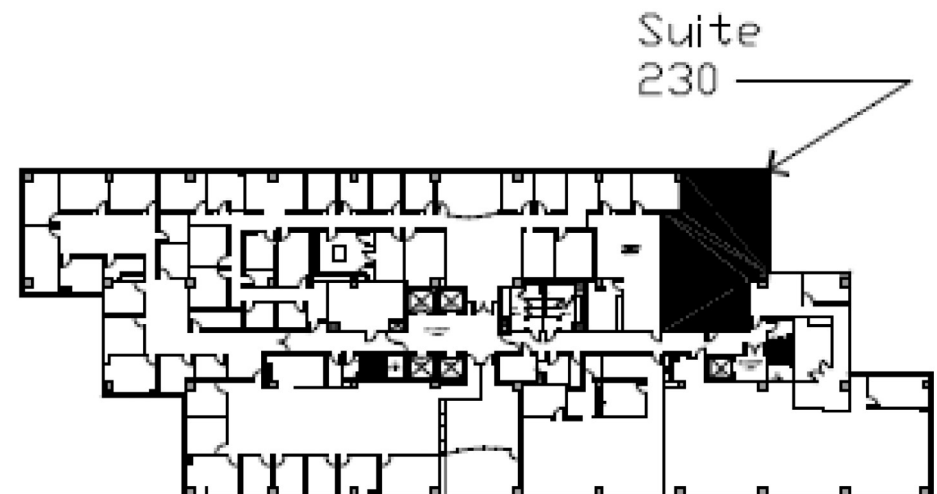
SUITE 230

± 1,634 RENTABLE SQUARE FEET



SECOND FLOOR KEY PLAN

AVAILABLE SUITE IN BLACK BELOW



For more information, please contact:

Chris Wight

Director of Leasing & Brokerage

O: (209) 549-4960 x 117 | C: (209) 495-1383

cwight@cranbrookgroup.com | DRE #00935049

The information contained herein is based on reliable data, measurements and calculations. We have no reason to doubt its accuracy, but we do not guarantee it. All information should be verified prior to purchase or lease.



ALL PROPERTIES ARE OWNER MANAGED AND STRATEGICALLY LOCATED MINUTES FROM A MAJOR INTERSTATE IN THE EAST BAY AND CENTRAL VALLEY.

Right Space. Best Place.

www.cranbrookgroup.com

AIRPORT CORPORATE CENTRE

[7677 Oakport Street, Oakland, CA 94621](#)

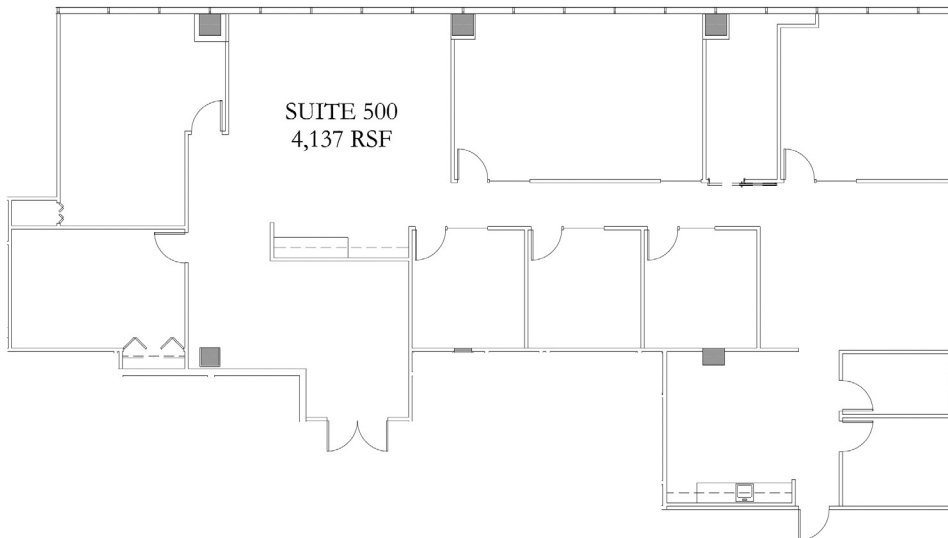


SEE & LEARN MORE ...

Go to cranbrookgroup.com to view more photos and get more information about Airport Corporate Centre and Team Cranbrook!

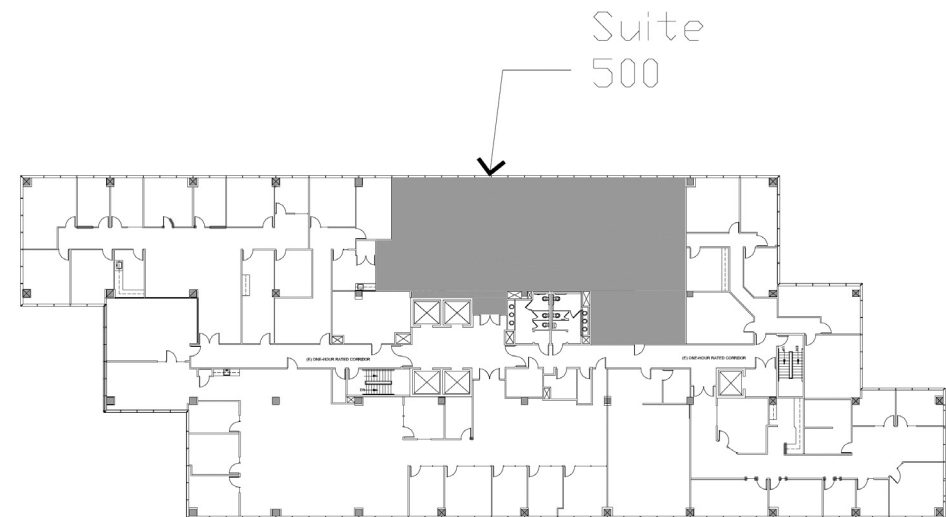
SUITE 500

± 4,137 RENTABLE SQUARE FEET



FIFTH FLOOR KEY PLAN

AVAILABLE SUITE IN GRAY BELOW



For more information, please contact:

Chris Wight

Director of Leasing & Brokerage

O: (209) 549-4960 x 117 | C: (209) 495-1383

cwight@cranbrookgroup.com | DRE #00935049

The information contained herein is based on reliable data, measurements and calculations. We have no reason to doubt its accuracy, but we do not guarantee it. All information should be verified prior to purchase or lease.



ALL PROPERTIES ARE OWNER MANAGED AND STRATEGICALLY LOCATED MINUTES FROM A MAJOR INTERSTATE IN THE EAST BAY AND CENTRAL VALLEY.

Right Space. Best Place.

www.cranbrookgroup.com

AIRPORT CORPORATE CENTRE

[7677 Oakport Street, Oakland, CA 94621](#)

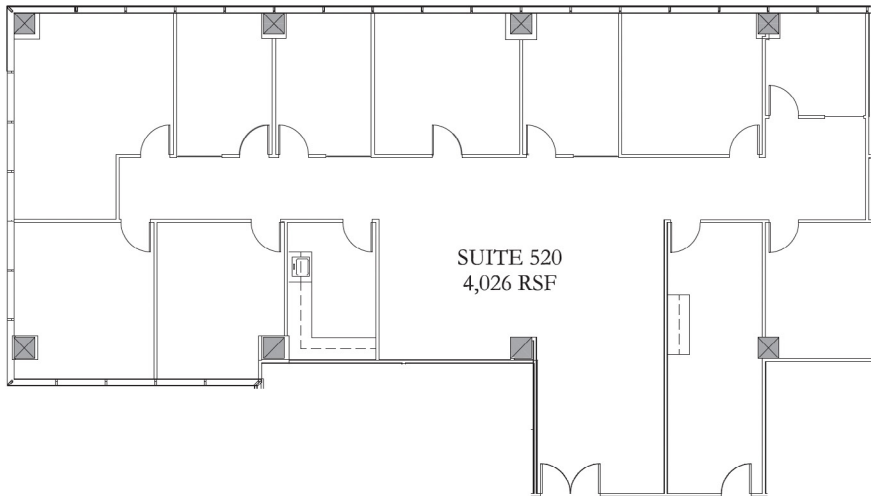


SEE & LEARN MORE ...

Go to cranbrookgroup.com to view more photos and get more information about Airport Corporate Centre and Team Cranbrook!

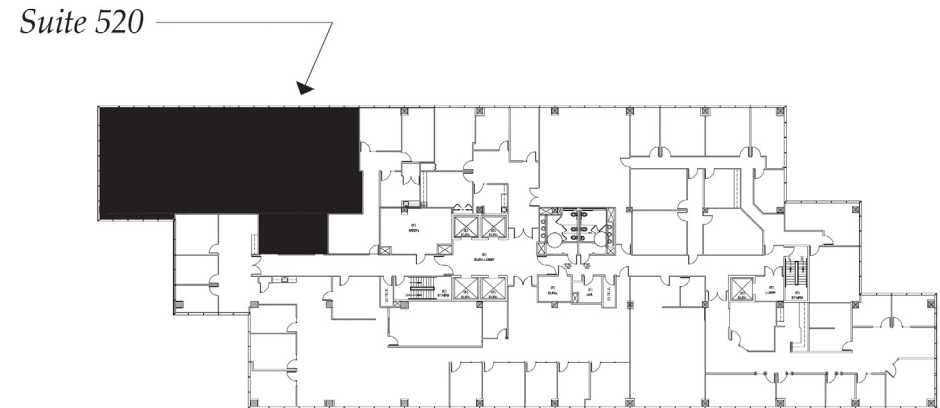
SUITE 520

± 4,026 RENTABLE SQUARE FEET



FIFTH FLOOR KEY PLAN

AVAILABLE SUITE IN BLACK BELOW



For more information, please contact:

Chris Wight

Director of Leasing & Brokerage

O: (209) 549-4960 x 117 | C: (209) 495-1383

cwight@cranbrookgroup.com | DRE #00935049

The information contained herein is based on reliable data, measurements and calculations. We have no reason to doubt its accuracy, but we do not guarantee it. All information should be verified prior to purchase or lease.



ALL PROPERTIES ARE OWNER MANAGED AND STRATEGICALLY LOCATED MINUTES FROM A MAJOR INTERSTATE IN THE EAST BAY AND CENTRAL VALLEY.

Right Space. Best Place.

www.cranbrookgroup.com

AIRPORT CORPORATE CENTRE

[7677 Oakport Street, Oakland, CA 94621](#)

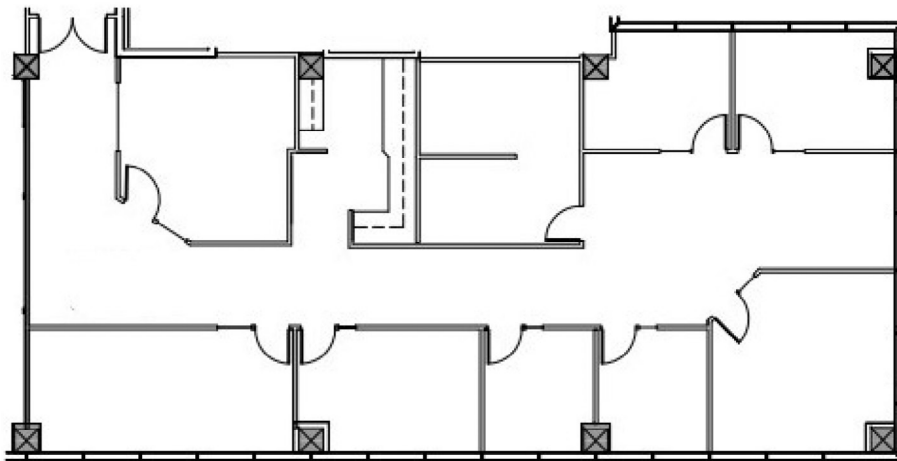


SEE & LEARN MORE ...

Go to cranbrookgroup.com to view more photos and get more information about Airport Corporate Centre and Team Cranbrook!

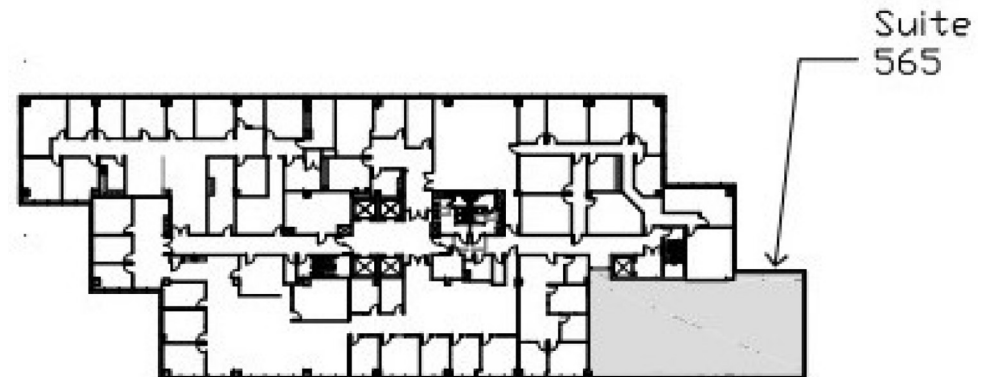
SUITE 565

± 3,237 RENTABLE SQUARE FEET



FIFTH FLOOR KEY PLAN

AVAILABLE SUITE IN GRAY BELOW



For more information, please contact:

Chris Wight

Director of Leasing & Brokerage

O: (209) 549-4960 x 117 | C: (209) 495-1383

cwight@cranbrookgroup.com | DRE #00935049

The information contained herein is based on reliable data, measurements and calculations. We have no reason to doubt its accuracy, but we do not guarantee it. All information should be verified prior to purchase or lease.



ALL PROPERTIES ARE OWNER MANAGED AND STRATEGICALLY LOCATED MINUTES FROM A MAJOR INTERSTATE IN THE EAST BAY AND CENTRAL VALLEY.

Right Space. Best Place.

www.cranbrookgroup.com

AIRPORT CORPORATE CENTRE

[7677 Oakport Street, Oakland, CA 94621](#)

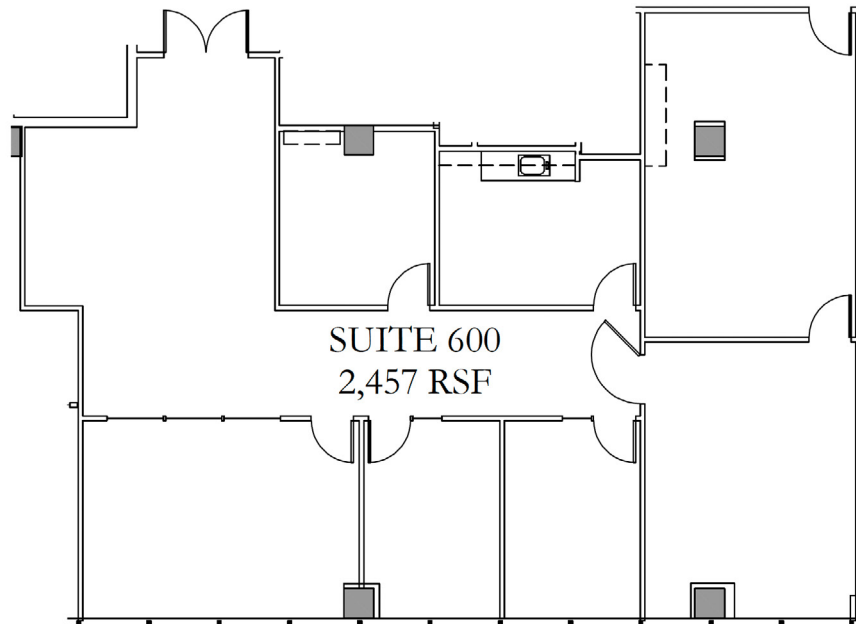


SEE & LEARN MORE ...

Go to cranbrookgroup.com to view more photos and get more information about Airport Corporate Centre and Team Cranbrook!

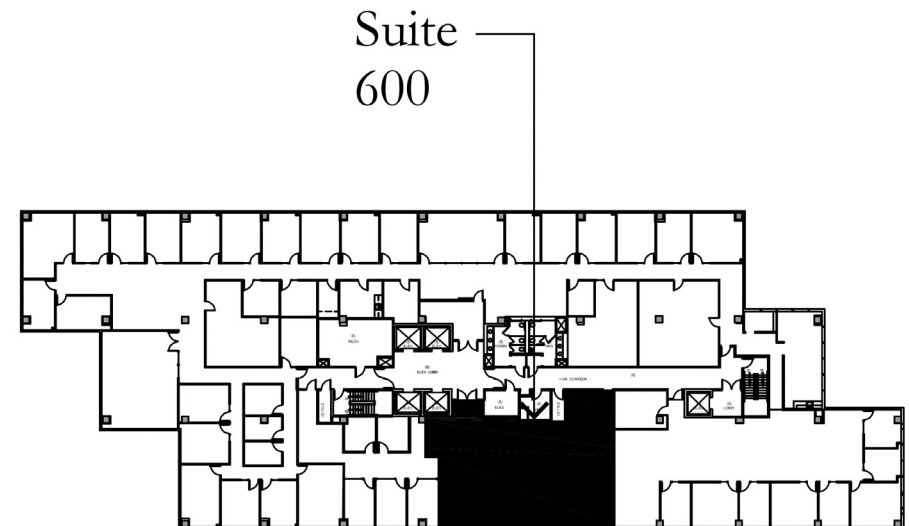
SUITE 600

± 2,457 RENTABLE SQUARE FEET



SIXTH FLOOR KEY PLAN

AVAILABLE SUITE IN BLACK BELOW



For more information, please contact:

Chris Wight

Director of Leasing & Brokerage

O: (209) 549-4960 x 117 | C: (209) 495-1383

cwight@cranbrookgroup.com | DRE #00935049

The information contained herein is based on reliable data, measurements and calculations. We have no reason to doubt its accuracy, but we do not guarantee it. All information should be verified prior to purchase or lease.



ALL PROPERTIES ARE OWNER MANAGED AND STRATEGICALLY LOCATED MINUTES FROM A MAJOR INTERSTATE IN THE EAST BAY AND CENTRAL VALLEY.

Right Space. Best Place.

www.cranbrookgroup.com

AIRPORT CORPORATE CENTRE

[7677 Oakport Street, Oakland, CA 94621](#)

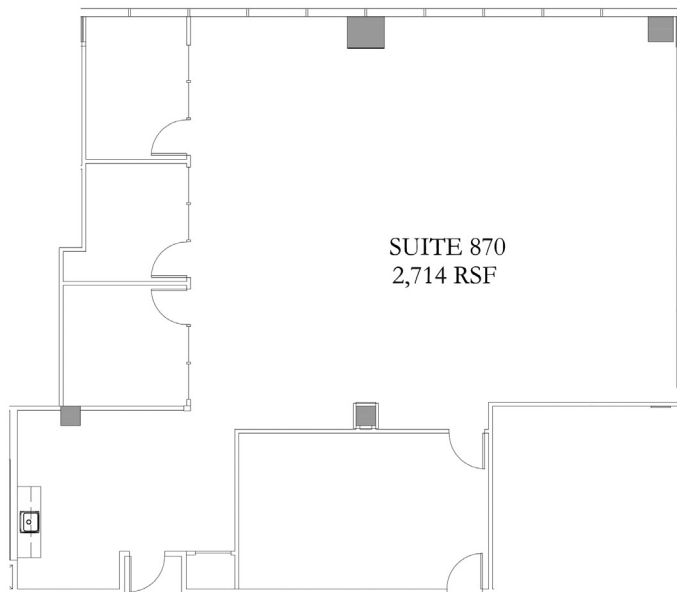


SEE & LEARN MORE ...

Go to cranbrookgroup.com to view more photos and get more information about Airport Corporate Centre and Team Cranbrook!

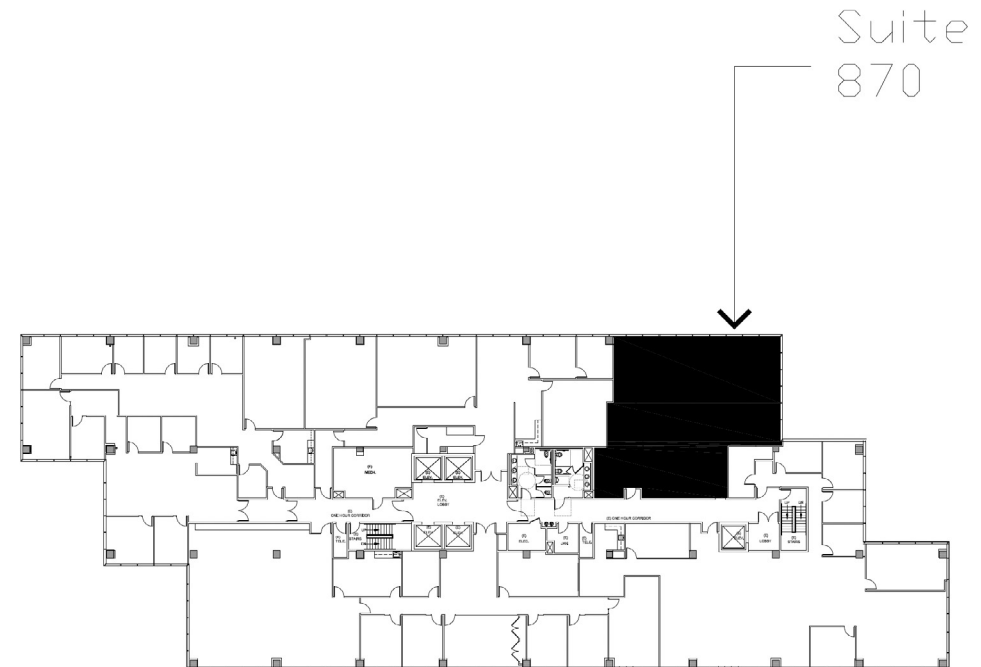
SUITE 870

± 2,714 RENTABLE SQUARE FEET



EIGHTH FLOOR KEY PLAN

AVAILABLE SUITE IN BLACK BELOW



For more information, please contact:

Chris Wight

Director of Leasing & Brokerage

O: (209) 549-4960 x 117 | C: (209) 495-1383

cwight@cranbrookgroup.com | DRE #00935049

The information contained herein is based on reliable data, measurements and calculations. We have no reason to doubt its accuracy, but we do not guarantee it. All information should be verified prior to purchase or lease.



ALL PROPERTIES ARE OWNER MANAGED AND STRATEGICALLY LOCATED MINUTES FROM A MAJOR INTERSTATE IN THE EAST BAY AND CENTRAL VALLEY.

Right Space. Best Place.

www.cranbrookgroup.com

AIRPORT CORPORATE CENTRE

[7677 Oakport Street, Oakland, CA 94621](#)

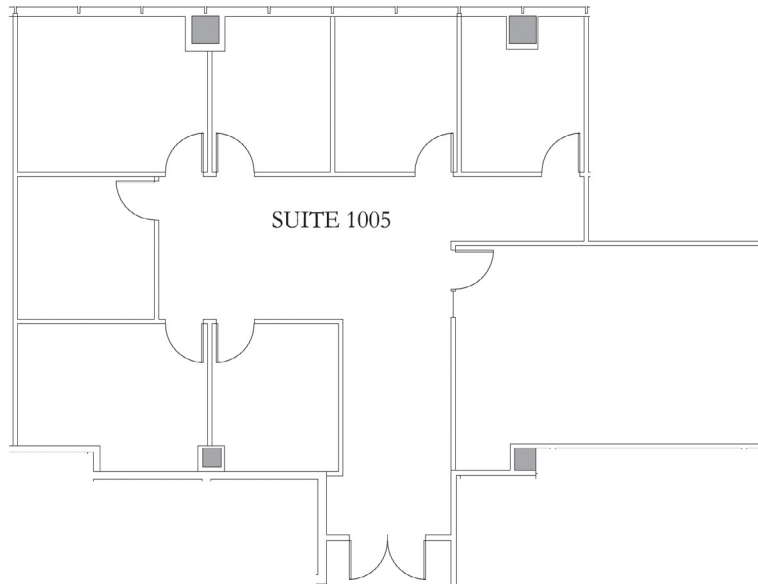


SEE & LEARN MORE ...

Go to cranbrookgroup.com to view more photos and get more information about Airport Corporate Centre and Team Cranbrook!

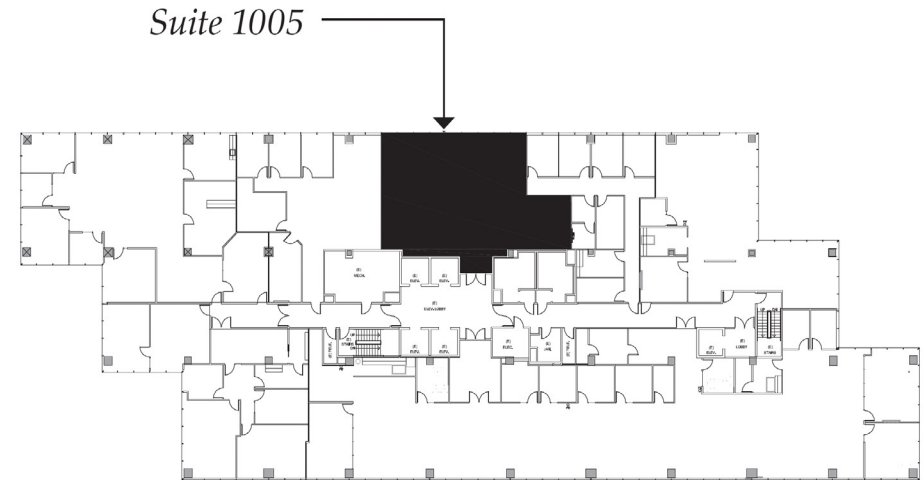
SUITE 1005

± 2,180 RENTABLE SQUARE FEET



TENTH FLOOR KEY PLAN

AVAILABLE SUITE IN BLACK BELOW



For more information, please contact:

Chris Wight

Director of Leasing & Brokerage

O: (209) 549-4960 x 117 | C: (209) 495-1383

cwight@cranbrookgroup.com | DRE #00935049

The information contained herein is based on reliable data, measurements and calculations. We have no reason to doubt its accuracy, but we do not guarantee it. All information should be verified prior to purchase or lease.



ALL PROPERTIES ARE OWNER MANAGED AND STRATEGICALLY LOCATED MINUTES FROM A MAJOR INTERSTATE IN THE EAST BAY AND CENTRAL VALLEY.

Right Space. Best Place.

www.cranbrookgroup.com

AIRPORT CORPORATE CENTRE

[7677 Oakport Street, Oakland, CA 94621](#)

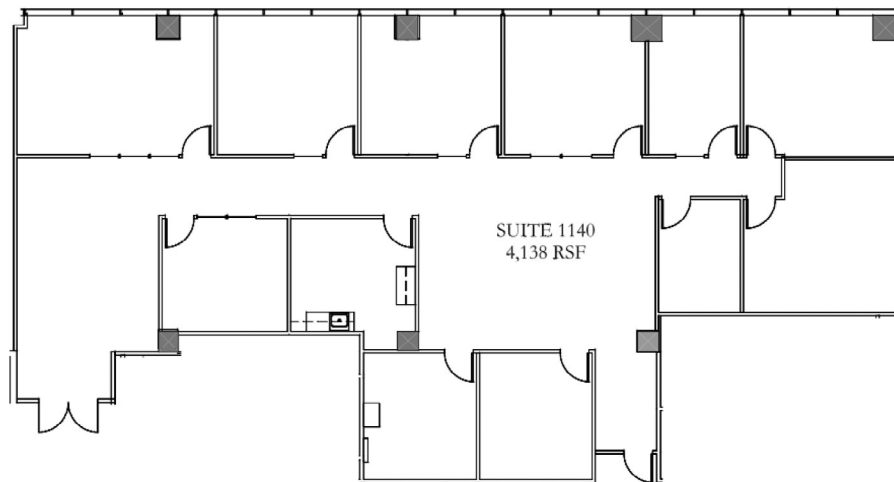


SEE & LEARN MORE ...

Go to cranbrookgroup.com to view more photos and get more information about Airport Corporate Centre and Team Cranbrook!

SUITE 1140

± 4,138 RENTABLE SQUARE FEET



ELEVENTH FLOOR KEY PLAN

AVAILABLE SUITE IN BLACK BELOW



For more information, please contact:

Chris Wight

Director of Leasing & Brokerage

O: (209) 549-4960 x 117 | C: (209) 495-1383

cwight@cranbrookgroup.com | DRE #00935049

The information contained herein is based on reliable data, measurements and calculations. We have no reason to doubt its accuracy, but we do not guarantee it. All information should be verified prior to purchase or lease.



ALL PROPERTIES ARE OWNER MANAGED AND
STRATEGICALLY LOCATED MINUTES FROM A MAJOR INTERSTATE
IN THE EAST BAY AND CENTRAL VALLEY.

Right Space. Best Place.

www.cranbrookgroup.com

AIRPORT CORPORATE CENTRE

[7677 Oakport Street, Oakland, CA 94621](#)

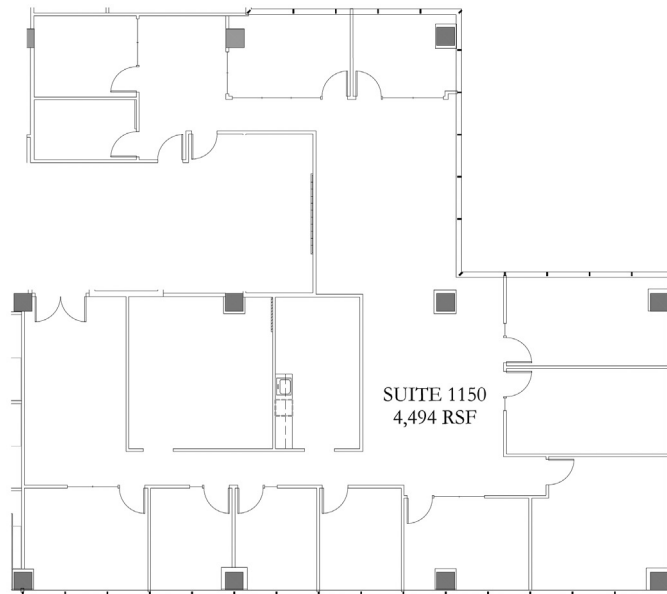


SEE & LEARN MORE ...

Go to cranbrookgroup.com to view more photos and get more information about Airport Corporate Centre and Team Cranbrook!

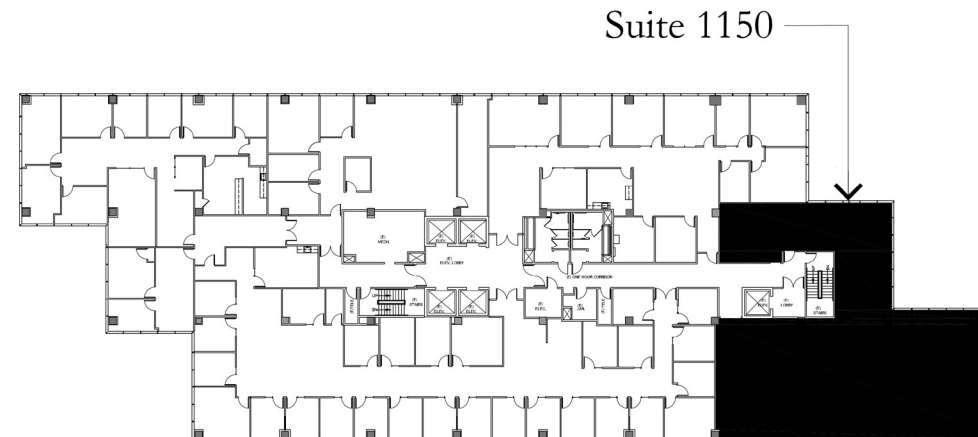
SUITE 1150

± 4,494 RENTABLE SQUARE FEET



ELEVENTH FLOOR KEY PLAN

AVAILABLE SUITE IN BLACK BELOW



For more information, please contact:

Chris Wight

Director of Leasing & Brokerage

O: (209) 549-4960 x 117 | C: (209) 495-1383

cwight@cranbrookgroup.com | DRE #00935049

The information contained herein is based on reliable data, measurements and calculations. We have no reason to doubt its accuracy, but we do not guarantee it. All information should be verified prior to purchase or lease.



ALL PROPERTIES ARE OWNER MANAGED AND STRATEGICALLY LOCATED MINUTES FROM A MAJOR INTERSTATE IN THE EAST BAY AND CENTRAL VALLEY.

Right Space. Best Place.

www.cranbrookgroup.com

AIRPORT CORPORATE CENTRE

[7677 Oakport Street, Oakland, CA 94621](#)

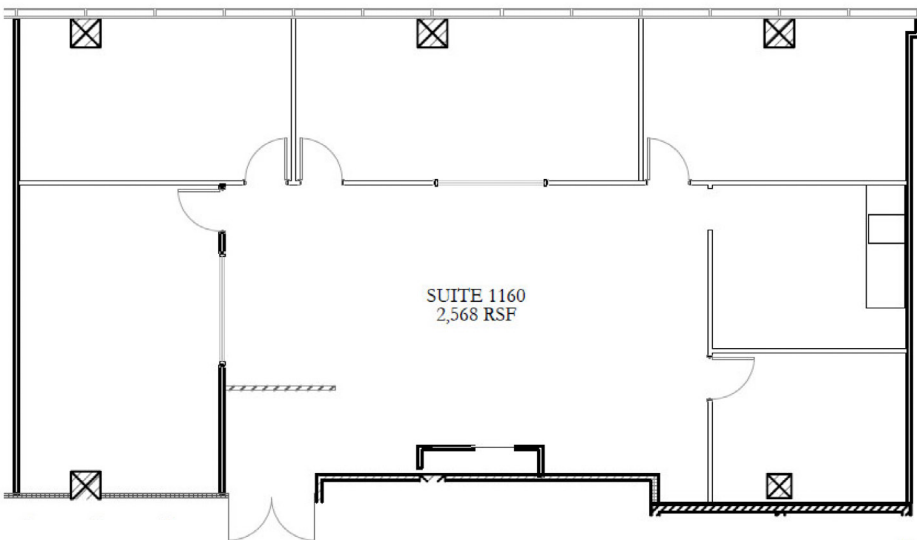


SEE & LEARN MORE ...

Go to cranbrookgroup.com to view more photos and get more information about Airport Corporate Centre and Team Cranbrook!

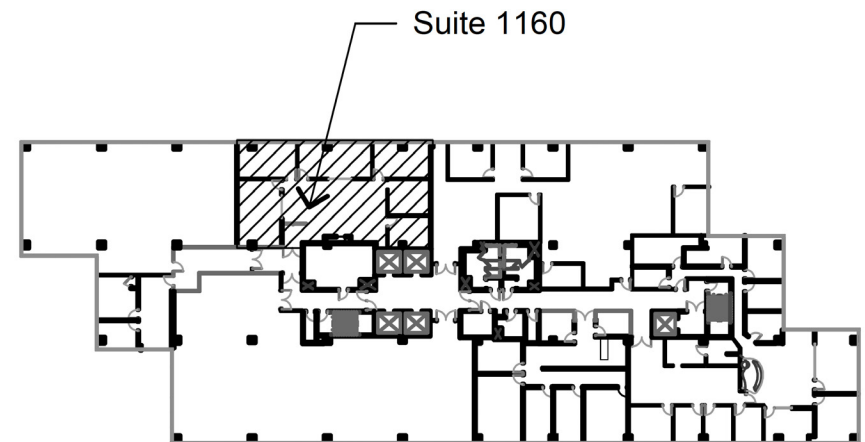
SUITE 1160

± 2,568 RENTABLE SQUARE FEET



ELEVENTH FLOOR KEY PLAN

AVAILABLE SUITE IN BLACK BELOW



For more information, please contact:

Chris Wight

Director of Leasing & Brokerage

O: (209) 549-4960 x 117 | C: (209) 495-1383

cwight@cranbrookgroup.com | DRE #00935049

The information contained herein is based on reliable data, measurements and calculations. We have no reason to doubt its accuracy, but we do not guarantee it. All information should be verified prior to purchase or lease.



ALL PROPERTIES ARE OWNER MANAGED AND STRATEGICALLY LOCATED MINUTES FROM A MAJOR INTERSTATE IN THE EAST BAY AND CENTRAL VALLEY.

Right Space. Best Place.

www.cranbrookgroup.com

AIRPORT CORPORATE CENTRE

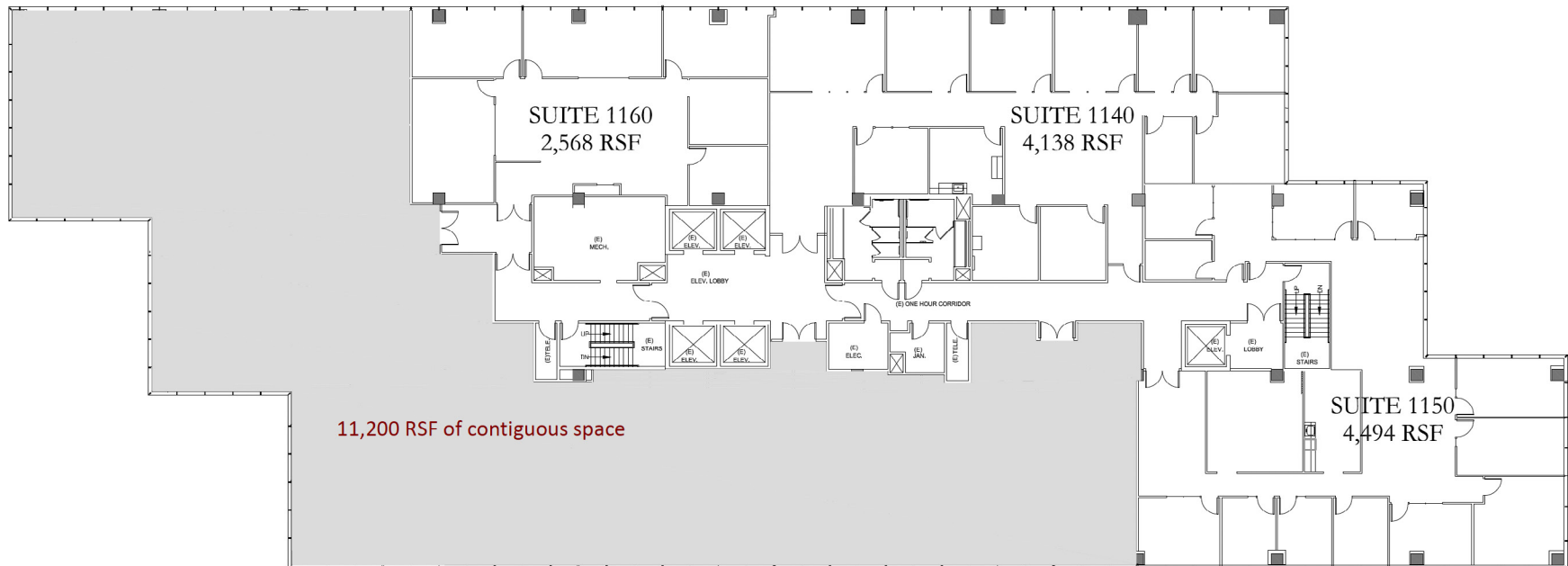
[7677 Oakport Street, Oakland, CA 94621](#)



SEE & LEARN MORE ...

Go to cranbrookgroup.com to view more photos and get more information about Airport Corporate Centre and Team Cranbrook!

11TH FLOOR CONTIGUOUS AVAILABILITIES



For more information, please contact:

Chris Wight

Director of Leasing & Brokerage

O: (209) 549-4960 x 117 | C: (209) 495-1383

cwight@cranbrookgroup.com | DRE #00935049

The information contained herein is based on reliable data, measurements and calculations. We have no reason to doubt its accuracy, but we do not guarantee it. All information should be verified prior to purchase or lease.

