



POTENTIAL 2ND FLOOR AVAILABLE

11,644 SF AVAILABLE

2,300 SF AVAILABLE

AVAILABLE:

11,644 SF & 2,300 SF (adjoining 6,000 SF 2nd floor space can be made available) to create 8,300 SF or a total of Approx. 20,000 SF

Join JD Sports, Snipes, Shoppers World, and others on bustling Broad St. in downtown Elizabeth, NJ.

The Christian Bollwage Parking Garage is just a few minutes' walk to the subject space located behind the subject space.

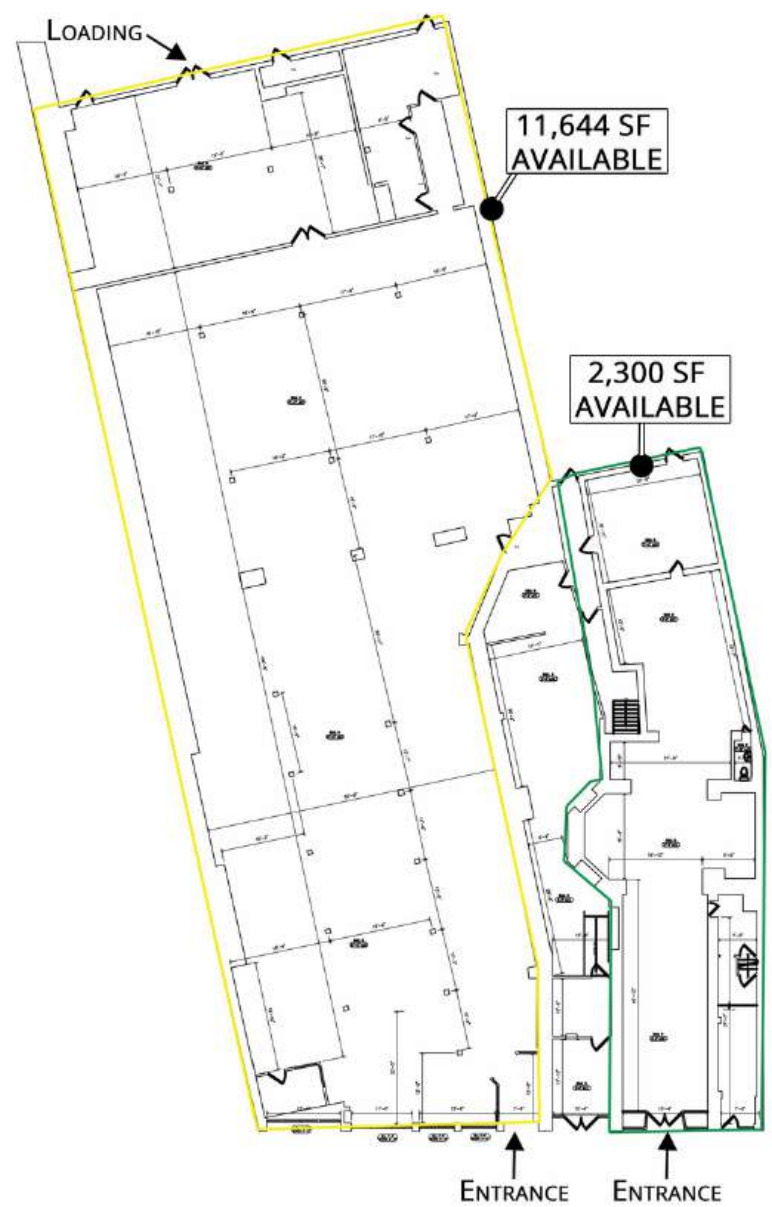
Within just 3 blocks of the subject site is Trinitas Regional Medical Center; Union County Community College Campus, the Elizabeth train station, which services about 3,000 passengers per day; and many regional and national retailers, and restaurants

C5 Zoning allows for general and community retail, restaurants, amusement, entertainment, medical and fitness.

Demographics	1 Mile	3 Miles	5 Miles
Population:	70,260	265,581	621,219
HH Income:	\$84,286	\$104,390	\$105,659
Daytime Pop	63,342	202,045	538,513

Traffic Counts

Broad St.	14,338 Cars Per Day
-----------	---------------------

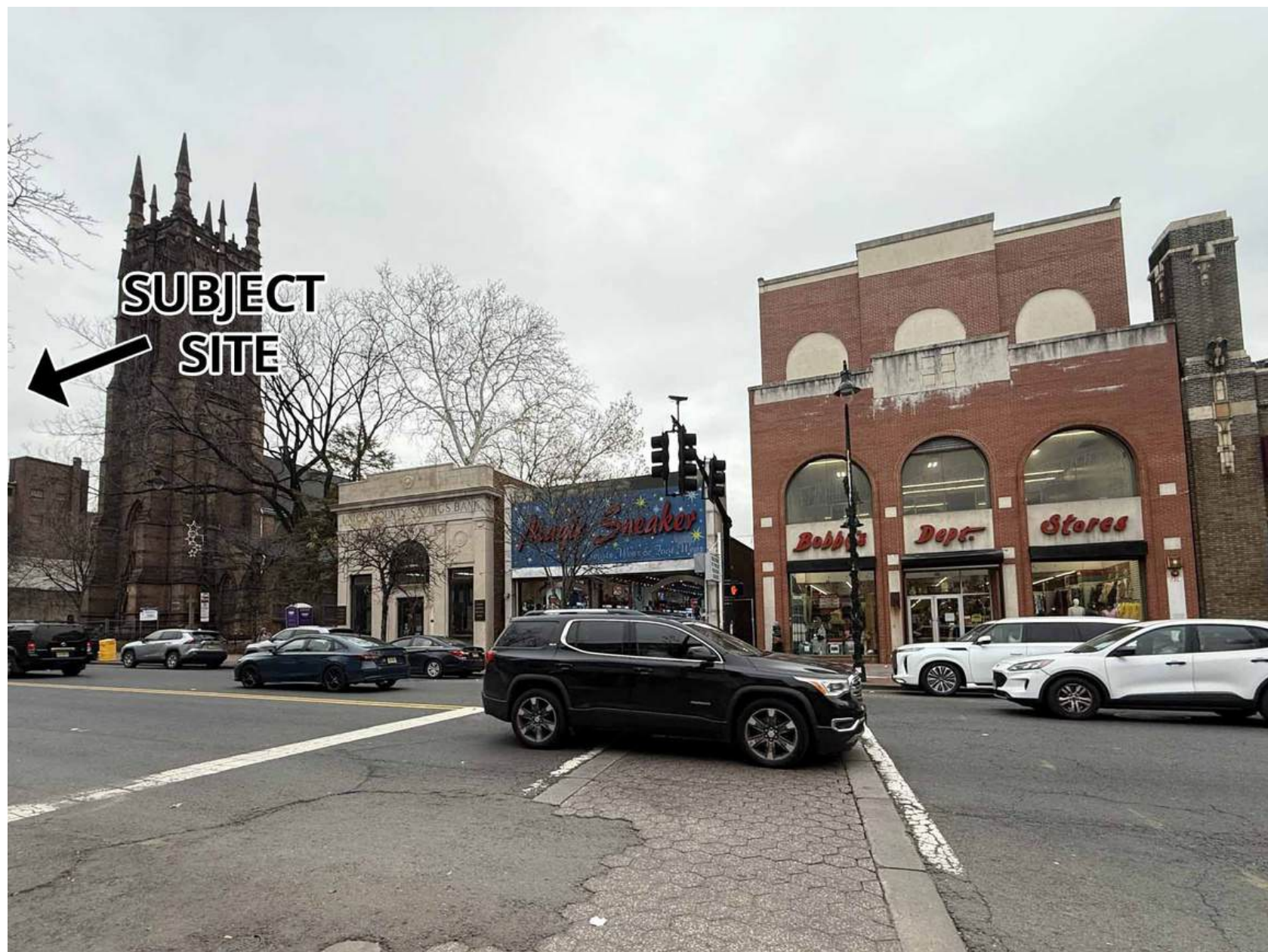


GROUND FLOOR PLAN















56-64 Broad St.
AVAILABLE FOR LEASE

CONNECT WITH US TODAY



DANIELLE BRUNELLI
dbrunelli@rjbrunelli.com
732-721-5800 ext. 29



SUSAN PREISLER
spreisler@rjbrunelli.com
C: 201-739-0607



NISSI WASSERMAN
nwasserman@rjbrunelli.com
C: 732-503-0717



R.J. Brunelli & Co., LLC,
400 Perrine Rd, Ste 405 Old Bridge, NJ 08857
732-721-5800 www.rjbrunelli.com