

979

OGDEN AVENUE PARKCHESTER, BRONX

Between West 162nd & 164th Streets

COMMUNITY FACILITY/RETAIL FOR LEASE

APPROXIMATE SIZE

5,000 SF

ASKING RENT

\$45 PSF

POSSESSION

Immediate

TERM

Negotiable

FRONTAGE

70 FT

COMMENTS

- Community facility/retail space at the base of a new development
- Private entrance
- Expansive and oversized window frontage
- Parking available on premises and nearby

NEIGHBORS

Prime Storage • RC Meat Market • Virginia Beauty Parlor • J&E Group Family Daycare • Best Western • Super Laundry of Crescent • El Guano Deli Grocery

TRANSPORTATION



PROPERTY INFORMATION

NOAM AZIZ

Director
212.468.5984
naziz@meridiancapital.com

NATHAN SHABOT

Associate
212.468.5933
nshabot@meridiancapital.com

MICHAEL ESCAVA

Associate
212.468.5918
mescava@meridiancapital.com



MERIDIAN
RETAIL LEASING

All information supplied is from sources deemed reliable and is furnished subject to errors, omissions, modifications, removal of the listing from sale or lease, and to any listing conditions, including the rates and manner of payment of commissions for particular offerings imposed by Meridian Capital Group. This information may include estimates and projections prepared by Meridian Capital Group with respect to future events, and these future events may or may not actually occur. Such estimates and projections reflect various assumptions concerning anticipated results. While Meridian Capital Group believes these assumptions are reasonable, there can be no assurance that any of these estimates and projections will be correct. Therefore, actual results may vary materially from these estimates and projections. Any square footage dimensions set forth are approximate.

979 OGDEN AVENUE

PARKCHESTER, BRONX | Between West 162nd and 164th Streets

COMMUNITY FACILITY/RETAIL FOR LEASE



INTERIOR

NOAM AZIZ

Director
212.468.5984
naziz@meridiancapital.com

NATHAN SHABOT

Associate
212.468.5933
nshabot@meridiancapital.com

MICHAEL ESCAVA

Associate
212.468.5918
mescava@meridiancapital.com



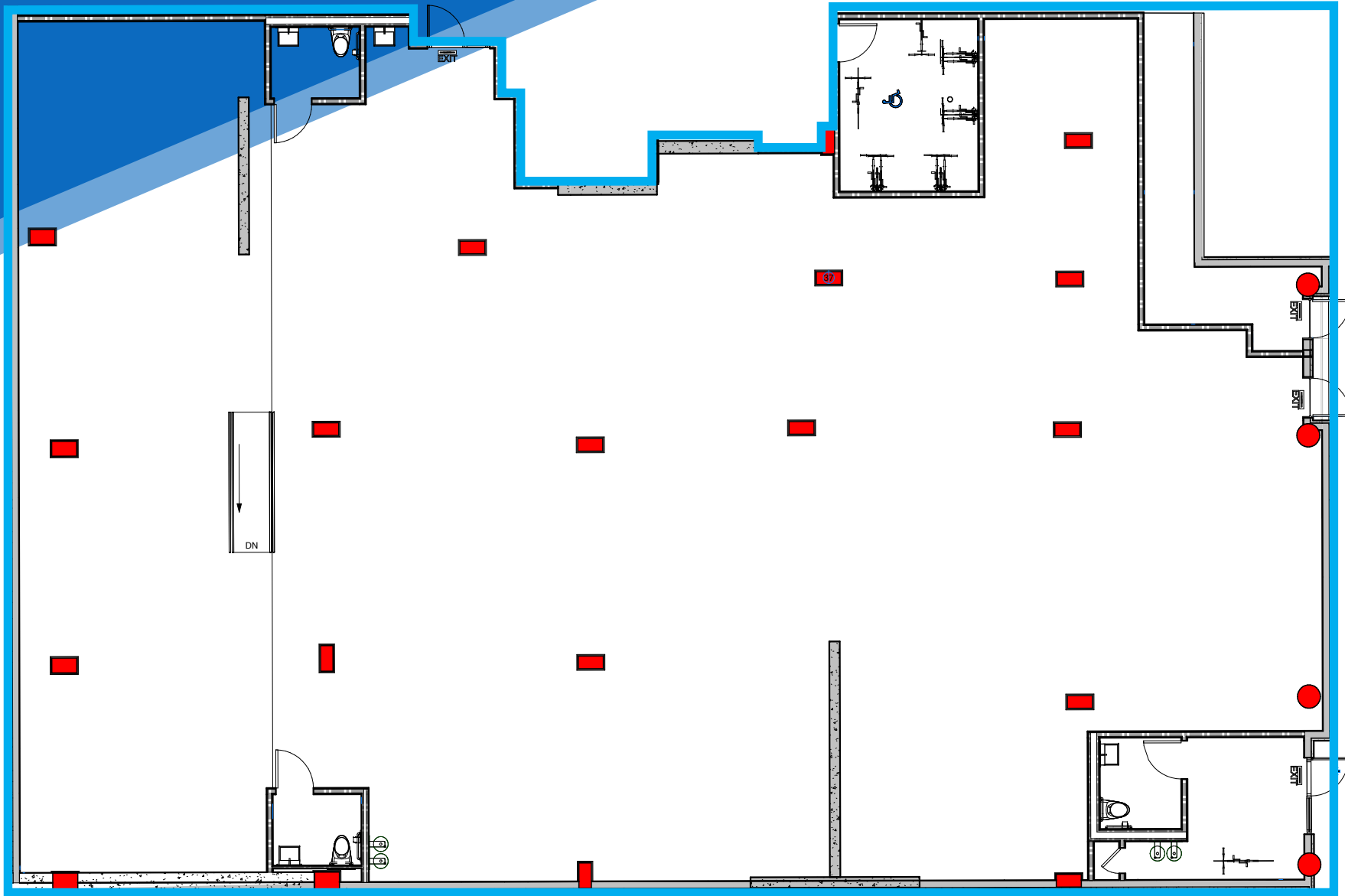
MERIDIAN
RETAIL LEASING

All information supplied is from sources deemed reliable and is furnished subject to errors, omissions, modifications, removal of the listing from sale or lease, and to any listing conditions, including the rates and manner of payment of commissions for particular offerings imposed by Meridian Capital Group. This information may include estimates and projections prepared by Meridian Capital Group with respect to future events, and these future events may or may not actually occur. Such estimates and projections reflect various assumptions concerning anticipated results. While Meridian Capital Group believes these assumptions are reasonable, there can be no assurance that any of these estimates and projections will be correct. Therefore, actual results may vary materially from these estimates and projections. Any square footage dimensions set forth are approximate.

979 OGDEN AVENUE
PARKCHESTER, BRONX | Between West 162nd and 164th Streets

COMMUNITY FACILITY/RETAIL FOR LEASE

FLOOR PLAN



NOAM AZIZ

Director
212.468.5984
naziz@meridiancapital.com

NATHAN SHABOT

Associate
212.468.5933
nshabot@meridiancapital.com

MICHAEL ESCAVA

Associate
212.468.5918
mescava@meridiancapital.com



MERIDIAN
RETAIL LEASING

All information supplied is from sources deemed reliable and is furnished subject to errors, omissions, modifications, removal of the listing from sale or lease, and to any listing conditions, including the rates and manner of payment of commissions for particular offerings imposed by Meridian Capital Group. This information may include estimates and projections prepared by Meridian Capital Group with respect to future events, and these future events may or may not actually occur. Such estimates and projections reflect various assumptions concerning anticipated results. While Meridian Capital Group believes these assumptions are reasonable, there can be no assurance that any of these estimates and projections will be correct. Therefore, actual results may vary materially from these estimates and projections. Any square footage dimensions set forth are approximate.

979 OGDEN AVENUE

PARKCHESTER, BRONX | Between West 162nd and 164th Streets

COMMUNITY FACILITY/RETAIL FOR LEASE

NEIGHBORS



NOAM AZIZ

Director
212.468.5984
naziz@meridiancapital.com

NATHAN SHABOT

Associate
212.468.5933
nshabot@meridiancapital.com

MICHAEL ESCAVA

Associate
212.468.5918
mescava@meridiancapital.com



MERIDIAN
RETAIL LEASING

All information supplied is from sources deemed reliable and is furnished subject to errors, omissions, modifications, removal of the listing from sale or lease, and to any listing conditions, including the rates and manner of payment of commissions for particular offerings imposed by Meridian Capital Group. This information may include estimates and projections prepared by Meridian Capital Group with respect to future events, and these future events may or may not actually occur. Such estimates and projections reflect various assumptions concerning anticipated results. While Meridian Capital Group believes these assumptions are reasonable, there can be no assurance that any of these estimates and projections will be correct. Therefore, actual results may vary materially from these estimates and projections. Any square footage dimensions set forth are approximate.