

RINCON CORPORATE PLAZA

**SPEC SUITES
ARE HERE**



355 Rincon Street, Corona, CA 92879

PROPERTY HIGHLIGHTS

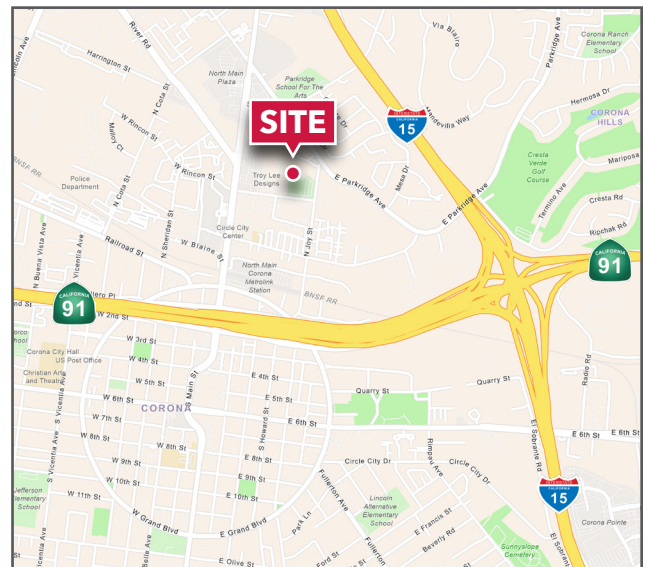
- Three Story, Corporate Image Office Building
- 4:1,000 SF Parking and Shaded Common Areas
- Secured, Tranquil, Well-Maintained
- Iconic California. Palm Trees and Snow-Capped Mountains grace your Window Line
- Close to Amenities including Starbucks, Panera, Fitness, Banking, Dental, Auto Services, Metro, Freeway Access & Fast-Track Lanes
- Come See Our New Spec Suites!
- \$2.45 Per SF; Full Service Gross

For More Information Contact:

David Mudge, CCIM, SIOR
SENIOR VICE PRESIDENT
DRE# 01070762
951.276.3611
dsmudge@lee-associates.com

Reid Sisson
VICE PRESIDENT
DRE# 01981528
951.276.3620
rsisson@lee-associates.com

Lindsay Mingee, CCIM
DRE# 01920658
714.317.3606
lmingee@lee-associates.com





AVAILABILITIES

Suite	Floor	Size	Features	Available	Virtual Tour
302*	Third	3,653 RSF	Former Liberty Mutual Customer Service & Sales Office with Formal Reception, Bullpen, Conference Room, Break Room, Glass Offices	Now	View
304*	Third	2,493 RSF	Window-lined Bullpen, Conference Room, Private Offices, Break Room	Now	View
306**	Third	2,157 RSF	Spec Suite with 3 Private Window Offices, Storage, and Coffee Bar with Sink	Now	View
307**	Third	1,569 RSF	Open Bullpen Area	Now	N/A
308**	Third	1,968 RSF	Spec Suite with 3 Private Window Offices	Now	View

*Suites 302 & 304 are contiguous for ±6,146 RSF

**Suites 306/307/308 are contiguous for ±5,694 RSF

For More Information Contact:

David Mudge, CCIM, SIOR
SENIOR VICE PRESIDENT
DRE# 01070762
951.276.3611
dmudge@lee-associates.com

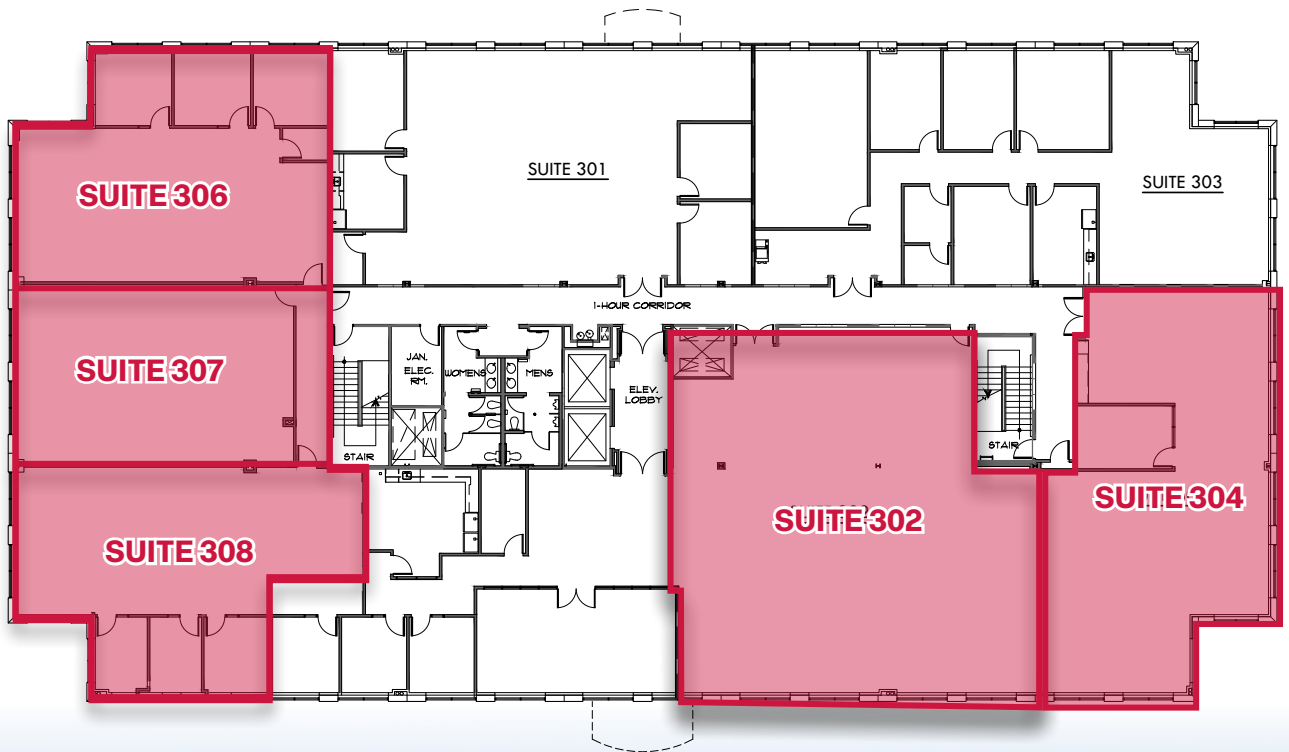
Reid Sisson
VICE PRESIDENT
DRE# 01981528
951.276.3620
rsisson@lee-associates.com

Lindsay Mingee, CCIM
DRE# 01920658
714.317.3606
lmingee@lee-associates.com

RINCON CORPORATE PLAZA

355 Rincon Street, Corona, CA 92879

**3RD
FLOOR**



For More Information Contact:

David Mudge, CCIM, SIOR
SENIOR VICE PRESIDENT
DRE# 01070762
951.276.3611
dmudge@lee-associates.com

Reid Sisson
VICE PRESIDENT
DRE# 01981528
951.276.3620
rsisson@lee-associates.com

Lindsay Minge, CCIM
DRE# 01920658
714.317.3606
lminge@lee-associates.com