

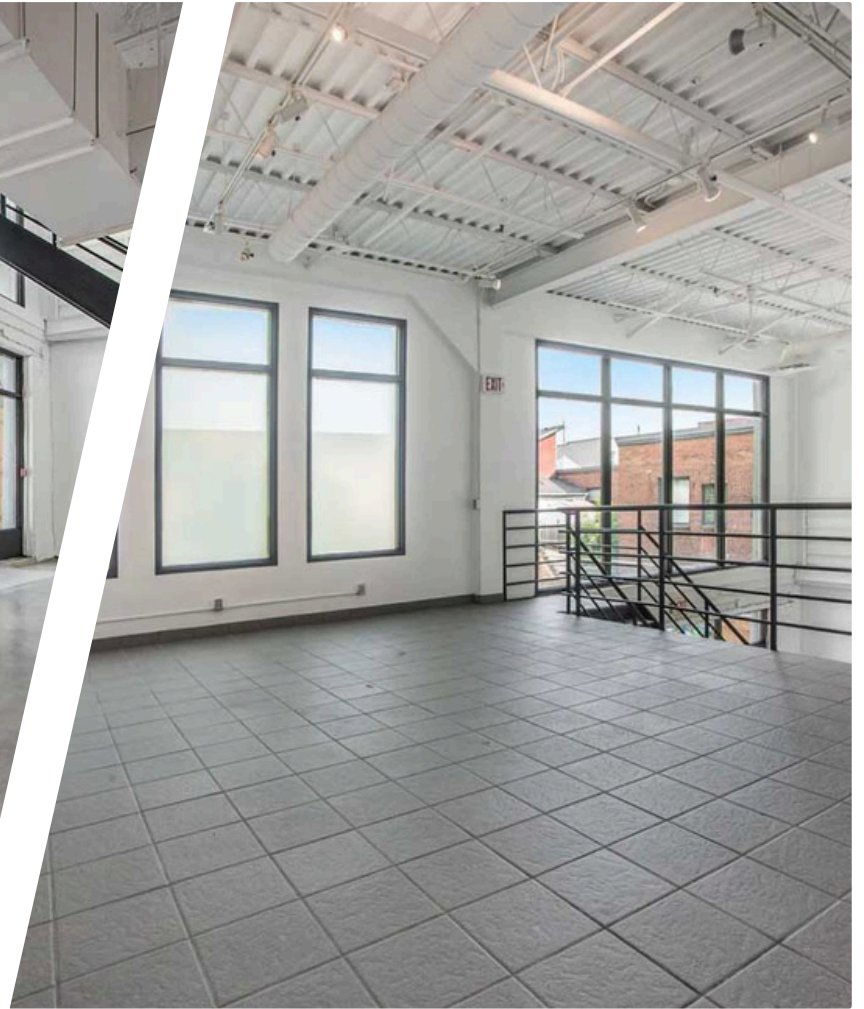
FOR LEASE



101 Murray St.
OTTAWA, ONTARIO



101 Murray St.
OTTAWA, ONTARIO



THE PROPERTIES GROUP MANAGEMENT LTD.
236 Metcalfe Street, Ottawa, ON K2P 1R3

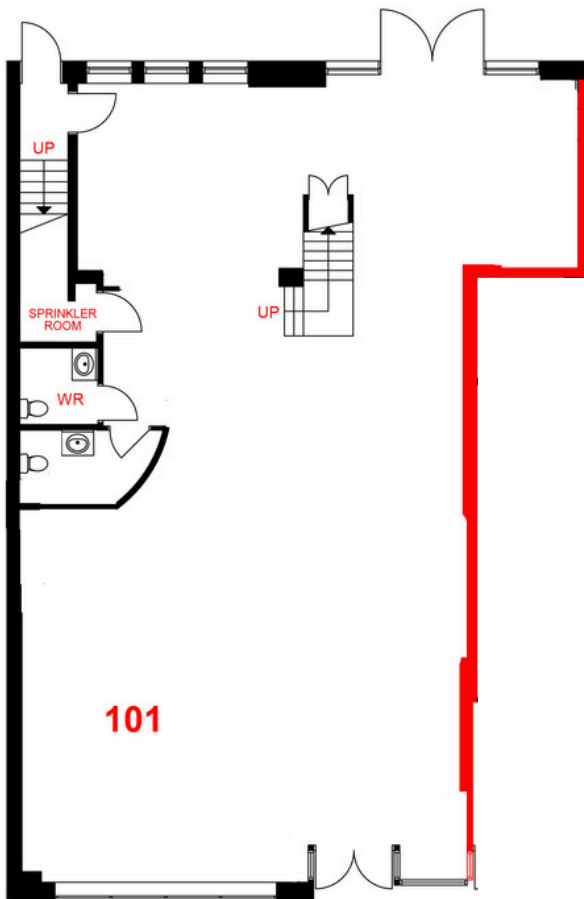
(613) 369-5635 / leasing@prpgrp.com
www.thepropertiesgroup.ca



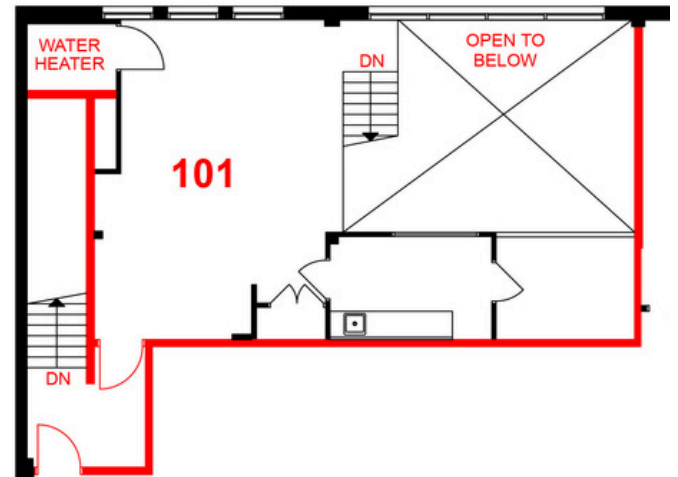
101 Murray St.
OTTAWA, ONTARIO

Ground Floor ~2,696 square feet of gross leasable area
Mezzanine ~664 square feet of gross leasable area

Ground Floor



Mezzanine



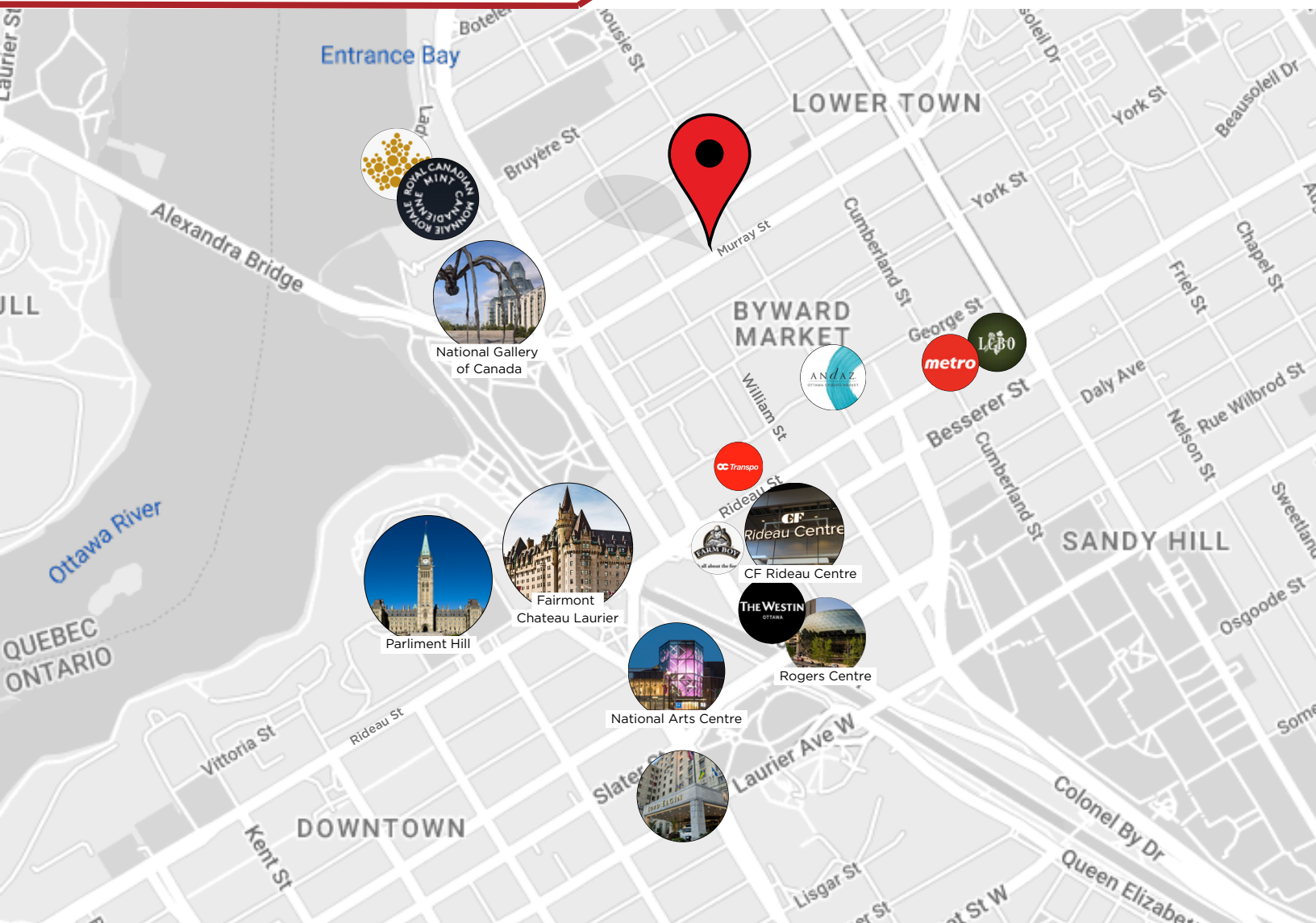
THE ATTACHED DRAWINGS ARE PROVIDED FOR INFORMATION PURPOSES ONLY AND SHOULD NOT BE RELIED UPON. THE LANDLORD SHALL NOT BE HELD RESPONSIBLE FOR THE PURPOSE OF THE TENANT'S WORK AND SPACE PLANNING.

UNIT OVERVIEW

This bright ground floor unit offers ~32' of prime frontage, floor to ceiling windows which flood the space with natural light, and welcoming rear patio with interlocking. The open-concept layout includes a spacious mezzanine featuring an enclosed office and flexible workspace.



101 Murray St.
OTTAWA, ONTARIO



LOCATION DETAILS

- Located in the heart of the iconic ByWard Market, surrounded by top restaurants, cafes, shops and attractions.
- High traffic pedestrian-friendly streets.
- Five minutes from Rideau O-Train station and Rideau Centre.

Information contained herein has been obtained from sources that we deem to be reliable but is not warranted as such and does not form any part of any future contract. This offering may be altered or withdrawn at any time without notice.

THE PROPERTIES GROUP MANAGEMENT LTD.
236 Metcalfe Street, Ottawa, ON K2P 1R3

(613) 369-5635 / leasing@prpgrp.com
www.thepropertiesgroup.ca