

1234 MARKET STREET  
PHILADELPHIA, PA 19107

STEPS  
FROM CITY HALL



## GROUND FLOOR RETAIL | 1,946 SF AVAILABLE FOR LEASE

### PROPERTY HIGHLIGHTS



Turnkey opportunity; currently built out as a pizza restaurant



Furniture and equipment available, including: 2 walk-in refrigerators, built-in tables and seating, built-in counters, full Hood and Ansel System, and more



Located in SEPTA'S Headquarters; 672,143 SF Class-A office building in the heart of Market East



Significant signage opportunities & tremendous visibility -25'2" of frontage along Market Street

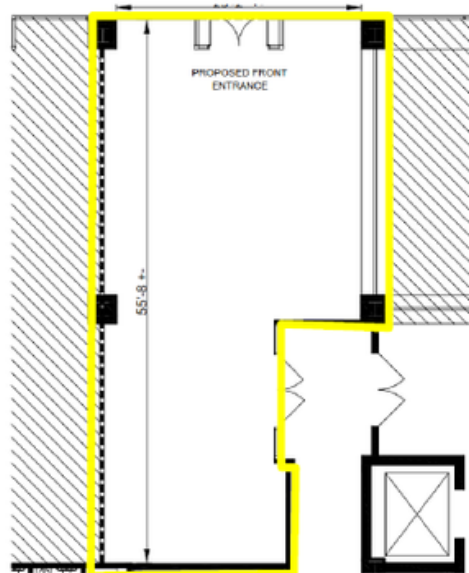


Direct concourse access to SEPTA Regional Rail



Within two blocks of City Hall, Jefferson University Hospital, PA Convention Center, and Reading Terminal Market

Market Street



EXCLUSIVELY  
REPRESENTED BY  
THE FLYNN COMPANY

MICHAEL GALLAGHER  
MGALLAGHER@FLYNNCO.COM  
215-561-6565 X 151

JOSEPH NASELLI  
JNASELLI@FLYNNCO.COM  
215-561-6565 X 155

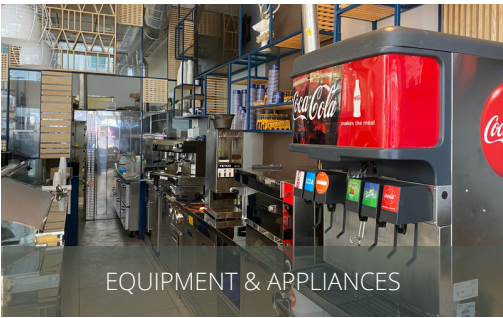
BRENDAN FLYNN  
BFLYNN@FLYNNCO.COM  
215-561-6565 X 152

The  
Flynn  
Company

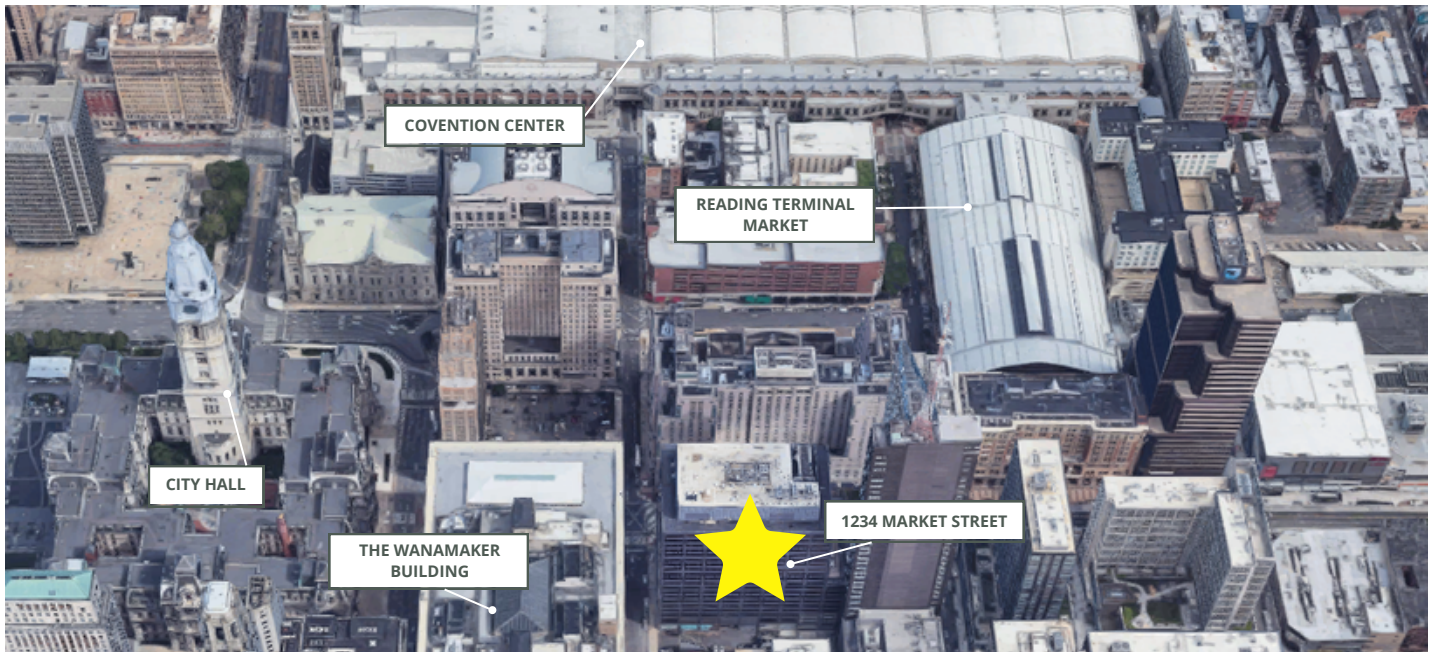
THE FLYNN COMPANY

WWW.FLYNNCO.COM | 1621 WOOD STREET, PHILADELPHIA, PA 19103 | 215.561.6565

## PROPERTY PHOTOS



## MAP



**For More Information  
Please Contact:**

**MICHAEL GALLAGHER**  
MGALLAGHER@FLYNNCO.COM  
215-561-6565 X 151

**JOSEPH NASELLI**  
JNASELLI@FLYNNCO.COM  
215-561-6565 X 155

**BRENDAN FLYNN**  
BFLYNN@FLYNNCO.COM  
215-561-6565 X 152