

**1954B Mt. Diablo Blvd., Walnut Creek, CA**



**AVAILABLE SPACE**

**Asking \$3.50 NNN**

**5 year lease**



**Prominently located in Downtown Walnut Creek with signage on Mt. Diablo Blvd.**

**Onsite Parking.**

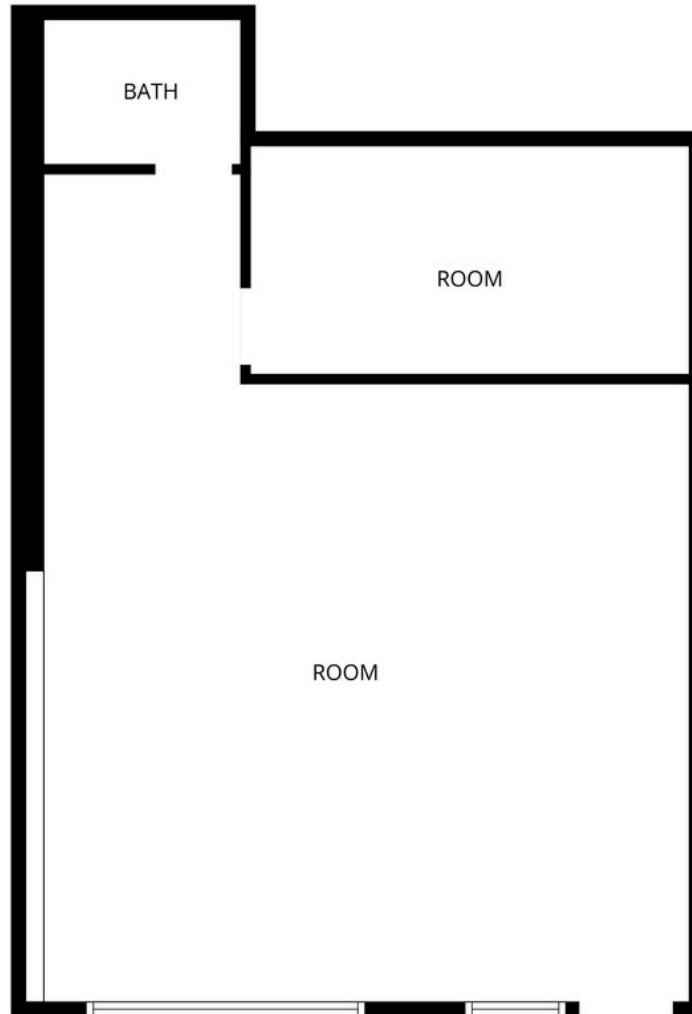
**Private restroom.**

**Tenant pays NNN and utilities.**

**Downtown Walnut Creek with parking, shopping, dining, City Hall, Library all steps away.**

**Jonathan Lien  
Praedium Real Estate, Inc.  
925-876-4256  
jlien@praediumrealestate.com  
CA Broker License 01458138**

**Floor plan - Approx. 750 R.S.F.**



FLOOR PLAN CREATED BY CUBICASA APP. MEASUREMENTS DEEMED HIGHLY RELIABLE BUT NOT GUARANTEED.