

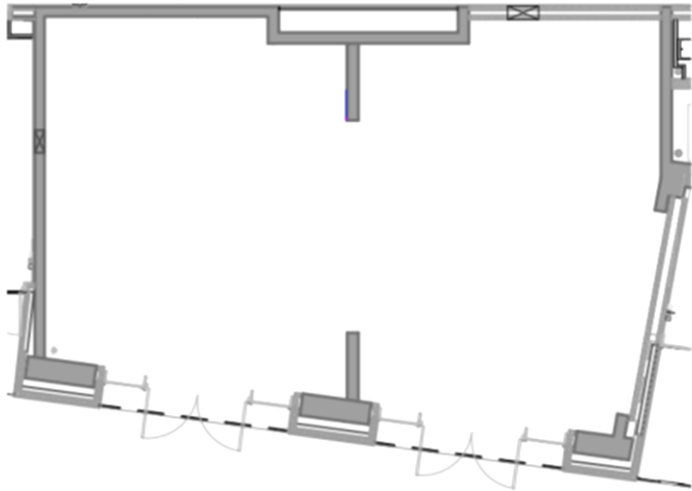


LONDON  
**CITY ISLAND**  
EST. 1891

**ISLAND FOR  
THE ARTS**

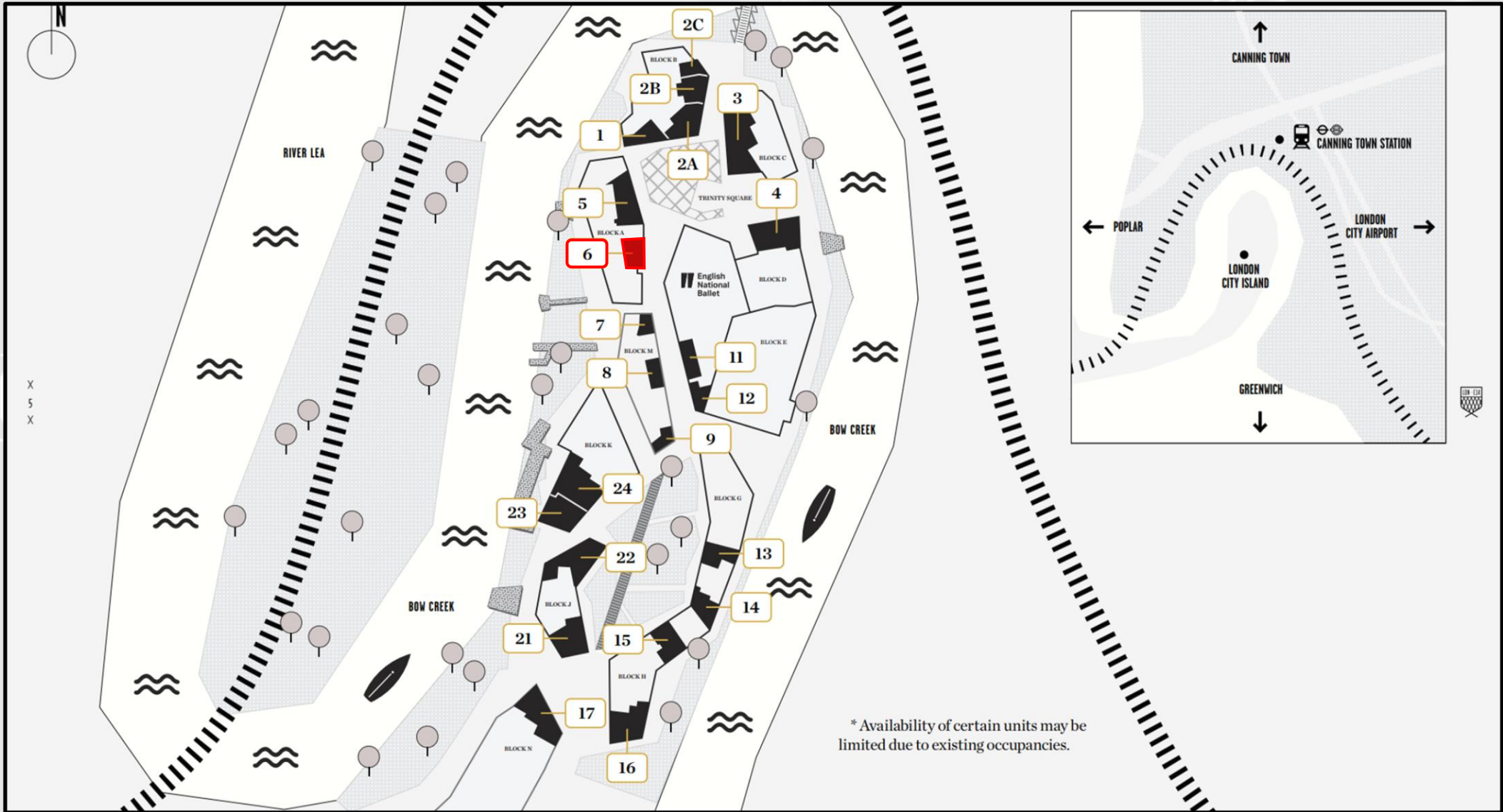
# Fitted Unit | Use Class E | New Lease

**Ground: 1,292 sq ft.**



**POTENTIAL USES:** Retail, Showroom, Offices, Workspace, Studio, Production, Workshop





# Terms



TERMS	THIS UNIT
LEASE	flexible
QUOTING RENT	£23,000 per annum exclusive of VAT, rates and service charge
INCENTIVES	6 - 9 months rent free
SERVICE CHARGE	TBC
RATEABLE VALUE 2026:	£40,250
SPECIFICATION:	partially fitted
INTERNAL VIEW (Copy & Paste into URL)	<a href="https://my.matterport.com/show/?m=2Ru3jX43AVY">https://my.matterport.com/show/?m=2Ru3jX43AVY</a>
<b>SUBJECT TO CONTRACT</b>	



## CONTACT US

We'd love to help you discover everything London City Island has to offer. Get in touch to learn more about our homes, amenities, and vibrant island community.



### JOSH GAMBER

[josh.gamber@shackletonproperty.com](mailto:josh.gamber@shackletonproperty.com)  
0759 688 5622

### TONY MOORE

[tony.moore@shackletonproperty.com](mailto:tony.moore@shackletonproperty.com)  
0779 242 9660