



# 1110

## BRICKELL

*Luxury Office Space*

# THE WORKPLACE ELEVATED

Positioned at the epicenter of Miami's prestigious Financial Corridor, 1110 Brickell Avenue represents a premier business address along the iconic Brickell Avenue—where commerce, connectivity, and culture converge.

Surrounded by world-class financial institutions and global firms, 1110 Brickell Avenue offers not just an address, but a dynamic, amenity-rich environment designed for today's forward-thinking businesses.

SUITE	RSF	POSSESSION	CONDITION
800 A/B	1,062	Immediate	2nd Generation
802	446	Immediate	2nd Generation



# SUITE 800 A | B

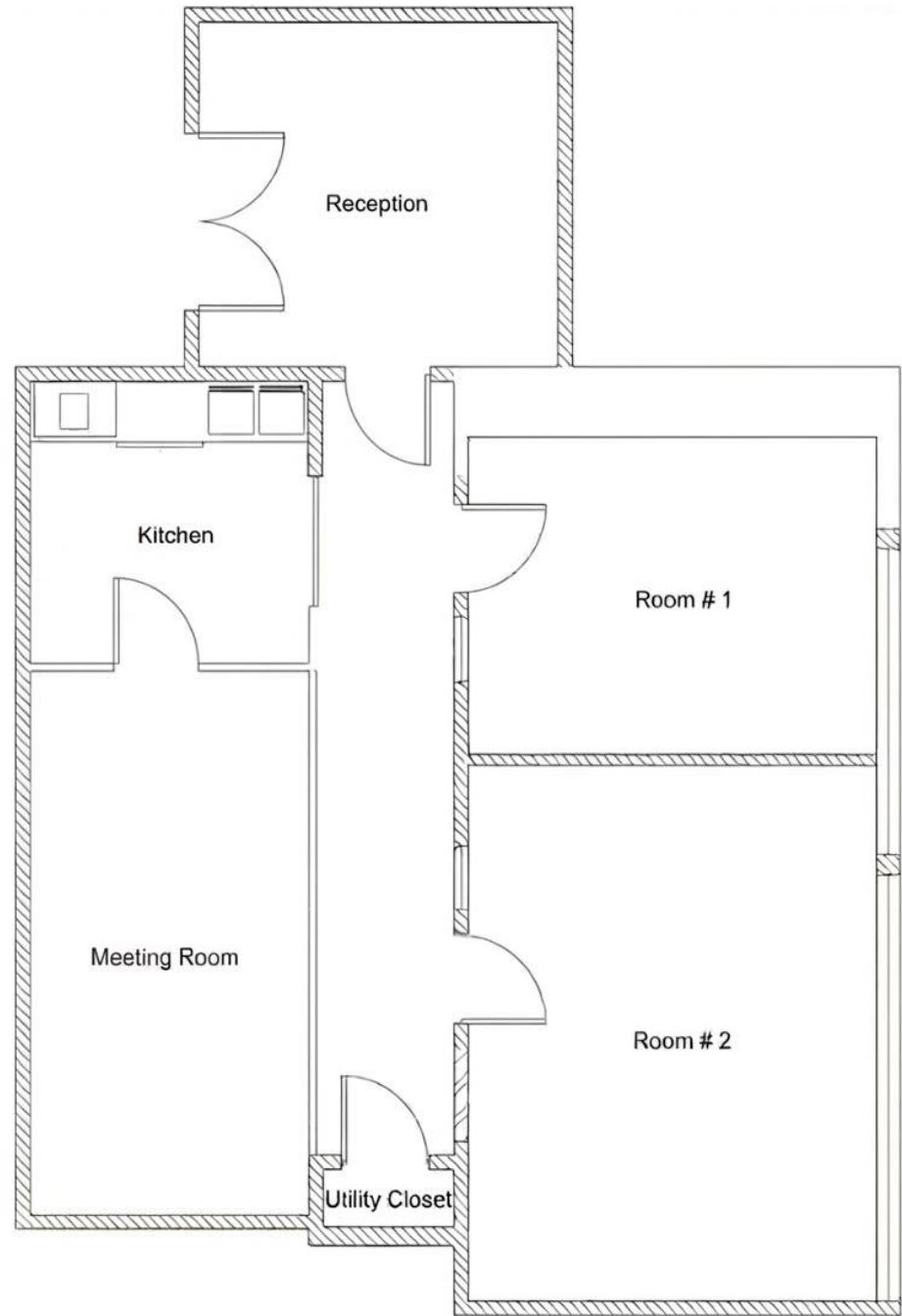
1,062 SF

VIEW SUITE 800

 Matterport®

1110  
BRICKELL

SW 12th Street



Brickell Avenue

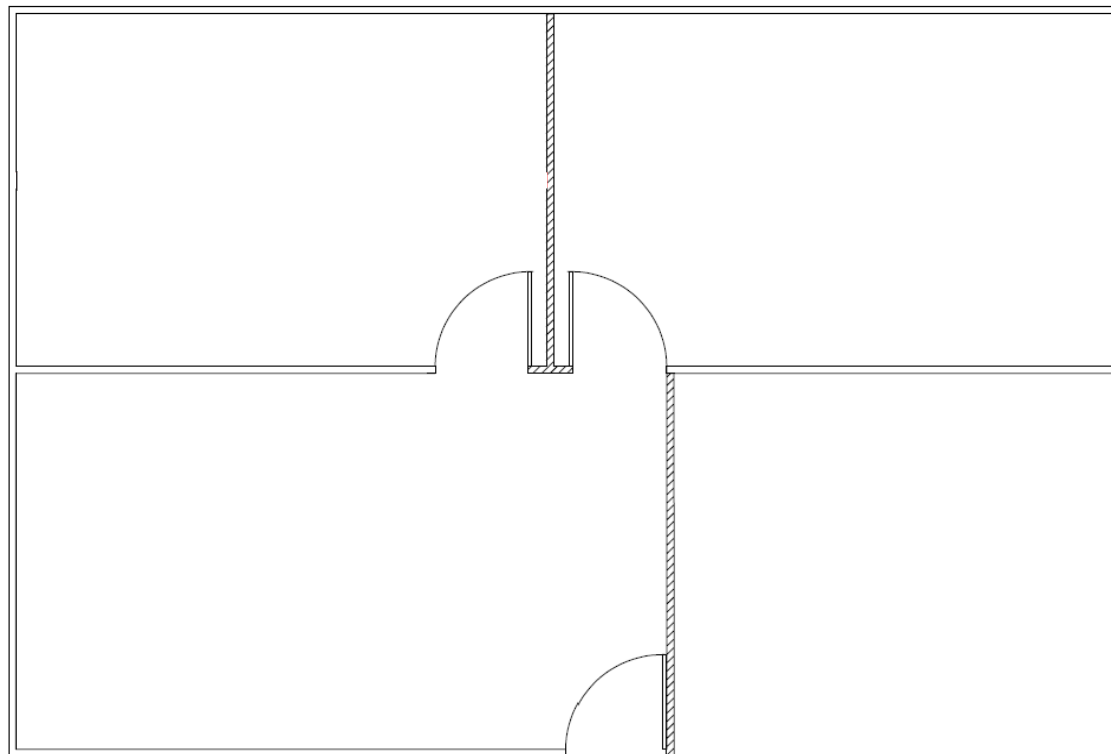
# SUITE 802

446 SF

VIEW SUITE 802

 Matterport®

1110  
BRICKELL





# UNPRECEDENTED LOCATION

**4**

**MIN WALK**  
*Metro Mover*

**6**

**MIN WALK**  
*Mary Brickell Village*

**8**

**MIN WALK**  
*Metro Rail Station*

**10**

**MIN WALK**  
*Brickell City Centre*

**10**

**MIN DRIVE**  
*Downtown*

**15**

**MIN DRIVE**  
*Coconut Grove*

**1110**  
BRICKELL

# 1110 BRICKELL

*For More Information*

*Cameron Tallon*

+1 407 284 7455

[cameron.tallon@cbre.com](mailto:cameron.tallon@cbre.com)

**CBRE**