

±1,910 SF Warehouse/Office Space



For Lease

359 Beach Road Burlingame, California

Property Highlights

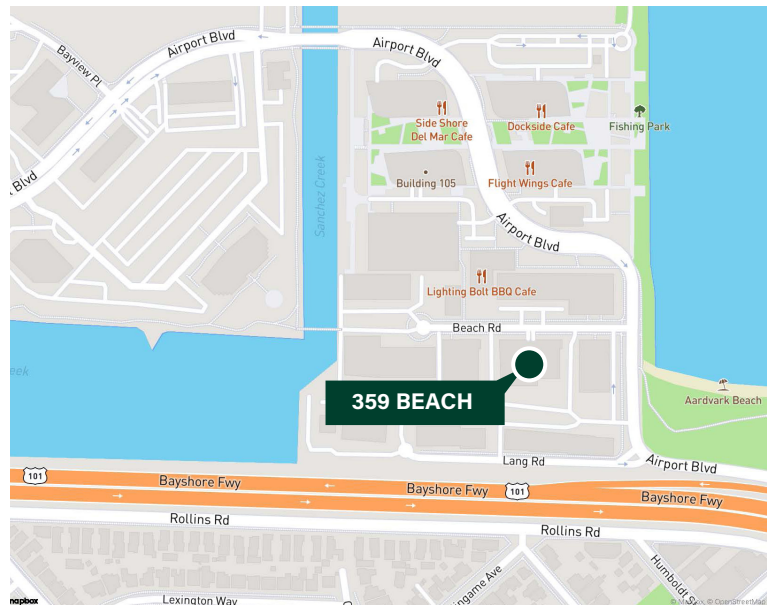
- Warehouse space with 2nd floor office space
- Drainage and Dump sink in warehouse
- Grade-level door with open warehouse
- (2) Offices
- (2) Restrooms
- Excellent location off Peninsula Avenue and Hwy 101
- Rental Rate: \$2.25 / SF / Month NNN
NNN Expenses: \$0.21 / SF / Month
Water: \$50 / Month



Contact Us

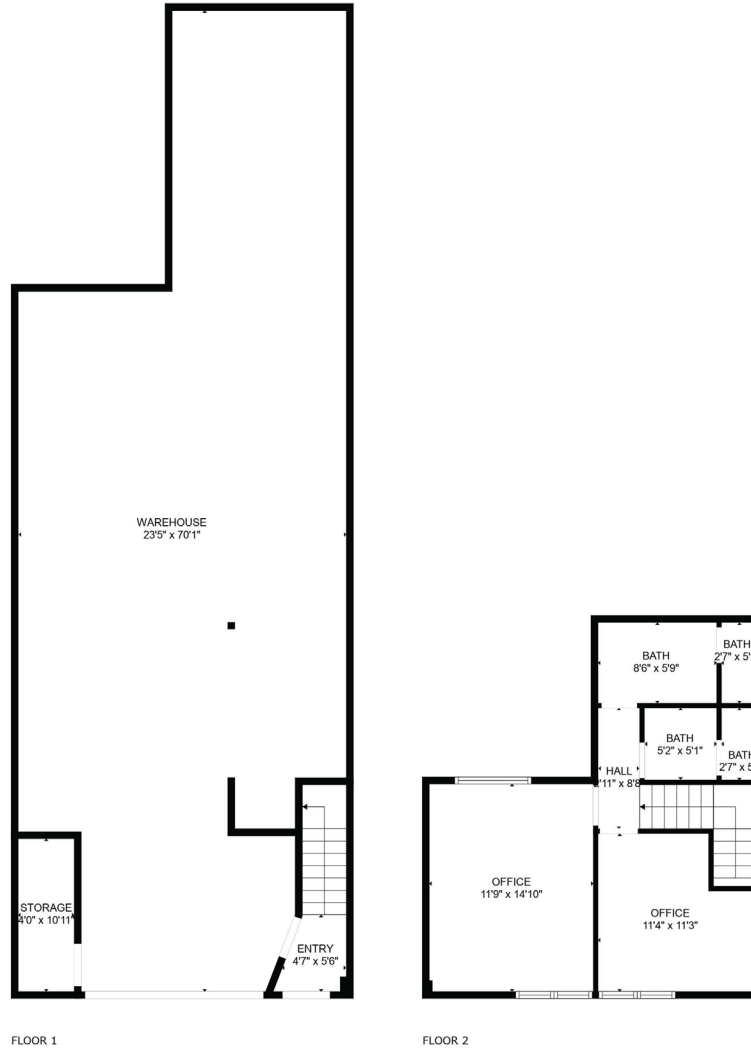
Marshall Hydorn
Executive Vice President
+1 650 577 2990
marshall.hydorn@cbre.com
Lic. 00960660

Matt Murray
Associate
+1 650 577 2934
matt.murray@cbre.com
Lic. 02083830



© 2025 CBRE, Inc. All rights reserved. This information has been obtained from sources believed reliable but has not been verified for accuracy or completeness. CBRE, Inc. makes no guarantee, representation or warranty and accepts no responsibility or liability as to the accuracy, completeness, or reliability of the information contained herein. You should conduct a careful, independent investigation of the property and verify all information. Any reliance on this information is solely at your own risk. CBRE and the CBRE logo are service marks of CBRE, Inc. All other marks displayed on this document are the property of their respective owners, and the use of such marks does not imply any affiliation with or endorsement of CBRE. Photos herein are the property of their respective owners. Use of these images without the express written consent of the owner is prohibited.

Floor Plan (not to scale)



FLOOR PLAN CREATED BY CUBICASA APP. MEASUREMENTS DEEMED HIGHLY RELIABLE BUT NOT GUARANTEED.

Contact Us

Marshall Hydorn
Executive Vice President
+1 650 577 2990
marshall.hydorn@cbre.com
Lic. 00960660

Matt Murray
Associate
+1 650 577 2934
matt.murray@cbre.com
Lic. 02083830

359 Beach Road
Burlingame, California

For Lease



Contact Us

Marshall Hydorn
Executive Vice President
+1 650 577 2990
marshall.hydorn@cbre.com
Lic. 00960660

Matt Murray
Associate
+1 650 577 2934
matt.murray@cbre.com
Lic. 02083830