



# SPACE AVAILABLE FOR LEASE



Suite 150,  
260 Power Ct,  
Sanford, FL 32771

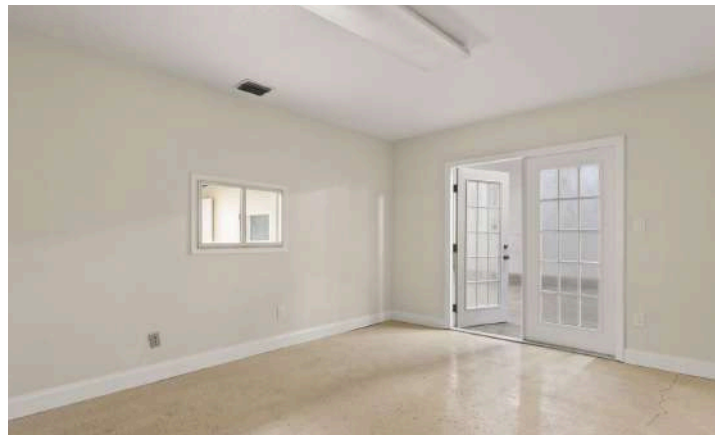
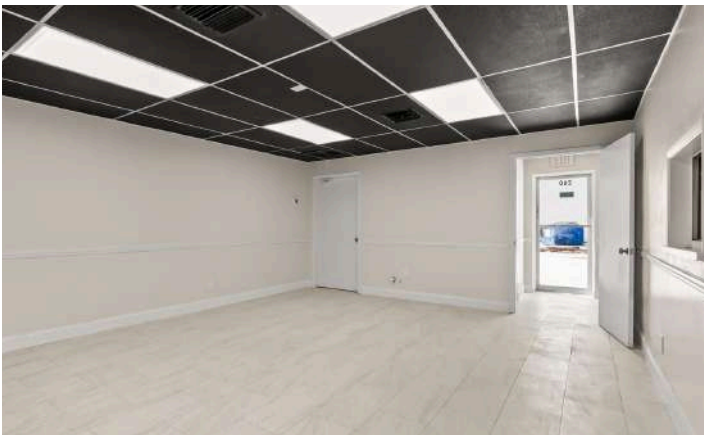
Pricing:  
**\$ 3,750 / Month**  
(\$12.00 / SF + \$4.29 NNN)



ALPHA  
EQUITY  
REALTY & MANAGEMENT

## PROPERTY HIGHLIGHTS:

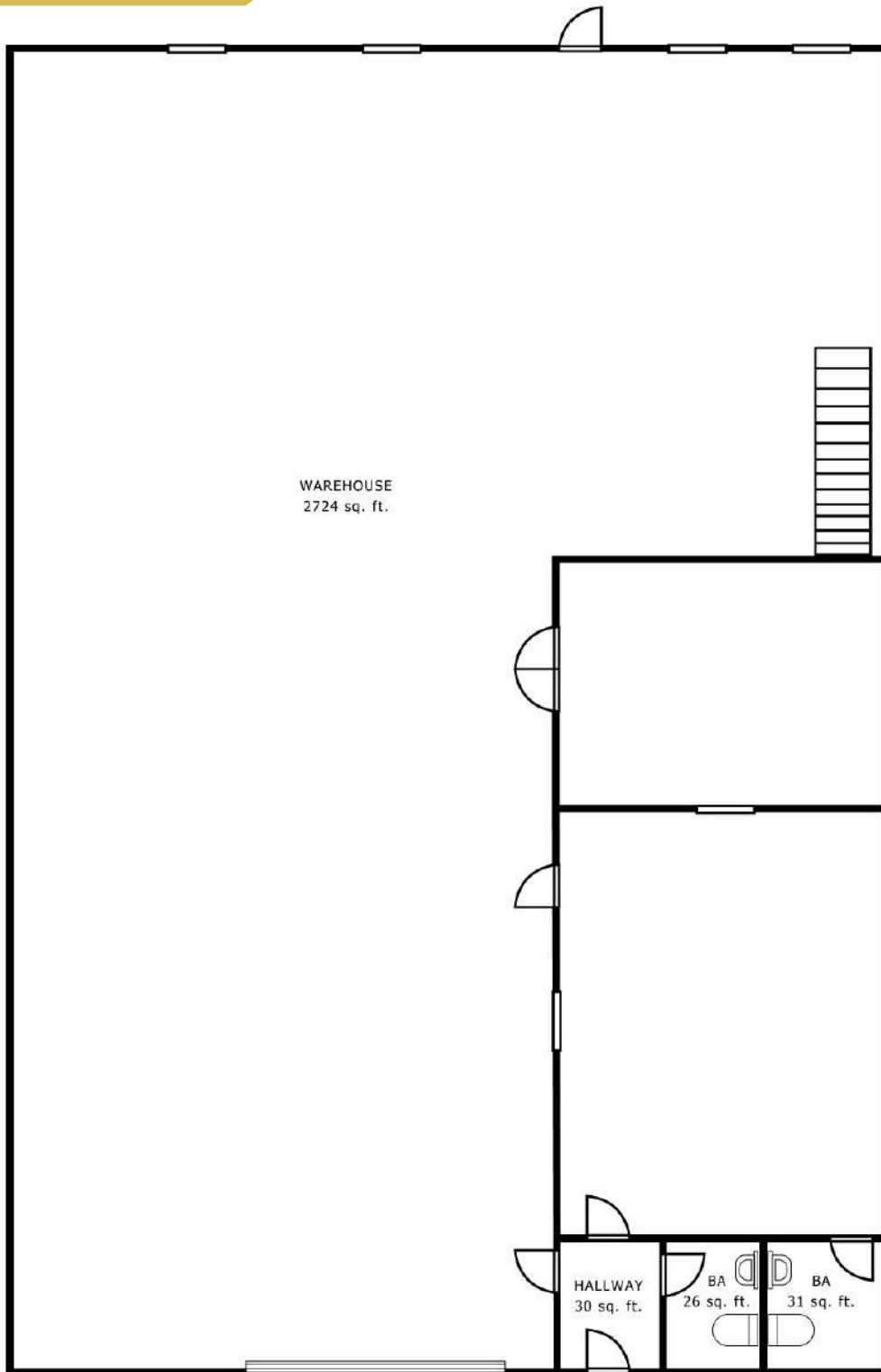
- α ±2,700 SF total (±500 SF office, ±2,200 SF warehouse)
- α 12' x 12' roll-up door | 14-16' ceiling
- α Private restroom | HVAC in office
- α M-1A zoning | 3-phase power available
- α Easy access to I-4, SR 417, and SFB Airport



Mac Jaffer: [516-554-5775](tel:516-554-5775)  
Tati K: [407-668-8534](tel:407-668-8534)  
[leasing@alphaacq.com](mailto:leasing@alphaacq.com)

Suite 150, 260 Power Ct, Sanford,  
FL 32771

Alpha Equity does not represent or warranty the accuracy of the information contained herein. Such information has been given to Alpha Equity by the owner of the property or obtained from other sources deemed reliable. Alpha Equity has no reason to doubt its accuracy, but does not guarantee it. The reviewers(s) of this document is encouraged to perform their own research for their own purposes to verify the dependability of the information being reviewed. All information should be verified by reviewer(s) prior to purchase or lease. Unless otherwise noted, the property is being offered as-is, where is, with all faults.



[Virtual Tour](#)



[Watch Video](#)

Mac Jaffer: [516-554-5775](tel:516-554-5775)  
Tati K: [407-668-8534](tel:407-668-8534)  
[leasing@alphaacq.com](mailto:leasing@alphaacq.com)

Suite 150, 260 Power Ct, Sanford,  
FL 32771

Alpha Equity does not represent or warranty the accuracy of the information contained herein. Such information has been given to Alpha Equity by the owner of the property or obtained from other sources deemed reliable. Alpha Equity has no reason to doubt its accuracy, but does not guarantee it. The reviewers(s) of this document is encouraged to perform their own research for their own purposes to verify the dependability of the information being reviewed. All information should be verified by reviewer(s) prior to purchase or lease. Unless otherwise noted, the property is being offered as-is, where is, with all faults.



**Suite 150, 260 Power Ct,  
Sanford, FL 32771**



**ALPHA  
EQUITY**  
REALTY & MANAGEMENT

**Alpha Equity Realty & Management**  
1525 International Parkway,  
Suite 4071, Lake Mary FL 32746  
[www.recfl.com](http://www.recfl.com)

**MAC JAFFER, CCIM**  
516-554-5775

**TATI K**  
407-668-8534

[leasing@recfl.com](mailto:leasing@recfl.com)

