



Multi-Tenant
Office Building



1000 Ridge Rd

Pottstown, PA 19465

Sarah Finney Miller

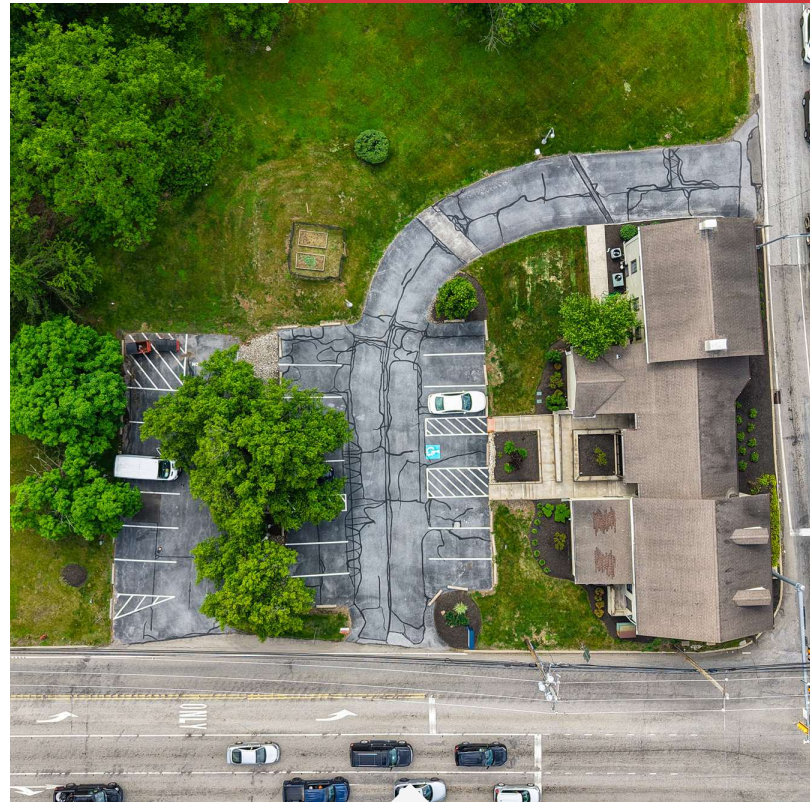
O: 610.871.1719 | C: 610.554.5695
sfinney@naisummit.com

Jennifer Kennedy

O: 610.871.1707 | C: 610.217.9454
jennkennedy@naisummit.com

Madalyn Jukus

O: 610.871.1627 | C: 443.900.6796
mjukus@naisummit.com



1000 Ridge Road consists of a two story, 7,297 SF freestanding retail/office building with a former first-floor bank branch plus general offices on second floor. It sits directly on the four-way signalized intersection of Ridge Road and Pottstown Pike (Route 100), two of the area's preferred commercial corridors, and sees over 19,000 vehicles passing the property each day. The facility is a well-maintained and renovated building, with ramp and small courtyard. Ample onsite parking. The 1.83 acre parcel has two existing means of access.

An enclosed two-story breezeway connects the two professional office spaces and functions as a common lobby. It includes an exposed staircase and separate restrooms. First floor configurations include open area with service counters and multiple private offices. The second floor layouts, accessible by stairwells only, include private offices, open workspace, and breakroom with kitchenette.

This offering includes an additional freestanding shell building on adjacent parcel. The vacant duplex measures approximately 2,079 SF.

- Exceptional visibility on busy signalized intersection
- Building and grounds well-maintained
- Variety of permitted uses including potential for conversion to residential

Location Information

Street Address	1000 Ridge Rd
City, State, Zip	Pottstown, PA 19465
County	Chester

Building Information

Office Building Size	7,297 SF
Vacant Duplex Size	2,092 SF
Building Class	C
Tenancy	Multiple
Number of Floors	2 and 2 1/2
Year Built	1870
Condition	Average

Sale Price

Call For Details

Property Information

Property Type	Office
Property Subtype	Office Building
Zoning	VM - Village Mixed Use
Lot Size	1.06 Acres
Corner Property	Yes

Parking & Transportation

Parking Type	Surface
Number of Parking Spaces	22

Utilities & Amenities

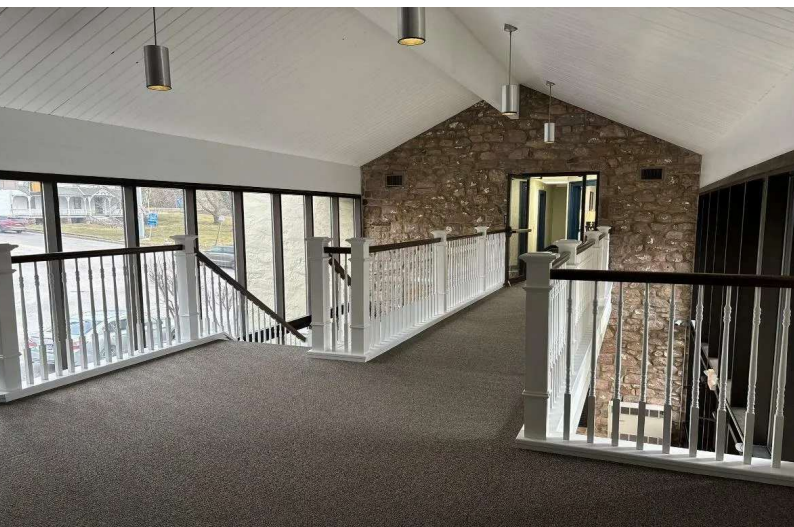
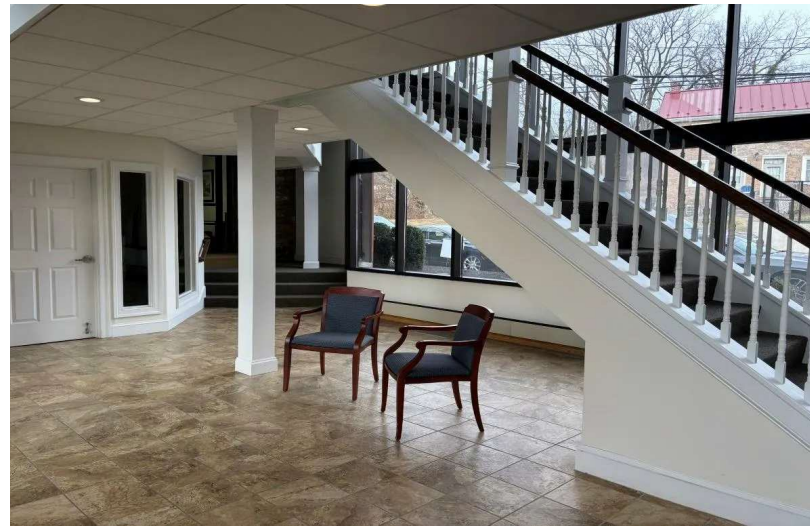
Handicap Access	Yes
-----------------	-----



1000 Ridge Rd
Multi-tenant Office
7,297 +/- SF

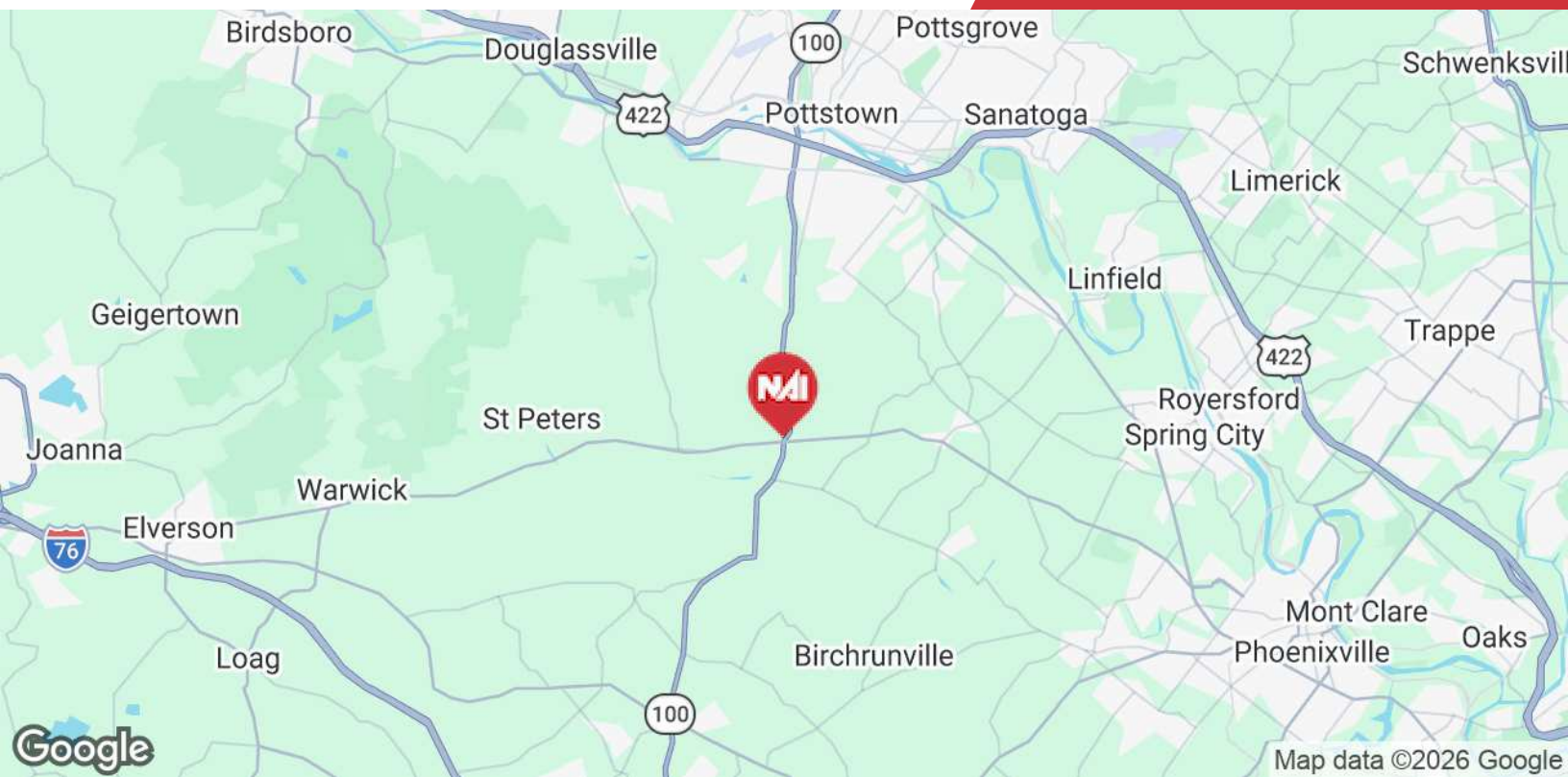
1018 Ridge Rd
Vacant Residential
2,079 +/- SF





The information contained herein has been obtained from sources believed to be reliable; however, NAI Summit makes no representations, warranties, or guarantees, express or implied, as to the accuracy or completeness of this information. All information is subject to errors, omissions, changes in price, rental, or other conditions, prior sale, lease, or financing, or withdrawal without notice. Any reliance on this information is at your own risk, and you are advised to conduct your own independent review and due diligence. NAI Summit and its logo are service marks of Summit Management and Realty Company d/b/a NAI Summit. All other service marks, trademarks, logos, and images are the property of their respective owners and are used herein for informational purposes only. Unauthorized use of images or materials without written permission is strictly prohibited. All rights reserved.

1620 Pond Road, Suite 150
Allentown, PA 18104
610 264 0200 tel
naisummit.com



Column 1	Time	Miles
Route 422	8 min	4.5 miles
I-76	16 min	9.6 miles
I-176	30 min	23.8 miles

Location Advantages

- Strategic access to major transportation routes providing easy access to Pottstown, Phoenixville, Exton, and the broader Philadelphia suburbs.

About NAI Summit

NAI Summit is the greater Lehigh Valley's leading full-service commercial and industrial real estate firm. Our services offered include property sales & leasing, investment sales, distressed properties, consulting, and comprehensive property management and building services.

Sarah Finney Miller
Senior Vice President
C: 610 554 5695
sfinney@naisummit.com

Jennifer Kennedy
Vice President
C: 610 217 9454
jennkennedy@naisummit.com

Madalyn Jukus
Associate
C: 443 900 6796
mjukus@naisummit.com