

Corner Retail for Lease

3295 Dufferin

Located at the Corner of Dufferin St & Rane Ave | Steps to Yorkdale Mall



Corner Retail for Lease

3295 Dufferin

Located at the Corner of Dufferin St & Rane Ave | Steps to Yorkdale Mall

Approximate Sizes: Ground: 4,712 sq. ft.
Basement: 4,712 sq. ft.

Net Rent: Ground: \$45.00 sq. ft.
Basement: \$10.00 sq. ft.

TMI: \$10.00 per sq. ft. (2026 est.)

Available: February 1, 2026

- Incredible corner location at Dufferin Street and Rane Avenue, just south of Yorkdale Mall
- Excellent street presence and frontage onto Dufferin Street with excellent signage opportunities
- Abundance of surface level customer parking
- Neighbouring retailers and traffic drivers include Starbucks, Burrito Boyz, Dollarama, Demetres Desserts, CIBC, The Burger's Priest any many more



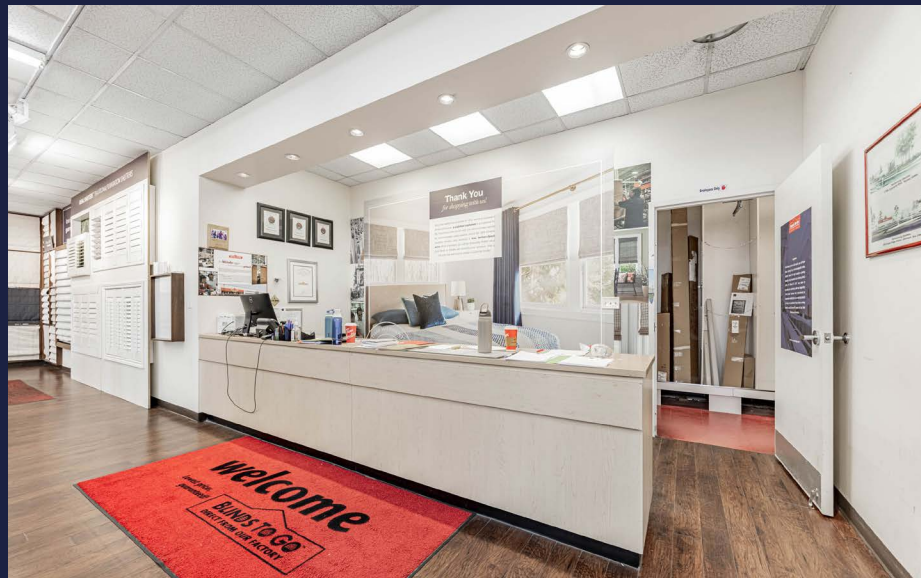
Excellent Branding/Signage Opportunities



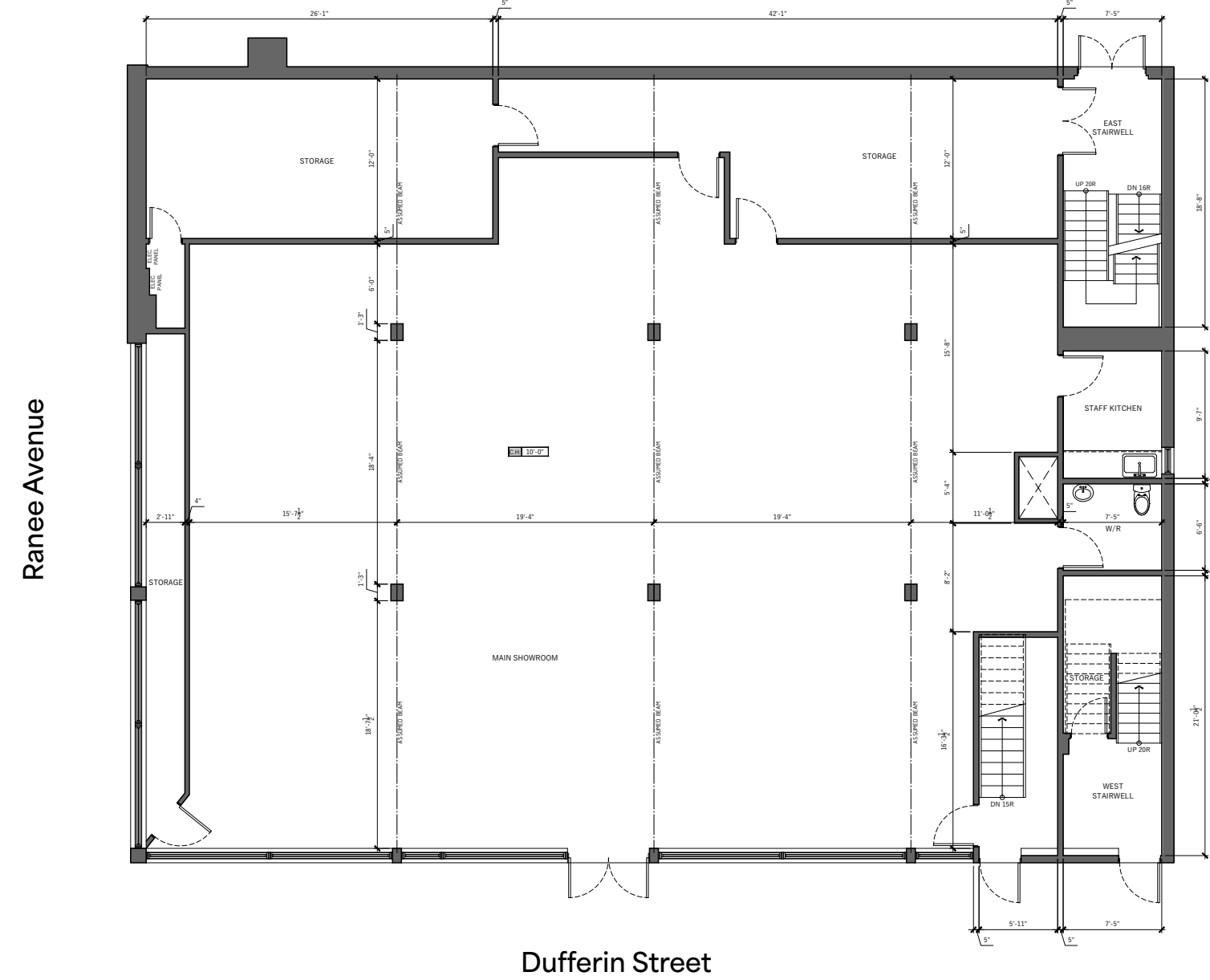
Ample Customer Parking



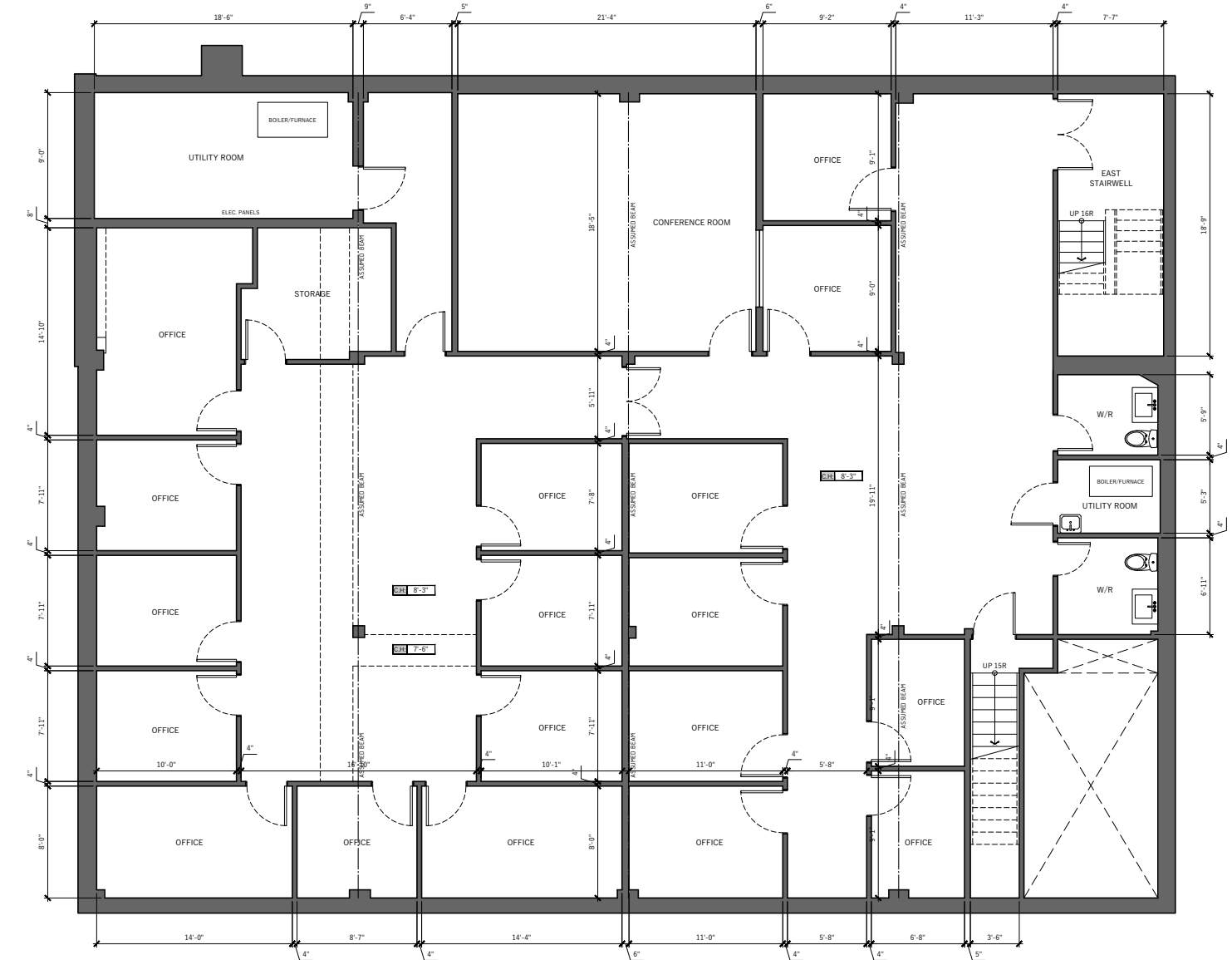
Interior Images



Ground Level



Basement Level



BLINDS TO GO
DIRECT FROM OUR FACTORY

**BLINDS
TO GO**TM

(ecgi)

Investments | Mortgages | Insurance | Tax | Real Estate

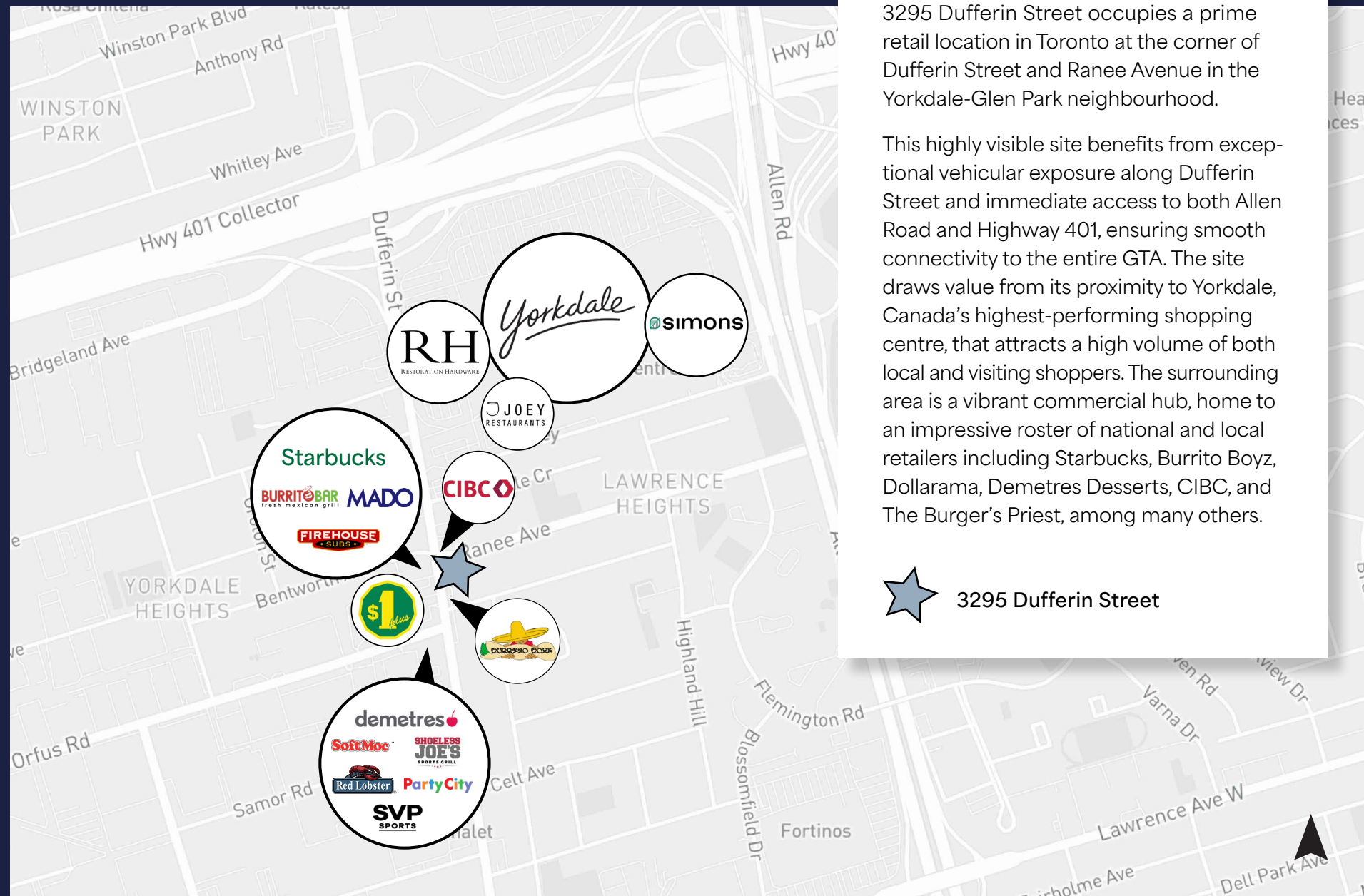
JG **JEROME GOLDSHLAGER**
Barrister & Solicitor, Notary

PARKING AT REAR ←

FREE DELIVERY
FACTORY DIRECT PRICES
LARGEST SELECTION
LIFETIME GUARANTEE

PROUDLY CANADIAN
BUY ONE GET ONE 50% OFF

The Location



3295 Dufferin Street occupies a prime retail location in Toronto at the corner of Dufferin Street and Ranee Avenue in the Yorkdale-Glen Park neighbourhood.

This highly visible site benefits from exceptional vehicular exposure along Dufferin Street and immediate access to both Allen Road and Highway 401, ensuring smooth connectivity to the entire GTA. The site draws value from its proximity to Yorkdale, Canada's highest-performing shopping centre, that attracts a high volume of both local and visiting shoppers. The surrounding area is a vibrant commercial hub, home to an impressive roster of national and local retailers including Starbucks, Burrito Boyz, Dollarama, Demetres Desserts, CIBC, and The Burger's Priest, among many others.

★ 3295 Dufferin Street





Contact

Arlin Markowitz*
Executive Vice President
416 815 2374
arlin.markowitz@cbre.com

Alex Edmison*
Senior Vice President
416 874 7266
alex.edmison@cbre.com

Jackson Turner**
Senior Vice President
416 815 2394
jackson.turner@cbre.com

Emily Everett*
Sales Associate
647 943 4185
emily.everett@cbre.com

*Sales Representative **Broker

CBRE | urban retail team

This disclaimer shall apply to CBRE Limited, Real Estate Brokerage, and to all other divisions of the Corporation; to include all employees and independent contractors ("CBRE"). The information set out herein, including, without limitation, any projections, images, opinions, assumptions and estimates obtained from third parties (the "Information") has not been verified by CBRE, and CBRE does not represent, warrant or guarantee the accuracy, correctness and completeness of the Information. CBRE does not accept or assume any responsibility or liability, direct or consequential, for the Information or the recipient's reliance upon the Information. The recipient of the Information should take such steps as the recipient may deem necessary to verify the Information prior to placing any reliance upon the Information. The Information may change and any property described in the Information may be withdrawn from the market at any time without notice or obligation to the recipient from CBRE. CBRE and the CBRE logo are the service marks of CBRE Limited and/or its affiliated or related companies in other countries. All other marks displayed on this document are the property of their respective owners. All Rights Reserved.