

PTERODACTYL

3540 Hayden Avenue

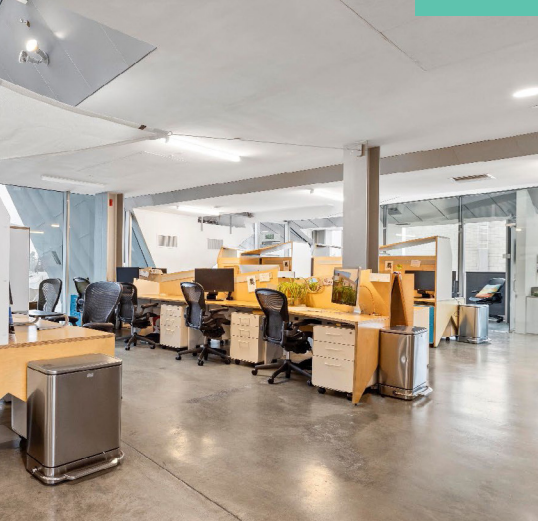
WHERE DESIGN INSPIRES WORK

Located in the dynamic community of the Hayden Tract, Pterodactyl redefines creative office space with bold geometric design and expansive floor-to-ceiling windows. Featuring a mix of private offices and open collaboration areas, this property is designed to inspire the next generation of thought leaders.

With its prime location in Culver City's most dynamic community, Pterodactyl offers tenants unmatched access to top-tier restaurants, amenities, and industry leaders.



AVAILABLE NOW: 16,631 RSF
1ST & 2ND FLOORS

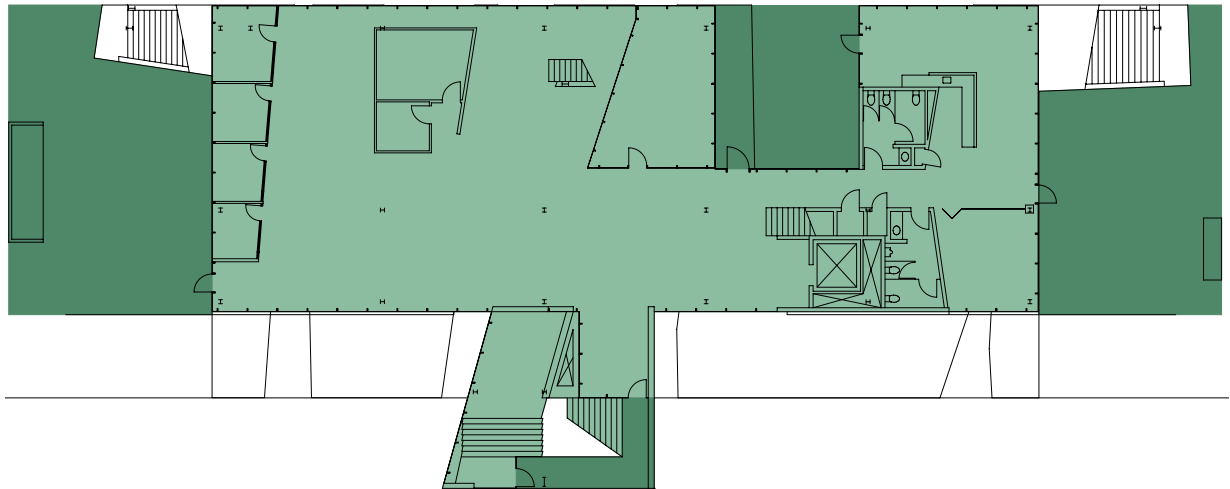


A SPACE WITH VISION

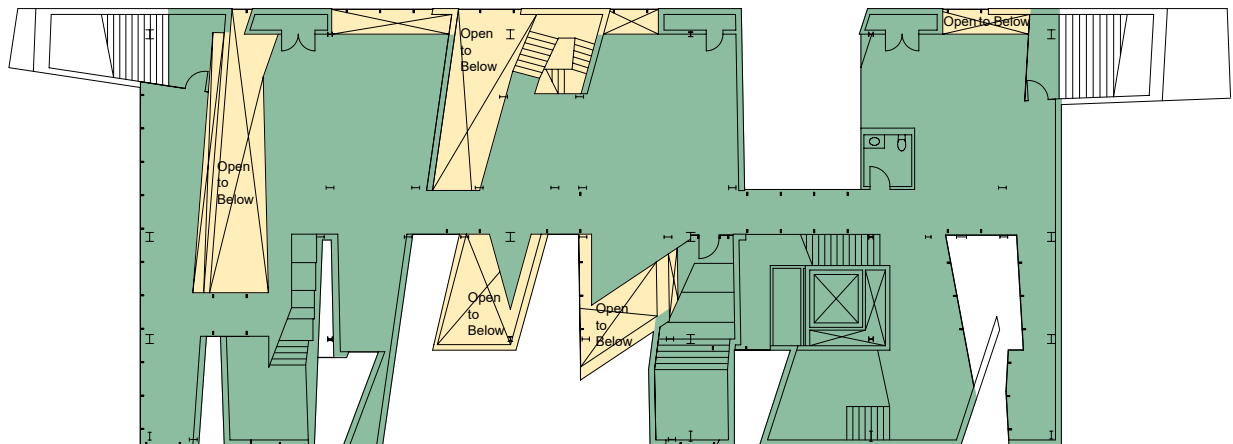
Featuring open layouts, lofty ceilings, and an abundance of natural light, Pterodactyl is a workspace that energizes.

AVAILABLE NOW: 16,631 RSF | 1ST & 2ND FLOORS

LEVEL 1



LEVEL 2



THE FOREFRONT OF LA'S CREATIVE SCENE



Pterodactyl empowers you to thrive in the creative epicenter of Westside LA, surrounded by industry leaders like Amazon, UCLA, and Apple. This dynamic location offers a hub of inspiration, providing endless opportunities to connect and collaborate with top minds in tech, media, and entertainment.



BALLONA CREEK BIKE PATH

METRO EXPO LINE

55 PARKING SPACES

YOUR LINK TO THE CITY

With easy access to I-405 and I-10, Pterodactyl puts you minutes from West Los Angeles, Santa Monica, and Century City, streamlining your daily commute. The nearby Ballona Creek Bike Path, a favorite among walkers, runners, and bikers, offers a scenic route straight to Santa Monica Bay, connecting you to the best of the Westside.



For More Information, Please Contact:

GABRIEL BROWN

+1 310 435 4344
gabe.brown@jll.com
CA Lic. 01441920

JOSH BERNSTEIN

+1 310 795 5947
josh.bernstein@cushwake.com
CA Lic. 01828093

ALEXA DELAHOKE

+1 626 340 5391
alexa.delahooke@cushwake.com
CA Lic. 02091695

©2025 Cushman & Wakefield. All rights reserved. The information contained in this communication is strictly confidential. This information has been obtained from sources believed to be reliable but has not been verified. NO WARRANTY OR REPRESENTATION, EXPRESS OR IMPLIED, IS MADE AS TO THE CONDITION OF THE PROPERTY (OR PROPERTIES) REFERENCED HEREIN OR AS TO THE ACCURACY OR COMPLETENESS OF THE INFORMATION CONTAINED HEREIN, AND SAME IS SUBMITTED SUBJECT TO ERRORS, OMISSIONS, CHANGE OF PRICE, RENTAL OR OTHER CONDITIONS, WITHDRAWAL WITHOUT NOTICE, AND TO ANY SPECIAL LISTING CONDITIONS IMPOSED BY THE PROPERTY OWNER(S). ANY PROJECTIONS, OPINIONS OR ESTIMATES ARE SUBJECT TO UNCERTAINTY AND DO NOT SIGNIFY CURRENT OR FUTURE PROPERTY PERFORMANCE. COE-PM-West-06.9.2025

