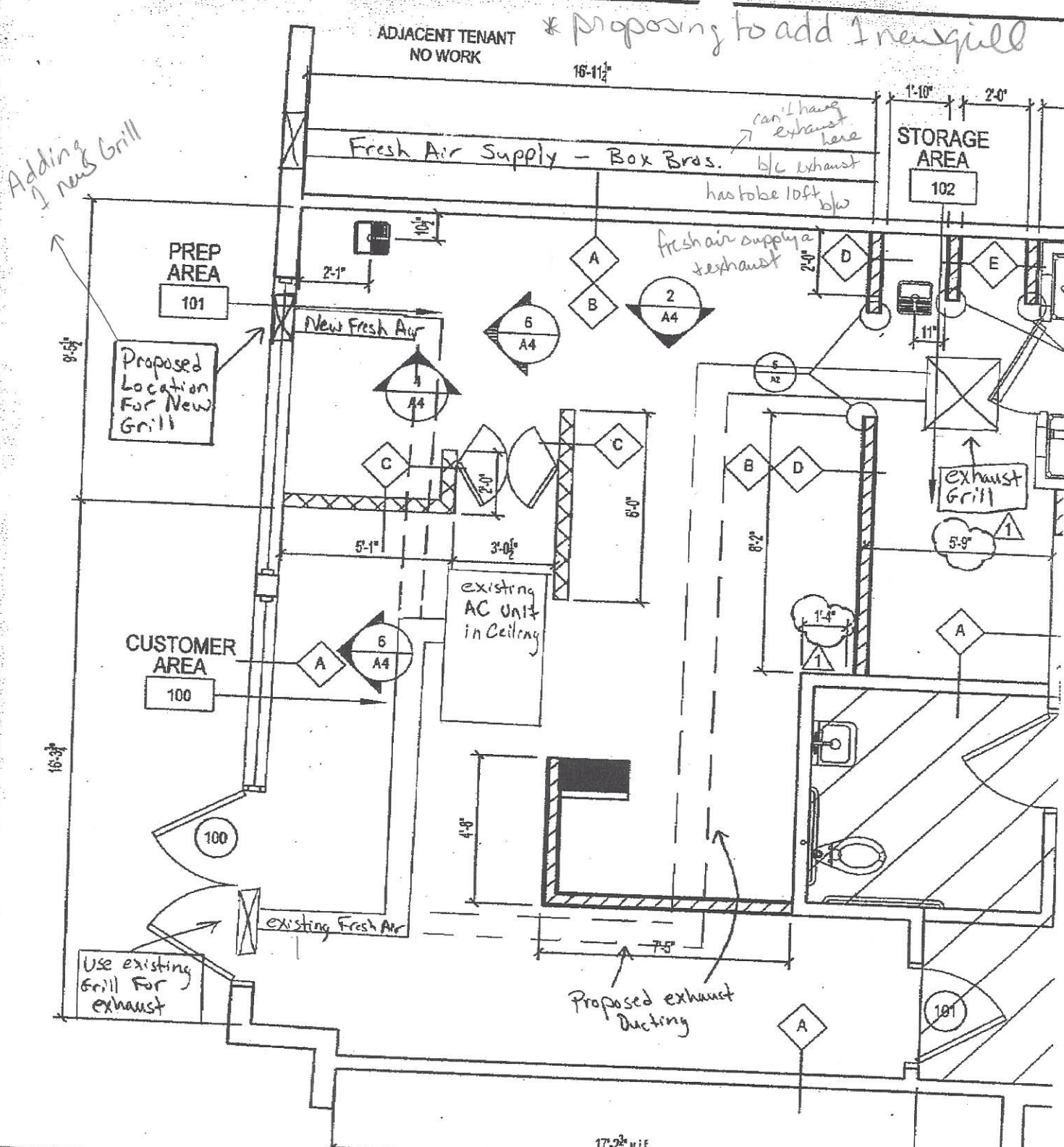


EXISTING PARTITION TO REMAIN
 5/8" GYP. BD. ON 3-5/8" METAL STUDS @ 16"
 O.C. TO BOTTOM OF SUSPENDED CEILING.
 NEW 3'-6" TALL WALL BY MILLWORK
 CONTRACTOR.
 VERIFY ALL DIMENSIONS IN FIELD.

ADJACENT TENANT
 NO WORK

Robeks Juice
 5353 Wilshire Blvd
 Los Angeles CA

ADDITION OF EXHAUST GRILL



EXISTING PARTITION TO REMAIN
 5/8" GYP. BD. ON 3-5/8" METAL STUDS @ 16"
 O.C. TO BOTTOM OF SUSPENDED CEILING.
 NEW 3'-6" TALL WALL BY MILLWORK
 CONTRACTOR.
 VERIFY ALL DIMENSIONS IN FIELD.

Robeks Juice
 5353 Wilshire Blvd
 Los Angeles CA
ADDITION OF EXHAUST GRILL

NOTE:
NOT FOR CONSTRUCTION

Current condenser is on top of walk-in cooler inside store. No ventilation, so needs to be moved.

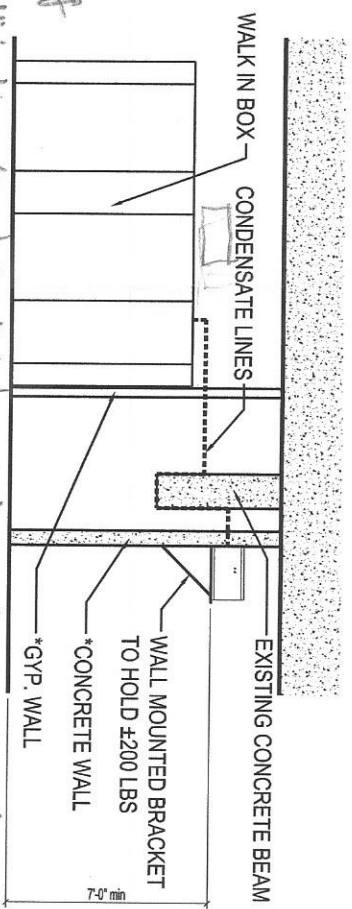
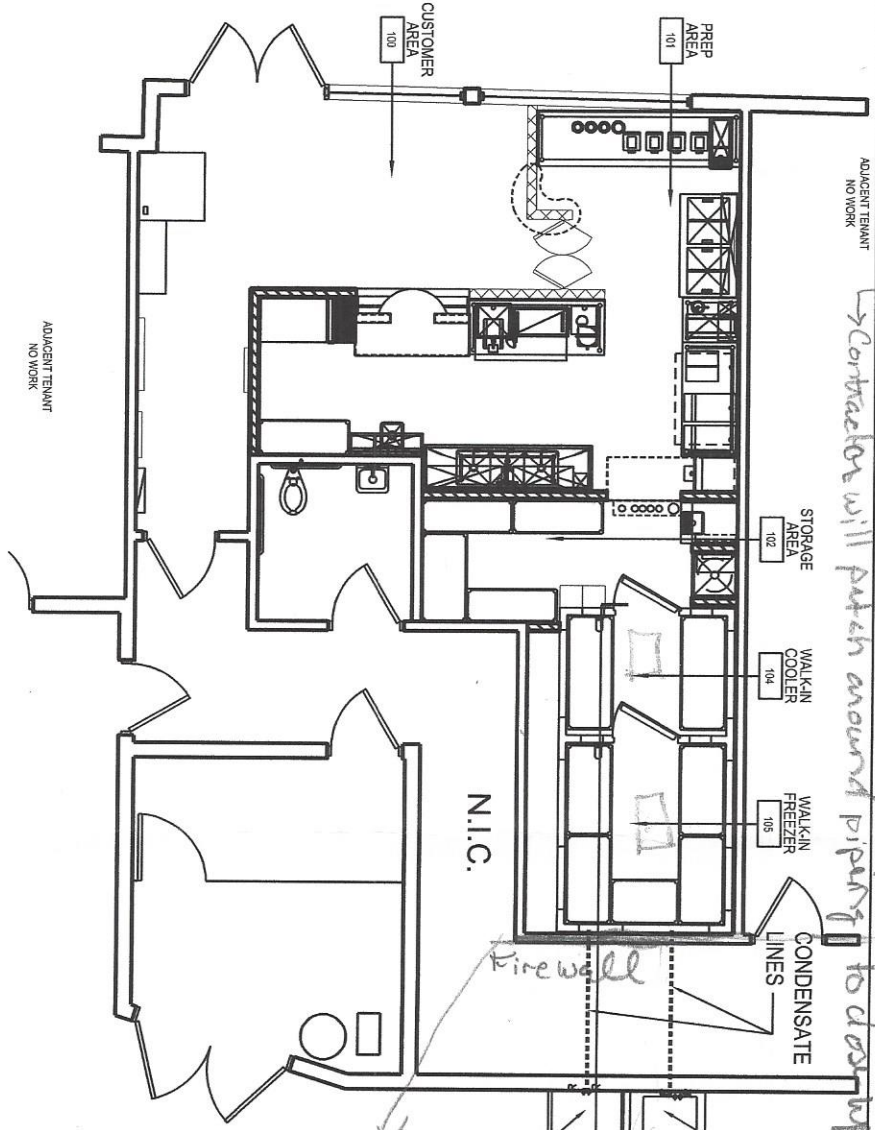
- Add A/C to cool condenser area however, that was not necessary

Need to move condenser out to parking area (like subway has done). Need to drill 3 holes in fire wall @ 4" diameter for pipe to reach condensers in garage.

SECTION 1
1/8"=1'-0"

ADJACENT TENANT
NO WORK

Contractor will patch around piping to drop any on the way through parking



currently these are pipes going through this fire wall, fix!

HEATCRAFT FREEZER CONDENSER
MOH019L6 CF06K6E 1-1/2 HP (200 lbs)

HEATCRAFT COOLER CONDENSER
MOH008D7 RS64C2 3/4 HP (141 lbs)



PLAN
1/8"=1'-0"

* Memory for condenser options and reach

Needs to finish 1/4 and of reach



ROBEKS JUICE
5353 WILSHIRE BLVD
LOS ANGELES, CA

WALK-IN CONDENSER DETAILS

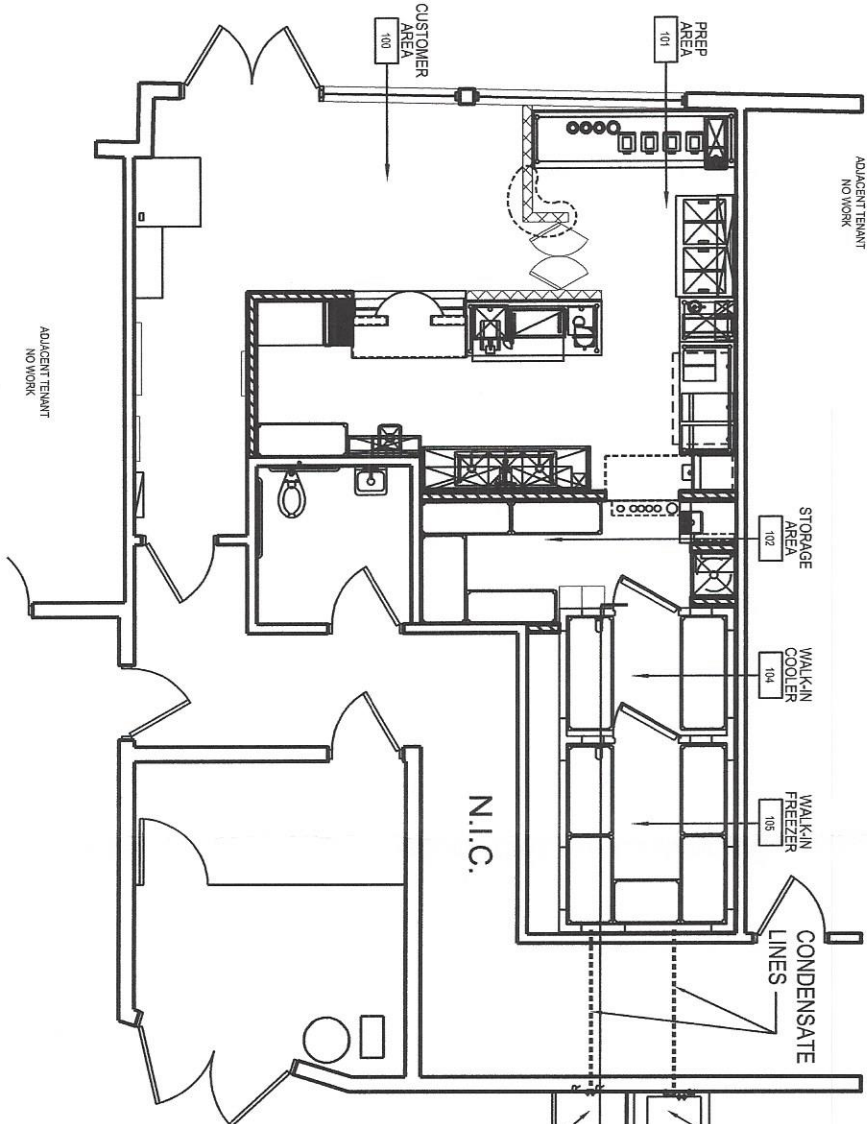
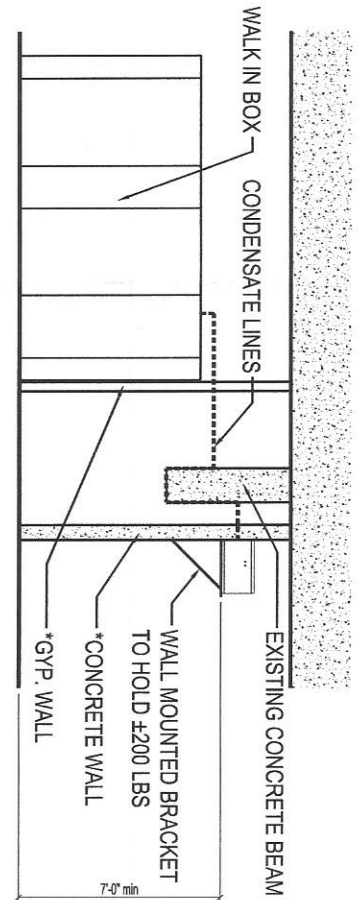


CHIPMAN ADAMS
PACIFIC ARCHITECTURE P.C.
John A. Chipman, Architect
Joseph A. DeFilippis, Architect
80 South Lake Avenue Suite 530
T 626-685-2800 F 626-685-2803
Pasadena, California 91101

Drawn By JBR	Checked By DTR
Scale 1/8"=1'-0"	Date 2-14-07
Job No. 06-7818	Sheet No. DET-1

NOTE:
NOT FOR CONSTRUCTION

SECTION
1/8"=1'-0"



PLAN
1/8"=1'-0"



*ALL PENETRATION SHALL BE SEALED WITH FIREPROOF CAULK

HEATCRAFT FREEZER CONDENSER
MOH019L6 CF06K6E 1-1/2 HP (200 lbs)



HEATCRAFT COOLER CONDENSER
MOH008D7 RS64C2 3/4 HP (141 lbs)

PARKING GARAGE



ROBEKS JUICE
5353 WILSHIRE BLVD
LOS ANGELES, CA

WALK-IN CONDENSER DETAILS

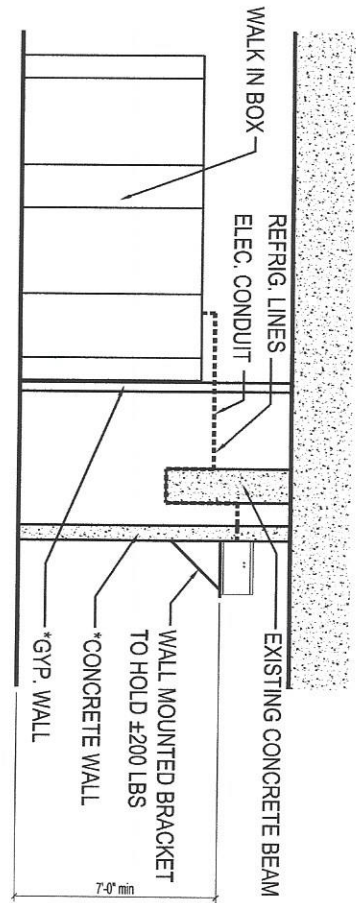


CHIPMAN ADAMS
PACIFIC ARCHITECTURE P.C.
John A. Chipman, Architect
Joseph A. DeFillippis, Architect
80 South Lake Avenue Suite 530
Pasadena, California 91101
T 626-685-2800 F 626-685-2803

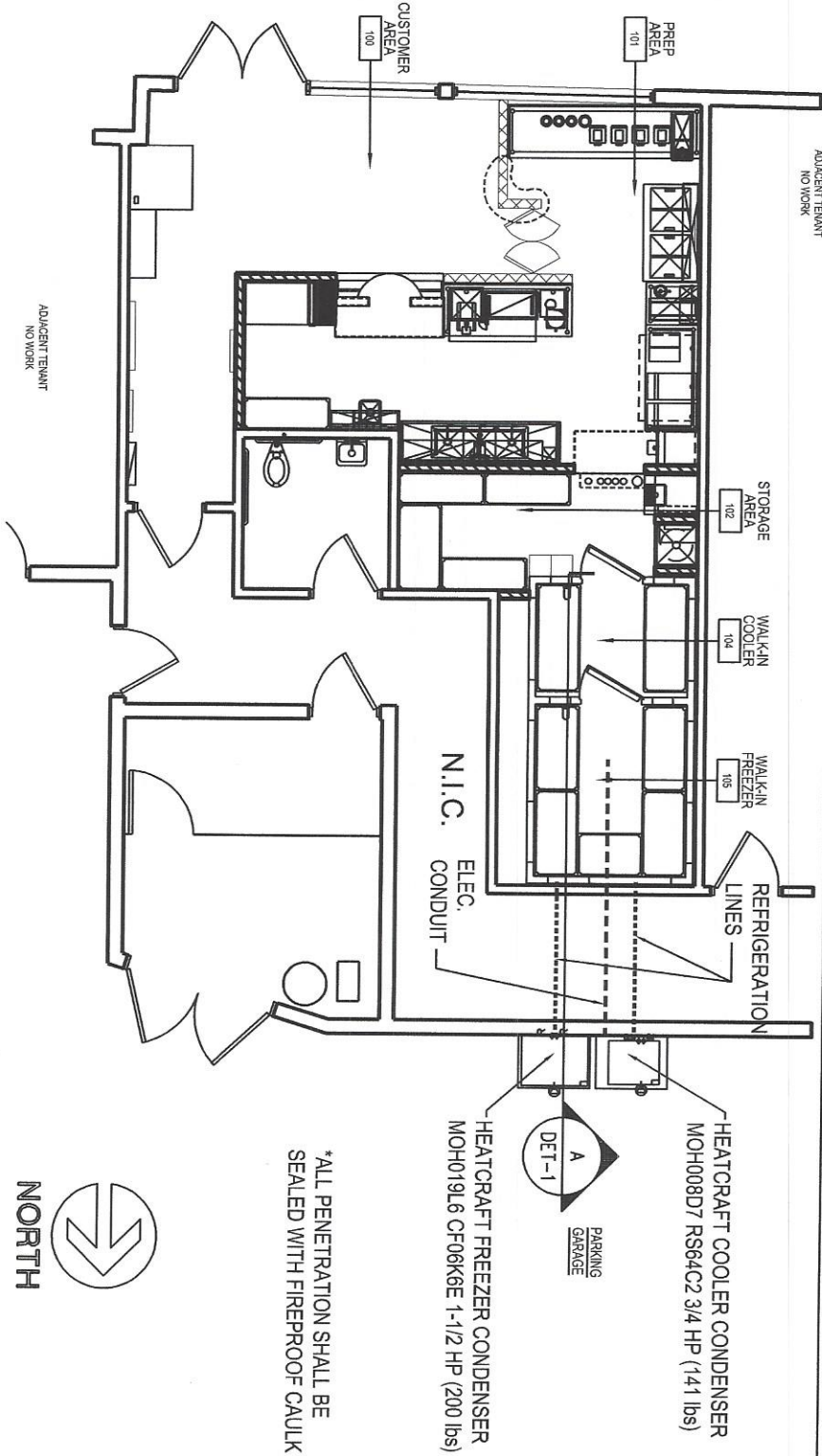
Drawn By JBR	Checked By DTR
Scale 1/8"=1'-0"	Date 2-14-07
Job No. 06-7818	
Sheet No. DET-1	

NOTE:
NOT FOR CONSTRUCTION

1 SECTION
1/8"=1'-0"



B PLAN
1/8"=1'-0"



*ALL PENETRATION SHALL BE SEALED WITH FIREPROOF CAULK



ROBEKS JUICE
5353 WILSHIRE BLVD
LOS ANGELES, CA

WALK-IN CONDENSER DETAILS

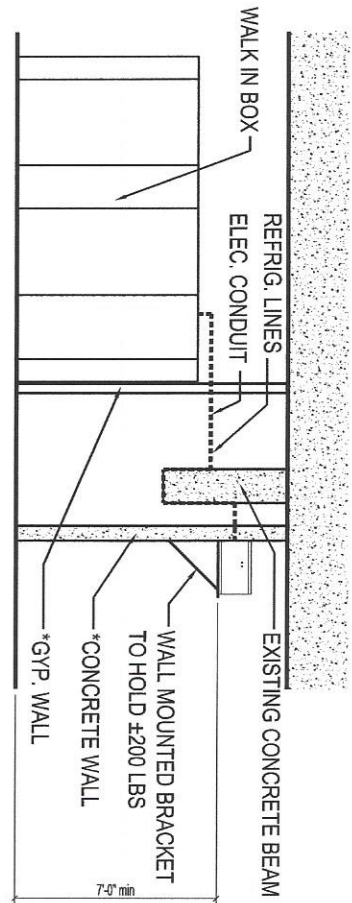


CHIPMAN ADAMS
PACIFIC ARCHITECTURE P.C.
John A. Chipman, Architect
Joseph A. DeFillippis, Architect
80 South Lake Avenue Suite 530
T 626-685-2800 F 626-685-2803
Pasadena, California 91101

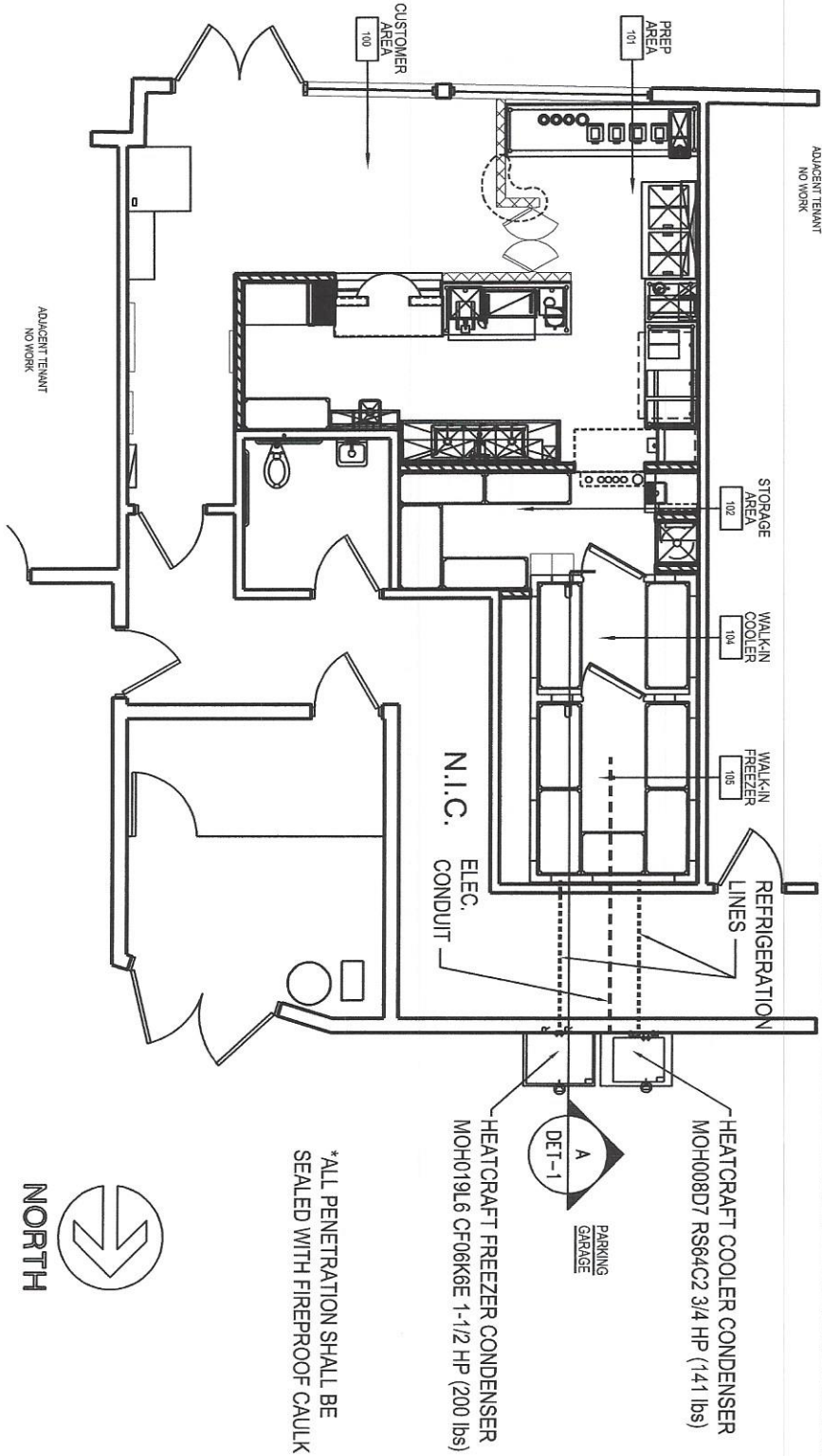
Drawn By JBR	Checked By DTR
Scale 1/8"=1'-0"	Date 2-22-07
Job No. 06-7818	Sheet No. DET-2

NOTE:
NOT FOR CONSTRUCTION

1 SECTION
1/8"=1'-0"



B PLAN
1/8"=1'-0"



*ALL PENETRATION SHALL BE SEALED WITH FIREPROOF CAULK



ROBEKS JUICE
5353 WILSHIRE BLVD
LOS ANGELES, CA

WALK-IN CONDENSER DETAILS



CHIPMAN ADAMS
PACIFIC ARCHITECTURE P.C.
John A. Chipman, Architect
Joseph A. DeFillippis, Architect
80 South Lake Avenue, Suite 530
T 626-685-2800 F 626-685-2803
Pasadena, California 91101

Drawn By JBR	Checked By DTR
Scale 1/8"=1'-0"	Date 2-22-07
Job No. 06-7818	
Sheet No. DET-2	

