

WINDSOR CROSSING PREMIUM OUTLET MALL

1555 TALBOT ROAD, WINDSOR, ON



**VARIOUS RETAIL SPACES FOR LEASE
UP TO 14,667 SF AVAILABLE**

AVAILABLE RETAIL UNITS:

- UNIT 120: 2,702 SF (ADJACENT TO ROOTS)
- UNIT 407: 5,436 SF (ACROSS FROM UNDER ARMOUR)
- UNIT 502: 1,492 SF (ADJACENT TO COLUMBIA)
- UNIT 507: 1,429 SF (ADJACENT TO BLUENOTES)
- UNIT 640: 2,850 SF (ADJACENT TO ALDO)
- UNIT 660: 11,177 SF (ADJACENT TO DOLLARAMA)
- UNIT 840: 14,667 SF (ACROSS FROM DOLLARAMA)



JOIN US



WWW.PIVOTALCOMMERCIALREALTY.COM

PROPERTY HIGHLIGHTS

Welcome to **Windsor Crossing Premium Outlet Mall**, a spectacular open-air retail plaza located in a high traffic area in Windsor, Ontario.

This premium outlet mall is located in the commercial corridor of Windsor, ON and is stacked with premium national retailers that include: Under Armour, Tommy Hilfiger, Guess, Roots, Banana Republic, La Vie En Rose, Levi's, Puma, Dollarama, Columbia, Gap, Reitmans and many more.

Also, we have some excellent QSR's, which include: Domino's, Subway, and Church's Chicken.

- Easy access to Highway 401
- Minutes away from St. Clair College Campus
- Minutes away from St. Académie Ste-Cécile International High School

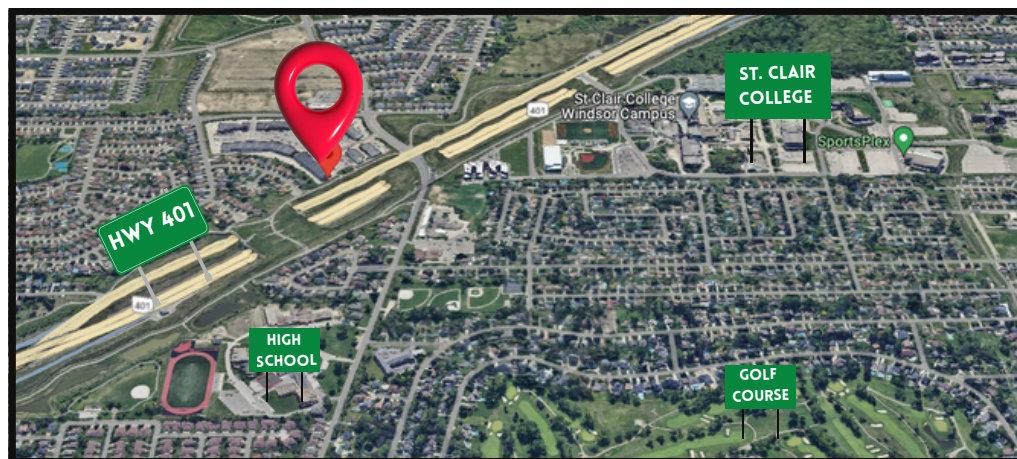
We have various retail spaces **For Lease** that are positioned well for your business to succeed.

Available Retail Units:

- Unit 120: 2,702 SF (adjacent to Roots)
- Unit 407: 5,436 SF (across from Under Armour)
- Unit 502: 1,492 SF (adjacent to Columbia)
- Unit 507: 1,429 SF (adjacent to BlueNotes)
- Unit 640: 2,850 SF (adjacent to Aldo)
- Unit 660: 11,177 SF (adjacent to Dollarama)
- Unit 840: 14,667 SF (across from Dollarama)

Net Rent: Call Broker

TMI: \$9.50 PSF (2025)

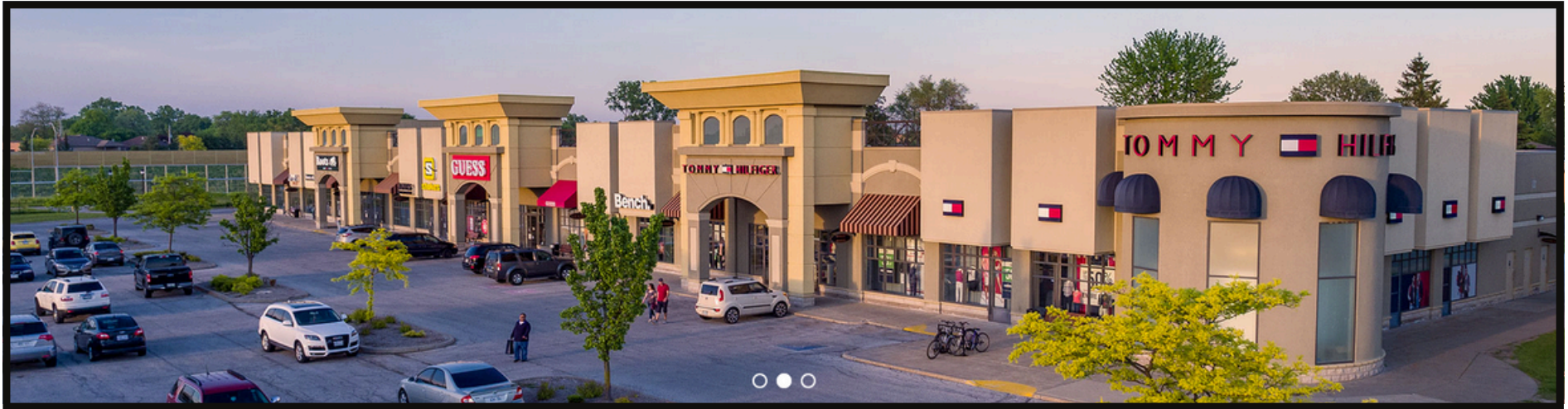


SITE PLAN



JOIN US

GALLERY



Join Us



CONTACT INFORMATION

WINDSOR CROSSING PREMIUM OUTLET MALL



VARIOUS RETAIL SPACES FOR LEASE

CONTACT INFO:

Shawn Abramovitz, BA

Broker of Record & CEO

416.900.3878 Ext: 102

shawn@pivotalcommercialrealty.com



JOIN US

WWW.PIVOTALCOMMERCIALREALTY.COM