

# 145 east 125<sup>TH</sup> st

CBRE



## premises

Floors 5+6

## size

E5 7,540 RSF

E6 7,540 RSF

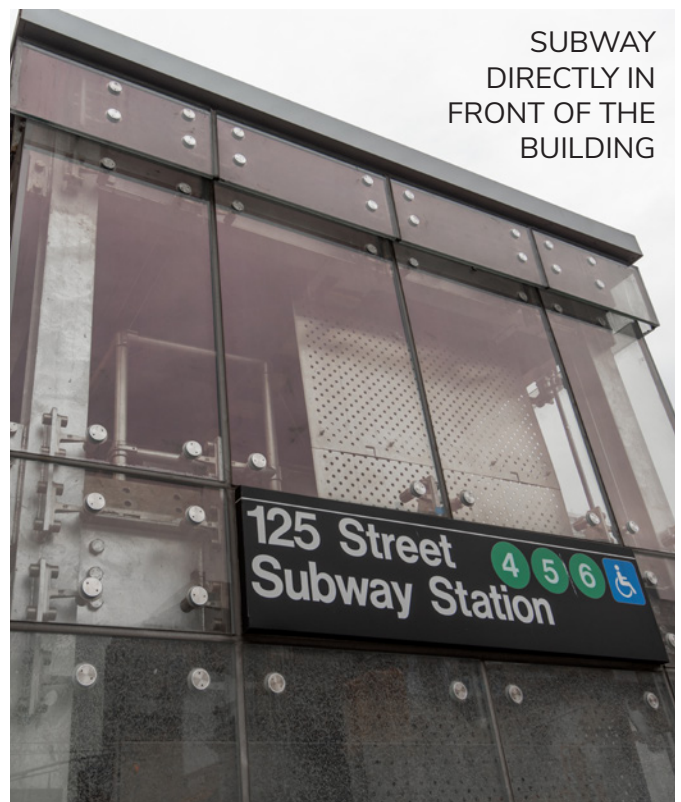
## asking rent

\$48

# 145 east 125<sup>TH</sup> st

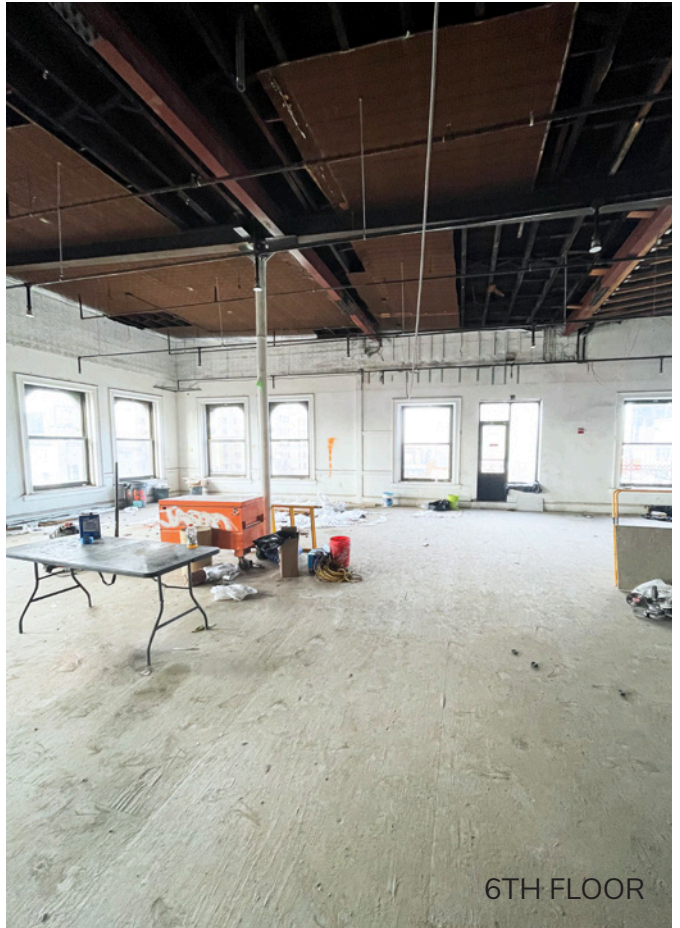
## building | space features

- Lobby renovation underway
- Landlord adding a second elevator
- Landlord to provide a turnkey installation
- Landlord to provide architectural services
- Great light and windows
- Directly on top of the 4, 5, 6 subway station
- One block from the 125th Street Metro North Station
- High Quality ownership
- Next door to the new Bjarke Ingels designed residential building "The Smile"
- Above standard ceiling heights in the building with a 16.2' – 22' arched ceiling on the 6th floor, and 12'5" ceiling height on the 5th floor.
- Fantastic Light and Views





6TH FLOOR



6TH FLOOR



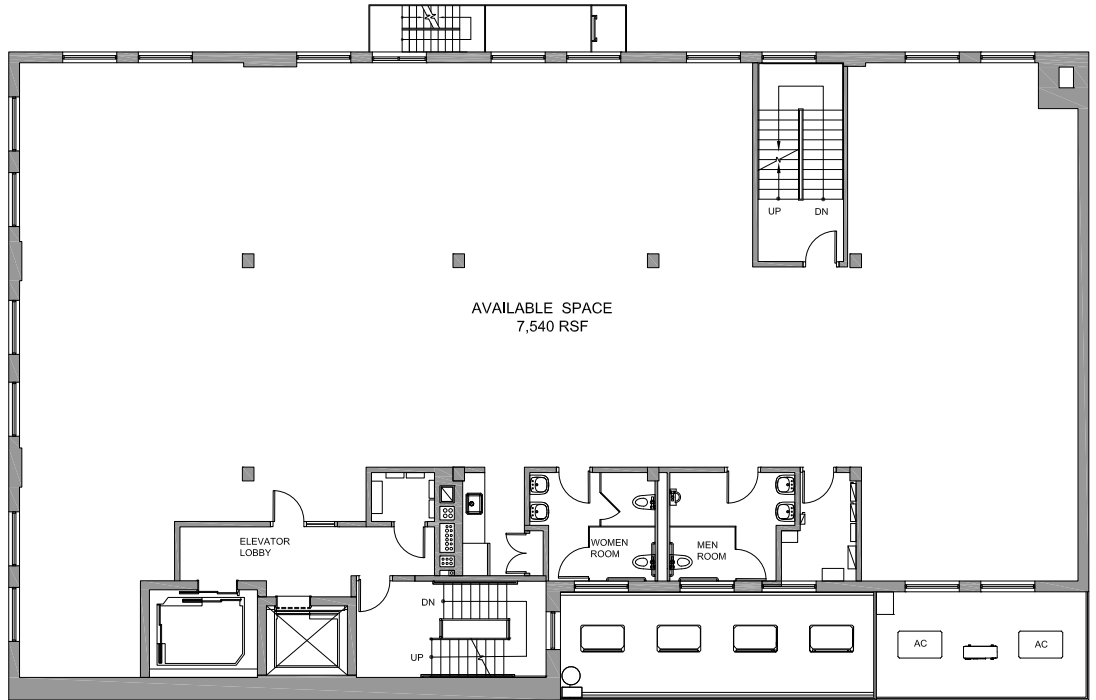
5TH FLOOR



5TH FLOOR

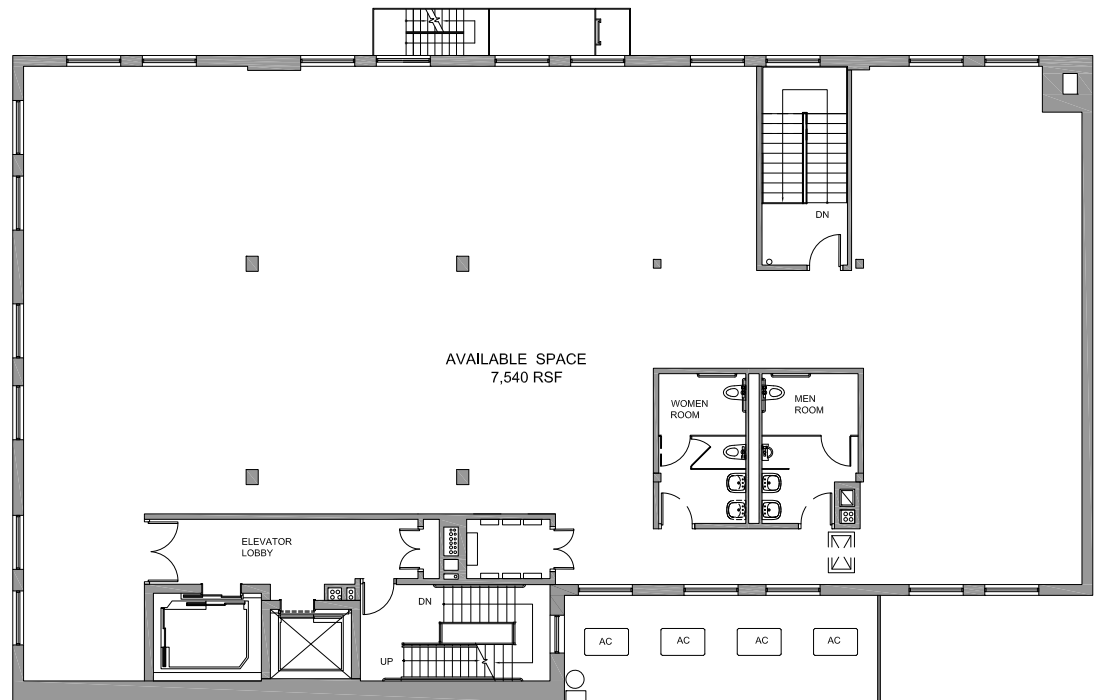
# fifth floor

Core and Shell  
7,450 RSF



# sixth floor

Core and Shell  
7,450 RSF



**145**  
**east**  
**125<sup>TH</sup>**  
**st**

**Paul Walker**  
212 984 7117  
Paul.Walker@cbre.com

**Jordan Donohue**  
212 656 0584  
Jordan.Donohue@cbre.com