

SECOND FLOOR OFFICE: IDEAL FOR CREATIVE OFFICE, SCHOOL, YOGA, ETC.

FOR LEASE
1409
3RD STREET
PROMENADE
Santa Monica, CA
90401



RAFAEL PADILLA
310.395.2663 X102
RAFAEL@PARCOMMERCIAL.COM
LIC# 00960188

GREG ECKHARDT
310.395.2663 X103
GECKO@PARCOMMERCIAL.COM
LIC# 01255469

1409 3rd Street Promenade, Santa Monica, CA 90401

SPACE DETAILS

SIZE: Approximately 3,297 rentable square feet

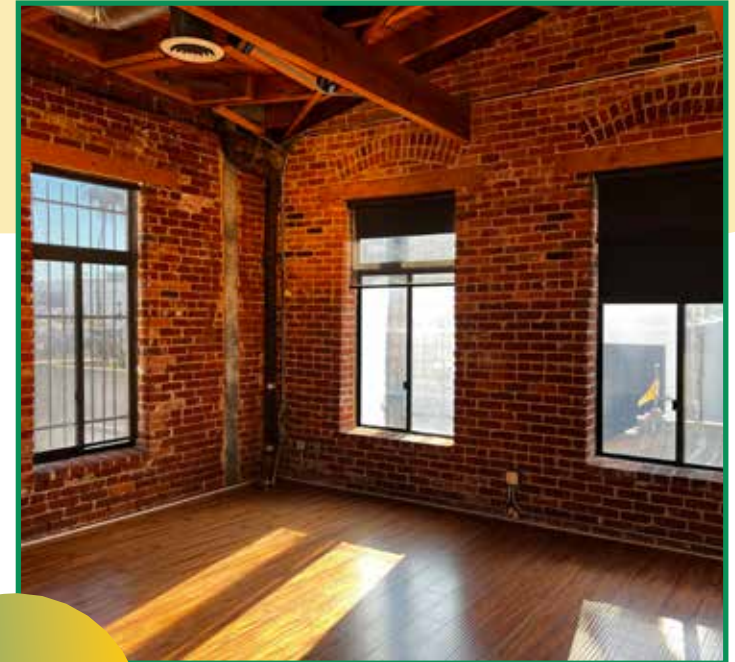
RENT: \$2.50 per square foot per month, MG (Net of utilities and janitorial)

TERM: 1-3 years

PARKING: City structures

AVAILABLE: Immediately

- Wood floors, exposed brick and sky lights
- 2 private bathrooms
- 2nd floor office space with private ground floor entrance
- Private rear patio
- 5-minute walk to Expo Line
- An abundance of walkable amenities
- Independent HVAC
- Abundant plumbing
- Operable windows
- Easy access from the 10 freeway and Pacific Coast Highway



RAFAEL PADILLA

310.395.2663 X102

RAFAEL@PARCOMMERCIAL.COM

LIC# 00960188

GREG ECKHARDT

310.395.2663 X103

GECKO@PARCOMMERCIAL.COM

LIC# 01255469



HOW IT'S LAID OUT

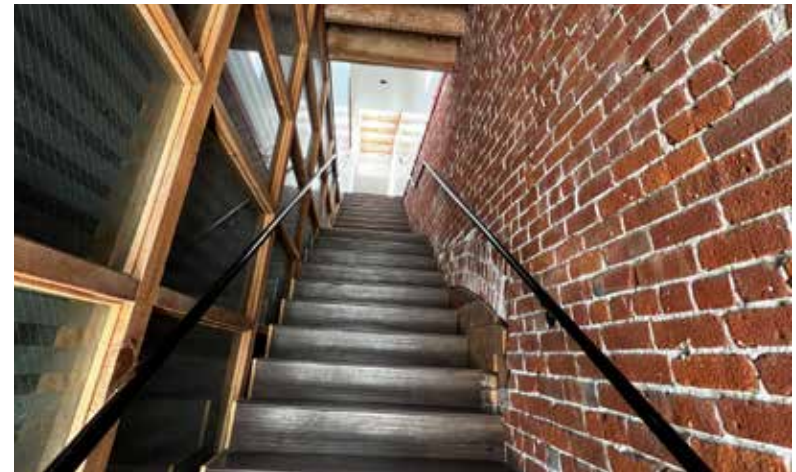


RAFAEL PADILLA
310.395.2663 X102
RAFAEL@PARCOMMERCIAL.COM
LIC# 00960188

GREG ECKHARDT
310.395.2663 X103
GECKO@PARCOMMERCIAL.COM
LIC# 01255469



PROPERTY PHOTOS



RAFAEL PADILLA
310.395.2663 X102
RAFAEL@PARCOMMERCIAL.COM
LIC# 00960188

GREG ECKHARDT
310.395.2663 X103
GECKO@PARCOMMERCIAL.COM
LIC# 01255469



SANTA M O N I C A

is a world-class shopping, dining and entertainment destination just a stone's throw from the Pacific Ocean. Over 24 million visitors a year come from around the globe to visit Santa Monica, named one of National Geographic's top ten beach cities in the world.

**CITY
SITES**

RAFAEL PADILLA

310.395.2663 X102

RAFAEL@PARCOMMERCIAL.COM

LIC# 00960188

GREG ECKHARDT

310.395.2663 X103

GECKO@PARCOMMERCIAL.COM

LIC# 01255469



All information furnished is from sources deemed reliable and which we believe to be correct, but no representation or guarantee is given as to its accuracy and is subject to errors and omissions. All measurements are approximate and have not been verified by Broker. You are advised to conduct an independent investigation to verify all information.

www.parcommercial.com

AREA NEIGHBORS

BY YOUR SIDE

CAFES/RESTAURANTS

- 1 Fig
- 2 Pacific Catch
- 3 Hillstone
- 4 Wally's Wine
- 5 California Pizza Kitchen
- 6 Lotus Dim Sum
- 7 1212 Santa Monica
- 8 Lemonade
- 9 Gyu-Kaku
- 10 Tender Greens
- 11 Uovo
- 12 HiHo Burger
- 13 Cava
- 14 Sugarfish
- 15 The Misfit
- 16 Barney's Beanery
- 17 BOA Steakhouse
- 18 Water Grill
- 19 The Craftsman
- 20 KazuNori
- 21 Meat on Ocean
- 22 Del Frisco's
- 23 True Food
- 24 Bruxie
- 25 BIBIBOP



SHOPPING

- | | | |
|------------|---------------------|-----------------------|
| 26 Apple | 28 Patagonia | 33 Nordstrom |
| 27 Sephora | 29 Lululemon | 34 Santa Monica Place |
| | 30 Anthropologie | |
| | 31 H&M | |
| | 32 Urban Outfitters | |

ARTS & ENTERTAINMENT

- 35 AMC Broadway 4
- 36 AMC Santa Monica 7

HOTELS

- | | |
|---------------------|-------------------|
| 37 Fairmont Miramar | 42 Georgian Hotel |
| 38 The Huntly | 43 Hotel Carmel |
| 39 Shore Hotel | 44 Shangri-La |
| 40 The Pierside | 45 Loews |
| 41 Ocean View Hotel | |

SPAS/BEAUTY

- 46 Exhale LA
- 47 Massage Co
- 48 Ocean Oasis
- 49 Burke Williams
- 50 Tikkun Holistic
- 51 Lloyd's Barbershop
- 52 Salon Republic
- 53 Saulino Smith
- 54 Brambila Salon

BANKS

- 55 Bank of America
- 56 Chase Bank
- 57 Wells Fargo
- 58 Citibank
- 59 Union Bank

FITNESS

- 60 Gold's Gym
- 61 Burn Fitness
- 62 SoulCycle
- 63 Pure Barre
- 64 Pilates Platinum
- 65 Equinox
- 66 Orangetheory
- 67 Hot 8 Yoga

RAFAEL PADILLA
 310.395.2663 X102
 RAFAEL@PARCOMMERCIAL.COM
 LIC# 00960188

GREG ECKHARDT
 310.395.2663 X103
 GECKO@PARCOMMERCIAL.COM
 LIC# 01255469

