

BLUE OAKS TECHNICAL CENTER

9083-9089 FOOTHILLS BLVD. | ROSEVILLE, CA

±3,500 - ±14,903 RSF AVAILABLE



PROPERTY HIGHLIGHTS

BUILDING	SUITE	RSF
9083	SUITE 370	6,802**
9089	SUITE 905	6,852*
9089	SUITE 910	3,500*
9089	SUITE 940	4,551*

* Can be combined for ±14,903 RSF

** Available 10/01/2026

- Covered outdoor seating area
- Convenient access to Highway 65 via Blue Oaks
- Retail amenities close by with easy access to Galleria and The Fountains
- Suite 905, 910 and 940 can be combined to provide ±14,903 RSF

CONTACT INFORMATION

CHRIS SCHWARZE

EXECUTIVE DIRECTOR

916.288.4803

chris.schwarze@cushwake.com

CA License #01291261

CHAD COOK, MCR, SIOR, CCIM

SENIOR DIRECTOR

916.329.1562

chad.cook@cushwake.com

CA License #01711687

CUSHMAN & WAKEFIELD INC.

400 Capitol Mall, Suite 1800,

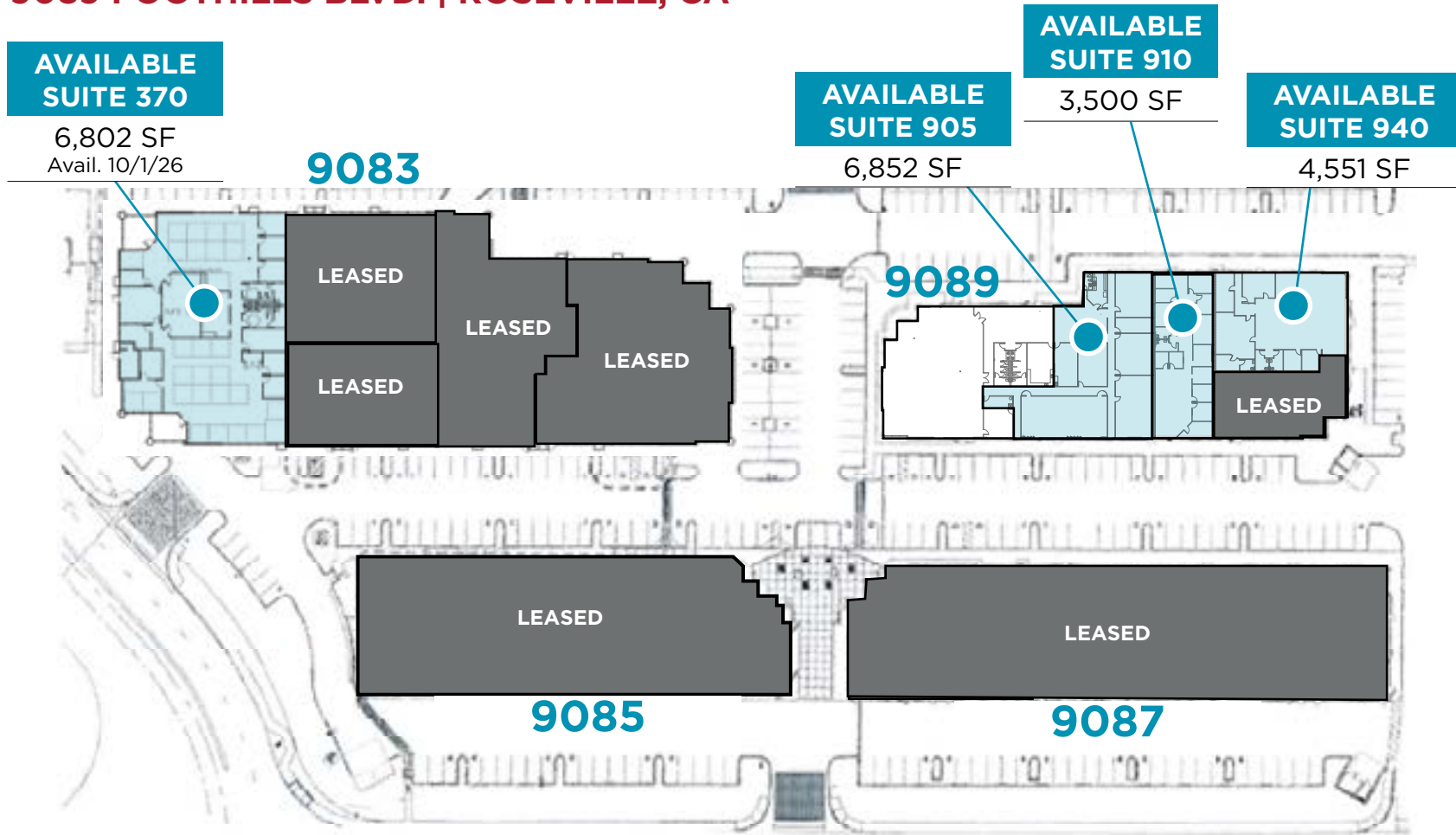
Sacramento, CA 95814

916.288.4800

LIC. #0061633

BLUE OAKS TECHNICAL CENTER

9083-9089 Foothills Blvd. | Roseville, CA



CONTACT INFORMATION

CHRIS SCHWARZE
EXECUTIVE DIRECTOR
916.288.4803
chris.schwarze@cushwake.com
CA License #01291261

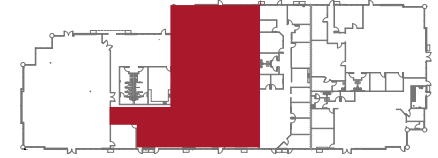
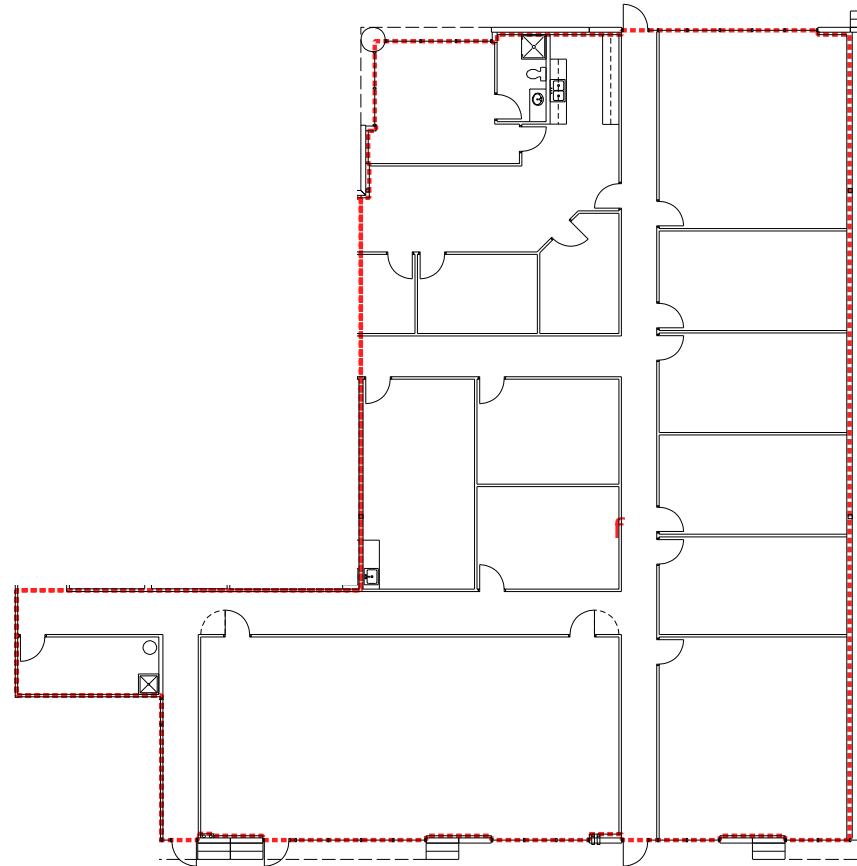
CHAD COOK, MCR, SIOR, CCIM
SENIOR DIRECTOR
916.329.1562
chad.cook@cushwake.com
CA License #01711687

CUSHMAN & WAKEFIELD INC.
400 Capitol Mall, Suite 1800,
Sacramento, CA 95814
916.288.4800
LIC. #0061633

9089

FOOTHILLS BLVD
ROSEVILLE, CALIFORNIA

SUITE 905: ±6,852 RSF



CONTACT INFORMATION

CHRIS SCHWARZE
EXECUTIVE DIRECTOR
916.288.4803
chris.schwarze@cushwake.com
CA License #01291261

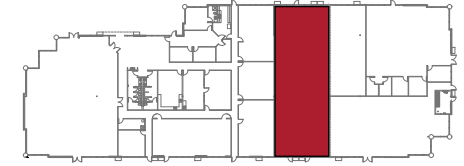
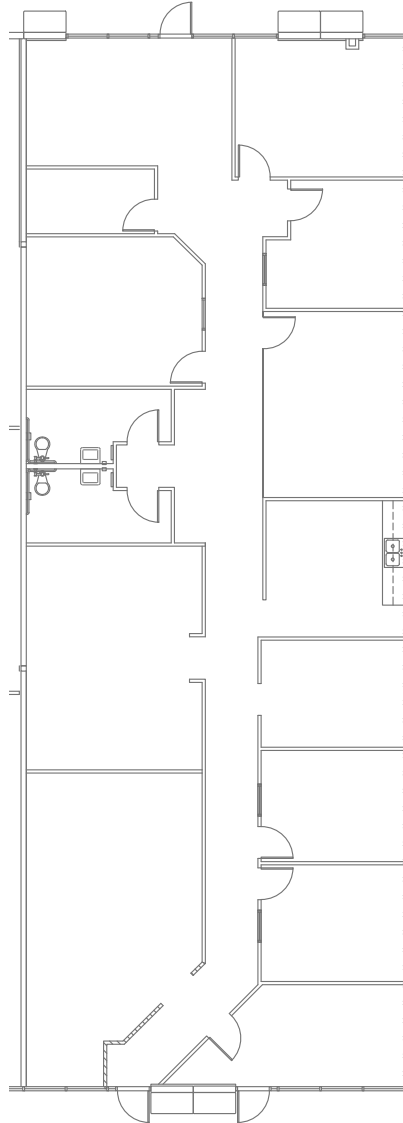
CHAD COOK, MCR, SIOR, CCIM
SENIOR DIRECTOR
916.329.1562
chad.cook@cushwake.com
CA License #01711687

CUSHMAN & WAKEFIELD INC.
400 Capitol Mall, Suite 1800,
Sacramento, CA 95814
916.288.4800
LIC. #0061633

9089

FOOTHILLS BLVD
ROSEVILLE, CALIFORNIA

SUITE 910: ±3,500 RSF



CONTACT INFORMATION

CHRIS SCHWARZE
EXECUTIVE DIRECTOR

916.288.4803
chris.schwarze@cushwake.com
CA License #01291261

CHAD COOK, MCR, SIOR, CCIM
SENIOR DIRECTOR

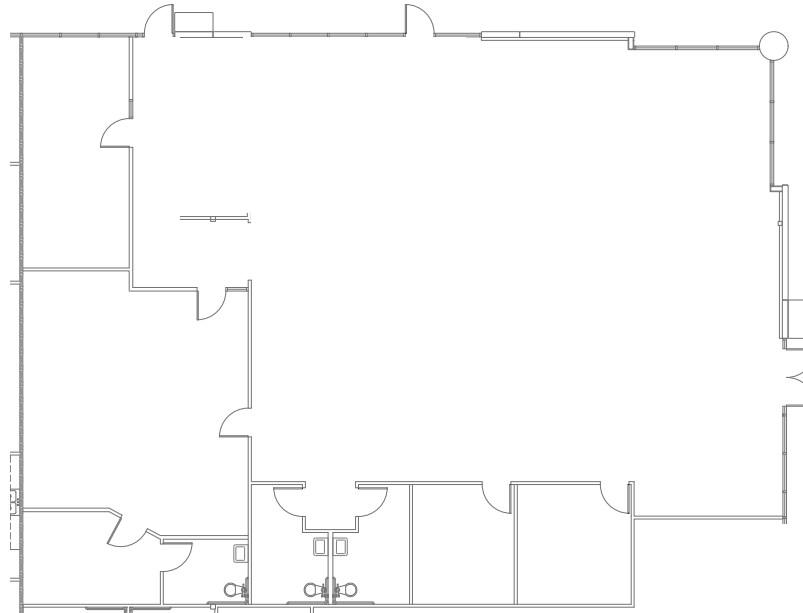
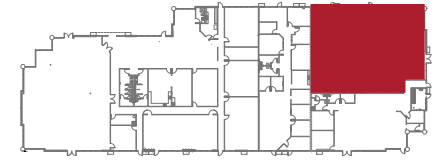
916.329.1562
chad.cook@cushwake.com
CA License #01711687

CUSHMAN & WAKEFIELD INC.
400 Capitol Mall, Suite 1800,
Sacramento, CA 95814
916.288.4800
LIC. #0061633

9089

FOOTHILLS BLVD
ROSEVILLE, CALIFORNIA

SUITE 940: ±4,551 RSF



CONTACT INFORMATION

CHRIS SCHWARZE
EXECUTIVE DIRECTOR

916.288.4803
chris.schwarze@cushwake.com
CA License #01291261

CHAD COOK, MCR, SIOR, CCIM
SENIOR DIRECTOR

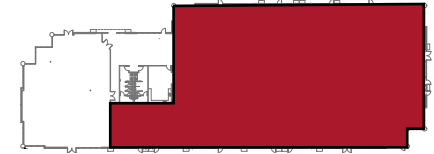
916.329.1562
chad.cook@cushwake.com
CA License #01711687

CUSHMAN & WAKEFIELD INC.
400 Capitol Mall, Suite 1800,
Sacramento, CA 95814
916.288.4800
LIC. #0061633

9089

FOOTHILLS BLVD
ROSEVILLE, CALIFORNIA

SUITE 905 - 940: ±14,903 RSF



CONTACT INFORMATION

CHRIS SCHWARZE
EXECUTIVE DIRECTOR
916.288.4803
chris.schwarze@cushwake.com
CA License #01291261

CHAD COOK, MCR, SIOR, CCIM
SENIOR DIRECTOR
916.329.1562
chad.cook@cushwake.com
CA License #01711687

CUSHMAN & WAKEFIELD INC.
400 Capitol Mall, Suite 1800,
Sacramento, CA 95814
916.288.4800
LIC. #0061633

BLUE OAKS TECHNICAL CENTER

9083-9089 FOOTHILLS BLVD.

ROSEVILLE, CA

GALLERY



CONTACT INFORMATION

CHRIS SCHWARZE

EXECUTIVE DIRECTOR

916.288.4803

chris.schwarze@cushwake.com

CA License #01291261

CHAD COOK, MCR, SIOR, CCIM

SENIOR DIRECTOR

916.329.1562

chad.cook@cushwake.com

CA License #01711687

CUSHMAN & WAKEFIELD INC.

400 Capitol Mall, Suite 1800,

Sacramento, CA 95814

916.288.4800

LIC. #0061633

BLUE OAKS TECHNICAL CENTER

9083-9089 Foothills Blvd. | ROSEVILLE, CA

LOCATION



[View Site Specific COVID-19 Prevention Plan](#)

CONTACT INFORMATION

CHRIS SCHWARZE
 EXECUTIVE DIRECTOR
 916.288.4803
 chris.schwarze@cushwake.com
 CA License #01291261

CHAD COOK, MCR, SIOR, CCIM
 SENIOR DIRECTOR
 916.329.1562
 chad.cook@cushwake.com
 CA License #01711687

CUSHMAN & WAKEFIELD INC.
 400 Capitol Mall, Suite 1800,
 Sacramento, CA 95814
 916.288.4800
 LIC. #0061633