

12000 BISCAYNE



SUITE 401

+/- 1,444 SQUARE FEET

- Available Now – Renovated New and Modern
- Full-Service Lease Rate: \$45 PSF
- Double-entry doors located in the elevator lobby
- Natural light
- Private waiting/reception area with a glass window
- Four private offices, conference room, open workspace
- Coffee bar (sink and cabinet)
- Convenient parking located to the attached parking garage with direct access to the covered cross-walk on the 4th floor

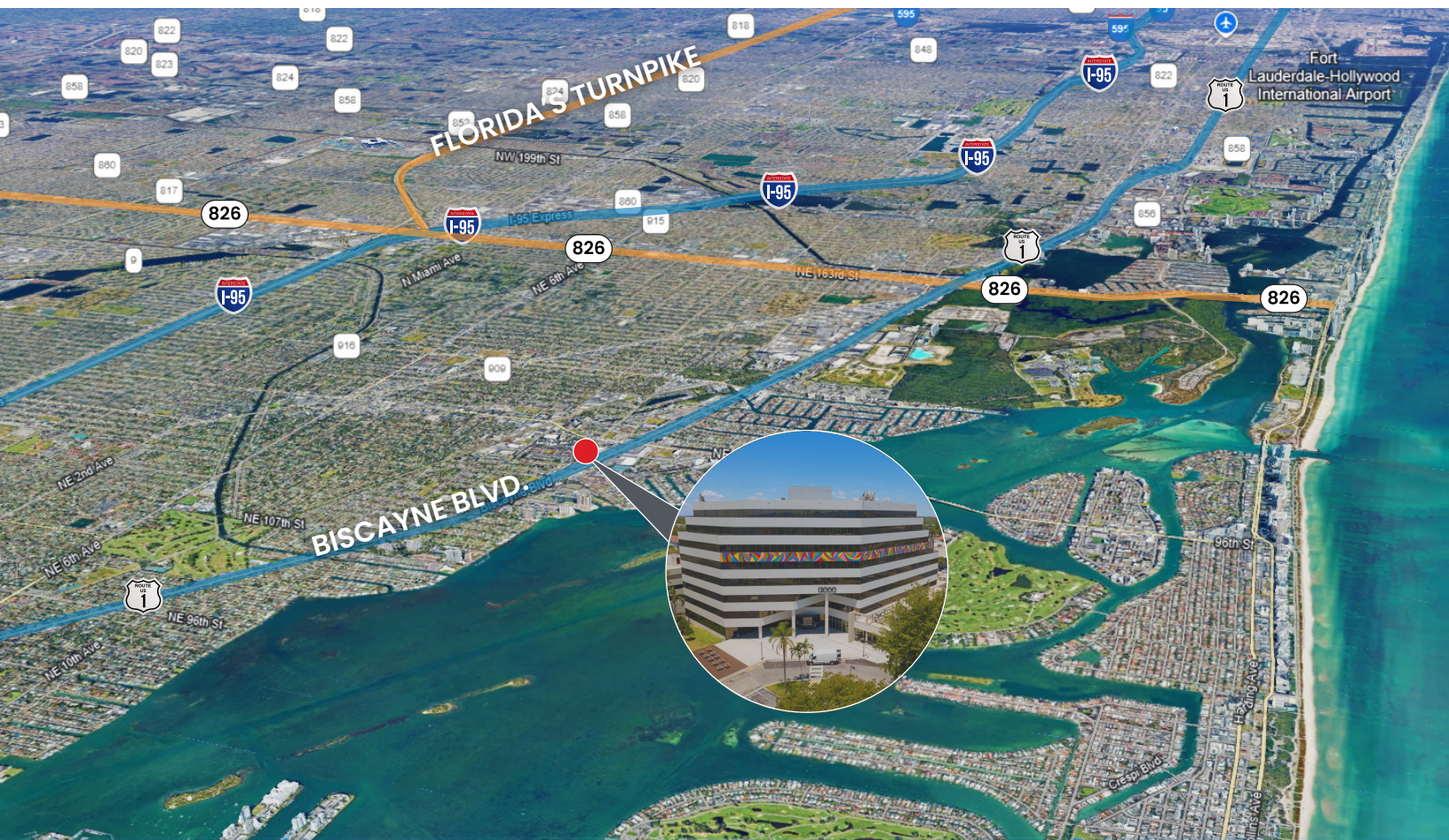
VIDEO OF 12000 BISCAYNE AND SUITE 401



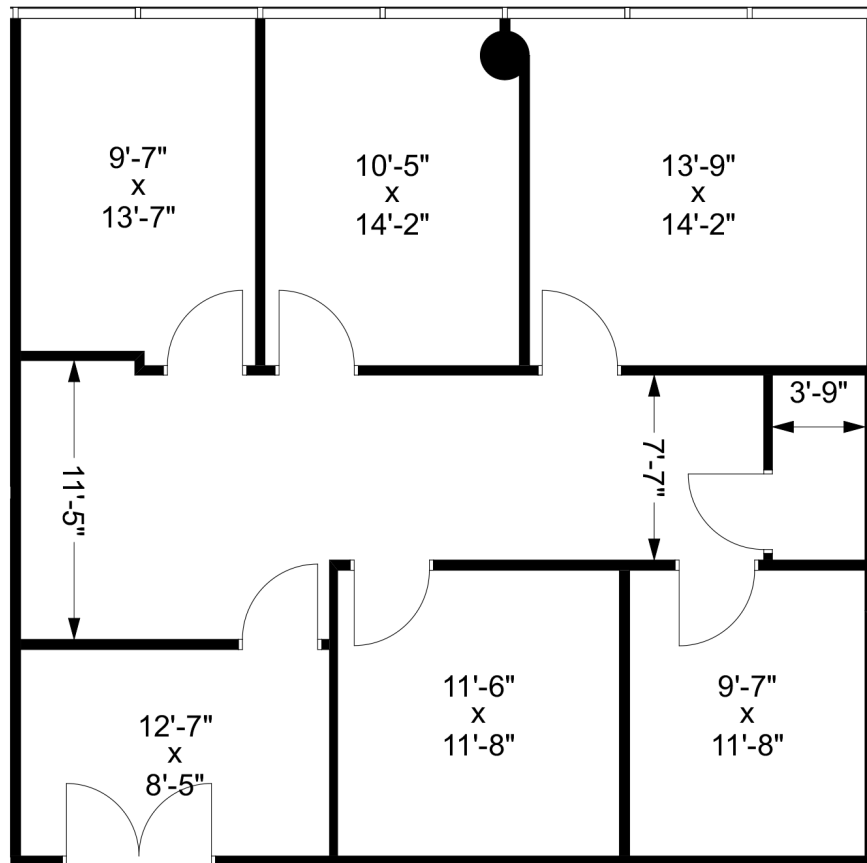
SCAN HERE

12000 BISCAYNE FEATURES

- 12000 Biscayne's high-end retail center with Starbucks plus drive-through and outdoor seating, America's Best Contacts & Eyeglasses, Nail Studio Spa, Sydney Sher Dental, and Bocatto Restaurant with outdoor seating.
- 12000 Biscayne Lobby - JetSet Modern Pilates, QC Kinetix, and more services opening soon.
- Conveniently located on the edge of mid-town Miami just across the bridge to Bal Harbour, Sunny Isles, and Biscayne Bay and close to Aventura/ easy access to Miami's Design District and surrounding areas of Miami-Dade Broward Counties.
- 12000 Biscayne Retail Center connected to the new and magnificent office building lobby with digital tenant directory, new elevators, and security.
- Adjacent multi-level private attached parking garage with direct and convenient access; controlled tenant/employee parking included in the full-service rental rate; ample visitor-paid parking.
- Tenant-employee lounge common area
- Move-in ready Class A office suites available
- Opportunity to custom design and stylize your office suite
- Office suites with panoramic water and city views, private balconies, private restrooms, kitchenettes, additional rear/side private office entry doors.
- Full-service rental rates include weekday janitorial and tenant/employee parking



SUITE 401



VIRTUAL TOUR
SCAN HERE



CLICK. TOUR. LEASE.

SAVITAR

SAVITAR PROPERTIES, INC.

Cynthia Hershkovich, Licensed Real Estate Broker

Office 954.979.6730

Cell 305.697.9390