

5242 OLDE TOWNE ROAD STE 3-4 FOR LEASE

Williamsburg, VA 23188



PROPERTY DESCRIPTION

An exceptional opportunity is now available to lease a 1,600-square-foot storefront retail or office space at Olde Towne Marketplace, strategically located at the high-visibility intersection of Longhill Road and Olde Towne Road. This well-trafficked corner offers strong daily vehicle counts and easy accessibility, making it ideal for businesses seeking both convenience and exposure. With a versatile open layout, ample parking, and prominent signage opportunities, this space is perfectly suited for a wide range of retail or professional office uses. Join a dynamic tenant mix in one of Williamsburg's most established commercial corridors.

PROPERTY HIGHLIGHTS

- GREAT CO-TENANCY IN SURROUNDING CORRIDOR.
- THE CARDINAL RIDGE DEVELOPMENT WILL ADD NEARLY 1,000 RESIDENTIAL UNITS TO THE AREA.
- LOCATED ADJACENT TO THE PRESTIGIOUS FORDS COLONY AND WINDSOR FOREST NEIGHBORHOODS, MULTIPLE APARTMENT COMPLEXES AND RESORT TIMESHARES.

OFFERING SUMMARY

Lease Rate:	\$17.50 SF/yr (MG)
Number of Units:	11
Available SF:	1,600 SF
Lot Size:	61,298 SF
Building Size:	9,000 SF

DEMOGRAPHICS	5 MILES	10 MILES	15 MILES
Total Households	30,054	44,829	72,508
Total Population	74,071	113,076	186,534
Average HH Income	\$114,833	\$123,587	\$113,831

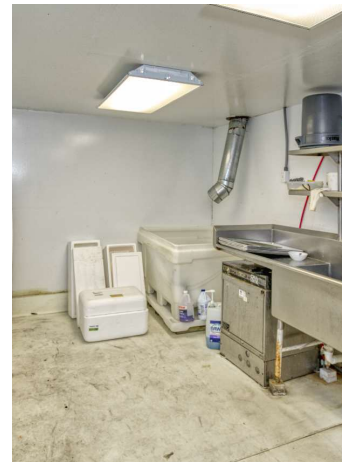
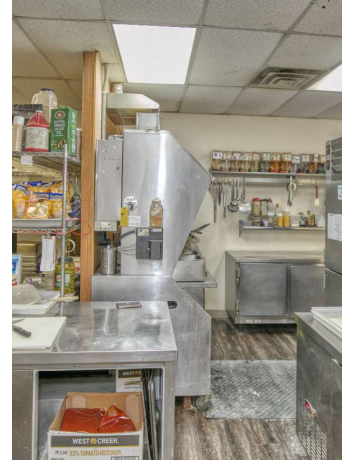
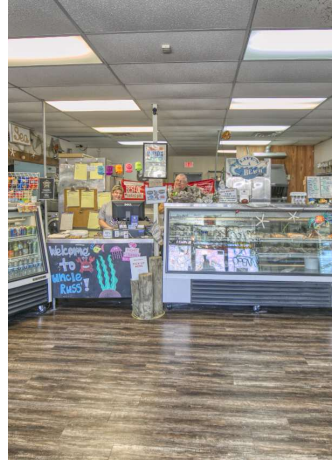
Beth Hinson
(757) 345-5076



**COLDWELL BANKER
COMMERCIAL**
BROOKS REAL ESTATE

5242 OLDE TOWNE ROAD, STE 3-4 FOR LEASE

Williamsburg, VA 23188



Beth Hinson
(757) 345-5076

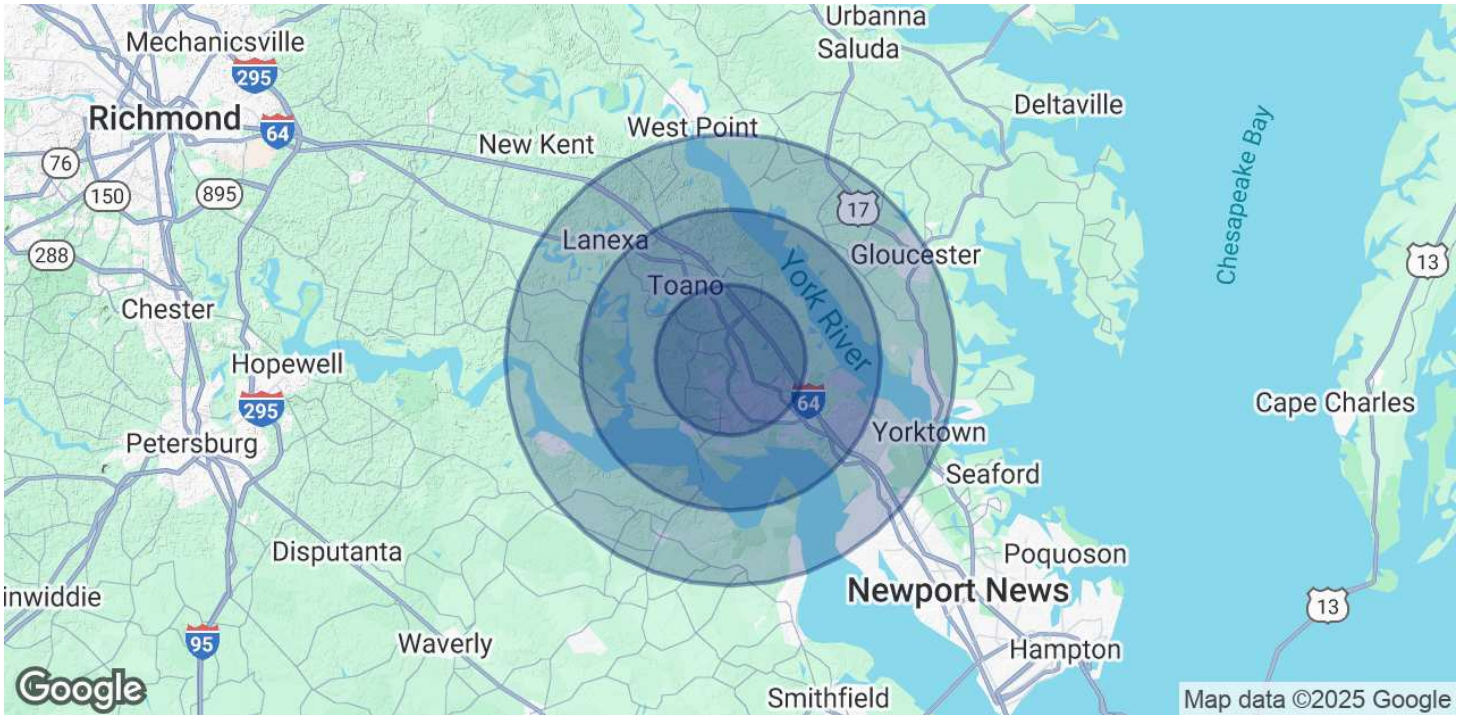


**COLDWELL BANKER
COMMERCIAL**
BROOKS REAL ESTATE

LEASE

5242 OLDE TOWNE RD, SUITE 3-4

5242 Olde Towne Rd, Suite 3-4 Williamsburg, VA 23188



POPULATION	5 MILES	10 MILES	15 MILES
Total Population	74,071	113,076	186,534
Average Age	45	45	42
HOUSEHOLDS & INCOME	5 MILES	10 MILES	15 MILES
Total Households	30,054	44,829	72,508
# of Persons per HH	2.5	2.5	2.6
Average HH Income	\$114,833	\$123,587	\$113,831
Average House Value	\$481,295	\$496,244	\$422,209

Demographics data derived from AlphaMap

Beth Hinson
(757) 345-5076



**COLDWELL BANKER
COMMERCIAL**
BROOKS REAL ESTATE