

# PROMENADE BUSINESS PARK

525 CARDIFF STREET | CORONA, CA 92879

±12,659 SF AVAILABLE FOR LEASE

**DOCK HIGH LOADING  
SHOWROOM SPACE**



 **LEE &  
ASSOCIATES**  
COMMERCIAL REAL ESTATE SERVICES

Lee & Associates Commercial Real Estate  
Services, Inc.- Riverside  
Corp ID# 01048055  
4193 Flat Rock Drive, Suite 100  
Riverside, CA 92505

**LAWRENCE C. NULL, SIOR**  
SENIOR VICE PRESIDENT  
☎ 951.276.3616  
✉ [lnull@leeriverside.com](mailto:lnull@leeriverside.com)  
DRE License #00822133

**JUSTIN NULL, SIOR**  
VICE PRESIDENT  
☎ 951.276.3634  
✉ [jnull@leeriverside.com](mailto:jnull@leeriverside.com)  
DRE License #01899025

# PROMENADE BUSINESS PARK

525 CARDIFF STREET | CORONA, CA 92879

## PROPERTY FEATURES

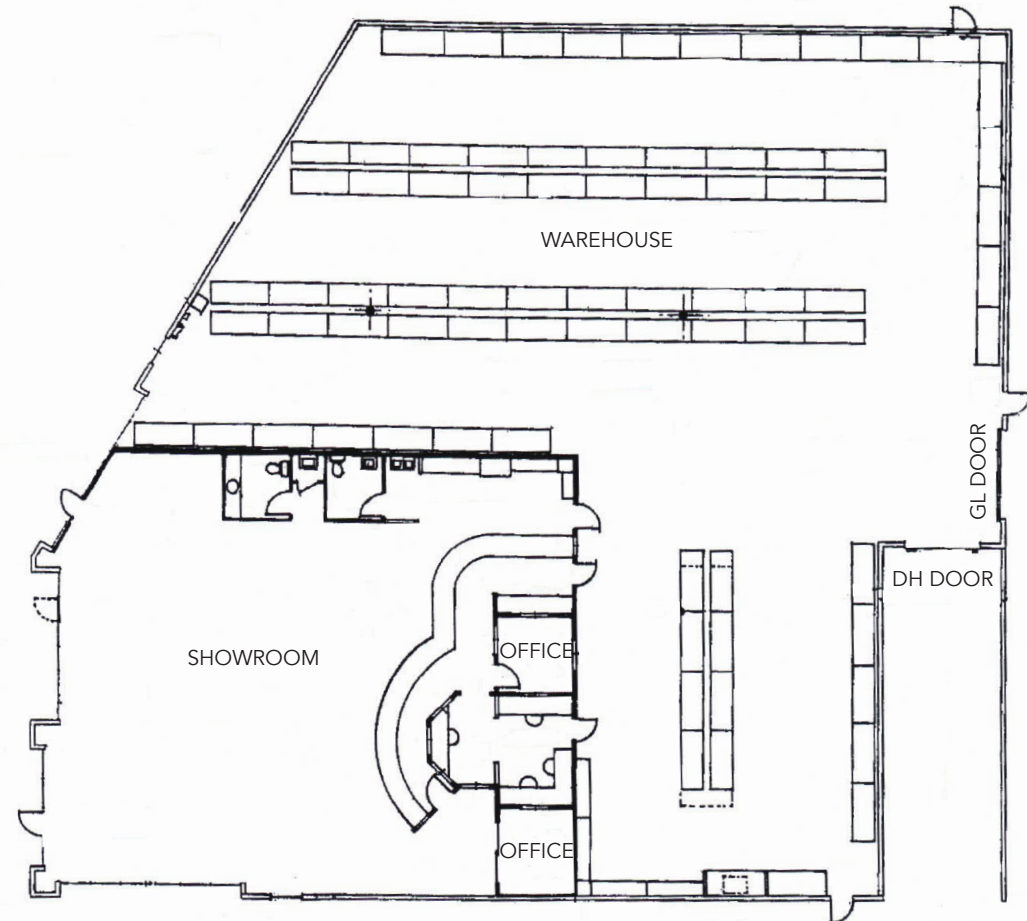
AVAILABLE SF:	±12,659 SF
OFFICE SF:	±4,023 SF Office/Showroom Space
PROPERTY TYPE :	CTU Industrial Building
GL DOOR:	1 (12' x 14')
DOCK DOOR:	1 (10' x 10')
CEILING HEIGHT :	20' (Verify)
PARKING RATIO:	2:1
EXPANDABLE POWER:	800 Amps, 277/480 Volts (Verify)
YARD:	Secured Perimeter Yard
FIRE SPRINKLER SYSTEM:	0.20 GPM/1,500 SF
ZONING:	M2
COMMENTS:	Beautiful Showroom Improvements Monument Signage on 6th Street Upgraded Warehouse Lighting



# PROMENADE BUSINESS PARK

525 CARDIFF STREET | CORONA, CA 92879

## FLOOR PLAN



**LEE & ASSOCIATES**  
COMMERCIAL REAL ESTATE SERVICES

Lee & Associates Commercial Real Estate  
Services, Inc.- Riverside  
Corp ID# 01048055  
4193 Flat Rock Drive, Suite 100  
Riverside, CA 92505

**LAWRENCE C. NULL, SIOR**  
SENIOR VICE PRESIDENT  
☎ 951.276.3616  
✉ [lnull@leeriverside.com](mailto:lnull@leeriverside.com)  
DRE License #00822133

**JUSTIN NULL, SIOR**  
VICE PRESIDENT  
☎ 951.276.3634  
✉ [jnull@leeriverside.com](mailto:jnull@leeriverside.com)  
DRE License #01899025

# PROMENADE BUSINESS PARK

525 CARDIFF STREET | CORONA, CA 92879

# LOCATION MAP



Lee & Associates Commercial Real Estate  
Services, Inc.- Riverside  
Corp ID# 01048055  
4193 Flat Rock Drive, Suite 100  
Riverside, CA 92505

**LAWRENCE C. NULL, SIOR**  
SENIOR VICE PRESIDENT  
☎ 951.276.3616  
✉ [lnull@leeriverside.com](mailto:lnull@leeriverside.com)  
DRE License #00822133

**JUSTIN NULL, SIOR**  
VICE PRESIDENT  
☎ 951.276.3634  
✉ [jnull@leeriverside.com](mailto:jnull@leeriverside.com)  
DRE License #01899025