

Available
Sublease
in
Stone Haven
Business Park

9480
Utica
Avenue
Suite 605

FOR LEASING
INFORMATION
CONTACT:

Carol D. Plowman
BRE License # 00849369
909-373-2905

Danielle Parker
BRE License # 01927503
909-373-2906

3535 Inland Empire Blvd
Ontario, CA 91764



Corporate ID# 00976995

STONE HAVEN BUSINESS PARK

10600 - 10608 Trademark Parkway & 9480 Utica Avenue
Rancho Cucamonga, CA 91730



Great Business Park Environment:

- Multi-Tenant Office / Flex Spaces
- Building and Monument Signs Available
- Move-In Ready Suites
- Up to 4:1,000 Parking on Select Units
- Easy Access to Interstate 10 and 15 Freeways
- Near LA-Ontario International Airport, Ontario Mills Mall, and Victoria Gardens



Available
Sublease
in
Stone Haven
Business Park

9480
Utica
Avenue
Suite 605

FOR LEASING
INFORMATION
CONTACT:



Corporate ID# 00976995

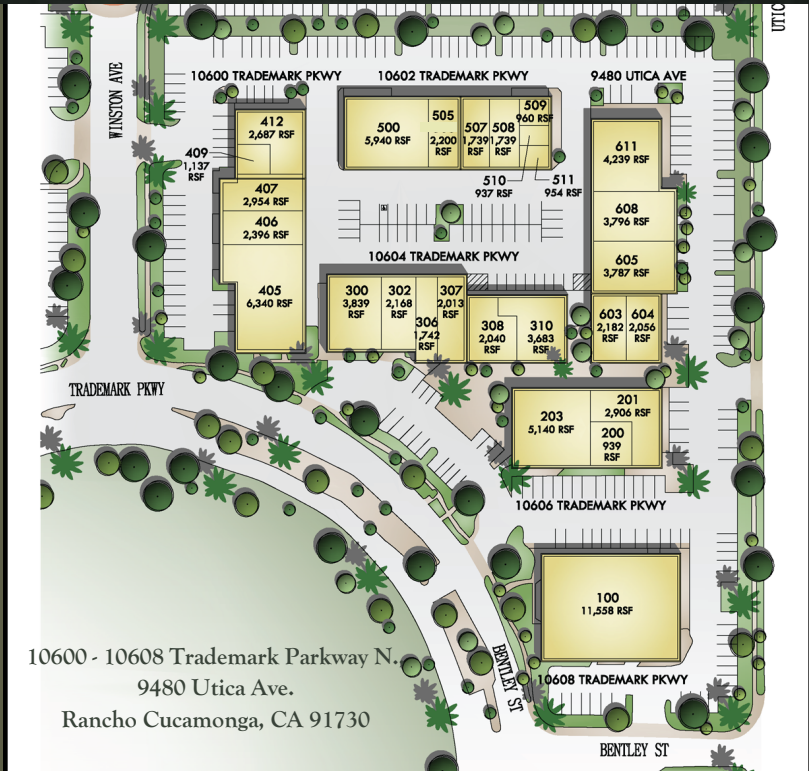
Carol D. Plowman
BRE License # 00849369
909-373-2905

Danielle Parker
BRE License # 01927503
909-373-2906

3535 Inland Empire Blvd
Ontario, CA 91764



STONE HAVEN BUSINESS PARK



10600 - 10608 Trademark Parkway N.
9480 Utica Ave.
Rancho Cucamonga, CA 91730

AVAILABILITIES:

| STREET ADDRESS | SUITE | ±SF | RATE / SF | AVAILABILITY |
|-------------------|-------|-------|-----------|--------------|
| 9480 Utica Avenue | 605 | 3,787 | \$1.75 | 7/31/26 |

Master Lease Expires:
CAM Fee:

April 30th, 2028
\$0.10 / SF

STONE HAVEN

BUSINESS PARK

9480
Utica
Avenue
Suite 605

FOR LEASING
INFORMATION
CONTACT:

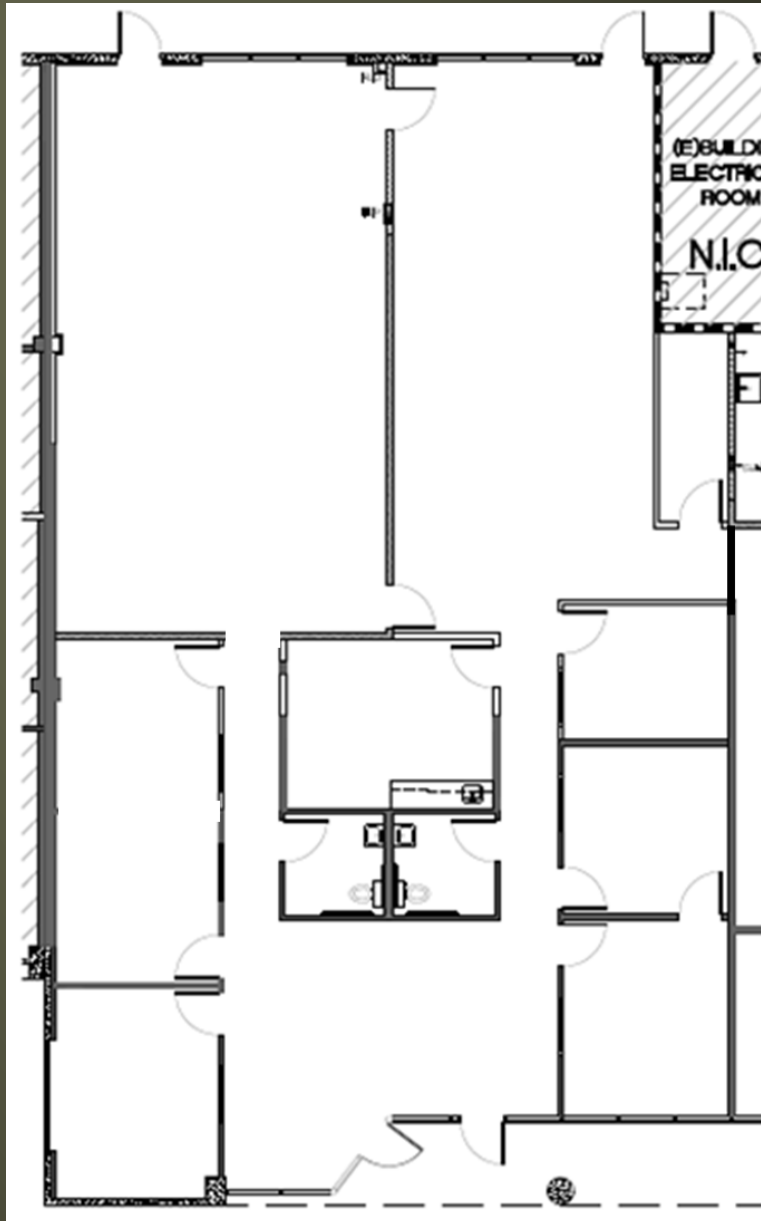


Corporate ID# 00976995

Carol D. Plowman
BRE License # 00849369
909-373-2905

Danielle Parker
BRE License # 01927503
909-373-2906

3535 Inland Empire Blvd
Ontario, CA 91764



Suite 605
± 3,787 SF