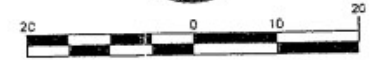


THIRD LEVEL

UPPER LIMITS ELEVATION - 58.14' (MSL)
 LOWER LIMITS ELEVATION - 45.11' (MSL)



SCALE IN FEET
 LEGEND

- CL INDICATES CLOSET
- ELEC INDICATES ELECTRICAL
- JAN INDICATES JANITOR
- SPR INDICATES SPRINKLER
- (C.E.) [Pattern] INDICATES COMMON ELEMENTS
- (L.C.E.) [Pattern] INDICATES LIMITED COMMON ELEMENTS
- [Pattern] INDICATES CONDOMINIUM UNIT
- [Pattern] INDICATES CHASE / DUCT BANK
- (M.S.L.) INDICATES MEAN SEA LEVEL (NATIONAL GEODETIC VERTICAL DATUM 1929)

NOTES:

1. INTERIOR DIVIDING WALL WIDTHS VARY.
2. EXTERIOR WALL WIDTHS VARY.
3. SUBJECT TO ALL EASEMENTS SET FORTH IN THE DECLARATION OF CONDOMINIUM AND ALL OTHER MATTERS OF RECORDS.
4. ALL AREAS NOT INCLUDED IN UNIT BOUNDARIES OR LABELED LIMITED COMMON ELEMENT, ARE COMMON ELEMENTS.
5. FOR ALL PERTINENT INFORMATION, REFER TO THE DECLARATION OF CONDOMINIUM.

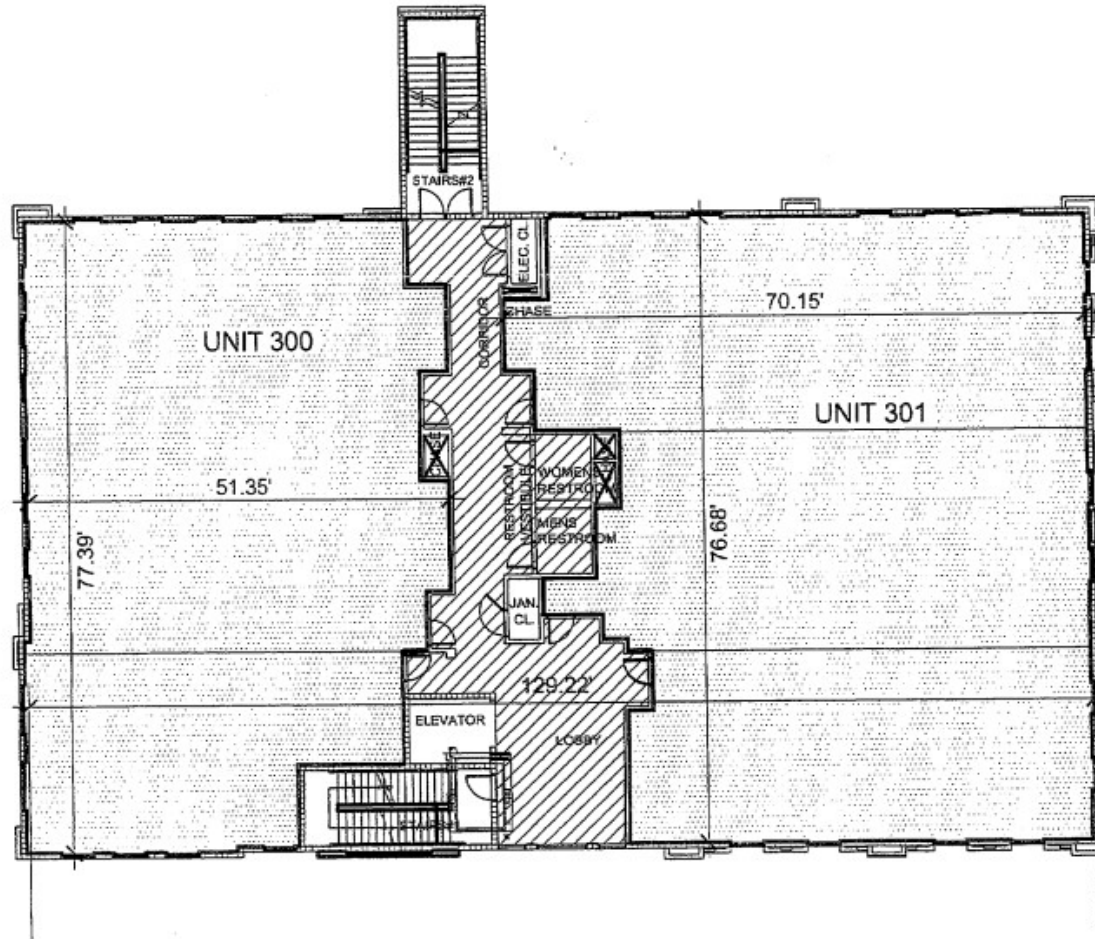


EXHIBIT "B"
 SHEET 5 OF 7

THE 4848 BUILDING AT STRADA,
 A Condominium

UPDATES and/or REVISIONS	DATE	BY	QCD	SCALE: 1"=20'
REVISED PER ATT COMMENTS	11/28/07	DM	DMD	BY: DM
REVISE CONDO NAME	3/11/08	DMD	DMD	OKD DMD
REVISE LIMITED COMMON ELEMENTS	2/11/08	DM	DMD	DATE 11/20/07
REVISED UNDER CONSTRUCTION FINAL	7/1/08	DM	DMD	T & E COO: N/A
FINAL CONDOMINIUM DOCUMENTS	8/2/09	EM	DMD	JCE NO. 03-0651



Craven-Thompson & Associates, Inc.
 ENGINEERS PLANNERS SURVEYORS
 3563 N.W. 53RD STREET FORT LAUDERDALE, FLORIDA 33309 (954) 739-6400
 Fax: (954) 739-6109

MATERIAL SHOWN HEREON IS THE PROPERTY OF CRAVEN-THOMPSON & ASSOCIATES, INC. AND SHALL NOT BE REPRODUCED IN WHOLE OR PART WITHOUT PERMISSION OF CRAVEN-THOMPSON & ASSOCIATES, INC. IN WRITING.