

680 MADISON AVENUE

BETWEEN E 61ST AND E 62ND STREETS



ROBIN ZENDELL & ASSOCIATES | +1 212.274.8330

680 Madison Avenue

Situated on Madison Avenue between East 61st and 62nd Streets, 680 Madison Avenue spans a full western block within Manhattan's premier luxury retail corridor, surrounded by an established concentration of world-class fashion, jewelry, and lifestyle brands.

Nearby flagships from Tom Ford, Asprey, Oscar de la Renta, Brioni, Hermès, Goyard, and Van Cleef & Arpels anchor the immediate area, driving consistent high-end pedestrian activity, with approximately 135,000 visits recorded in 2023.



680 Madison Avenue

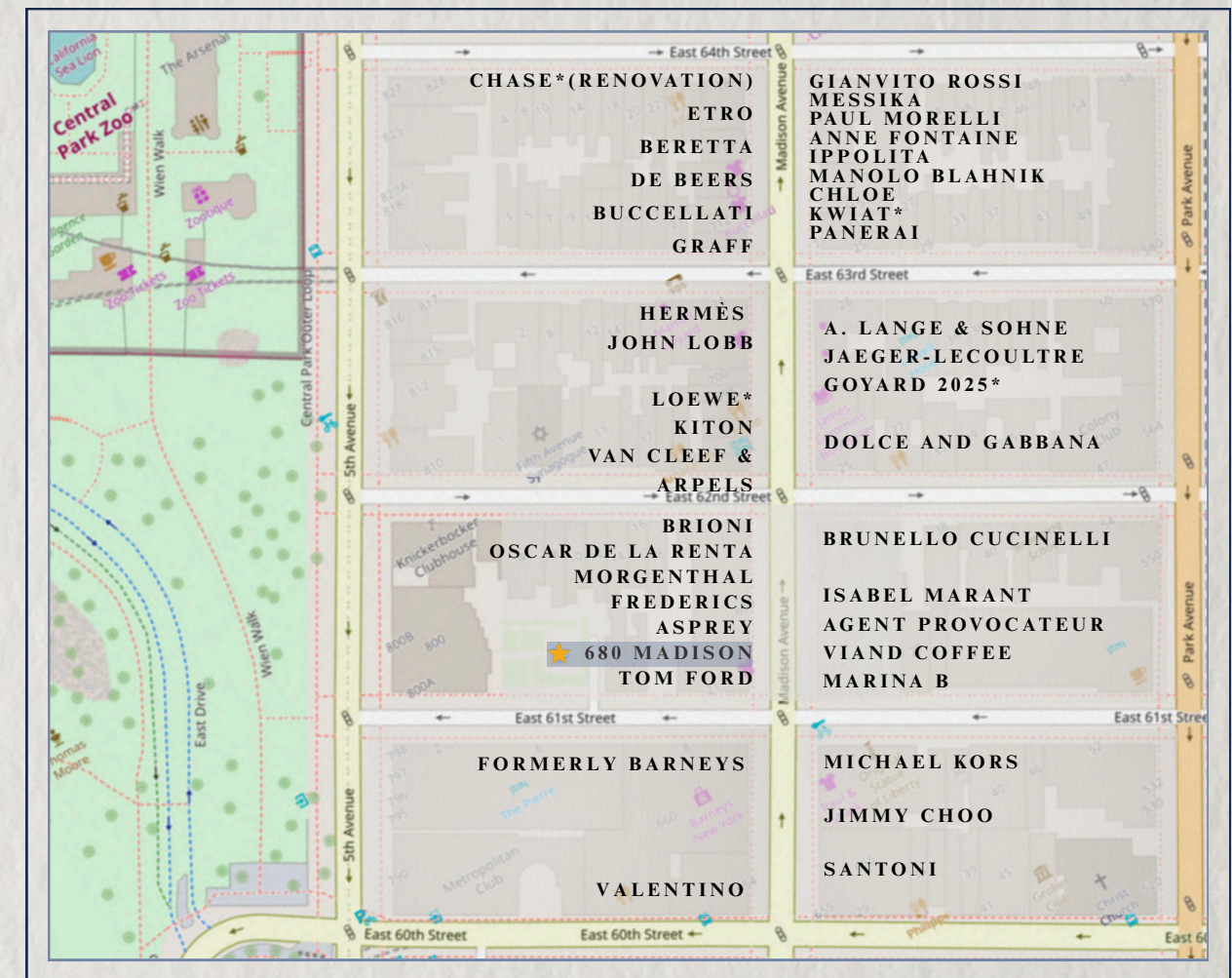
LEASING OVERVIEW

AVAILABLE AREA	3,544 SF
CEILING HEIGHT	15 FT
FRONTAGE	30 FT
CONFIGURATION	TBD
POSSESSION	UPON REQUEST
ASKING	UPON REQUEST



680 Madison Avenue

PRIME RETAIL LOCATION



TOM FORD



BRUNELLO CUCINELLI

Asprey

Van Cleef & Arpels

Brioni

DOLCE & GABBANA

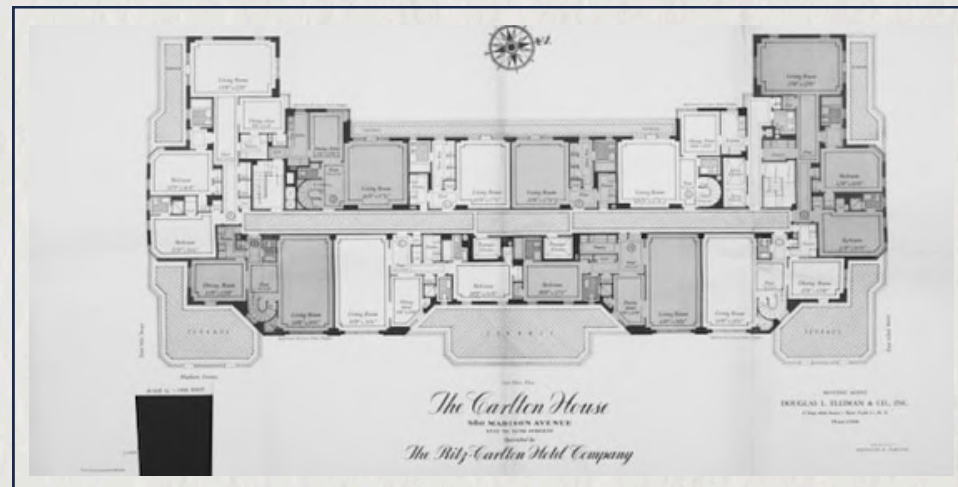


HERMÈS
PARIS

**ISABEL
MARANT**

680 Madison Avenue

HISTORY



680 Madison Avenue is a Manhattan icon, blending architectural distinction with a storied social legacy. **Built in 1950 as the successor to the Ritz-Carlton's Carlton House**, this fifteen-story neo-Georgian residential hotel, **designed by Kenneth B. Norton**, features recessed massing, projecting bays, fluted pilasters, and elegant casement windows—a **refined mid-century interpretation of Georgian and neo-Classical styles**.

From its 1951 debut, **Carlton House served as a discreet social hub**, hosting debutante balls, weddings, and private dinners, with **residents including Lucius D. Clay, Joseph Revson, and Jean Riboud**. **Acquired in 1964 by Harry Helmsley and Lawrence Wien and renamed the Helmsley Carlton House**, its prestige grew further with the **1980s arrival of Pierre Cardin's Maxim's de Paris**.

Today, 680 Madison Avenue remains a rare Manhattan address where architectural elegance meets historic social prominence.



680

MADISON AVENUE

BETWEEN E 61ST AND E 62ND STREETS

**ROBIN ZENDELL
& ASSOCIATES**

**888 SEVENTH AVENUE 45TH FLOOR CPS
NEW YORK, NY 10019
+1 212 274 8330**

**ROBIN ZENDELL
robin@robinzendell.com
+1-212-274-8330**

ROBIN ZENDELL & ASSOCIATES | +1 212 . 274 . 8330