

Available
Sub-Lease
Office Space
in
Stone Haven
Business Park

9480
Utica
Avenue
Suite 611-A

FOR LEASING
INFORMATION
CONTACT:

Carol D. Plowman
BRE License # 00849369
909-373-2905

Danielle Parker
BRE License # 01927503
909-373-2906

3535 Inland Empire Blvd
Ontario, CA 91764



Corporate ID# 00976995

STONE HAVEN BUSINESS PARK

10600 - 10608 Trademark Parkway & 9480 Utica Avenue
Rancho Cucamonga, CA 91730



Great Business Park Environment:

- Multi-Tenant Office / Flex Spaces
- Building and Monument Signs Available
- Move-In Ready Suites
- Up to 4:1,000 Parking on Select Units
- Easy Access to Interstate 10 and 15 Freeways
- Near LA-Ontario International Airport, Ontario Mills Mall, and Victoria Gardens



Available
Office Space
in
Stone Haven
Business Park

9480
Utica
Avenue
Suite 611-A

FOR LEASING
INFORMATION
CONTACT:

**LEE &
ASSOCIATES**
COMMERCIAL REAL ESTATE SERVICES

Corporate ID# 00976995

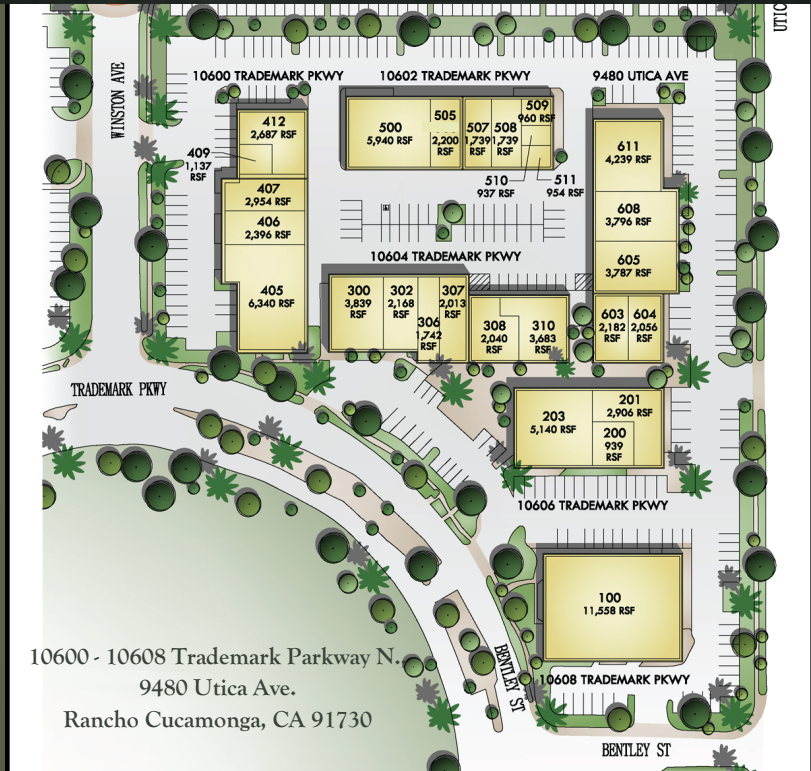
Carol D. Plowman
BRE License # 00849369
909-373-2905

Danielle Parker
BRE License # 01927503
909-373-2906

3535 Inland Empire Blvd
Ontario, CA 91764

CIP REAL ESTATE

STONE HAVEN BUSINESS PARK



10600 - 10608 Trademark Parkway N.
9480 Utica Ave.
Rancho Cucamonga, CA 91730

AVAILABILITIES:

STREET ADDRESS	SUITE	±SF	RATE / SF	AVAILABILITY
9480 Utica Avenue	611 A	1,682	\$1.65	7/31/2026

Master Lease Expires:
CAM Fee:

April 30th, 2028
\$0.10 / SF

Available
Sub-Lease
Office Space

9480
Utica Avenue
Suite 611 A

FOR LEASING
INFORMATION
CONTACT:



Corporate ID# 00976995

Carol D. Plowman
BRE License # 00849369
909-373-2905

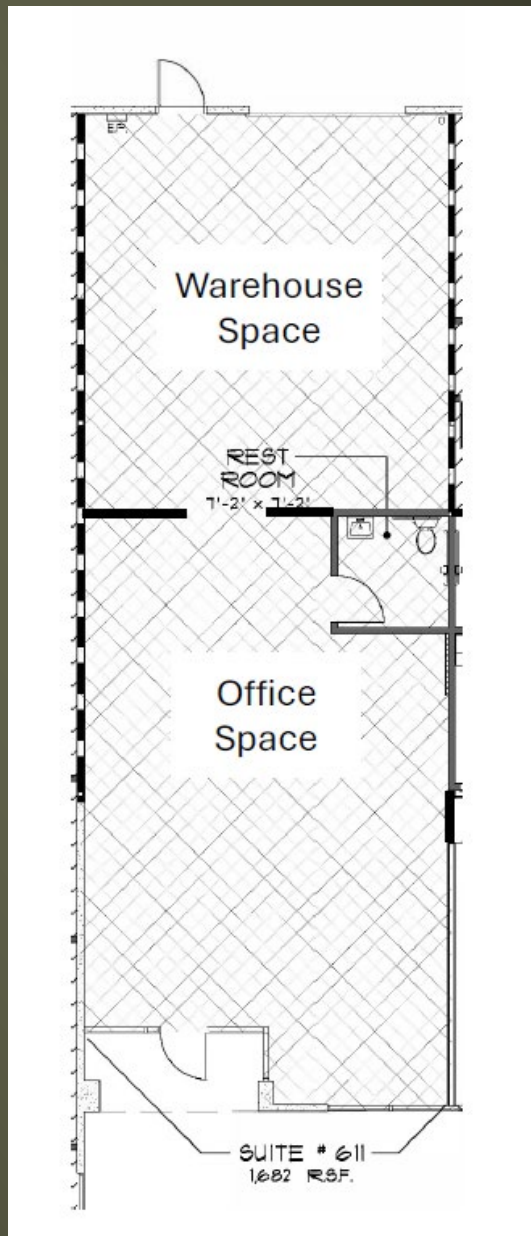
Danielle Parker
BRE License # 01927503
909-373-2906

3535 Inland Empire Blvd
Ontario, CA 91764



STONE HAVEN

BUSINESS PARK



Suite 611 A
± 1,682 RSF