

2230 CROPSEY AVENUE

OFF OF BAY PARKWAY | BATH BEACH/GRAVESEND

LEASED

COMMUNITY FACILITY SPACE FOR LEASE



2230 CROPSEY AVENUE

OFF OF BAY PARKWAY | BATH BEACH/GRAVESEND

PROPERTY DETAILS

SIZE:	501 SF Ground Floor 18,000 SF Second Floor
FRONTAGE:	80'
CEILING HEIGHT:	12'
POSSESSION:	Immediate
ASKING RENT:	Upon Request
TRANSPORTATION:	 , B6, B82

HIGHLIGHTS

- Community facility
- Two private elevators
- 248 apartments above
- High vehicle traffic area
- Dense residential neighborhood
- Neighbors include:
Key Food Supermarkets, Food Bazaar, Cropsey Bagels, Parkview Diner, La Casa Bella, Bamboo Seafood Restaurant, Best Buy Deli, Ras Plant Based, L'Algeroise French pâtisserie, Skyway Grocery and Halal Meat, Starbucks, T-Mobile, Foodtown



2230 CROPSEY AVENUE

OFF OF BAY PARKWAY | BATH BEACH/GRAVESEND

AREA MAP:



2230 CROPSEY AVENUE

OFF OF BAY PARKWAY | BATH BEACH/GRAVESEND

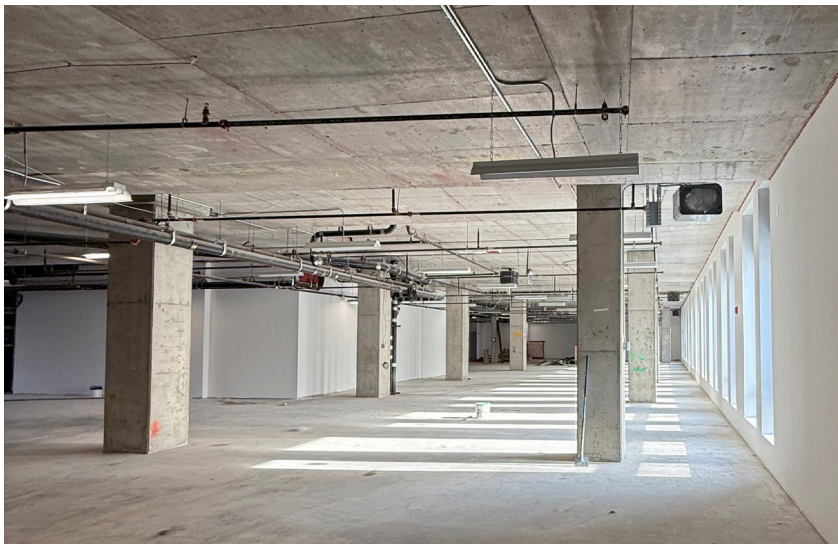
FLOOR PLAN:
SECOND FLOOR - 18,000 SF



2230 CROPSEY AVENUE

OFF OF BAY PARKWAY | BATH BEACH/GRAVESEND

INTERIORS:



All information supplied in this marketing presentation and/or flyer is from sources deemed reliable and is furnished subject to errors, omissions, modifications, removal of listings from sale/lease and to any listing condition. Any square footage, dimensions, floor plans and/or technical data set forth are approximations and are subject to further elaboration/confirmation.

2230 CROPSEY AVENUE

OFF OF BAY PARKWAY | BATH BEACH/GRAVESEND

**FOR MORE INFORMATION,
PLEASE CONTACT:**

JORDAN SOLEIMANI

516.732.3697 | JSoleimani@ksrny.com

ELI YADID

917.770.9173 | EYadid@ksrny.com



1385 Broadway, 22nd Floor | New York, NY 10018
212.417.9217

ksrny.com