

For Lease

34th & Val Business Center

Orlando, FL 32811



**AVISON
YOUNG**

Sean DuPree, CCIM
Senior Vice President
407.440.6662
sean.dupree@avisonyoung.com

Lisa Bailey, SIOR
Principal
407.440.6645
lisa.bailey@avisonyoung.com

avisonyoung.com

34TH & VAL BUSINESS CENTER

Introduction

Located at 3506 St. Valentine Way, this multi-tenant grade-level industrial building benefits from a prime position just north of the intersection of Vineland Road and Conroy Road at I-4 and is located within the third largest industrial submarket in the region. The 28,600 SF± property offers exceptional accessibility and visibility within the heart of Orlando's bustling commercial corridor. With excellent connectivity to I-4, Florida's Turnpike, and the 408 Expressway, this property ensures quick access to most of the Metro Orlando area.

PROPERTY HIGHLIGHTS

GRADE LEVEL DOORS: 14'X14'

ZONING: I-P (CITY OF ORLANDO)

CLEAR HEIGHT: 20'-24'

YEAR BUILT: 2008

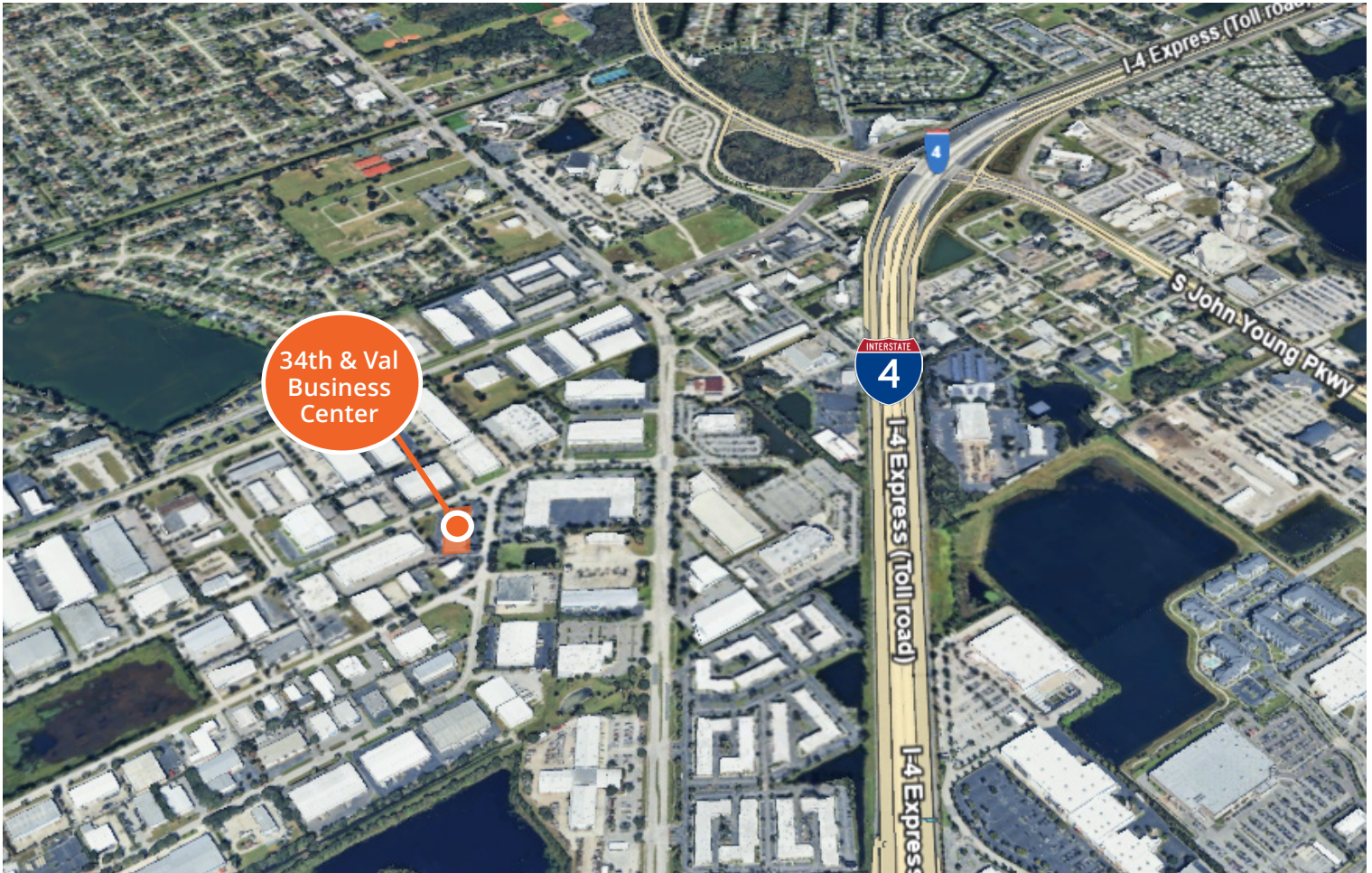
PARKING RATIO: 2.83/1,000

**CONSTRUCTION: CONCRETE BLOCK
& METAL**



Nearby Amenities

34th & Val Business Center
Office/Industrial Space For Lease
3506 St. Valentines Way
Orlando, Florida 32811



**AVISON
YOUNG**

Sean DuPree, CCIM
Senior Vice President
407.440.6662
sean.dupree@avisonyoung.com

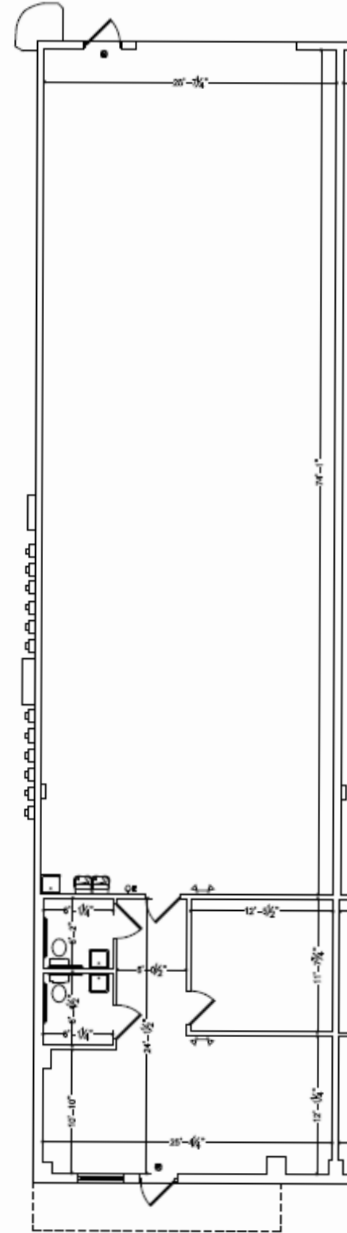
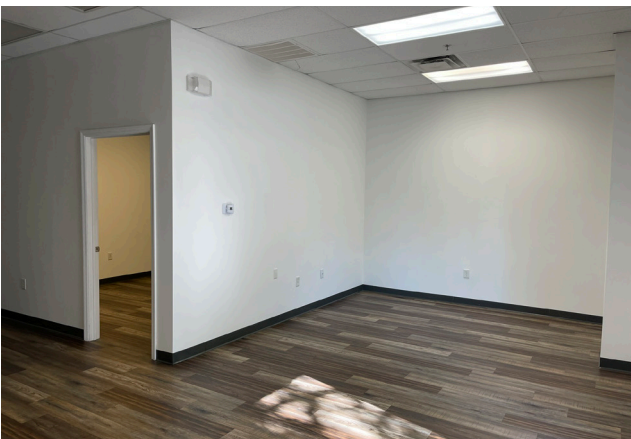
Lisa Bailey, SIOR
Principal
407.440.6645
lisa.bailey@avisonyoung.com

avisonyoung.com

Floorplans

34th & Val Business Center
Office/Industrial Space For Lease
3506 St. Valentines Way
Orlando, Florida 32811

Unit 1
2,600± sf
Office/Warehouse Space



Sean DuPree, CCIM
Senior Vice President
407.440.6662
sean.dupree@avisonyoung.com

Lisa Bailey, SIOR
Principal
407.440.6645
lisa.bailey@avisonyoung.com

avisonyoung.com

Unit 8
2,600± sf
Office/Warehouse Space

