

FOR LEASE

ONE SOLUTIONS WAY

Waynesboro, VA 22980

NEWMARK



PROPERTY INFORMATION

Total SF:	5,000-140,000
Contiguous SF:	90,000
Land Area:	55.86 acres
Zoning:	M-2
Dock High Doors:	6
Drive-ins:	2
Lease rate:	\$4.50 MG

PROPERTY HIGHLIGHTS

- Four outbuildings available - 4,000 - 12,000 SF
- 1,000 surface spaces



FOR LEASE INFORMATION:

Grant Bates, SIOR
Executive Managing Director
434 882 1176
grant.bates@nrmk.com

Wyant Wharton
Associate
434 906 9373
wyant.wharton@nrmk.com

3410W Leigh Street, Richmond, VA 23230

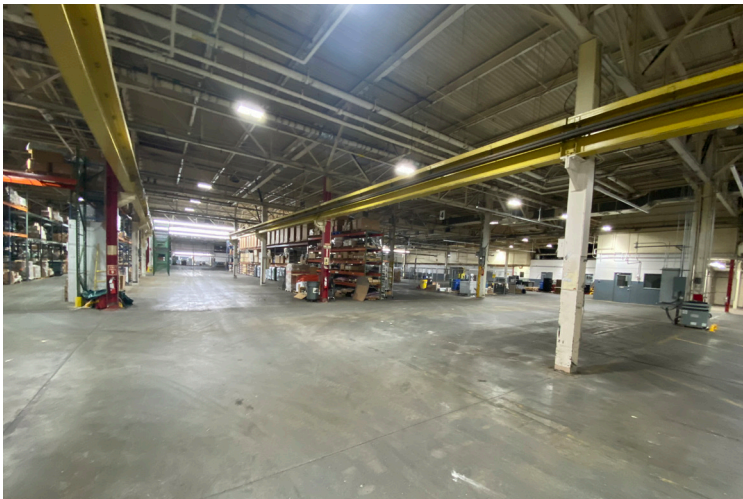
The information contained herein has been obtained from sources deemed reliable, but has not been verified and no guarantee, warranty or representation, either express or implied, is made with respect to such information. Terms of sale or lease and availability are subject to change or withdrawal without notice.

FOR LEASE

ONE SOLUTIONS WAY

Waynesboro, VA 22980

NEWMARK



3410 W Leigh Street, Richmond, VA 23230

The information contained herein has been obtained from sources deemed reliable, but has not been verified and no guarantee, warranty or representation, either express or implied, is made with respect to such information. Terms of sale or lease and availability are subject to change or withdrawal without notice.

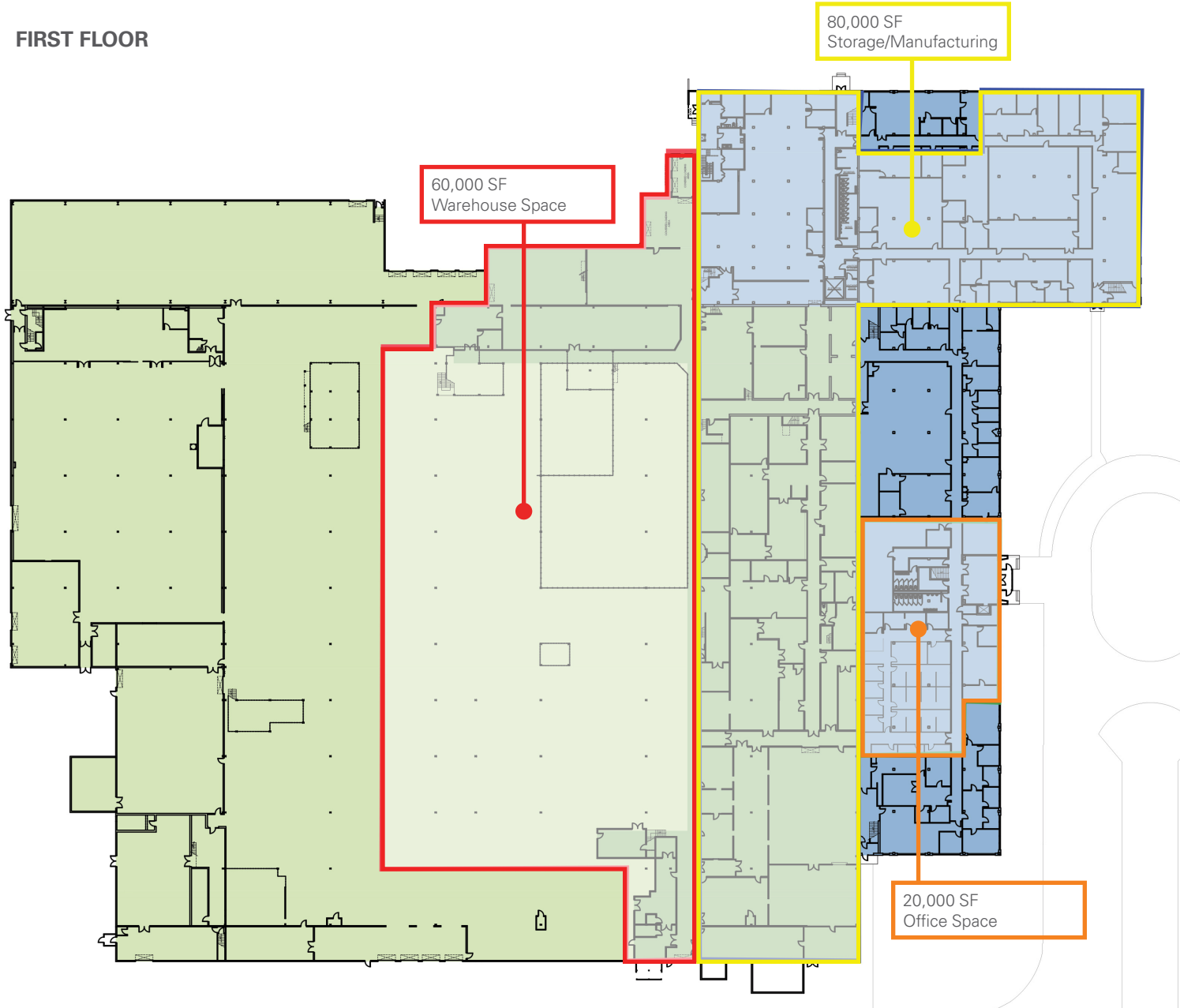
FOR LEASE

ONE SOLUTIONS WAY

Waynesboro, VA 22980

NEWMARK

FIRST FLOOR



FOR LEASE INFORMATION:

Grant Bates, SIOR
Executive Managing Director
434 882 1176
grant.bates@nrmk.com

Wyant Wharton
Associate
434 906 9373
wyant.wharton@nrmk.com

3410W Leigh Street, Richmond, VA 23230

The information contained herein has been obtained from sources deemed reliable, but has not been verified and no guarantee, warranty or representation, either express or implied, is made with respect to such information. Terms of sale or lease and availability are subject to change or withdrawal without notice.

FOR LEASE

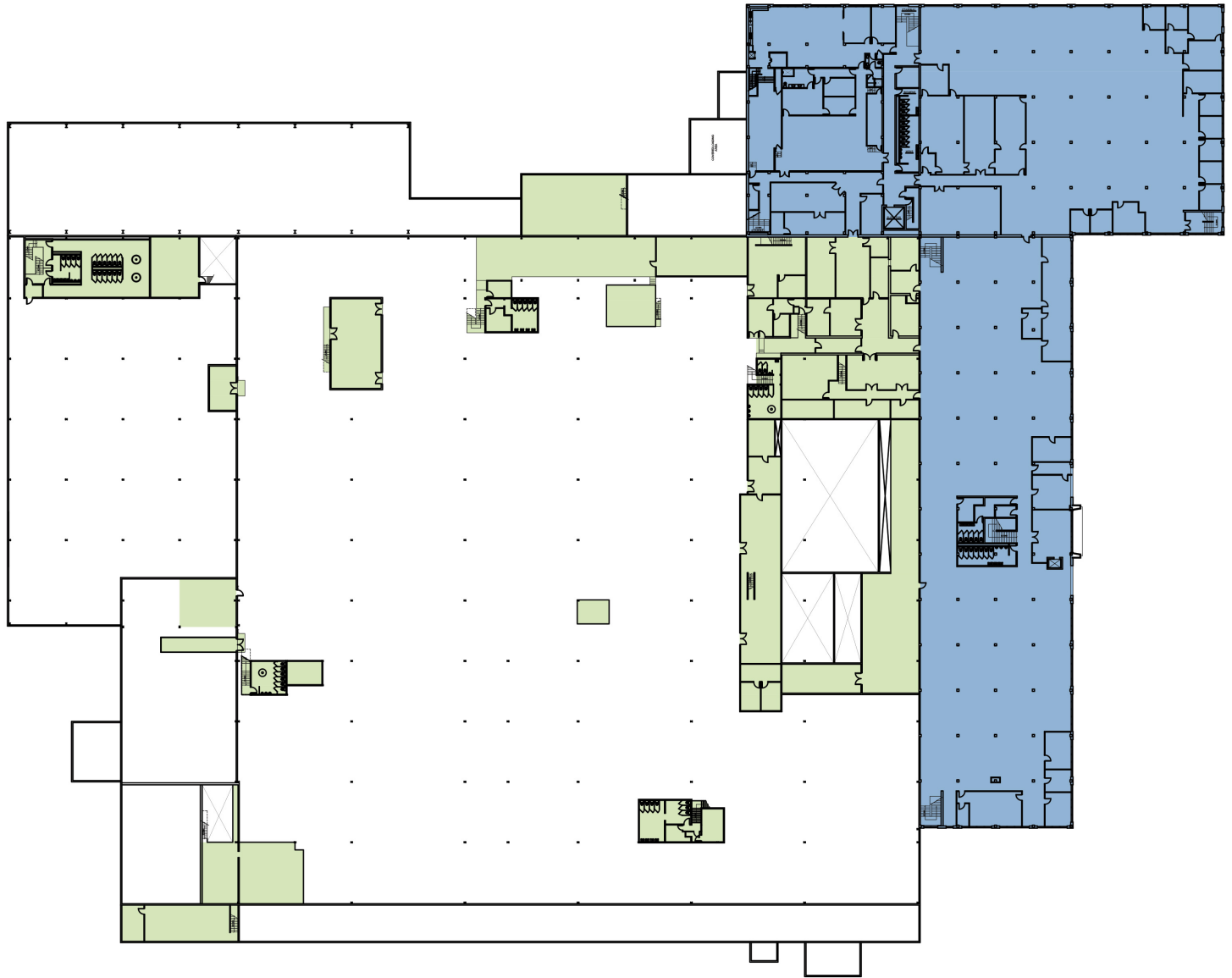
ONE SOLUTIONS WAY

Waynesboro, VA 22980

NEWMARK

SECOND FLOOR

Office/Storage 80,000 SF



FOR LEASE INFORMATION:

Grant Bates, SIOR
Executive Managing Director
434 882 1176
grant.bates@nmrk.com

Wyant Wharton
Associate
434 906 9373
wyant.wharton@nmrk.com

3410W Leigh Street, Richmond, VA 23230

The information contained herein has been obtained from sources deemed reliable, but has not been verified and no guarantee, warranty or representation, either express or implied, is made with respect to such information. Terms of sale or lease and availability are subject to change or withdrawal without notice.