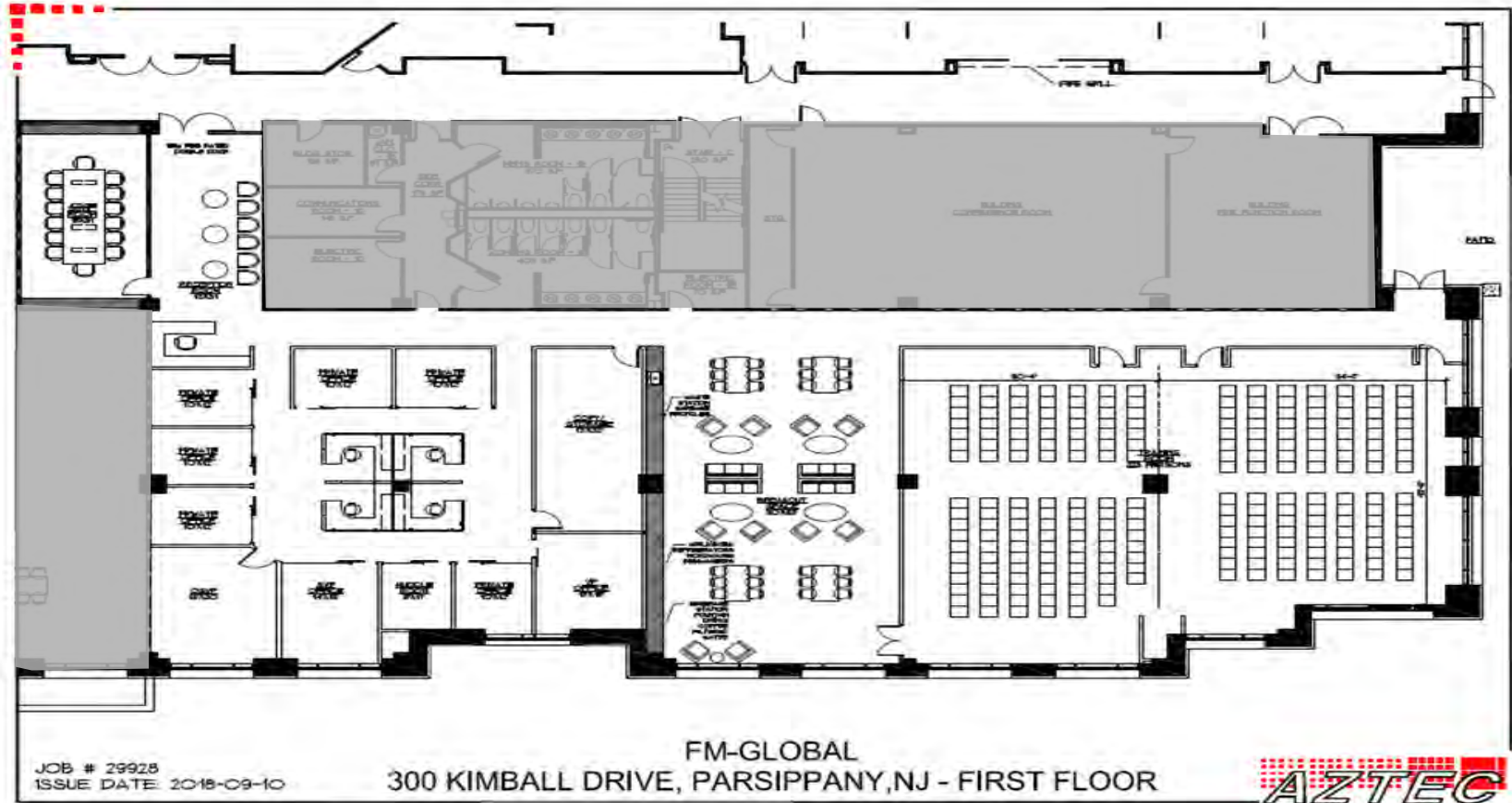


FIRST FLOOR

12,263 RSF | AVAILABLE JUNE 1, 2025



300kimball.com



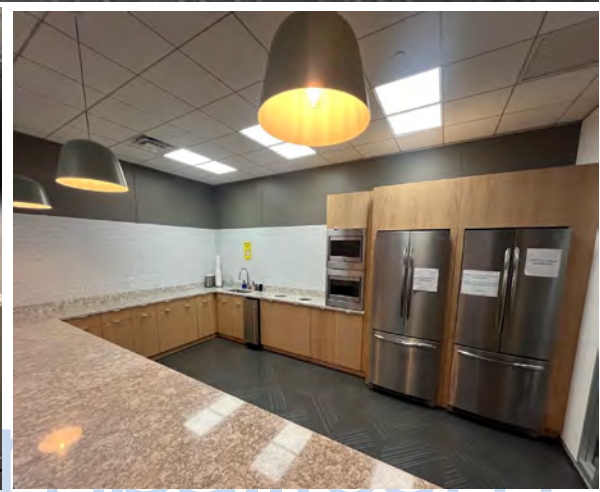
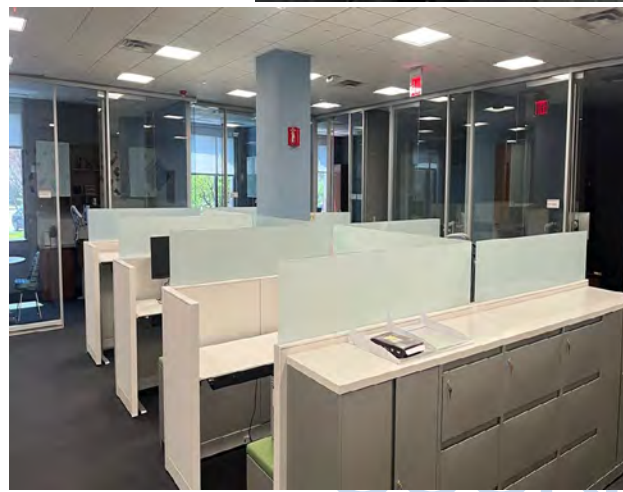
EXCLUSIVE BROKERS

Matt McDonough
Dan Ligorner

973 829 4711
973 829 4726

matt.mcdonough@jll.com
dan.ligorner@jll.com





EXCLUSIVE BROKERS

Matt McDonough
Dan Ligorner

973 829 4711
973 829 4726

matt.mcdonough@jll.com
dan.ligorner@jll.com

