



AT THE INTERSECTION OF  
CROSBY & HOWARD

29 HOWARD STREET

## DETAILS

Ground Level.....	1,944 SF
Lower Level.....	1,820 SF
Frontage.....	Approximately 18'
Ceiling Heights.....	14' (Ground), 10' (Lower)
Possession.....	July 2026
Asking Rent.....	Please Inquire

## SPACE FEATURES

- 2 attractive finished levels
- Strong fashion and home design neighbors
- A few doors down from boutique hotel, 11 Howard, and within steps of NoMo Soho, and Crosby Street Hotel
- Skylight located on ground level and windows in back of both levels

## NEIGHBORS

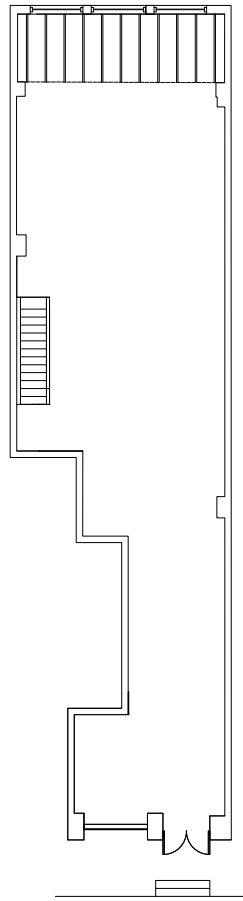
- Rick Owens
- Studious Tokyo
- Golf Wang
- R13 Denim
- BDDW
- Le Coucou
- Maison Margiela
- Raisonné
- Bonobos
- Smile To Go





**SINVIN**  
COMMERCIAL REAL ESTATE & ADVISORY

<p>BRANDY MELLVILLE • URBAN REVIVO • TUMI • ZARA • PACSUN • WINDSOR • eVi's • MYSTIQUE • BADI CHI • DW • Daniel Wellington • dolce vita</p>	<p>PRINCESS POLLY • COTTON ON • UNO • GARAGE • MAC • blomingdales • SAVE THE DUCK • STEVE MADDEN • MINISO • SUNDAY CITIZEN • BROKEN ENGLISH • PERFECT MOMENT</p>	<p>LUCKYS • OFFICINE GENERALE • The Frankie Shop • MORINI • MIZ WALLACE • CAFE SELECT • Mitchell Gold + Bob Williams • Indochino • EAT. A.L.Y.</p>
<b>BROADWAY</b>		
<p>OME STREET • TJ-MAXX • SLOOMOO • THINK COFFEE • AWET •</p>	<p>BURK MASON • LOS ANGELES APPAREL • CITIBANK • NC OUTLETS • SKIN1004 • 260 • WELLS FARGO • THE CLOSET</p>	<p>LE YORK SPA • paloma—wool • IZM KTOP • LIVING SLOLO • GHT MATTRESS • CERAMONLINE • Malbon • VINTAGE BLACK LABEL • BONOBOS • GALERIE • A-TO SALON • FELLOW BARBER • 260 SAMPLE SALE • SATURDAYS • SUBP NYC • PETER FREEMAN, INC.</p>
<b>BROADWAY</b>		
<p>GRAND STREET • DUANE reade • MUJI • CB2 • BLICK • LA ROPA LIFE • THE SHOP'S OF SOHO</p>	<p>STUBB • NAKED &amp; FAMOUS • RED DIGITAL CINEMA • Le Botanistic • PARACHUTE • LAICALE • LIVE BY THE SWORD • PEARL RIVER MART • VALLEY NATIONAL • RALLY • Rumi • STARBUCKS • NECESSARY CLOTHING • Foot Locker • Champion • R. 13 • Schott • Sneakers • Shoes</p>	<p>FUEGIA 1833 • AMERICAN TWO SPOT • GRANVETE • SOHO THAI • ESSENTIAL SPA • SPOKE &amp; WEA • GARRETT LEIGHT • CALIFORNIA OPTICAL • DINOSAUR DESIGNS • STONE AND STRAND • THE SHIP • JACQUES • NOMO SOHO • BDDW • FIVE POINTS ACADEMY • MMG • Mason Margiela • SMILE • THE BAR • BDDW • 260</p>
<b>BROADWAY</b>		
<p>STEVE MADDEN • 32 NYC</p>	<p>PIQ Soho • GOLF WING • STUDIOS • manjuli coffee &amp; clothing • 29 HOWARD • 2nd STREET • Y3 • TWP • HOWARD HOTEL • 11 HOWARD STREET • de Colucci</p>	<p>GRAND STREET SOCIAL • 161 LAFAYETTE • STARBUCKS • LOVE • LOVE HATE SOCIAL CLUB • LAFAYETTE STREET</p>



GROUND LEVEL



29 HOWARD STREET

For more information on 29 Howard Street, please contact:

**Christopher Owles**  
212.604.9002 [chris@sinvin.com](mailto:chris@sinvin.com)

**Sarah Shannon**  
646.673.8780 [sarah@sinvin.com](mailto:sarah@sinvin.com)

**SINVIN**  
COMMERCIAL REAL ESTATE & ADVISORY