

12006 PLUM ORCHARD DRIVE

Silver Spring, MD 20904
Montgomery County

15,000 SF AVAILABLE



PROPERTY INFORMATION

- Retail/Showroom/Warehouse
- Loading Docks: 2
- High Ceilings: 24ft
- Parking: 75 spots
- Conveniently located minutes from Cherry Hill Road, Columbia Pike and I-95
- Across the street from Orchard Shopping Center anchored by Target & Giant and Adventist HealthCare Medical Center

LEASED BY:

klnb

Kenneth Fellows
301-222-0210
kfellows@klnb.com

Robert E. Pugh
301-222-0211
rpugh@klnb.com

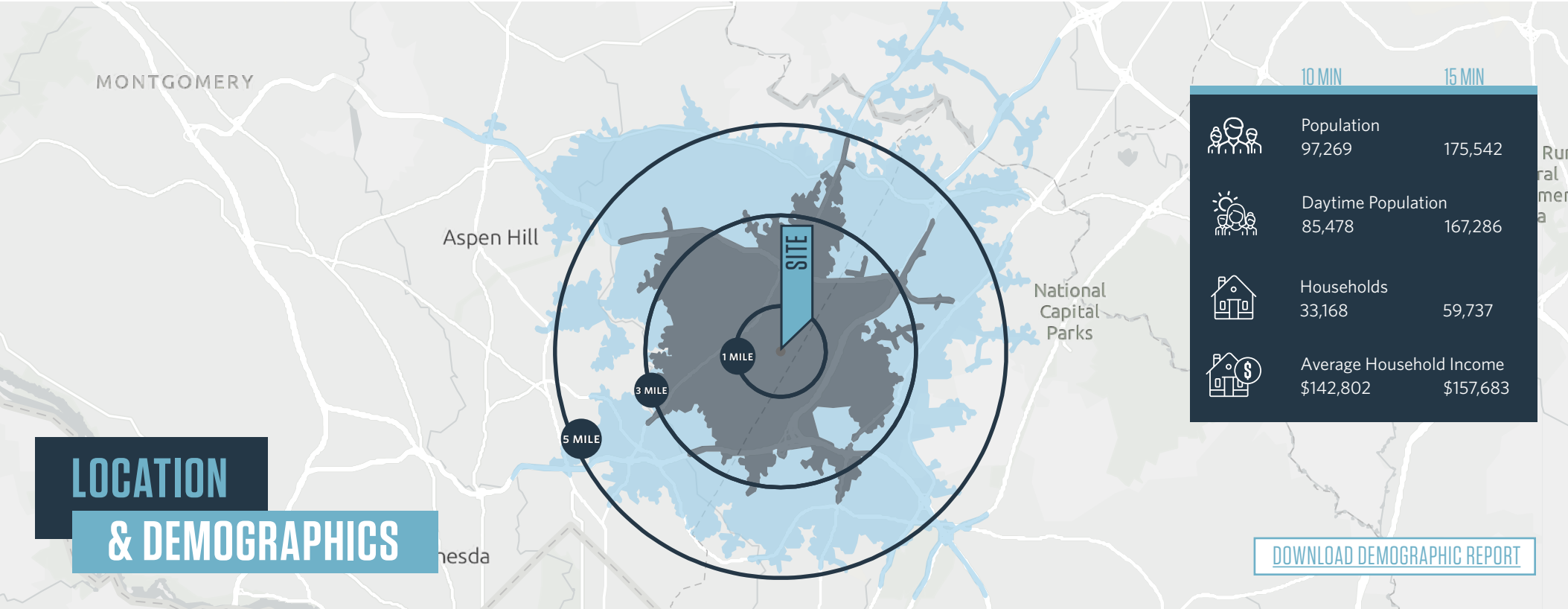
Keiry Martinez
703-334-5629
kmartinez@klnb.com

Matt Skalet
202-420-7775
mskalet@klnb.com

12435 Park Potomac Ave, Suite 250
Rockville, MD 20854
klnb.com

12006 PLUM ORCHARD DRIVE

Silver Spring, MD 20904
Montgomery County



	1-MILE	3-MILES	5-MILES				
	Population	15,537	93,094	204,159		Households	
					6,164	31,059	65,572
	Daytime Population	21,432	76,497	190,515		Average Household Income	
					\$109,992	\$133,501	\$141,167

Kenneth Fellows
kfellows@klnb.com
301-222-0210

Robert Pugh
rpugh@klnb.com
301-222-0211

Keiry Martinez
kmartinez@klnb.com
703-334-5629

Matt Skalet
mskalet@klnb.com
202-420-7775

12435 Park Potomac Ave, Suite 250
Rockville MD, 20854
klnb.com



12006 PLUM ORCHARD DRIVE

Silver Spring, MD 20904
Montgomery County



ORCHARD SHOPPING CENTER

KOHL'S

Giant **TARGET**

PETSMART

SITE

Adventist HealthCare
White Oak Medical Center

- Opened in 2020
- Campus of 270 Inpatient Beds including an acute care Rehabilitation Hospital
- Over 1500 employees

390 MF Units Planned

HOME DEPOT

MARGARITAS

Public Storage

IBOP

MC MONTGOMERY COLLEGE

165K Office/Flex

Capital One

Chick-fil-A

FRIDAYS

Panera

55,422 SF office

amazon fresh

FIRST WATCH THE DAYTIME CAFE

OAK BARREL & VINE

INSPIRE NAIL BAR & SPA

VIVA WHITE OAK

- \$3 billion 300-acre development project
- 7 million SF of commercial development and 5,000 residential units
- World-class life sciences center

Kenneth Fellows
kfellows@klnb.com
301-222-0210

Robert Pugh
rpugh@klnb.com
301-222-0211

Keiry Martinez
kmartinez@klnb.com
703-334-5629

Matt Skalet
mskalet@klnb.com
202-420-7775

12435 Park Potomac Ave, Suite 250
Rockville MD, 20854
klnb.com



12006 PLUM ORCHARD DRIVE

Silver Spring, MD 20904
Montgomery County

CLOSE-UP AERIAL



Kenneth Fellows
kfellows@klnb.com
301-222-0210

Robert Pugh
rpugh@klnb.com
301-222-0211

Keiry Martinez
kmartinez@klnb.com
703-334-5629

Matt Skalet
mskalet@klnb.com
202-420-7775

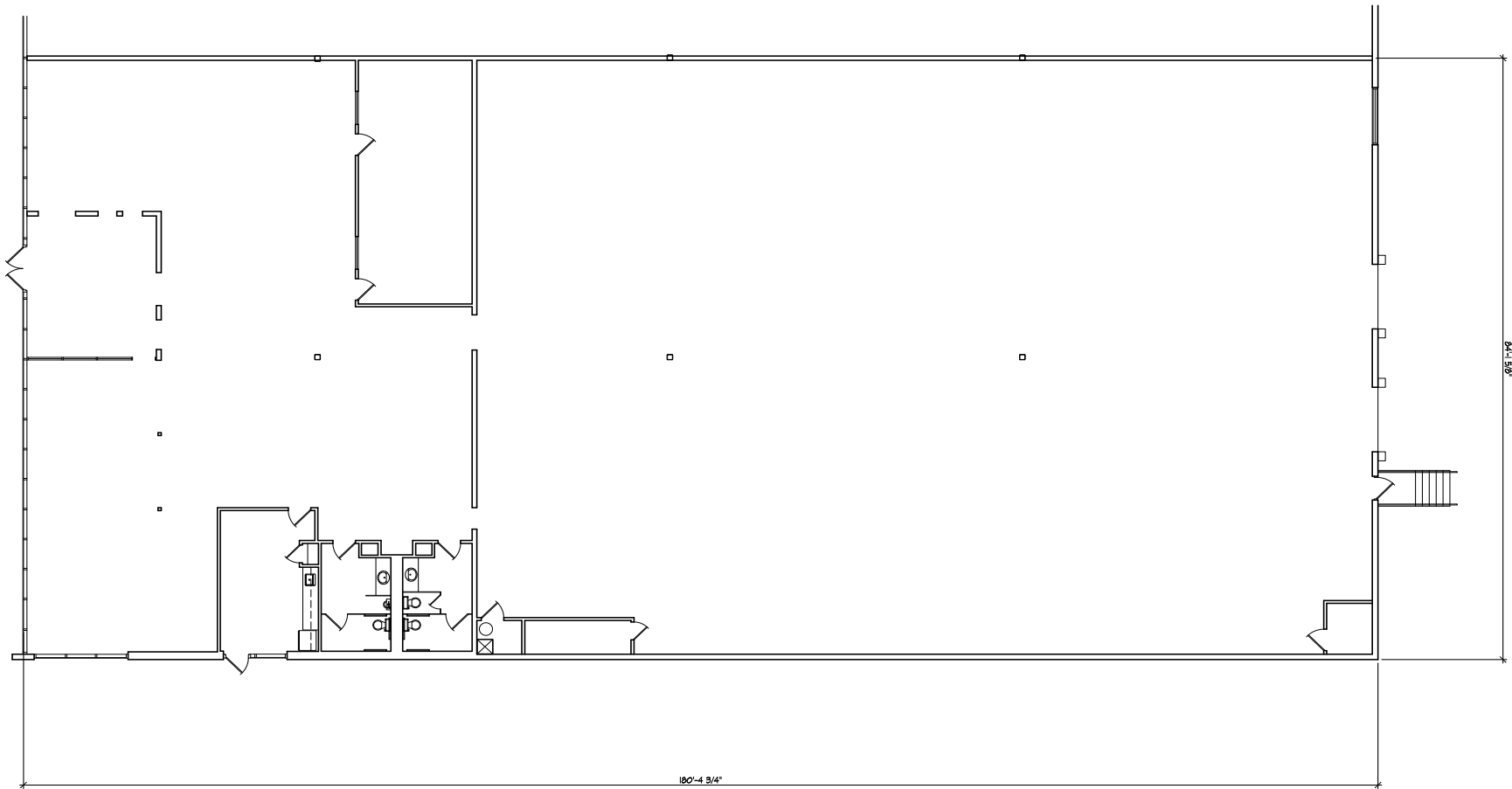
12435 Park Potomac Ave, Suite 250
Rockville MD, 20854
klnb.com



12006 PLUM ORCHARD DRIVE

Silver Spring, MD 20904
Montgomery County

FLOOR PLAN



15,000 SF

Kenneth Fellows
kfellows@klnb.com
301-222-0210

Robert Pugh
rpugh@klnb.com
301-222-0211

Keiry Martinez
kmartinez@klnb.com
703-334-5629

Matt Skalet
mskalet@klnb.com
202-420-7775

12435 Park Potomac Ave, Suite 250
Rockville MD, 20854
klnb.com



12006 PLUM ORCHARD DRIVE

Silver Spring, MD 20904

Montgomery County

[CLICK TO VIEW PROPERTY WEBSITE](#)

For More Information, Please Contact:

Kenneth Fellows
kfellows@klnb.com
301-222-0210

Robert Pugh
rpugh@klnb.com
301-222-0211

Keiry Martinez
kmartinez@klnb.com
703-334-5629

Matt Skalet
mskalet@klnb.com
202-420-7775



While we have no reason to doubt the accuracy of any of the information supplied, we cannot, and do not, guarantee its accuracy. All information should be independently verified prior to a purchase or lease of the property. We are not responsible for errors, omissions, misuse, or misinterpretation of information contained herein and make no warranty of any kind, express or implied, with respect to the property or any other matters.

12435 Park Potomac Ave, Suite 250
Rockville MD, 20854
klnb.com

