

Carlos Pizarro, R.A.  
 AR - 0013079

Revisions:

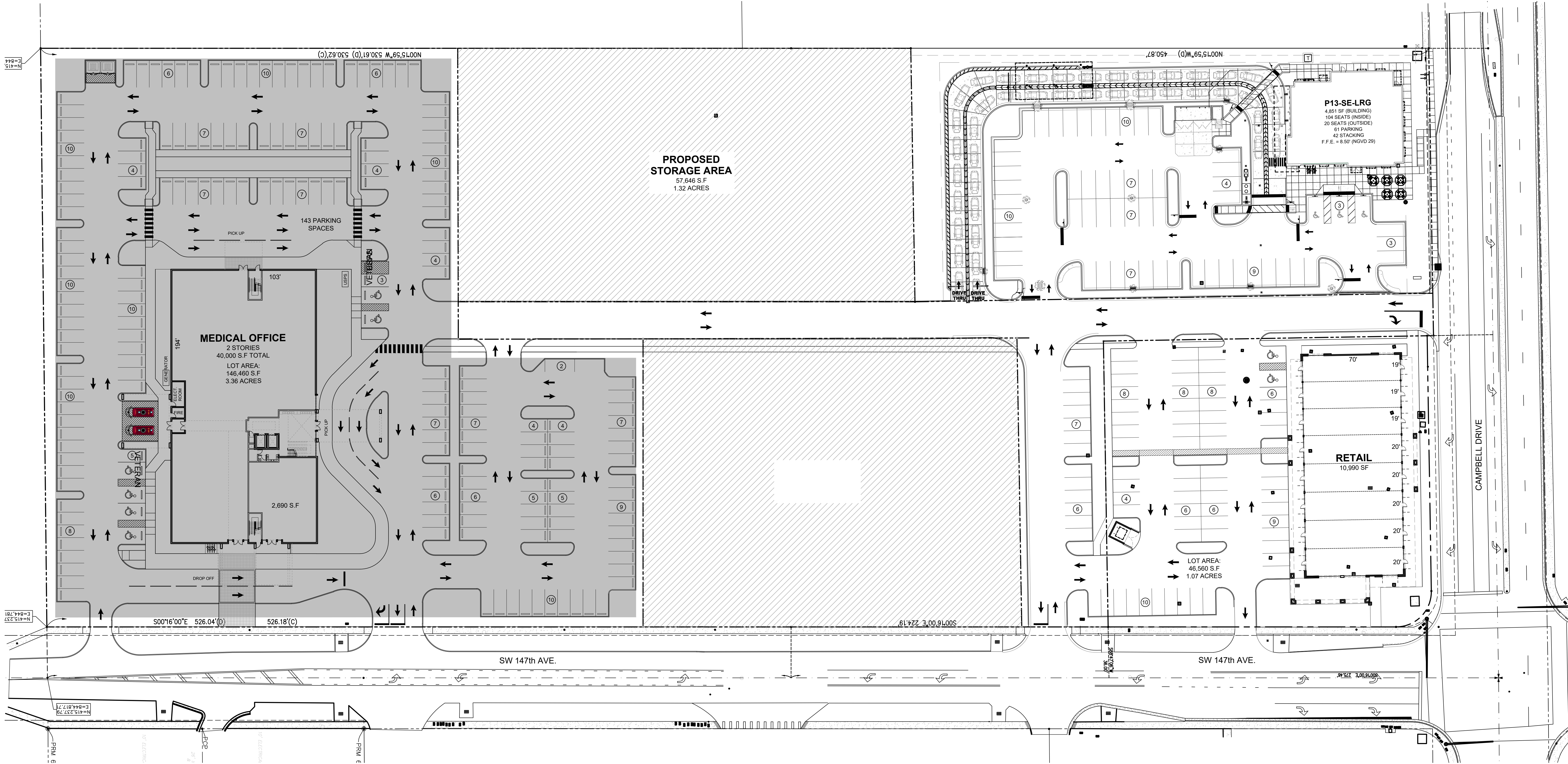
Date	Description

OWNER / DEVELOPER:  
**HSYFT CAMPBELL, LLC**  
 4531 PONCE DE LEON BLVD. SUITE 300  
 CORAL GABLES FL 33146

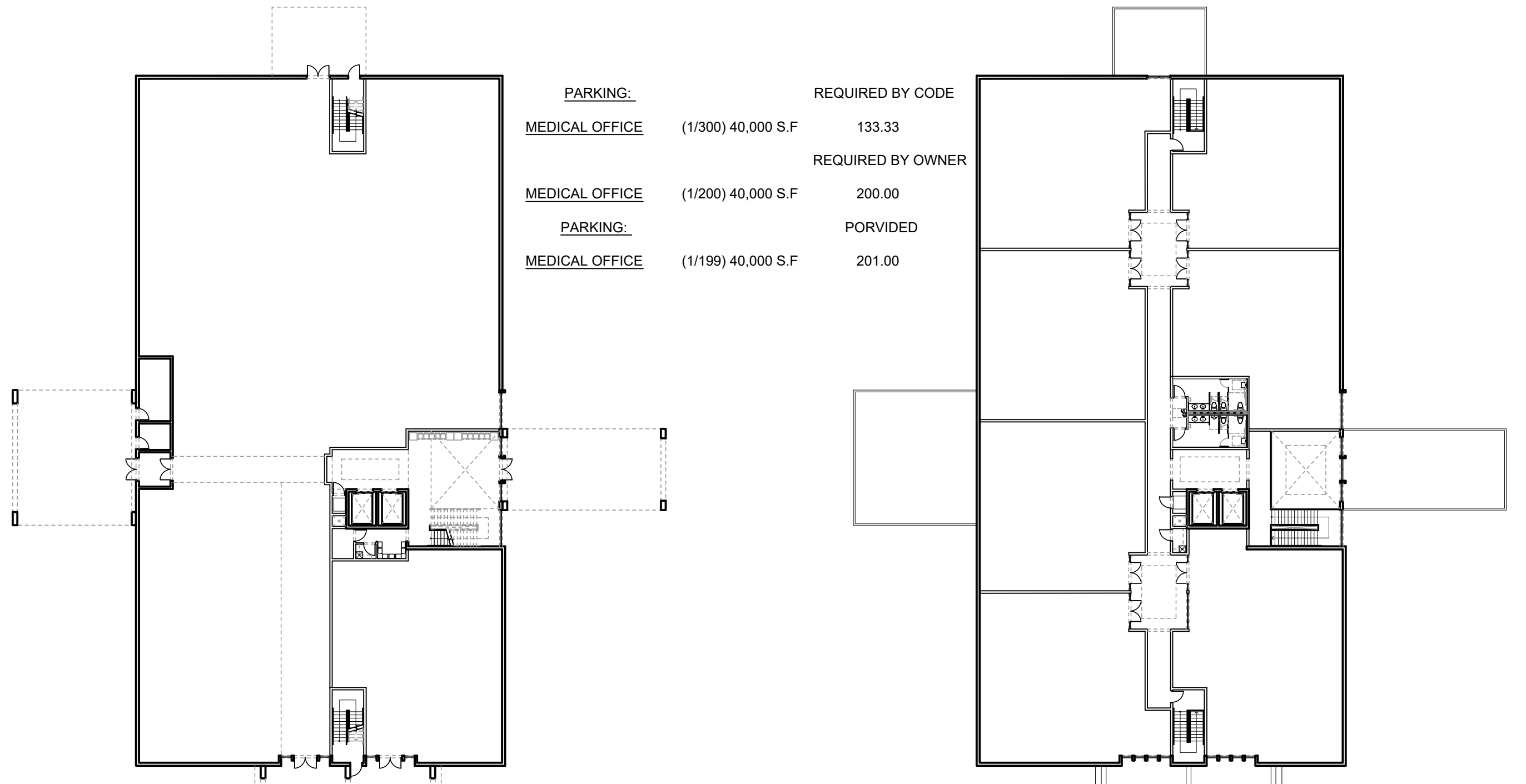
PROJECT:  
**RETAIL SITE@ CAMPBELL DRIVE & SW 147th AVE.**  
 31200 SW 147th AVENUE  
 HOMESTEAD FLORIDA

Job Number: 17045.03  
 File name:  
 Issued Date: 06/03/2021  
 Drawn by: J.C  
 Checked by: C.P

SHEET NAME  
**SCHEMATIC SITE PLAN**  
 SHEET NUMBER  
**SP-1.0**



**SCHEMATIC SITE PLAN ALT.19.1**  
 SCALE: 1" = 30'-0"



**SCHEMATIC GROUND FLOOR PLAN**  
 SCALE: 1" = 30'-0"

**SCHEMATIC SECOND FLOOR PLAN**  
 SCALE: 1" = 30'-0"

PARKING:	REQUIRED BY CODE	REQUIRED BY OWNER
MEDICAL OFFICE (1/300) 40,000 S.F	133.33	200.00
MEDICAL OFFICE (1/200) 40,000 S.F	200.00	201.00
MEDICAL OFFICE (1/199) 40,000 S.F	201.00	

PARKING:	REQUIRED	PORVIDED
OFFICE (1/300) 3,990 S.F	13.30	
RETAIL (1/300) 4,200 S.F	14.00	
RESTAURANT W/ OUTDOOR SEATING (112 SEATS -1/4 SEATS) 2,800 S.F	28.00	78.00
CHICK-FIL-A 4,989 S.F	61.00*	60.00
MEDICAL OFFICE (1/300) 40,000 S.F	133.33	201.00
<b>TOTAL REQUIRED</b>	<b>249.00</b>	<b>339.00</b>
<b>HANDICAP SPACES REQUIRED</b>	<b>7</b>	<b>11</b>

\* REQUIRED PARKING PER PROTOTYPE.

NOTE:  
 THESE DRAWINGS ARE CONCEPTUAL IN NATURE  
 AND NOT INTENDED FOR CONSTRUCTION  
 PURPOSES