



ONE TUDOR STREET
LONDON EC4

ONETUDORST.LONDON

WELCOME TO

ONE TUDOR STREET

One Tudor Street is an impressive landmark building benefiting from a large double height entrance in a thriving part of London.

Benefiting from everything the City and Midtown has to offer, this well positioned property offers great connectivity, amenities and global network opportunities.





RECEPTION CGI

IMPRESSIVE
DOUBLE-HEIGHT
RECEPTION

S I M P L E
W O R K
S P A C E



NEW FULLY
FITTED SOLUTION
ON 1ST FLOOR



NEW OPEN PLAN
CAT A SOLUTION
ON 2ND FLOOR



FOUR PIPE FAN COIL
AIR CONDITIONING



RAISED FLOORS
OF 150MM



2.75M CLEAR FLOOR
TO CEILING HEIGHT



FULL HEIGHT
GLAZING



3 X 13 PERSON
PASSENGER LIFTS



DOUBLE HEIGHT
MANNED RECEPTION



SHOWERS & LOCKERS
IN BASEMENT



BICYCLE STORAGE

FITTED OFFICES

The first floor is fitted out in a blend of open plan, private offices, collaborative spaces and meeting rooms, with furniture.

- PAGE 05 -



1ST FLOOR CGI

A MIX OF
OPEN PLAN
AND PRIVATE
OFFICE SPACE



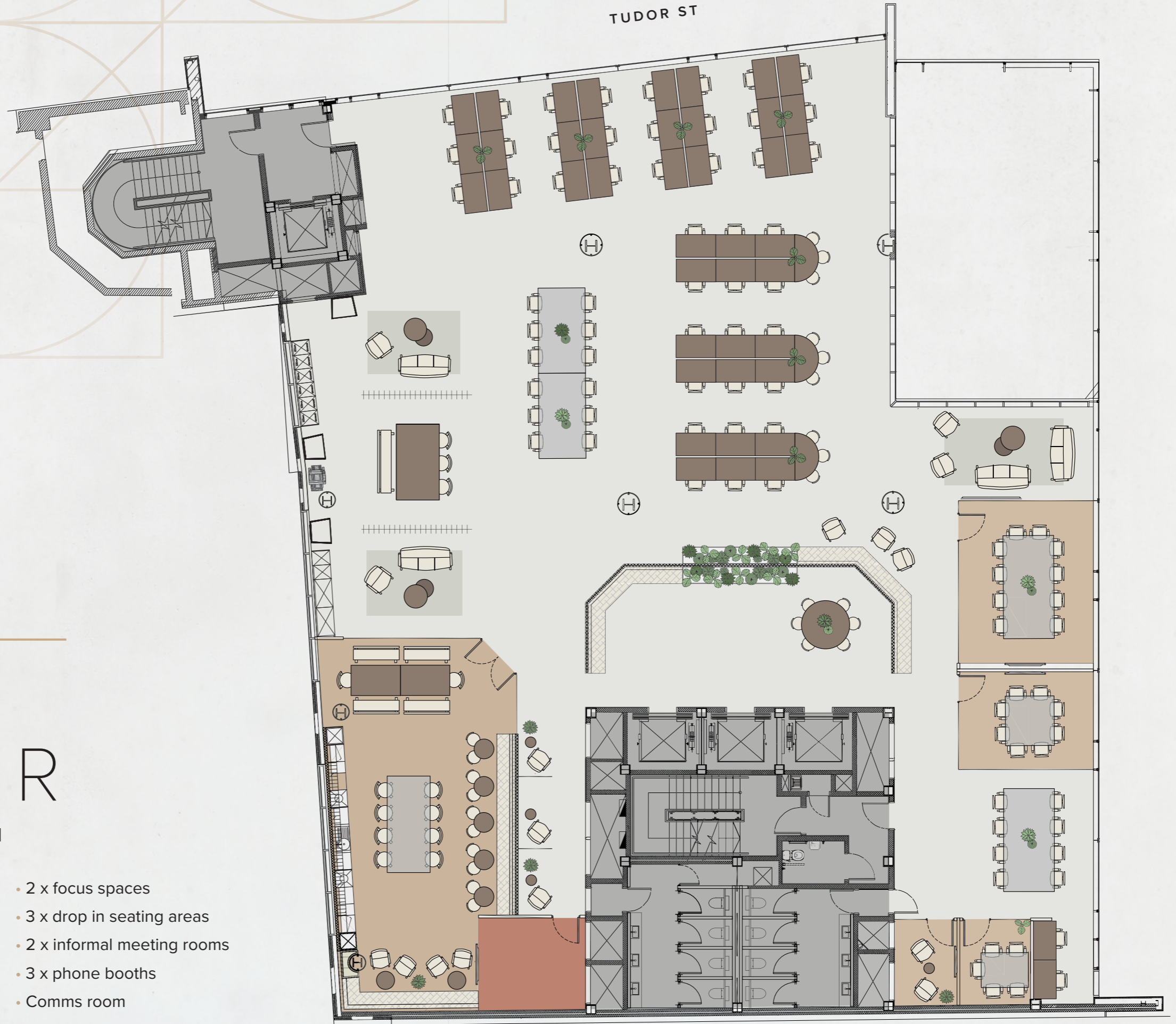
1ST FLOOR CGI

TUDOR ST

FIRST FLOOR

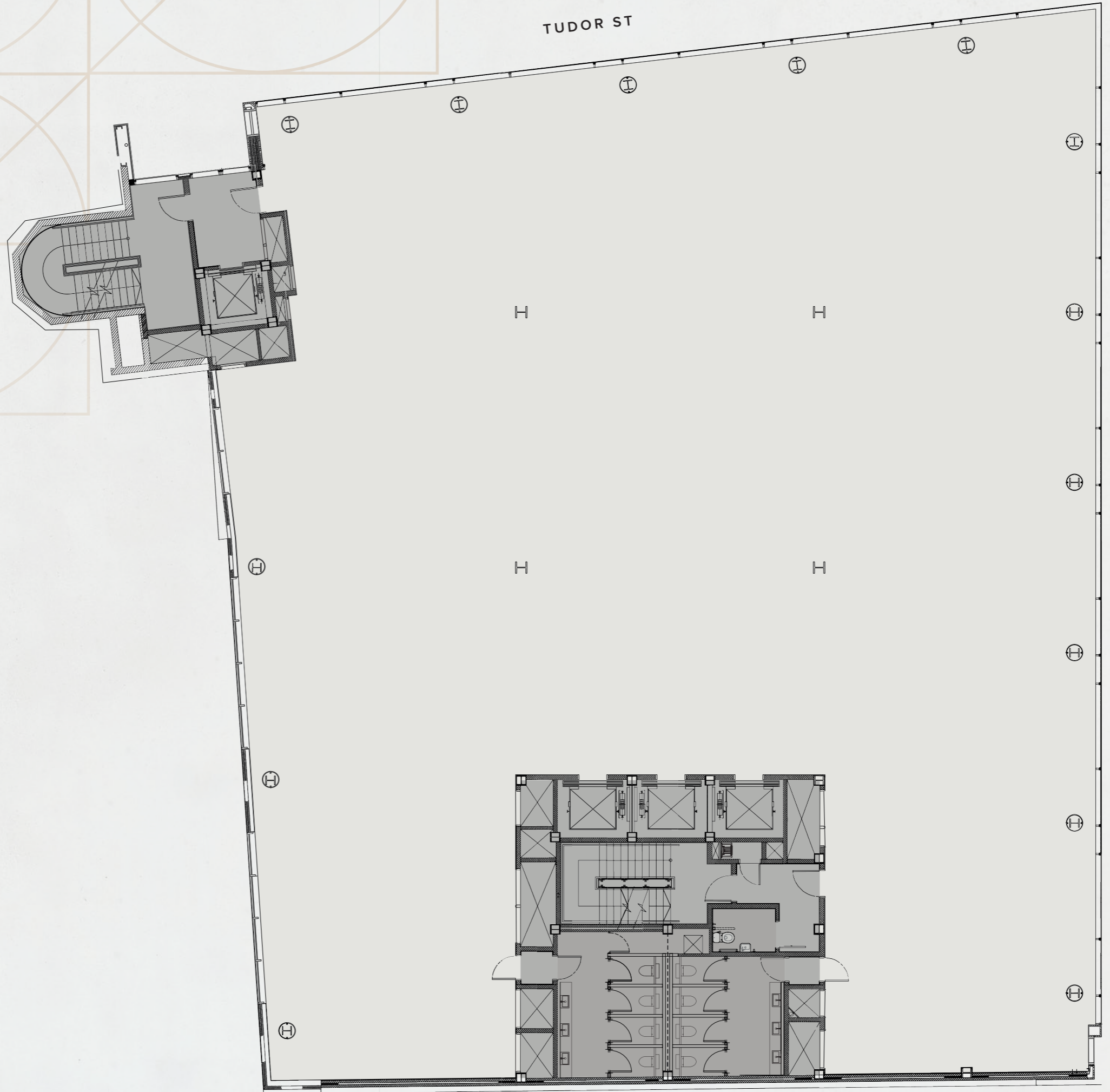
7,493 SQ FT / 696 SQ M

- 1 x 10 person board room
- 1 x 8 person board room
- 42 workstations
- 23 flexible workspaces
- 3 x working lounges
- 2 x focus spaces
- 3 x drop in seating areas
- 2 x informal meeting rooms
- 3 x phone booths
- Comms room



SECOND FLOOR

10,131 SQ FT / 941 SQ M





1ST FLOOR CGI

SPACE
TO RELAX

BEST QUALITY
INTERIOR
FINISHES
THROUGHOUT

WC'S CGI

EXCEPTIONAL
FINISHES

IDEALLY LOCATED

EC4

One Tudor Street benefits from a central location, near to the River Thames and within walking distance of St Pauls, Paternoster Square, New Street Square and various green spaces including Inner and Middle Temple.

Local transport links include Blackfriars and St Pauls underground stations, City Thameslink, National Rail and Elizabeth Line services.



JUST 100M
AWAY FROM
BLACKFRIARS
STATION

WELL CONNECTED

BARS & RESTAURANTS

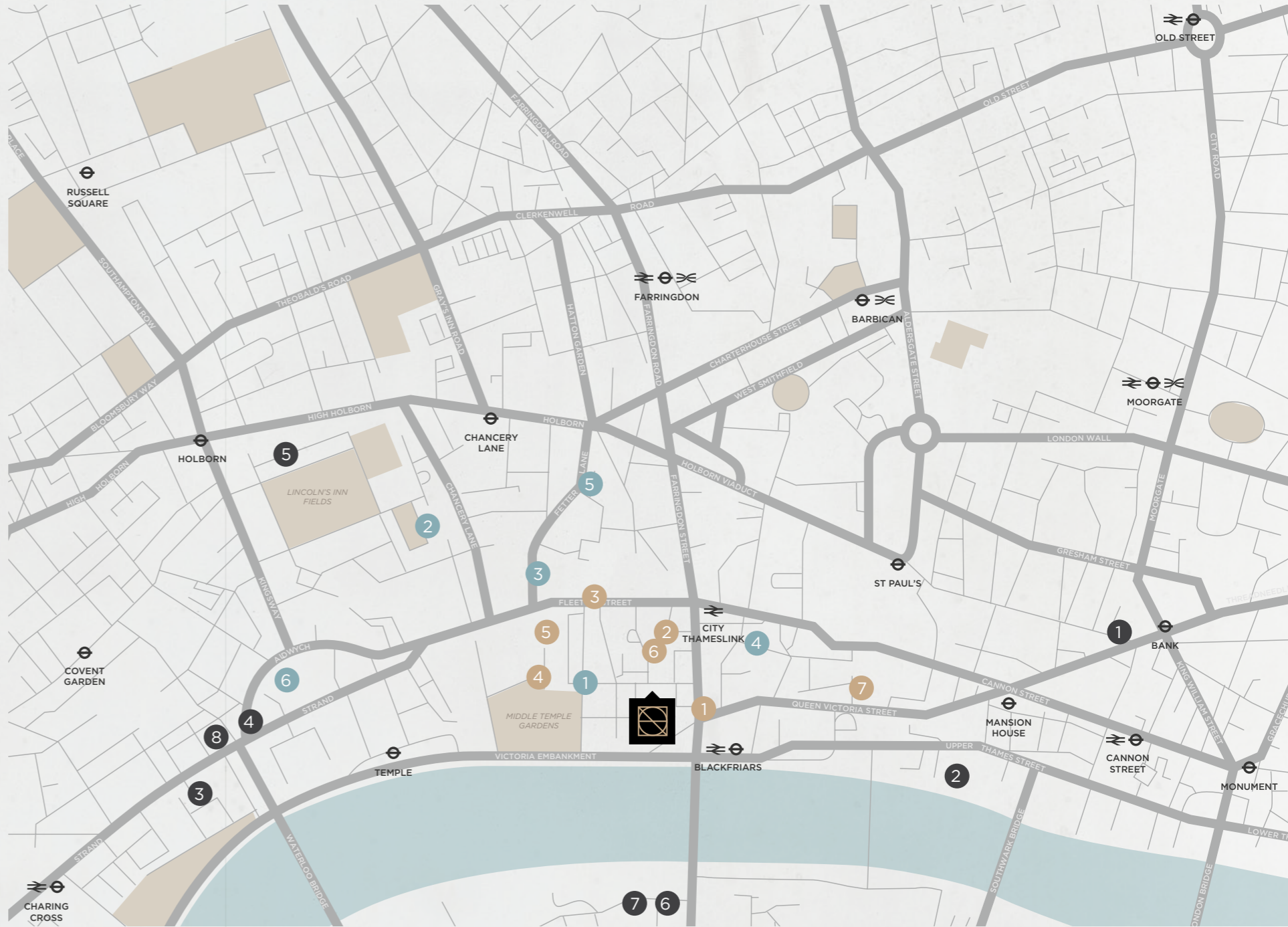
- 1 The Blackfriar
- 2 City of London Distillery & Bar
- 3 Clifford's Restaurant
- 4 Pegasus Bar & Restaurant
- 5 Chambers
- 6 Humble Grape
- 7 Sabine

WELLNESS

- 1 Evolve Fitness
- 2 Urban Fitness
- 3 Fitness First
- 4 Anytime Fitness
- 5 The Gym Group
- 6 King's Sport

HOTELS

- 1 The Ned
- 2 Westin London City
- 3 The Savoy
- 4 ME London
- 5 Rosewood London
- 6 Bankside Hotel
- 7 Sea Containers London
- 8 One Aldwych Hotel



JOURNEY TIMES FROM NEAREST STATION: BLACKFRIARS





FINISHED WITH ALL-ROUND

SUPERIOR
DESIGN



ONE TUDOR STREET
LONDON EC4

FURTHER INFORMATION AND
ENQUIRIES

TIM WILLIAMS

07717 576 894

tim.williams@realestate.bnpparibas

ROBERT ROONEY

07469 403 225

robert.rooney@realestate.bnpparibas

PHILIP MCKENNA

07774 659 597

philip.mckenna@realestate.bnpparibas



BNP PARIBAS

BNP Paribas Real Estate

5 Aldermanbury Square

London EC2V 7BP

020 7338 4431

realestate.bnpparibas.co.uk

JAMES PROCTOR

07779 789 957

james.proctor@allsop.co.uk

HARRY THEAKSON

07500 847 045

harry.theakson@allsop.co.uk

RICHARD TOWNSEND

07787 153 408

richard.townsend@allsop.co.uk

allsop

Allsop

33 Wigmore Street

London W1U 1BZ

020 7437 6977

allsop.co.uk

February 2022. BNP Paribas Real Estate Advisory & Property Management Ltd and Allsop LLP for themselves and for the vendor(s) or lessor(s) of this property whose agents they are, give notice that: 1. These particulars do not constitute, nor constitute any part of, an offer or contract. 2. None of the statements contained in these particulars as to the property are to be relied on as statements or representations of fact. 3. Any intending purchaser or lessee must satisfy himself by inspection or otherwise as to the correctness of each of the statements contained in these particulars. 4. The vendor(s) or lessor(s) do not make or give and neither BNP Paribas Real Estate Advisory & Property Management Ltd / Allsop LLP nor any person in their employment has any authority to make or give, any representation or warranty whatever in relation to this property. Finance Act 2013: Unless otherwise stated all prices and rents are quote exclusive of VAT. The Business Protection from Misleading Marketing Regulations 2008: These details are believed to be correct at the time of compilation but may be subject to subsequent amendment. Brochure design fetchagency.com