

2230 CROPSEY AVENUE

OFF OF BAY PARKWAY | BATH BEACH/GRAVESEND

LEASED


COMMUNITY FACILITY SPACE FOR LEASE



2230 CROPSEY AVENUE

OFF OF BAY PARKWAY | BATH BEACH/GRAVESEND

PROPERTY DETAILS

| | |
|-----------------|---|
| SIZE: | 501 SF Ground Floor 18,000 SF Second Floor |
| FRONTAGE: | 80' |
| CEILING HEIGHT: | 12' |
| POSSESSION: | Immediate |
| ASKING RENT: | Upon Request |
| TRANSPORTATION: |  , B6, B82 |

HIGHLIGHTS

- Community facility
- Two private elevators
- 248 apartments above
- High vehicle traffic area
- Dense residential neighborhood
- Neighbors include:
Key Food Supermarkets, Food Bazaar, Cropsey Bagels, Parkview Diner, La Casa Bella, Bamboo Seafood Restaurant, Best Buy Deli, Ras Plant Based, L'Algeroise French pâtisserie, Skyway Grocery and Halal Meat, Starbucks, T-Mobile, Foodtown



2230 CROPSEY AVENUE

OFF OF BAY PARKWAY | BATH BEACH/GRAVESEND

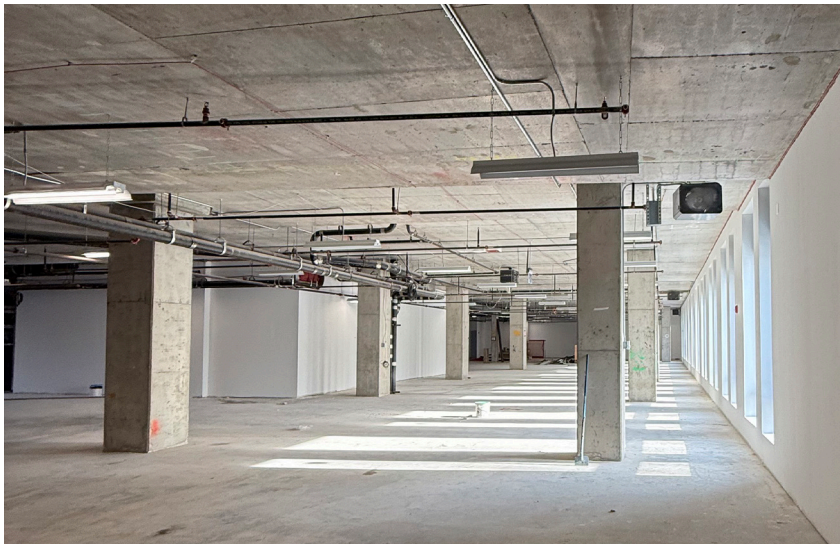
AREA MAP:



2230 CROPSEY AVENUE

OFF OF BAY PARKWAY | BATH BEACH/GRAVESEND

INTERIORS:



All information supplied in this marketing presentation and/or flyer is from sources deemed reliable and is furnished subject to errors, omissions, modifications, removal of listings from sale/lease and to any listing condition. Any square footage, dimensions, floor plans and/or technical data set forth are approximations and are subject to further elaboration/confirmation.

2230 CROPSEY AVENUE

OFF OF BAY PARKWAY | BATH BEACH/GRAVESEND

**FOR MORE INFORMATION,
PLEASE CONTACT:**

ROYEE ZARUM

347.755.8137 | RZarum@ksrny.com

JORDAN SOLEIMANI

516.732.3697 | JSoleimani@ksrny.com

ELI YADID

917.770.9173 | EYadid@ksrny.com



1385 Broadway, 22nd Floor | New York, NY 10018
212.417.9217

ksrny.com